

**000-371**

**000-371**

**Web Services Development for IBM WebSphere  
Application Server V7.0**

**Version 3.1**

000-371

**QUESTION NO: 1**

Refer to the message in the exhibit.

Replace the ??? in the message with the appropriate namespace.

- A. <http://www.w3.org/2003/05/soap-envelope>
- B. <http://schemas.xmlsoap.org/soap/envelope/>
- C. <http://schemas.xmlsoap.org/soap12/envelope/>
- D. <http://schemas.xmlsoap.org/soap11/envelope/>

**Answer: A**

**QUESTION NO: 2**

A company has a high business value JAX-WS provider Web Service and cannot afford to lose any messages. What kind of quality of service should be used in conjunction with WS-Reliable Messaging?

- A. Managed persistent
- B. Managed non-persistent
- C. Unmanaged non-persistent
- D. Managed persistent and Transaction (enableTransactionalOneWay)
- E. Managed non-persistent and Transaction (enableTransactionalOneWay)
- F. Unmanaged non-persistent and Transaction (enableTransactionalOneWay)

**Answer: D**

**QUESTION NO: 3**

The TCP/IP Monitor can be used to check the following:

- A. SOAP/JMS
- B. HTTP Header
- C. WSDL document
- D. SOAP messages
- E. WS-I Compliance

**Answer: B, D, E**

**QUESTION NO: 4**

A developer used wsimport to generate the skeleton code for a Web service implementation. What is the purpose of the generated Object Factory class?

- A. The Object Factory class is the generated Service Endpoint Interface class

000-371

- B. The Object Factory class is the generated service provider class that is used by the JAX-WS client.
- C. The Object Factory class takes the target Namespace value and creates the directory structure.
- D. The Object Factory class allows you to programmatically construct new instances of the Java representation for XML content.

**Answer:** D

**QUESTION NO: 5**

Which of the following is used to invoke a Web service from an unmanaged client?

- A. JAX-WS dispatch API
- B. Deployment descriptor
- C. @Resource annotation
- D. @WebServiceRef annotation
- E. Service and Interface classes

**Answer:** A, E

**QUESTION NO: 6**

A company is migrating their current JAX-WS Web service running on IBM Web Sphere Application Server V6.1 with the Feature Pack for Web Services to V7.0. The company wants to continue to support V6.1 service consumers. If the Web service has WS-Atomic Transaction enabled, what settings should be configured to support the widest range of clients?

- A. Set the WS-Atomic Transaction to "Never" in WS-Transaction policy of the policy set
- B. Set the WS-Atomic Transaction to "Supports" in WS-Transaction policy of the policy set
- C. Set the WS-Atomic Transaction to "Mandatory" in WS-Transaction policy of the policy set
- D. Set the "Default WS-Tx specification level" to "1.0" in application policy set bindings
- E. Set the "Default WS-Tx specification level" to "1.1" in application policy set bindings

**Answer:** B, D

**QUESTION NO: 7**

Why would a developer prefer to use SOAP Web services over REST Web services?

- A. To provide message level security
- B. To allow integration with Web 2.0 applications
- C. To be able to use XML to format response messages

000-371

D. To be able to use the HTTP or HTTPS transport protocols

**Answer: A**

**QUESTION NO: 8**

Which of the following business scenarios is the LEAST appropriate for Web services?

- A. Expanding the reach of your company information.
- B. Providing transactional services such as credit card payment processing.
- C. Making existing services available to a business process to orchestrate services.
- D. Enabling interoperability between heterogeneous services to create time-critical solutions.

**Answer: D**

**QUESTION NO: 9**

What is the LEAST appropriate scenario for Web services?

- A. To integrate legacy systems
- B. To propagate security context
- C. To expose fine grained operations
- D. To use with process choreography
- E. For B2B (business to business) applications

**Answer: C**

**QUESTION NO: 10**

What is the biggest advantage of using Web services to create SOA solutions?

- A. They are implemented using Java and XML
- B. They support a client-server programming model
- C. They are used to create tightly coupled applications
- D. They are implemented using standardized technologies

**Answer: D**

**QUESTION NO: 11**

The following methods are to be published as Web services to be invoked via SOAP messages and validated with a schema: public void my Method(int x, float y); public void my Method(int x); public void someOtherMethod(int x, float y); Which WSDL style should be used?

000-371

- A. RPC/literal
- B. RPC/encoded
- C. Document/encoded
- D. Document/literal
- E. Document/literal wrapped

**Answer: A**

**QUESTION NO: 12**

Which WSDL style is suited to sending binary tree nodes as part of a SOAP message?

- A. RPC/literal
- B. RPC/encoded
- C. Document/encoded
- D. Document/literal
- E. Document/literal wrapped

**Answer: B**

**QUESTION NO: 13**

A customer requires a Web service which ensures message delivery. Which transport should be proposed?

- A. SOAP/TCP
- B. SOAP/JMS
- C. SOAP/HTTP
- D. SOAP/SMTP
- E. SOAP/HTTPS

**Answer: B**

**QUESTION NO: 14**

When creating a Web service which requires reliable delivery of SOAP messages, which transport should be used?

- A. SOAP/TCP
- B. SOAP/JMS
- C. SOAP/HTTP
- D. SOAP/SMTP
- E. SOAP/HTTPS

**Answer: B**

000-371

**QUESTION NO: 15**

The WS-I Simple SOAP Binding Profile V1.0 mandates that a message must serialize the envelope according to which specification?

- A. XML 1.0
- B. WSDL 1.1
- C. SOAP 1.1
- D. HTTP 1.0

**Answer: A**

**QUESTION NO: 16**

Which specification provides recommendations on the use of encodings to maximize interoperability?

- A. SAAJ V1.2
- B. JAX-RPC V1.0
- C. WS-Coordination
- D. WS-I Basic Profile (BP) V1.1

**Answer: D**

**QUESTION NO: 17**

Which of the following is MOST likely to improve the performance of SOAP-based Web services?

- A. Use message level security
- B. Use fine-grained Web services
- C. Use document/literal instead of RPC/encoded
- D. Avoid stale data in the UDDI registry by turning off caching

**Answer: C**

**QUESTION NO: 18**

An RPC/encoded Web service experiences poor performance at high message volumes. What can a developer do to improve this performance?

- A. Turn off marshalling
- B. Use binary encoding
- C. Use RPC/literal encoding
- D. Use document/literal encoding
- E. Redesign to use more granular messaging

000-371

**Answer:** C, D

**QUESTION NO:** 19

How can a developer ensure that a fault will occur if the service does not recognize a SOAP header entry containing a transaction number?

- A. Set the fault Code value to soap: Transaction
- B. Include a Fault element in the SOAP message
- C. Include a must Understand attribute in the header entry
- D. Include a detail element containing application-specific elements according to the XML Schema

**Answer:** C

**QUESTION NO:** 20

What must be included in a SOAP fault message when an error occurs due to a value in the message Body element?

- A. A detail element
- B. A Body fault code
- C. An application-specific fault code
- D. A fault string element with a value of "Body"

**Answer:** A

**QUESTION NO:** 21

Which of the following are the benefits of using the UDDI Registry?

- A. Enable service governance
- B. Maintain the lifecycle of services
- C. Encourage service reuse in an organization
- D. Document management and access control
- E. Allow service consumers to discover services

**Answer:** C, E

**QUESTION NO:** 22

A developer has created a new Web service but now he wants to publicize the details of it so it can be discovered by other consumers. What technology(ies) or product(s) can the developer use?

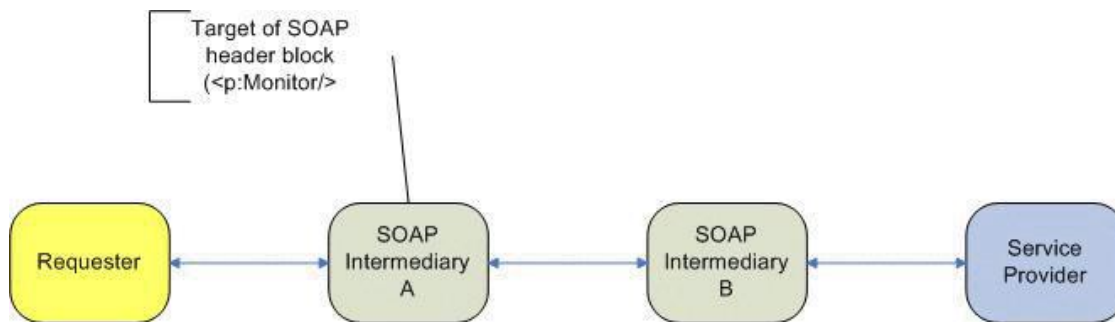
000-371

- A. UDDI
- B. a custom registry
- C. WS-Management
- D. WS-Metadata Exchange
- E. Web Services Distributed Management
- F. Web Sphere Service Registry and Repository

**Answer:** A, B, F

### QUESTION NO: 23

Refer to the exhibits.



Given the diagram in Exhibit 1, and the message in Exhibit 2, how will the relay attribute be interpreted by the SOAP intermediary targeted mentioned in the first header block?

```

<?xml version="1.0" encoding="UTF-8"?>
<env:Envelope xmlns:env="http://www.w3.org/2003/05/soap-envelope" >
  <env:Header>
    <p:Monitor xmlns:p="http://example.com"
      env:role="http://www.w3.org/2003/05/soap-
      envelope/role/next"
      env:relay="true"
      env:mustUnderstand="true">
      <!--some info here -->
    </p:Monitor>
    <p:Audit xmlns:p="http://example.com"
      env:role="http://example.org/Log"
      env:mustUnderstand="true">
      <!--some info here -->
    </p:Audit>
    <!--Additional header blocks here -->
  </env:Header>
  <env:Body>
    <!--some Body info here -->
  </env:Body>
</env:Envelope>
  
```



000-371

- A. The header block will be forwarded to the next SOAP node after being processed.
- B. The header block will be forwarded to the next SOAP node without being processed.
- C. The header block will be removed after being processed and the message will be forwarded to the next SOAP node.
- D. The header block will be removed without being processed and the message will be forwarded to the next SOAP node.

**Answer: C****QUESTION NO: 24**

Refer to WSDL extract in the exhibit. What does the soap: binding element specify?

```

<wsdl:binding name="NewWSDLFileSOAP" type="tns:NewWSDLFile">
  <soap:binding style="document"
transport="http://schemas.xmlsoap.org/soap/http"/>
  <wsdl:operation name="NewOperation">
    <soap:operation
soapAction="http://www.example.org/NewWSDLFile/NewOperation"/>
    <wsdl:input>
      <soap:body use="literal"/>
    </wsdl:input>
    <wsdl:output>
      <soap:body use="literal"/>
    </wsdl:output>
  </wsdl:operation>
</wsdl:binding>

```

- A. The message will be in an XML document
- B. SOAP will be used as a transport protocol
- C. The binding is defined by the NewWSDLFile type
- D. The binding is bound to the SOAP protocol format

**Answer: D****QUESTION NO: 25**

Refer to the WSDL extract in the Exhibit. What type of operation is this?

```

<wsdl:portType .... >
  <wsdl:operation name="update">
    <wsdl:output name="update" message="tns:update"/>
  </wsdl:operation>
</wsdl:portType >

```

- A. One-way
- B. Notification