

# BEA

## Exam 0B0-103

### BEA8.1 Certified Developer: Integration Solutions

Version: 5.0

[ Total Questions: 67 ]

**Topic 0, A**

A

**Question No : 1 - (Topic 0)**

Consider this code snippet:

```
try {
    MBeanHome home = getMBeanHome(url, username, password);
    ApplicationRuntimeMBean app = getApplicationRuntimeMBean(home, appName);
    WebAppComponentRuntimeMBean webapp = getWebAppComponentRuntimeMBean(app, ctxRoot);
    ServletRuntimeMBean servlet = getServletRuntimeMBean(webapp, servletName);
    System.out.println("Invocation count is " +
        servlet.getInvocationTotalCount());
    } catch (Exception e) {
    System.out.println("Exception caught: " + e);
    }
}
```

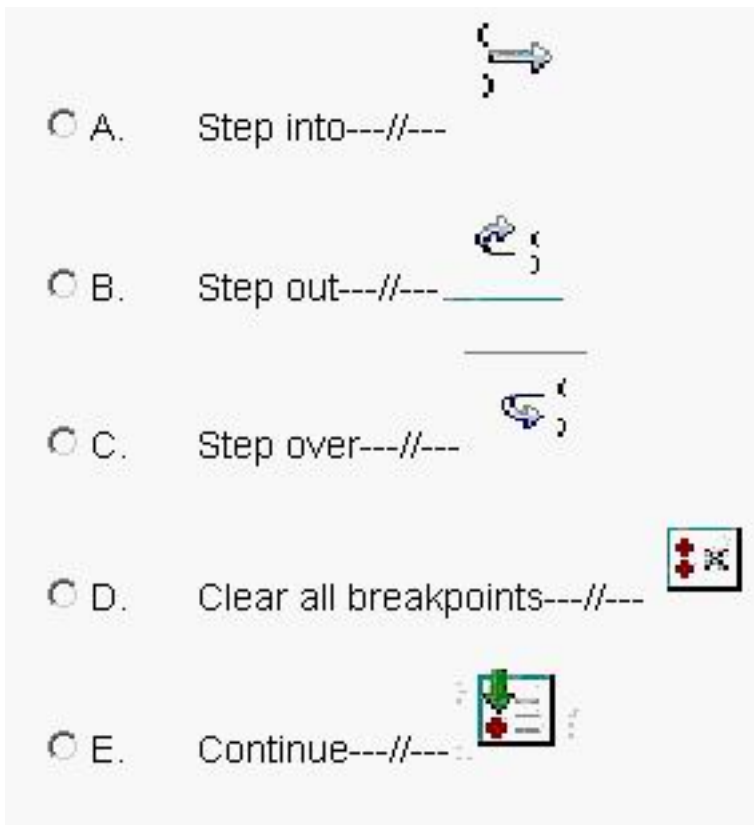
What information does the code provide?

- A. Runtime information about all Servlet Sessions
- B. Runtime invocation totals for a Servlet
- C. Runtime information for all Servlets on a specific server
- D. Configuration information defined in the deployment descriptors of all Servlets
- E. Runtime information for all Servlets that have been invoked at least once

**Answer: B**

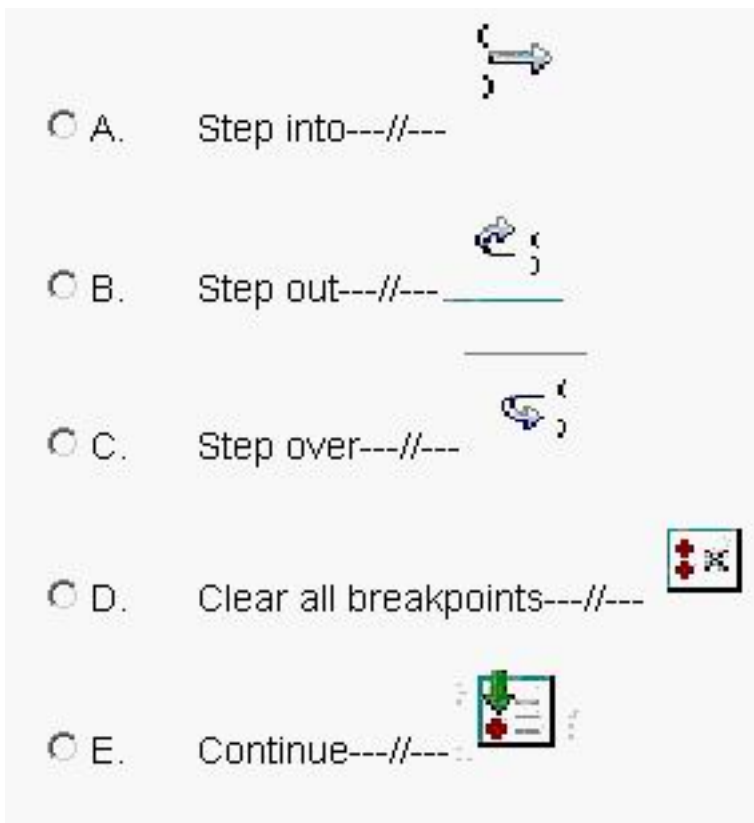
**Question No : 2 CORRECT TEXT - (Topic 0)**

You have finished creating your process definition. The definition is somewhat complex, and it involves multiple entry points and branches; you want to step through the definition to test for correct execution and flow. You have reached a breakpoint that you set in your process definition. The breakpoint is a loop; to step through each iteration and display the current customer credit-limit amount, which Debug step should you use?



A

Answer:



**Question No : 3 - (Topic 0)**

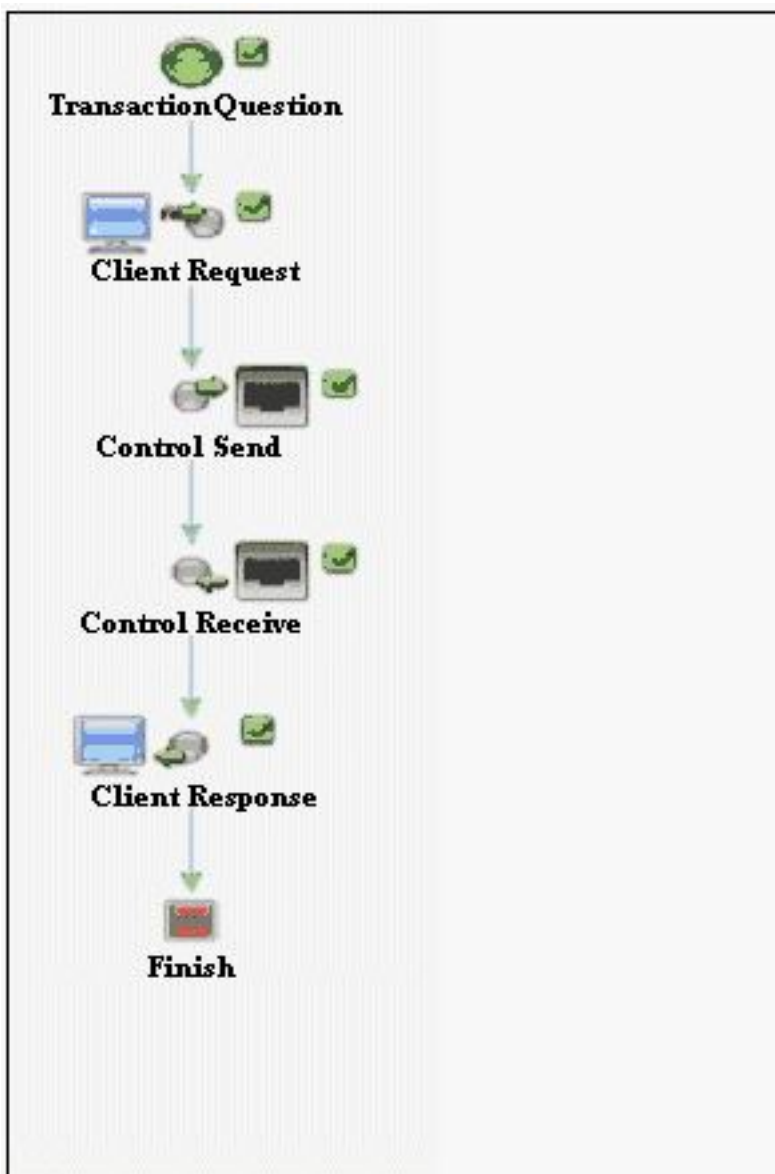
A mainframe batch process extracts sales information from a legacy point-of-sale system, nightly. The batch process deposits this information in a binary file in the directory `/usr/local/POS/salesdata/ftp_report_sales_daily` . What is the best way to access the data in your process definition?

- A. Use an FTP control that is called synchronously from the process definition.
- B. Create an Application View to access a J2CA adaptor that integrates with the legacy mainframe application, and call an Application View control from your process.
- C. Use a File control that is configured to read `ftp_report_sales_daily` from the directory `/usr/local/POS/salesdata` .
- D. Create an Application View to integrate with the FTP server and call an Application View control from your process.
- E. Use an FTP control that is called asynchronously from the process definition.

**Answer: C**

**Question No : 4 - (Topic 0)**

Click the Exhibit button at the bottom of the screen. Consider this JPD diagram: All transaction demarcation is performed by WLI (not by the control code). Successful execution of this process results in how many transactions?



- A. 1
- B. 2
- C. 3
- D. 4
- E. 0

**Answer: B**

**Question No : 5 - (Topic 0)**

Which is NOT a valid setting for the conversation phase of a Web service operation?

- A. none
- B. start
- C. finish

- D. suspend
- E. continue

**Answer: D**

**Question No : 6 - (Topic 0)**

You have finished creating your process definition. The definition is somewhat complex, and it involves multiple entry points and branches; you want to step through the definition to test for correct execution and flow. You created a complex XQuery that maps a purchase order XML document onto arguments of a Web service method. In WebLogic Workshop, what is the easiest way to test the validity of this XQuery expression?

- A. In Format Builder, set a breakpoint on the first line of the MFL file.
- B. Display the transformation control in Design View, and select the Test View tab of the XQuery method.
- C. Set a breakpoint on the XQuery method when displaying the transformation control in Design View.
- D. You cannot test an XQuery expression in Workshop.
- E. Set a breakpoint on the called method of the Web service and use the service's test page to verify that data was converted correctly by the XQuery expression.

**Answer: B**

**Question No : 7 - (Topic 0)**

Which statement about the use of Application Views is correct?

- A. Publishing an Application View results in the creation of an EAR file.
- B. Publishing an Application View results in the creation of an EJB JAR file.
- C. The control must be created in the Application Integration Design Console.
- D. The Application View must be created in Workshop before the control can be created.
- E. The Application View must be created in the Integration Administration console before the control can be created.

**Answer: B**

**Question No : 8 DRAG DROP - (Topic 0)**

Click the Task button.

Using the following UML activity diagram, place the first five process nodes you would use, from first to last, to implement this business process.

**Using the following UML activity diagram, select the first five process nodes you would use, from first to last, to implement this business process.**

**UML Activity Diagram**

```

graph TD
    Start(( )) --> N1[1 Validate Customer Information]
    N1 --> D2{2}
    D2 -- Valid --> N3[3 Process Order]
    D2 -- Not Valid --> Exit1[ ]
    N3 --> Fork[4]
    Fork --> N5[5 Query Product Base]
    N5 --> D6{ }
    D6 -- Not in Stock --> Exit2[ ]
    D6 -- In Stock --> Sink[ ]
    N5 --> D6
    
```

**Order**

place here	For Each
place here	Parallel
place here	Decision
place here	Perform
place here	Transform

**Element**

First	Second	Third	Fourth	Fifth	Done
-------	--------	-------	--------	-------	------

Answer:

Using the following UML activity diagram, select the first five process nodes you would use, from first to last, to implement this business process.

**UML Activity Diagram**

**Order**

- Second: For Each
- Fifth: Parallel
- First: Decision
- Third: Perform
- Fourth: Transform

**Element**

First Second Third Fourth Fifth Done

**Question No : 9 - (Topic 0)**

Conglomo Communications, the nation's second leading cable TV provider, plans to provide application integration with an existing program directory. Conglomo will automate the service and sell it to subscribers. Conglomo has a business requirement to notify all content subscribers when listings are added, removed or changed in the programming database. What is one advantage of using an Application View provided by the WebLogic RDBMS adaptor, rather than a Database control, to satisfy this requirement?

- A. There is no advantage; it would be more complex to create and call the Application View than to use direct database access.
- B. The Application View can define INSERT, UPDATE and DELETE events that can be automatically handled by the workflow and generate the notification.
- C. The Application View can work directly with the XML Schema that is used by the node-handling notification.
- D. You must create an Database Control Application View, because this is the only way the workflow can use a database.
- E. An RDBMS Application View is more reusable, because it can also be called by other JPDs and Web services in the application.

**Answer: B**



**Question No : 10 HOTSPOT - (Topic 0)**

Click the Task button.

Using the following Use Case diagram, click on the node that would best implement the Notify Requestor of Failure node.

**Using the following Use Case diagram, click on the node that would best implement the Notify Requestor of Failure node.**

Case Diagram	Node
<pre> graph LR     subgraph Remove_Request [Remove Request]         G[Generate Invoice]         P[Process document retrieval transaction]         H[Handle messaging]         C[Check message]         S[Send message]         N[Notify requestor of failure]         C -.-&gt; &lt;&lt;Extend&gt;&gt;  H         S -.-&gt; &lt;&lt;Extend&gt;&gt;  H     end     CS[Customer Service Representative] --- G     CS --- P     CS --- H     CS --- N         </pre>	<div data-bbox="906 689 1193 797">  Decision         </div> <div data-bbox="906 837 1193 945">  notifyEmailControl         </div> <div data-bbox="906 981 1193 1088">  Perform         </div> <div data-bbox="906 1124 1193 1232">  Transform         </div> <div data-bbox="906 1267 1193 1375">  agentAssignment         </div> <div data-bbox="963 1406 1136 1460"> <input type="button" value="Done"/> </div>

**Answer:**