

Checkpoint

Exam 156-815.71

Check Point Certified Managed Security Expert R71

Version: 7.0

[Total Questions: 182]

Topic break down

Topic	No. of Questions
Topic 1: Volume A	90
Topic 2: Volume B	92

Topic 1, Volume A**Question No : 1 - (Topic 1)**

When debugging the fwm process at the MDS level, what file is created?

- A. fwm.log
- B. mds.error
- C. mds.log
- D. fwm.elg

Answer: C

Question No : 2 - (Topic 1)

You attempt to start the p1shell and get the following output:

```
Provider-1 R71.18

login: admin
Password:
Last login: Fri Jan 28 13:18:06 on tty1

? for list of commands
sysconfig for system and products configuration

[MDS1]# expert
Enter expert password:

You are in expert mode now.

[Expert@MDS1]# p1shell
The MDS has to be started in order to activate p1shell.
Would you like to start the MDS? (y/n) [n] ? y
Please enter the password for starting the MDS.
Enter password: _
```

What is this password called and where do you set it?

- A. Start-MDS Password, mdsconfig
- B. Start-MDS Password, sysconfig
- C. Mdsstart Password, sysconfig
- D. Mdsstart Password, cpconfig

Answer: A

Question No : 3 - (Topic 1)

What process/daemon does NOT run on a CLM?

- A. FWD
- B. FWM
- C. CPD
- D. CPCA

Answer: D

Question No : 4 - (Topic 1)

What modes are available in High Availability View of the MDG?

- A. VPN Community
- B. Network Objects
- C. Customer Contents

Answer: C

Question No : 5 - (Topic 1)

Which of the following is the Administrators Toolbar?

Exhibit A



Exhibit B



Exhibit C



Exhibit D

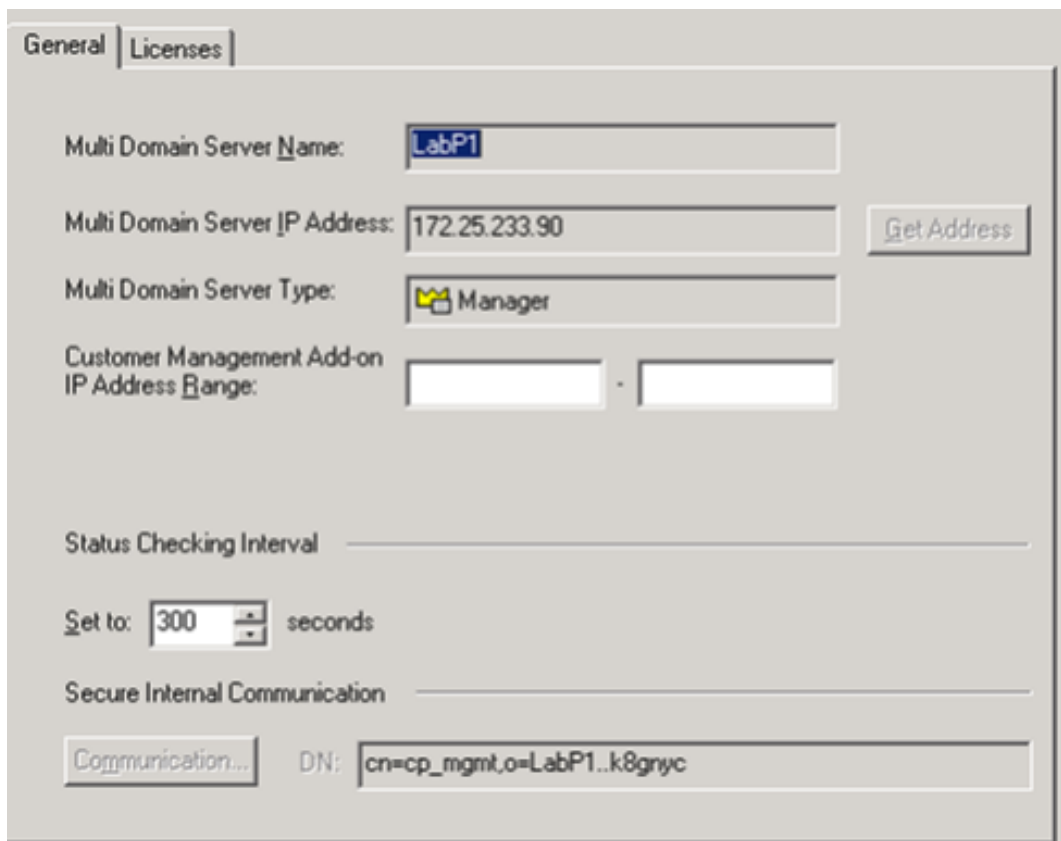


- A. Exhibit A
- B. Exhibit B
- C. Exhibit C
- D. Exhibit D

Answer: C

Question No : 6 - (Topic 1)

How would you navigate to the screen shown?



- A. Customer Contents > Right-click Provider-1 > Manager 1 > Settings
- B. File > Edit > Customer Management Settings
- C. Manage Menu > Provider-1/Site > Manager 1 > Properties
- D. MDS Contents > Right-click MDS > Configure Multi Domain Server

Answer: D

Question No : 7 - (Topic 1)

What method do you use to migrate from Solaris-based to SecurePlatform-based Multi-Domain Management with Provider-1?

- A. manual copy
- B. cma_migrate
- C. backup
- D. mds_backup

Answer: B

Question No : 8 - (Topic 1)

To increase the security of your NOC, you decide to install a NOC firewall and hire a firewall expert to manage it. The firewall expert wants to hide all of the invalid IP addresses of the CMAs, by installing a Hide NAT Policy on the firewall. Will this plan work?

- A. No, because VPN-1 NGX does not allow Administrators to configure Hide NAT on objects with assigned virtual IP addresses.
- B. No, because Hide NAT does not allow remote Gateways to connect directly to the CMAs.
- C. Yes, but only if Hide NAT is configured with the Hide address of the leading MDS interface.
- D. Yes, because the CMAs use virtual IP addresses, and they require a single valid IP address to manage remote Security Gateways.

Answer: B

Question No : 9 - (Topic 1)

What level of access do you need to run the Provider-1 Shell?

- A. Provider-1 Superuser or Global Manager
- B. Provider-1 Superuser or Customer Superuser
- C. Customer Manager or Customer Superuser
- D. Global Manager or Customer Manager

Answer: B

Question No : 10 - (Topic 1)

If a Multi-Domain Management with Provider-1 administrator would like to create a CMA's IP address on a network interface other than on the default, what CMA file will they need to modify?

- A. vip_ip_index.conf
- B. vip_ip.conf
- C. vip_index.conf
- D. ip_vip.conf

Answer: C

Question No : 11 - (Topic 1)

All of the following can be configured on a Multi-Domain Management with Provider-1 MDS, EXCEPT:

- A. Analyze logs
- B. Firewall Module
- C. Firewall Manager
- D. Customer Logging Module

Answer: B

Question No : 12 - (Topic 1)

What directory would you find all the configuration files related to the CMA "Customer_1"?

- A. /opt/CPmnds-R71/Customer_1/
- B. /opt/CPmnds-R71/customers/Customer_1/CPsuite-R71/conf
- C. /opt/CPmnds-R71/customers/Customer_1/CPsuite-R71/fw1/conf
- D. /opt/CPmnds-R71/customers/Customer_1/CPsuite-R71/

Answer: A

Question No : 13 - (Topic 1)

Which command do you use to import data collected from a Security Management Server into a CMA created within a Multi-Domain Management with Provider-1 environment?

- A. upgrade_import
- B. mdscmd import
- C. This can only be done through the MDG, not at a command line
- D. cma_migrate

Answer: D

Question No : 14 - (Topic 1)

When does a SIC certificate expire for CMA/MDS?

- A. After 3 years
- B. After 5 years
- C. The interval is configurable.
- D. After 1 year

Answer: B

Question No : 15 - (Topic 1)

Upon boot, where is the script for the automatic start of the MDS processes located?

- A. /etc/init.d
- B. /var/init.d
- C. etc/init.D

D. var/etc/init.d

Answer: A

Question No : 16 - (Topic 1)

In Multi-Domain Management with Provider-1 R71, how many management modules can be configured for a particular customer?

- A. 2 (CMA and CMA-HA)
- B. 3 (CMA, CMA-HA1 and CMA-HA2/Security Mgmt-HA)
- C. unlimited
- D. 1 (CMA)

Answer: B

Question No : 17 - (Topic 1)

Which of the following are valid reasons for using Multi-Domain Management with Provider-1 instead of Management Servers?

1. Customer Security
2. Global Properties (NOT Global Policies)
3. Enhanced packet inspection
4. Centralized management

- A. 3 and 4
- B. 2 and 3
- C. 1 and 3
- D. 1 and 4

Answer: D

Question No : 18 - (Topic 1)

Administrators create and configure new CMAs in which mode?

- A. General View > Customer Contents
- B. Global Policies View > Security Policies
- C. General View > Network Objects
- D. General View > MDS Contents

Answer: A

Question No : 19 - (Topic 1)

On the Multi-Domain Container Server, you can find the Customer Management Add-On under what directory?

- A. /var/opt/CPmds-R71/customers/<customer directory>
- B. /var/CPcma-R71/<customer directory>
- C. /opt/CPcma-R71/<customer directory>
- D. /var/opt/CPmds-cmaID/<customer directory>

Answer: A

Question No : 20 - (Topic 1)

Which subdirectory under /opt contains installation and upgrade log files?

- A. CPInstLog
- B. CPlllog
- C. CPLogInst
- D. CPlog

Answer: A

Question No : 21 - (Topic 1)

What CLI command is used to set a Leading VIP Interface?

- A. mdsconfig
- B. cphaprob
- C. cpconfig