

# Lotus

## Exam 190-831

**Developing Web Sites using IBM Workplace Web Content Mgt2.5**

Version: 5.0

**[ Total Questions: 84 ]**

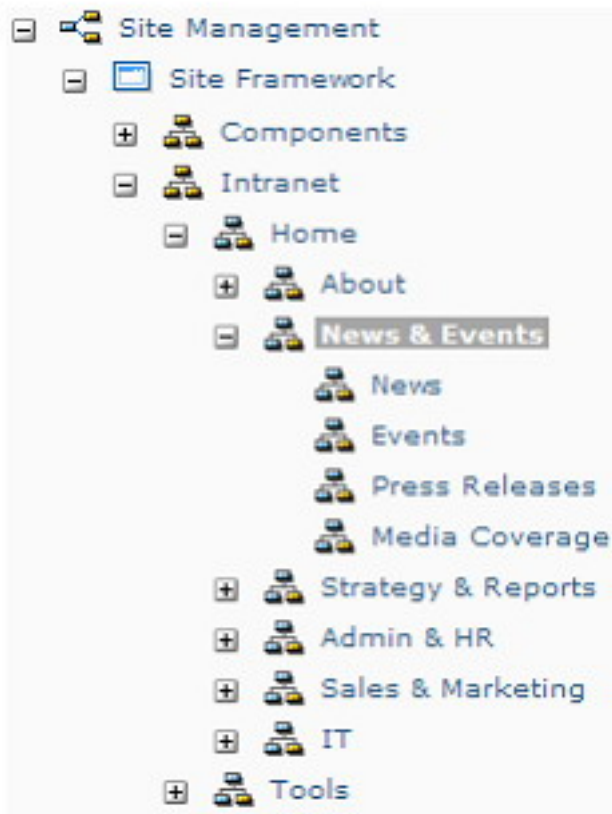
**Topic 0, A**

A

**Question No : 1 - (Topic 0)**

Refer to the exhibit.

David created a version of the News and Events site area. What must he do to retrieve a previous version of the "News" site area?



- A. There is no version of the "News" site area.
- B. Open the "News" site area and click the Restore button.
- C. Go to the version library and click the News and Events object. Click the Versions button. Select the News site area and click the Restore button.
- D. Go to the version library and expand the News and Events object. Select the News site area and click the Versions button. Click the Restore button.

**Answer: A**

**Question No : 2 - (Topic 0)**

XYZ Corporation has an Event content object published live on their Lotus Workplace Web

Content Management Web site. The Event must be removed from the live Web site, however it should NOT be deleted. Who can accomplish this task, and how can the task be accomplished?

- A. An editor can click the Restart Workflow button.
- B. An approver can click the Restart Workflow button.
- C. An approver can change the Publish Date field in the Workflow tab.
- D. An editor can click the Next Stage button to force the document to expire.

**Answer: B**

**Question No : 3 - (Topic 0)**

Maurice is a Workplace Web Content Management developer. His users need the ability to reference various HTML items to the content, and the HTML items must be displayed on the site. How can this be accomplished?

- A. Users click the Component button in the Contents section of the Content item to reference an HTML object.
- B. Maurice uses the Component Manager to add a component named "ComponentObject" to the authoring template. Users click the Component button in the Contents section of the content item to reference an HTML object.
- C. Maurice uses the Component Manager to add an HTML component. Maurice adds the `<AptrixCmpnt type="content" context="current" key="ComponentObject"/>` tag to the presentation template. Users click the HTML component to add a reference
- D. Maurice uses the Component Manager to add a component named "ComponentObject" to the authoring template. Maurice adds the `<AptrixCmpnt type="content" context="current" key="ComponentObject"/>` tag to the presentation template. Users click the Component button in the Contents section of the content item to reference an HTML item.

**Answer: D**

**Question No : 4 - (Topic 0)**

Version control has just been enabled on Cedelia's Workplace Web Content Management server. She can create versions of new items, but not of items created before version control was enabled. Which one of the following answers will enable versioning of items created before version control was enabled?

- A. administrator must restart the Workplace Web Content Management application.
- B. An administrator must enter this URL in a browser:  
`http://[HOST]:[PORT]/wps/wcm/connect/?MOD=AJPEGUI`

C. An administrator must enter this URL in a browser:

http://[HOST]:[PORT]/wps/wcm/connect/?MOD=VersioningEnablement

D. An administrator must enter this URL in a browser:

http://[HOST]:[PORT]/wps/wcm/connect/?MOD=AJPEResourceChecker&fix=true

**Answer: C**

**Question No : 5 - (Topic 0)**

Jon is a Lotus Workplace Web Content Management content creator. He has exported a Microsoft Word document to HTML, which he expects to import into the body of a content object; however, the HTML document contains many elements which increase the size of the HTML document and are superfluous to the Web site. How can he filter them out?

A. Use the Microsoft Office 2000 HTML Filter 2.0.

B. From Microsoft Word, save as an HTML document.

C. Specify HTML instead of rich text for the body in the content item.

D. Import the Microsoft Word document directly, without exporting it to HTML.

**Answer: A**

**Question No : 6 - (Topic 0)**

The Tornados football team wants to list their games chronologically on their Workplace Web Content Management Web site. How can this be accomplished?

A. For each content item, a content creator enters the game date in the General Date One field and restarts the workflow. The content proceeds through workflow. A developer creates a menu which uses General Date One as a Sort Key.

B. For each content item, a content creator enters the game date in the General Date One field and restarts the workflow. The content proceeds through workflow. A developer creates a navigator which uses General Date One as a Sort Key.

C. For each existing content item, a content approver must restart the workflow. A content creator then enters the game date in the General Date One field of each content item and the content proceeds through workflow. A developer creates a menu which uses General Date One as a Sort Key.

D. For each existing content item, a content approver must restart the workflow. A content creator then enters the game date in the General Date One field of each content item and the content proceeds through workflow. A developer creates a navigator which uses General Date One as a Sort Key.

**Answer: C**

**Question No : 7 - (Topic 0)**

XYZ Corporation has a product information content item published live on their Workplace Web Content Management Web site. The product information has changed; therefore, the content must be updated. How can the item be sent back through the workflow while it remains on the live Web site, and what happens to the previous version once the updated item is published?

- A.** A content approver clicks the Save Version button. The previous version is retained in the Version Library.
- B.** A content approver clicks the Create Draft button. The previous object is replaced by the updated copy.
- C.** A content approver clicks the Restart Workflow button. The previous version is retained in the version library.
- D.** An editor clicks the Save As button to create a new version of the document. A content approver opens the previous version and clicks the Restart Workflow button to put it into Draft mode.

**Answer: B**

**Question No : 8 - (Topic 0)**

Barney needs certain content to display differently in various sections of his company's Workplace Web Content Management Web site. Which one of the following answers will accomplish this?

- A.** Apply different authoring templates in various site areas.
- B.** Apply different presentation templates in different site areas.
- C.** Use the <AprixCmpnt> tag in each presentation template to refer to the appropriate authoring template.
- D.** Use the <AprixLibCmpnt> tag in each presentation template to refer to the appropriate authoring template.

**Answer: B**

**Question No : 9 - (Topic 0)**

Jasper is a Workplace Web Content Management developer. He wants to display certain content with a menu component. Which one of the following answers may he use as criteria?

- A. Site and site areas
- B. Taxonomy and categories
- C. General Date One and keywords
- D. Categories and authoring templates

**Answer: D**

**Question No : 10 - (Topic 0)**

Zak needs visitors to his company Web site to be able to log in and select personal categories. He will then use a menu to display items to each user that match that user categories. Which one of the following answers should Zak use?

- A. A Menu Component only
- B. A Username Component only
- C. A Menu Component with a Taxonomy Component
- D. A Menu Component with a Username Component

**Answer: C**

**Question No : 11 - (Topic 0)**

Damian is building a Workplace Web Content Management Web site. He will create menus to display the content. He wants the authors to decide which content items will be displayed in which menu, but wants them to choose from a predefined list of choices. Which one of the following answers will allow him to do this?

- A. Keywords
- B. Categories
- C. A taxonomy and a list of keywords
- D. A category taxonomy and a list of categories

**Answer: D**

**Question No : 12 - (Topic 0)**

Herman is a Workplace Web Content Management developer. What must he do in order for his Events site area to properly display as a Web page?

- A. He must create a content item and select the Events category in the Profile section.
- B. He must create a content item and choose the Events site area as the content's site area
- C. He must create a content item and reference this in the Event site area item Default Content field.
- D. He must reference the Event authoring template and Detail presentation template in the authoring template and presentation template fields of the Event site area item.

**Answer: C**

**Question No : 13 - (Topic 0)**

Ace needs to preview content that is linked to more than one site area. When Ace previews the content, which one of the following site areas will be used?

- A. The primary site area.
- B. The first site area in the framework.
- C. A dialog box will open allowing him to choose a site area.
- D. A dialog box will open allowing him to choose a presentation template, which refers to the site area.

**Answer: C**

**Question No : 14 - (Topic 0)**

Hannah is the Information Architect for the XYZ Corporation. She has designed the site map for the Workplace Web Content Management Web site. From the site map, what will Madeline, the developer, create using Hannah's information?

- A. The Menu items
- B. The presentation templates
- C. The site framework
- D. The category taxonomy

**Answer: C**

**Question No : 15 - (Topic 0)**