

Oracle 1z0-241

**1z0-241 PeopleSoft Application Developer I: People
Tools & PeopleCode
Practice Test
Version 1.1**

QUESTION NO: 1

You write a PeopleCode program that checks whether the user is selecting an existing search key value on the Search page or creating a new search key value. Which system variable do you use?

- A. %Add
- B. &Add
- C. %Mode
- D. &Mode
- E. %Search
- F. &Search

Answer: C

QUESTION NO: 2

Which three statements are true regarding Query Profile? (Choose three.)

- A. The Query Profiles page enables users to run existing queries and create new ones.
- B. The Query Profiles page enables you to specify the type of access that users have when they work with PeopleSoft Query.
- C. By default, the query profile does not give users access to all PeopleSoft Query features, even if you gave them access to PeopleSoft Query.
- D. If a user has more than one permission list, PeopleSoft Query uses the highest time-out value as defined in the Time-out Minutes section of the user's permission lists.
- E. The Query Profiles page enables you to restrict the types of queries that users can create, limit the number of rows returned, or set the time that a query can run before it times out.
- F. By default, the Only Allowed to Run Queries option on the Query Profiles page is selected, and each permission list that is granted to a user or role has the possibility to have capabilities added.

Answer: B,D,E

QUESTION NO: 3

Examine this PeopleCode snippet:

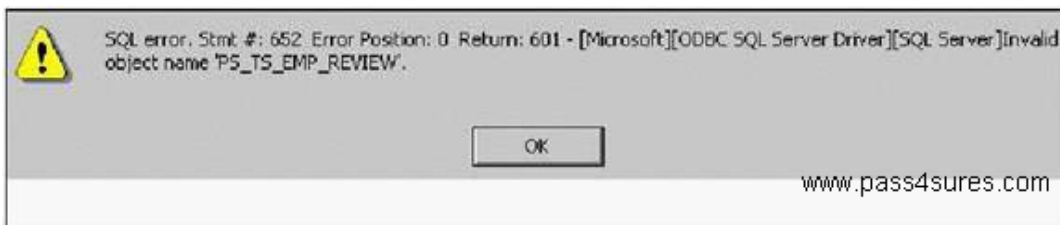
```
class OCP_ROWSET extends Rowset;
property integer FilledRowCount get;
method OCP_ROWSET(&strRecName As string, &strDataFld As
string, &strGetOrCreate As string);
method InsertRow(&iRow As integer) Returns boolean;
Select the correct statements. (Choose all that apply.)
```

- A. OCP_ROWSET is the constructor method for the OCP_ROWSET class.
- B. Executing the RO_ROWSET method instantiates an object of the OCP_ROWSET class.
- C. The OCP_ROWSET method runs automatically whenever an object is instantiated using the OCP_ROWSET class.
- D. The OCP_ROWSET method must initialize the ROWSET class.
- E. The OCP_ROWSET method is added to the ROWSET class, and, by extension, to any instances of the ROWSET class.

Answer: A,C,D

QUESTION NO: 4

View the Exhibit:



You are testing an application that you just completed. You access the content reference and select a search key. When you click the Search button, you see the error shown in the image. Select the next course of action.

- A. Remove the PS_TS_EMP_REVIEW field from the record definition.
- B. Run the Alter process for the PS_TS_EMP_REVIEW record definition.
- C. Run the Build process for the PS_TS_EMP_REVIEW record definition.
- D. Examine the record definition properties and manually create a BUILD script.
- E. Verify that you created and properly configured the PS_TS_EMP_REVIEW page.

Answer: C

QUESTION NO: 5

Are parameters passed to user-defined internal and external PeopleCode functions by reference or by value?

- A. The first parameter is the input parameter, and the second parameter is output parameter.
- B. User-defined internal and externalPeopleCode function parameters are always passed by value.
- C. User-defined internal and externalPeopleCode function parameters are always passed by reference.

- D. User-defined internal and externalPeopleCode function parameters can be passed as input or as output, depending on the function.
- E. User-defined internal and externalPeopleCode function parameters can be passed by reference or by value, depending on the function.

Answer: C

QUESTION NO: 6

Select the two rules about PeopleSoft prompt table mechanics. (Choose two.)

- A. The prompt matches fields based on name, data type, and length.
- B. The prompt automatically filters the rows based on higher-level key values in the buffer.
- C. The prompt selects the highest-level key on the prompt record definition unless the EFFDT field is present.
- D. The prompt automatically selects for the lowest-level key on the prompt record definition ignoring the EFFDT and EFF_STATUS fields.

Answer: B,D

QUESTION NO: 7

Select the two characteristics of summary pages that set them apart from non-summary pages. (Choose two.)

- A. They are display-only.
- B. They contain only level zero.
- C. They typically contain no related fields.
- D. They reference one record definition.

Answer: A,C

QUESTION NO: 8

Here is a partial list of events in the Component Processor flow.

1. SQL select
2. Search page
3. Record defaults
4. Add row to buffer
5. Standard system field edits
6. Wait for user interaction

What is the correct order?

- A. 1, 2, 3, 4, 5, 6
- B. 2, 1, 4, 3, 6, 5
- C. 6, 2, 1, 4, 3, 5
- D. 2, 1, 3, 4, 5, 6
- E. 2, 4, 5, 1, 3, 6

Answer: B

QUESTION NO: 9

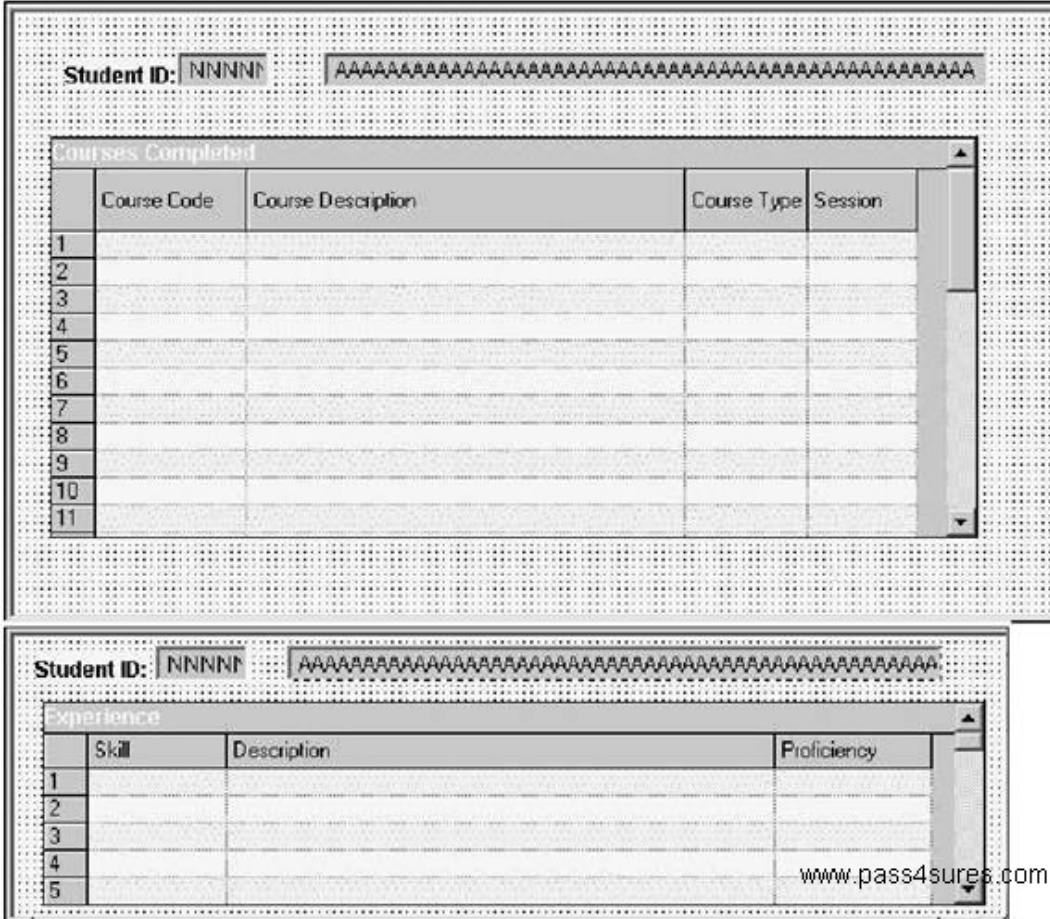
Select the three primary advantages of using the Message Catalog. (Choose three.)

- A. Messages are reusable.
- B. You can enter messages through a browser.
- C. Developers can secure messages through Definition Security.
- D. Developers can search for and use messages in Application Designer.
- E. Messages in the catalog are easier to translate in globalization situations.

Answer: A,B,E

QUESTION NO: 10

View the Exhibits:



Examine the two pages and select the correct statement.

- A. You can group these pages in the same component.
- B. You cannot group these pages in the same component.

Answer: A

QUESTION NO: 11

Select the four items that you can use as translate values for the COLOR field. (Choose four.)

- A. BLK
- B. W-02
- C. BRWN
- D. PURPL
- E. BLACK
- F. 1-BL

Answer: A,B,C,F

QUESTION NO: 12

View the Exhibit:

1	<pre>If All(PSU_CRS_SESSN.START_DATE, PSU_CRS_SESSN.END_DATE) And PSU_CRS_SESSN.START_DATE > PSU_CRS_SESSN.END_DATE Then Error MsgGet(1040, 3, "Message Not Found") End-If;</pre>
2	<pre>If PSU_EMP_RVW_RVR.REVIEW_TYPE = "E" Then COMMENT Reviewer is an employee; COMMENT Disable REVIEWER_ID; PSU_EMP_RVW_RVR.REVIEWER_ID.Value = PSU_EMP_RVW_RVR.EMPLID; PSU_EMP_RVW_RVR.REVIEWER_ID.Enabled = False; End-If;</pre>
3	<pre>Local Message &request, &response; Local Row &Row; Local Rowset &Rowset;</pre>
4	<pre>Local Field &Crstype; &Crstype = GetField(PSU_COURSE_TBL.COURSE_TYPE); &Crstype.Value = "H"; &Crstype.Enabled = False;</pre>
5	<pre>&OLD_PRICE > &TOTAL_PRICE; &TOTAL_PRICE = &QTY_ORDERED * &PRICE; &GRAND_TOTAL = &GRAND_TOTAL + &TOTAL_PRICE; &OLD_PRICE;</pre>

Which two PeopleCode snippets contain syntax errors? (Choose two.)

- A. 1
- B. 2
- C. 3
- D. 4
- E. 5

Answer: B,E**QUESTION NO: 13**

View the Exhibit:

Will this component be accessed as target content or as a homepage pagelet?

Target Content Homepage Pagelet

Portal Name: EMPLOYEE

Folder Name: PSU_EMPLOYEE

Content Reference Name: TS_EMP_REVIEW_GBL

Content Reference Label: Appraisals

Long Description (254 Character): Enter, modify, and view employee reviews

Sequence Number: 5 Product: PT

Template Name: DEFAULT_TEMPLATE

Object Owner Id:

Node Name: PSFT_TRN

Always use default local node?

Enter the base URI to be used when you click the "Open Selected" buttons. Example: http://localhost/psp/ps/

"Open" URI Base: http://eddp140p1.us.oracle.com:8010/psp/T1B84801/ www.pass4sures.com

You begin to register a component using the registration wizard. Based on the values that appear in the dialog box, select the best course of action.

- A. Continue registering the component as it is.
- B. Stop the registration process to investigate why this component is already registered.
- C. Change the user-facing fields to mixed case and make them less technical and then continue registering the component.

Answer: A

QUESTION NO: 14

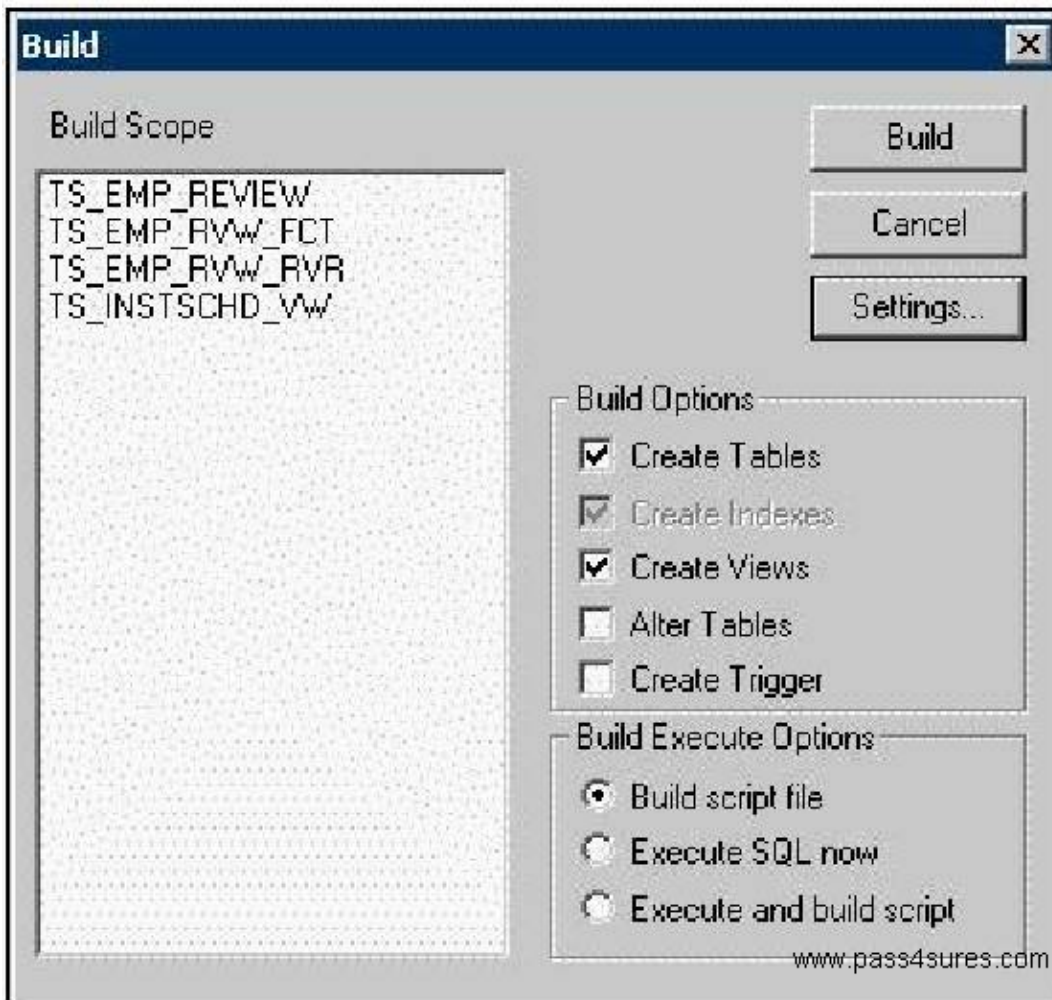
Select the three tasks that you can perform using the Registration Wizard.
(Choose three.)

- A. Add pages to existing components.
- B. Add components to existing menus.
- C. Add components to a portal registry.
- D. Add components to a permission list.
- E. Create new menus and add components to the new menus.

Answer: B,C,D

QUESTION NO: 15

View the Exhibit:



Based on this Build dialog box, select the two options that are true. (Choose two.)

- A. When you click the Build button, the TS_EMP tables are created.
- B. When you click the Build button, nothing happens to your database.
- C. When you click the Build button, the TS_EMP tables may lose existing data.
- D. When you click the Build button, the TS_INSTSCHD_VW view is created.
- E. When you click the Build button, Application Designer generates a script file.

Answer: B,E

QUESTION NO: 16

What type of PeopleCode looping construct continues to loop as long as the logical_expression evaluates to TRUE?

- A. For
- B. While

- C. Do While
- D. Do Until
- E. Repeat-Until

Answer: B

QUESTION NO: 17

View the Exhibit.

Look Up State

Country: JPN

State: begins with

[Basic Lookup](#)

Search Results

View All First 1-47 of 47 Last

State	Description
01	Hokkaido
02	Aomori-Ken
03	Iwate-Ken
04	Miyagi-Ken
05	Akita-Ken
06	Yamagata-Ken
07	Fukushima-Ken

www.pass4sures.com

Select the prompt record definition that generates the Look Up State prompt dialog page as displayed.