

Oracle

Exam 1z0-419

Oracle Application Development Framework 12c Essentials

Version: 7.0

[Total Questions: 87]

Question No : 1

Which statement is false? (Choose the best answer)

- A. A panelDashboard has the same rowHeight (or all the rows
- B. AFStretchWidth in the style class of a panelGroupLayout causes it to fill the page horizontally
- C. panelGroupLayout cannot have a vertical scroll bar
- D. panelBox stretches if placed inside a panelStretchLayout center facet

Answer: C

Question No : 2

Consider a case where a view does not load with the expected data. Where would you set a breakpoint to debug the issue? (Choose the best answer.)

- A. the executable binding for the iterator on the pagedef for the view
- B. a router activity that is used to determine where to send the user after selecting a row in the view
- C. the partialTriggers property of the data bound component in the view
- D. the value binding for the iterator on the pagedef for the view

Answer: D

Question No : 3

Which three statements are true about declarative features of view objects? (Choose three.)

- A. You can use view object bind variables to parameterize a view object where clause with values supplied at run time.
- B. By default, a view object instance retrieves all database rows into the view object cache.
- C. To implement master-detail behavior between two view object instances, you define an association between those instances.
- D. a view accessor defines a validation expression that you apply to a view object attribute.
- E. A view object can include attributes whose values are based on SQL expressions rather than mapping directly to a database column
- F. A view object definition can include many view criteria but you can choose which view criteria to apply for each view object instance.

Answer: A,C,E

Question No : 4

Consider the JSF managed bean code to execute a function in ADF Business Components via an af:button actionListener on a page:

```
public void doSomething(ActionEvent event) {  
  
BindingContainer bindings = BindingContext.getCurrent().getCurrentBindingsEntry();  
OperationMethod method = bindings.getOperationBinding  
  
("appModuleMethod");  
  
Map paramsMap = method.getParamsMap();  
  
paramsMap.put ("someParameter", "someValue");  
  
method.execute();  
  
}
```

Which three options must be implemented for this code to work? (Choose three.)

- A.** For the page definition file this code is called from, it must have a <methodAction> binding mapped to the ADF BC data control application module function
- B.** For the page definition file this code is called from, it must have a <parameter> binding mapped to the parameters of the ADF BC data control application module function.
- C.** An appModuleMethod function must exist in the ADF BC application module to call from the <methodAction> binding.
- D.** An appModuleMethod function must be exposed through the client interface editor of the ADF BC application module.

Answer: A,B,C

Question No : 5

Which two statements are true about the Key Exists validator? (Choose two.)

- A.** it always issues a select to the database to ensure all data is up to date.
- B.** it first checks the cache for match and then goes to the database only if necessary.
- C.** it cannot validate any data changes that happened in the current transaction that have not yet been committed to the database.

- D. it can validate any data changes that happened in the current transaction that have not yet been committed to the database.
- E. it can be used only with attributes that are defined as primary keys in the database.

Answer: B,D

Question No : 6

You are prototyping an ADF application that uses ADF Business Components. However, the database schema that you can connect to does not contain any table. Which two declarative options are available to you to provide hard-coded data for the purposes of your prototype? (Choose two.)

- A. entity objects with default values
- B. placeholder data control
- C. static list view objects
- D. declarative managed beans

Answer: B,C

Question No : 7

What should be in a managed bean, rather than a backing bean? (Choose the best answer.)

- A. code that manipulates the color of a text field on a JSF page
- B. data that is used to decide if a field is shown as mandatory or not
- C. data that is used on another page in the task flow
- D. code that opens a pop-up in the page

Answer: C

Question No : 8

Which three statements are true about using a `dvt:map` component on a page? (Choose three.)

- A. You need to define a connection to a server that provides map images.
- B. You can use an exact street address to show a point theme.

- C. There is no way to display the distance between two points on a map.
- D. You can modify the icon used to represent a point on a map.

Answer: A

Question No : 9

You have two entities, ItemEO and ProductEO. ItemEO contains the OrderId, itemId, ProductId, Price, and Quantity attributes. ProductEO contains the Id, ProductName, and ListPrice attributes You need to return rows as shown in the table

OrderId

ItemId

ProductId

ProductName

101

1001

34321

Ski hat

101

100?

38997

Downhill ski poles

102

1003

30315

Swim goggles

103

1004

31876

Baseball mitt

How would you create a view object to encapsulate these rows? (Choose the best answer)

- A.** Create a view object based on the ItemEO entity and add ProductEO as a reference entity.
- B.** Create a view object based on the ItemEO entity and modify the generated query to include SELECT ProductEO NAME. ProductEOJD, FROM S_PRODUCT ProductEO.
- C.** Create a view object based on the ItemEO entity and modify the WHERE clause to include ItemEO PRODUCTJD = ProductEO ID
- D.** Create a view object based on the ItemEO entity and create a view criteria to add ItemEO PRODUCTJD - :productId. Define productId as a bind variable to be passed in by the UI
- E.** Create a view object based on the ItemEO entity and change the query mode to Expert Define the query as SELECT Item ORDJD, Item ITEMJD, Item.PRODUCTJD, Product.NAME, FROM SJTEM Item JOIN S_PRODUCT Product ON Item.PRODUCT_ID=ProductId.

Answer: E

Question No : 10

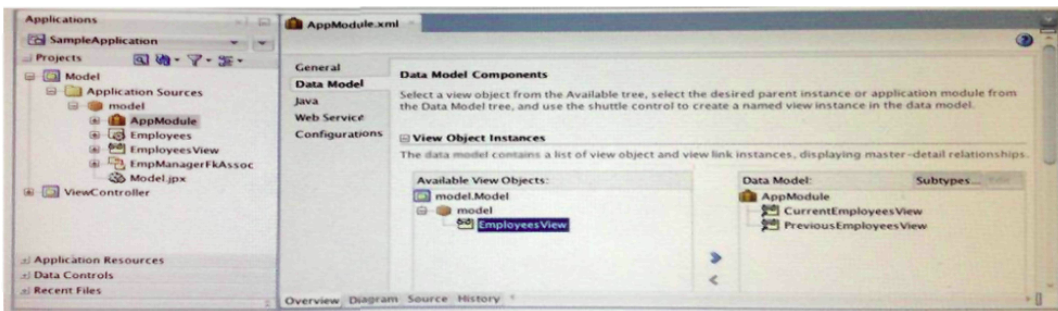
When creating a bounded task flow that uses ADF Business Components, which two steps do you need to perform to enable the task flow to manage its own transaction"? (Choose two.)

- A.** Define transaction properties at the task-flow level
- B.** Include a phaseListener in a managed bean with methods for commit and rollback
- C.** Add the application module commit and rollback operations as buttons or links on the last JSF page of the flow
- D.** Define task flow return activities in the flow and associate "End transaction" attribute values with them

Answer: A,D

Question No : 11

View the Exhibit



Which three options are true about the scenario in the Exhibit? (Choose three)

- A. Two separate view object instances allow you, at run time, to maintain two separate current row indicators on each instance respectively, to display separate records at the same time.
- B. Two separate view object instances defined through the same application module create separate entity object caches, allowing users to modify records in their own independent transactions.
- C. Two separate view object instances exposed through the application module allow you to apply separate view criteria and bind variable values to show separate result sets.
- D. Under the relating AppModuleDataControl in the JDeveloper Data Controls window, each view object instance appears as a separate selectable data collection
- E. ADF Faces restricts developers from using the same view object instance across pages, so developers at design time must create multiple separate view object instances.

Answer: A,C,D

Question No : 12

During design time, you define two root application modules, each with a single view object. At run time, you have a single page exposing each view object as a separate table on the same page. Three users access the page at run time simultaneously

Disregarding application module pooling, how many application module instances are instantiated to serve the three users at run time? (Choose the best answer.)

- A. 0
- B. 1
- C. 2
- D. 3
- E. 6

Answer: E

Question No : 13

Select three options that page template developers can use when creating a page template. (Choose three.)

- A. Create a page template based on a quick start layout.
- B. Create a page template based on an existing JavaServer Faces (JSF) page.
- C. Create a JavaServer Faces Fragment (JSFF) and register it as a page template.
- D. Create a page template based on an existing template.
- E. Create a page or fragment from a blank layout and register it as a page template.
- F. Create a page template from a blank layout.

Answer: B,D,F

Question No : 14

What is the first step you perform to secure an ADF application? (Choose the best answer.)

- A. Edit the web.xml file and adf-config.xml file to include the ADF authentication servlet configuration.
- B. Merge the application roles into the deployment server's roles.
- C. Define a lifecycle listener to intercept the HTTP request for the application's URL
- D. Use the Configure ADF Security wizard to enable security for the application.
- E. Create a login page and run the application authenticated as the test-all user.

Answer: D

Question No : 15

View the Exhibit