

# Cisco

## Exam 300-460

### Implementing and Troubleshooting the Cisco Cloud Infrastructure

Version: 7.0

[ Total Questions: 60 ]

**Question No : 1**

A Cisco UCS Director administrator is configuring vHBA. Which four fields are needed to configure vHBA? (Choose four.)

- A. vHBA Name
- B. Adapter Policy
- C. Template Type
- D. Organizations
- E. Description
- F. Fabric ID
- G. UCS Organization Name
- H. UCS Account Name

**Answer: A,C,E,F**

Reference: [http://www.cisco.com/c/en/us/td/docs/unified\\_computing/ucs/ucs-director/ucs-mgmt-guide/4-](http://www.cisco.com/c/en/us/td/docs/unified_computing/ucs/ucs-director/ucs-mgmt-guide/4-)

[0/b\\_Cisco\\_UCS\\_Director\\_UCS\\_Management\\_Guide\\_40/b\\_Cisco\\_UCS\\_Director\\_UCS\\_Management\\_Guide\\_40\\_chapter\\_0101.html#concept\\_930C11B6473846DDA5F7F25E88EC8F33](http://www.cisco.com/c/en/us/td/docs/unified_computing/ucs/ucs-director/ucs-mgmt-guide/4-0/b_Cisco_UCS_Director_UCS_Management_Guide_40/b_Cisco_UCS_Director_UCS_Management_Guide_40_chapter_0101.html#concept_930C11B6473846DDA5F7F25E88EC8F33)

**Question No : 2**

Which two statements about virtual networks in a Cisco-powered private cloud are true? (Choose two.)

- A. After the last VM is shutdown, the associated virtual network is gone for garbage collection.
- B. The last vNIC can be deleted issuing the command **no interface virtual**.
- C. Virtual networks are abstractions whose state is stored in the orchestration layer.
- D. N1KV supports dynamic routing on virtual networks.
- E. Issue the **show module** command in virtual supervisor module to view virtual network mapping with VM.

**Answer: D,E**

**Question No : 3**

A Cisco USC Director administrator is viewing the workflow input and output status of a service request. Which option lists the steps that accomplish this task?

**A.** On the menu bar, choose **Organizations > My Approvals**.

Choose a user group.

Click the **Service Request** tab.

Choose a service request.

Click **View Details**, and choose the **Log** tab.

**B.** On the menu bar, choose **Organizations > Virtual Resources**.

Click the **Service Requests** tab.

Choose the service request.

Click **View Details**, and choose the **Input/Output** tab.

**C.** On the menu bar, choose **Organizations > Service Requests**.

Click the **Service Requests** tab.

Choose the service request.

Click **View Details**, and choose the **Input/Output** tab.

**D.** On the menu bar, choose **Organizations > Service Requests**.

Choose a user group.

Click the **Service Request** tab.

Choose a service request.

Click **View Details**, and choose the **Log** tab.

**Answer: D**

Reference: [http://www.cisco.com/c/en/us/td/docs/cloud-systems-management/intercloud-fabric/2-1-2/user-](http://www.cisco.com/c/en/us/td/docs/cloud-systems-management/intercloud-fabric/2-1-2/user-guide/icf/b_Cisco_Intercloud_Fabric_User_Guide_Release_2_1_2/b_Cisco_Intercloud_Fabric_User_Guide_Release_2_0_chapter_01000.html)

[guide/icf/b\\_Cisco\\_Intercloud\\_Fabric\\_User\\_Guide\\_Release\\_2\\_1\\_2/b\\_Cisco\\_Intercloud\\_Fabric\\_User\\_Guide\\_Release\\_2\\_0\\_chapter\\_01000.html](http://www.cisco.com/c/en/us/td/docs/cloud-systems-management/intercloud-fabric/2-1-2/user-guide/icf/b_Cisco_Intercloud_Fabric_User_Guide_Release_2_1_2/b_Cisco_Intercloud_Fabric_User_Guide_Release_2_0_chapter_01000.html)

**Question No : 4**

```
Fabric ID: B
Path ID: 1
VIF    vNIC    Link State    Oper State    Prot State    Prot Role    Admin Pin    Oper Pin    Transport
-----
795    eth0    Up            Active        Passive       Backup       0/0          0/8         Ether
798    eth2    Up            Active        Active        Backup       0/0          0/11        Ether
800    eth3    Up            Active        Active        Primary      0/0          0/8         Ether
802    eth1    Up            Active        No protection  Unprotected  0/0          0/1         Ether
806    fcl     Up            Active        No protection  Unprotected  0/0          2/1         Fc
8997   |       Error        Error         No protection  Unprotected  0/0          0/0         Ether
9303   |       Up           Active        No protection  Unprotected  0/0          0/0         Ether
```

Refer to the exhibit. Cisco UCS Fabric interconnect A and B have identical uplink configurations. Which option describes the problem of Fabric interconnect A?

- A. Ethernet0/11 on Fabric interconnect A is down.
- B. The IOM on Fabric interconnect A was rebooted.
- C. FC2/1 on Fabric interconnect A is unplugged or has been replaced with a GLC-T.
- D. Fabric interconnect A is powered off.

**Answer: C**

**Question No : 5**

Which four fields are needed when creating a WWPN pool in Cisco UCS Director? (Choose four)

- A. the first and last WWPN address in the block
- B. the number of WWPN addresses in the block
- C. a unique name for the initiator
- D. the first WWPN address in the block
- E. the WWN for the initiator
- F. a unique name for the pool
- G. the last WWPN address in the block
- H. a description for the pool

**Answer: A,B,F,H**

Reference:

[http://www.cisco.com/c/en/us/td/docs/unified\\_computing/ucs/sw/gui/config/guide/2-2/b\\_UCSM\\_GUI\\_Configuration\\_Guide\\_2\\_2/b\\_UCSM\\_GUI\\_Configuration\\_Guide\\_2\\_2\\_chapter\\_011001.html#task\\_8717496137259896828](http://www.cisco.com/c/en/us/td/docs/unified_computing/ucs/sw/gui/config/guide/2-2/b_UCSM_GUI_Configuration_Guide_2_2/b_UCSM_GUI_Configuration_Guide_2_2_chapter_011001.html#task_8717496137259896828)

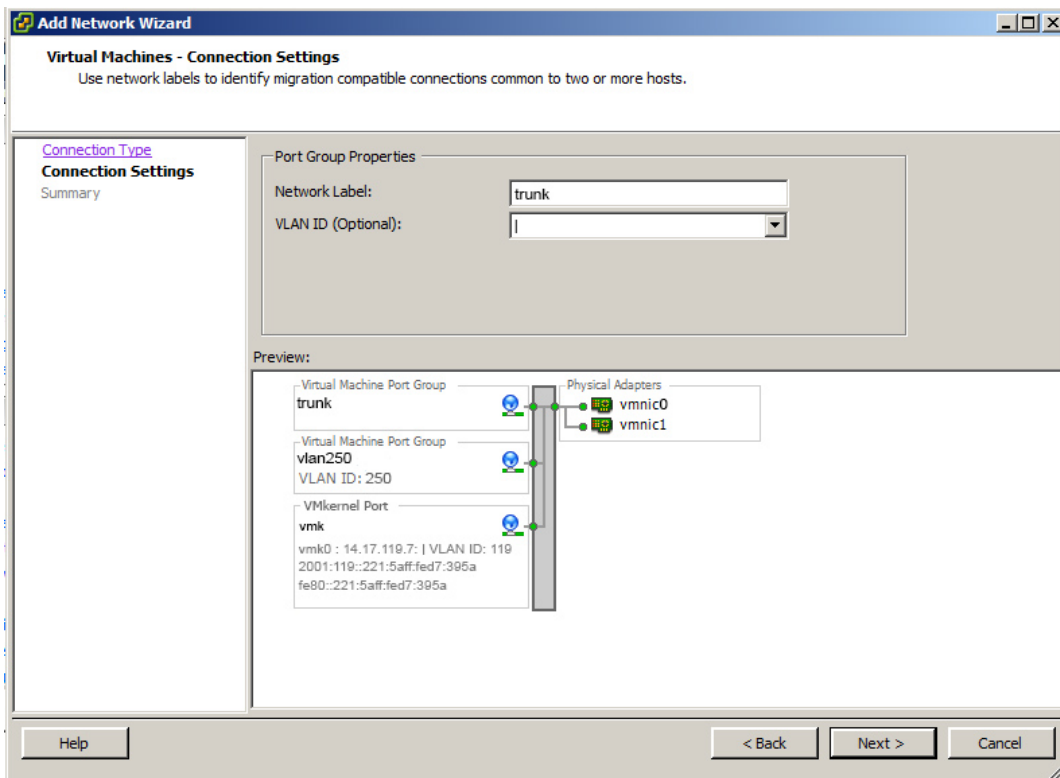
**Question No : 6**

A Cisco UCSM administrator has been tasked with deploying a new data center. Which two recommendations aid in the ability to associate a service with a server? (Choose two.)

- A. The host control setting for a QoS policy applies to vNICs only. It has no effect on a vHBA.
- B. You can assign only a QoS policy to a vHBA if the priority setting for that policy is set to fc, which represents the Fibre Channel system class.
- C. The host control setting for a QoS policy applies to vHBAs only.
- D. Power capping is supported for rack servers. If you include a power control policy in a service profile that is associated with a rack-mount server, the policy is implemented.

Answer: B,D

Question No : 7



Refer to the exhibit. You have been asked to create a trunking (802.1 q) port group on a VMware vSwitch. Which number must be assigned as the VLAN ID to trunk all VLANs?

- A. 4095
- B. 1
- C. 1-4095
- D. 0

Answer: C

**Question No : 8**

A Cisco USC Director administrator is configuring his pod on the Physical > Compute Tab. Which three tabs are available under this menu? (Choose three.)

- A. UCS Chassis
- B. Datastore Capacity Report
- C. CloudSense
- D. Chargeback
- E. Compute Servers
- F. Compute Accounts

**Answer: A,E,F**

Reference:

**Question No : 9**

Which two pieces of information are needed when adding an NFS mount point in Cisco UCS Director? (Choose two.)

- A. the IP address of the NFS server where you plan to store the OS images for Bare Metal Agent to use
- B. the locate and organization where the NFS server is located
- C. the IP address of the IP share storage system
- D. the location of the NFS server where the OS images are stored

**Answer: A,D**

Reference: [http://www.cisco.com/c/en/us/td/docs/unified\\_computing/ucs/ucs-director/bma-install-config/5-2/b\\_ucsd\\_bma\\_install\\_config\\_guide\\_5\\_2/b\\_ucsd\\_bma\\_install\\_config\\_guide\\_5\\_2\\_chapter\\_0110.html#task\\_FB4A6403CF4F4650B31A8C2C6FF4E69F](http://www.cisco.com/c/en/us/td/docs/unified_computing/ucs/ucs-director/bma-install-config/5-2/b_ucsd_bma_install_config_guide_5_2/b_ucsd_bma_install_config_guide_5_2_chapter_0110.html#task_FB4A6403CF4F4650B31A8C2C6FF4E69F)

**Question No : 10**