

**Cisco 350-026**

**CISCO 350-026 CCIE SP Content Networking ENU**

# **Practice Test**

Version 1.1

**QUESTION NO: 1**

In Frame Relay, what devices resend packets that do not transmit correctly?

- A. Digital transmission media cabled to monitor ports, as opposed to straight DCE signaling
- B. Network switches running SNMP management software
- C. Special bridging devices within the backbone cloud
- D. Network end stations

**Answer: D**

**QUESTION NO: 2**

What is the proper format for the inverse DNS mapping for the following address: 198.133.219.25?

- A. 198.133.219.25.in-addr.arpa.
- B. 198.133.25.219.in-addr.arpa.
- C. 0.219.133.198.in-addr.arpa.
- D. 25.219.133.198.in-addr.arpa.
- E. 198.133.219.0.in-addr.arpa.

**Answer: D**

**QUESTION NO: 3**

A new Cisco router has no configuration defined. Which methods can be used to configure the router for the first time? (multiple answer)

- A. Connecting a terminal to the console port, defining a minimal configuration, connecting the router to the network, and using TFTP to download a configuration file that has been created ahead of time
- B. Connecting a terminal to the console port and directly typing in configuration commands
- C. Connecting a terminal to the console port and running the Setup dialogue
- D. Using BOOTP/SLARP/RARP to download a configuration file that has been created ahead of time
- E. Using SNMP via a network management station

**Answer: A,B,C,D**

**QUESTION NO: 4**

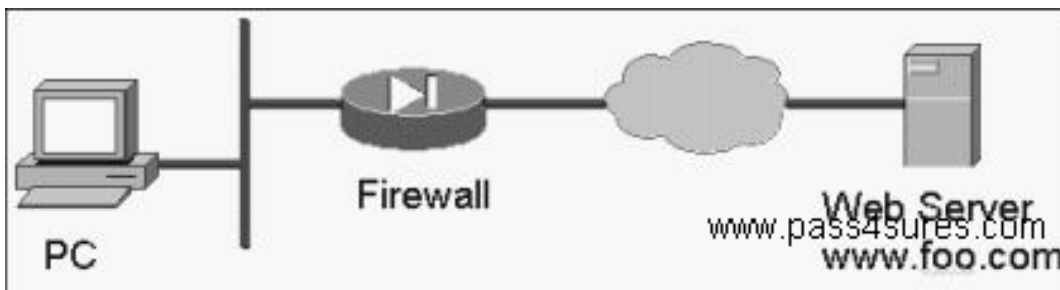
What does CSG do to traffic that does not match a content rule?

- A. Forwards, always
- B. Drops, always
- C. None of the above
- D. Forwards, when CSG is used in routed mode, drops otherwise
- E. Forwards, when CSG is used in bridged mode, drops otherwise

**Answer: E**

#### QUESTION NO: 5

Click the Exhibit button. A client at the PC is unable to browse to <http://www.foo.com>. On the firewall, what list of traffic types needs to be passed to allow browsing?



- A. tcp 25, ssl, dns
- B. icmp, udp 1645, tcp 8080
- C. ftp,smtp, dns
- D. icmp, tcp 49, tcp 443
- E. udp 53, tcp 80, ftp

**Answer: E**

#### QUESTION NO: 6

Select the group of technologies which are listed in descending order of bandwidth scale:

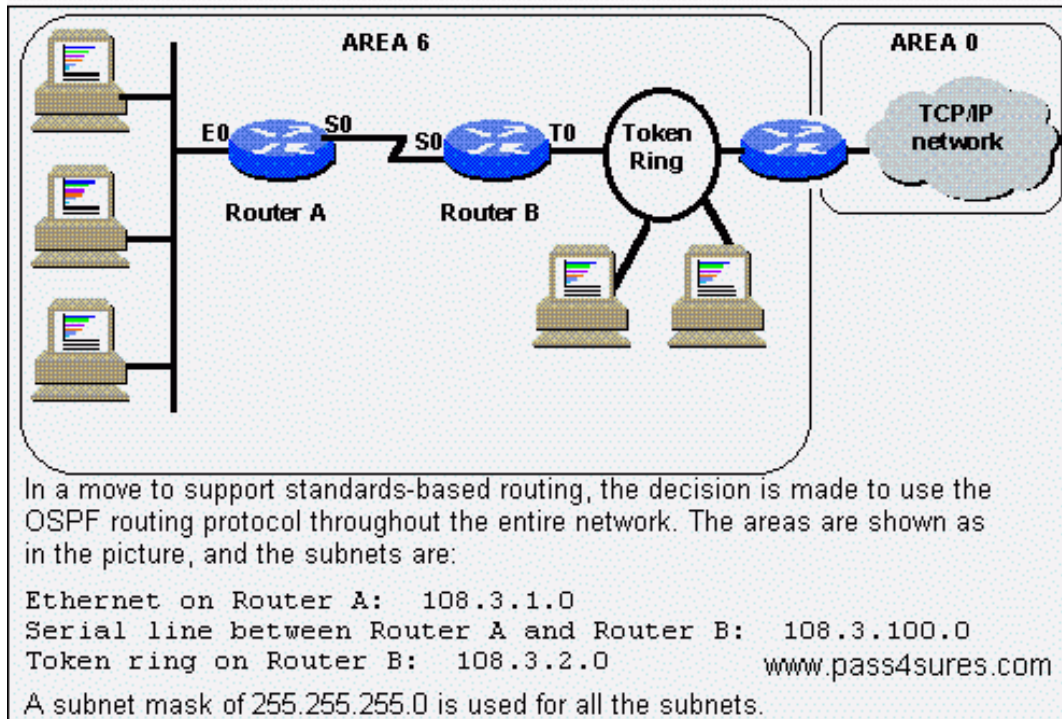
- A. DWDM, SDH, Frame Relay
- B. DWDM, SDH, ATM
- C. ATM, DWDM, Frame Relay
- D. SDH, X.25, ATM

**Answer: B**

**QUESTION NO: 7**

Click the Exhibit button to view the scenario.

How should OSPF be configured on Router B?



- A. routerospf 1  
 network 108.3.100.0 0.0.0.255 area 6  
 network 108.3.2.0 0.0.0.255 area 6
- B. routerospf 1  
 network 108.3.100.0 255.255.255.0 area 6  
 network 108.3.2.0 255.255.255.0 area 6
- C. routerospf  
 network 108.3.0.0
- D. routerospf 1  
 network 108.3.1.0 0.0.0.255 area 6  
 network 108.3.100.0 0.0.0.255 area 6  
 network 108.3.2.0 0.0.0.255 area 6
- E. routerospf 1  
 network 108.3.100.0 0.0.0.255 area 6  
 network 108.3.2.0 0.0.0.255 area 0

**Answer: A**

**QUESTION NO: 8**

An HTTP response code of 404 indicates:

- A. Bad request.
- B. Unauthorized.
- C. Object moved.
- D. The transaction is successful.
- E. Not found.

**Answer: E**

#### QUESTION NO: 9

How is Equal Cost Multipath Protocol configured on the CSS?

- A. ECMP command in a content rule
- B. VLAN1 IP ECMP command
- C. Global IP ECMP command
- D. ECMP command in the router service
- E. VLAN1 enable ECMP command

**Answer: C**

#### QUESTION NO: 10

In ACNS 5.X Content Delivery Network what is the purpose of defining a root Content Engine for a channel?

- A. None of the above
- B. This Content Engine downloads the content from the origin server and distributes the content to all the Content Engines that belong to the Channel.
- C. This Content Engine retrieves content from other Content Engines within the CDN.
- D. This Content Engine downloads the content from the Content Distribution Manager and distributes the content to all the Content Engines that belong to the Channel.
- E. This Content Engine is used by the administrator to manage the Content Delivery Network.

**Answer: B**

#### QUESTION NO: 11

To configure a CSS in box-to-box redundancy, the circuit VLAN that runs VRRP must have what command configured?

- A. redundancy-protocol
- B. circuit-redundant
- C. interface-redundant
- D. redundant-circuit
- E. redundancy-interface

**Answer: A**

#### QUESTION NO: 12

The configuration register does NOT retain settings for:

- A. An enabled 'Break' key
- B. The console baud rate
- C. An enabled AUX port
- D. The boot method

**Answer: C**

#### QUESTION NO: 13

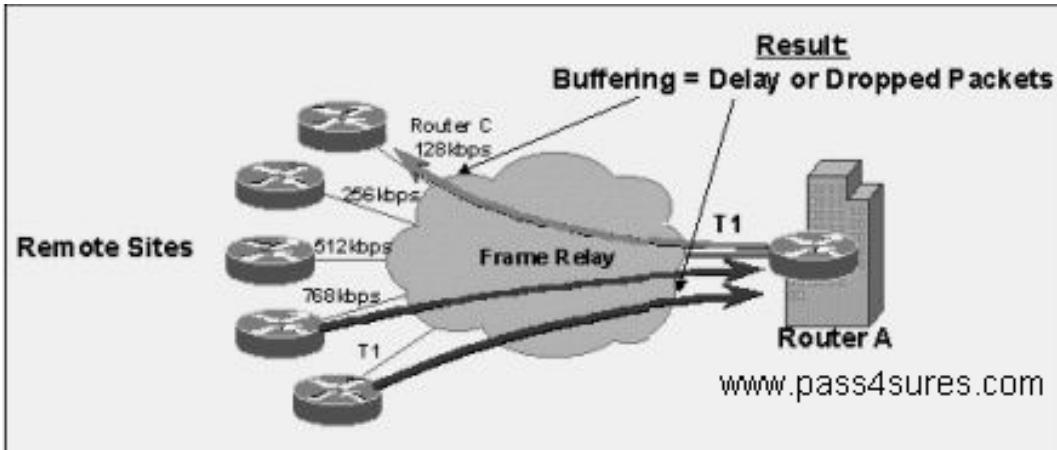
What is a possible way to avoid assymmetric traffic flow when using the CSM for server load balancing and the CSM's server side VLAN has an IP address configured on the MSFC?

- A. In the server farm use the clientnat command with a nat pool.
- B. Set the server's default gateway to the CSM's client side IP address.
- C. Use policy based routing to force traffic through the CSM's server side VLAN.
- D. Use policy based routing to force traffic through the CSM's client side VLAN.

**Answer: A,C**

#### QUESTION NO: 14

Click the Exhibit button to view the configuration. In the diagram shown, what mechanism needs to be employed on the remote site routers to aid congestion avoidance in the core, based on traffic priorities?

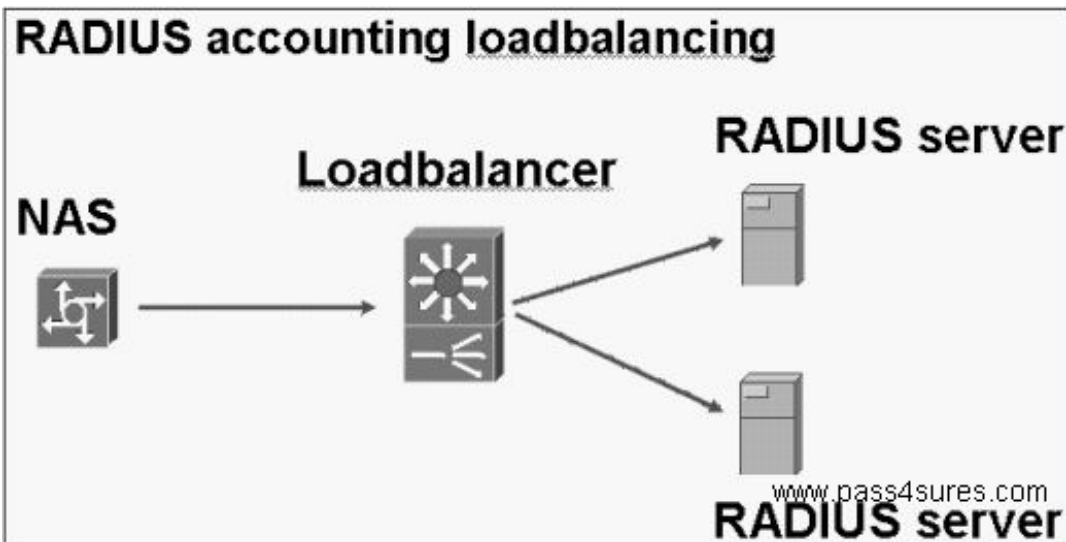


- A. Class Based Weighted Fair Queuing
- B. Weighted Random Early Detection
- C. IP Precedence Tagging
- D. Random Early Detection

**Answer: C**

#### QUESTION NO: 15

Click the Exhibit button. When loadbalancing RADIUS accounting information, the design needs to:



- A. Match the RADIUS Authenticator of Authorization and Accounting information
- B. Ensure the accounting data goes to the same server as the server that authenticated the user
- C. Incorporate a method to synchronize TACACS+ and RADIUS accounting information
- D. Incorporate a method to synchronise the accounting databases on the servers
- E. Ensure Start/Stop records of the same accounting session are sent to the same server

**Answer: D,E**

**QUESTION NO: 16**

How long is an ATM cell header?

- A. 3 octets (bytes)
- B. 8 octets (bytes)
- C. 5 octets (bytes)
- D. The size varies by AAL type used

**Answer: C**

**QUESTION NO: 17**

How long is an ATM cell header?

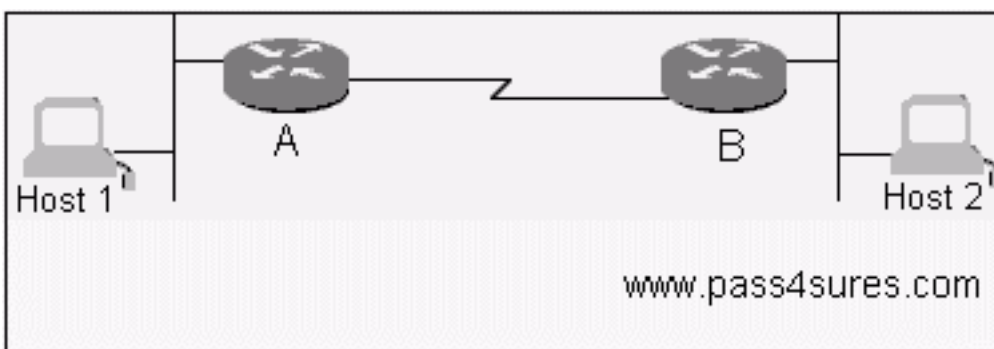
- A. The size varies by AAL type used
- B. 3 octets (bytes)
- C. 5 octets (bytes)
- D. 8 octets (bytes)

**Answer: C**

**QUESTION NO: 18**

Click the Exhibit button to view the topology.

Host 1 and Host 2 are on Ethernet LANs in different buildings. A serial line is installed between two Cisco routers using Cisco HDLC serial line encapsulation. Routers A and B are configured to route IP traffic. Host 1 sends a packet to Host 2. What is the destination MAC address of the packet on Host's 1 Ethernet?



- A. Router A
- B. The broadcast address
- C. Router B

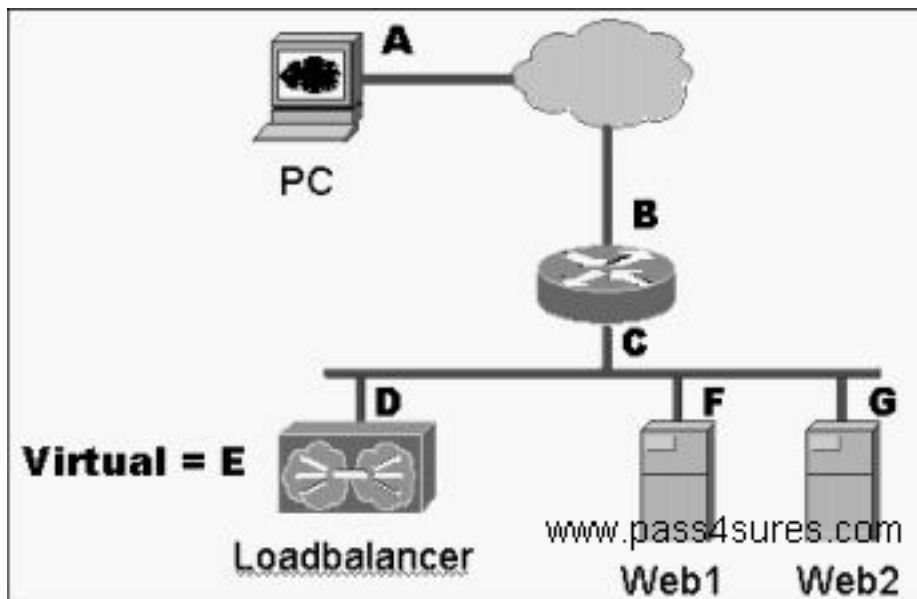


- D. Host 1
- E. Host 2

**Answer: A**

**QUESTION NO: 19**

Click the Exhibit button: In the shown diagram the browser fails to return a web page when browsing to www.foo.com. The IP addressing is represented by letters next to each device. The domain name www.foo.com resolves to IP address E. A sniffer trace is taken at the PC. What sequence of packets would be observed for this problem:

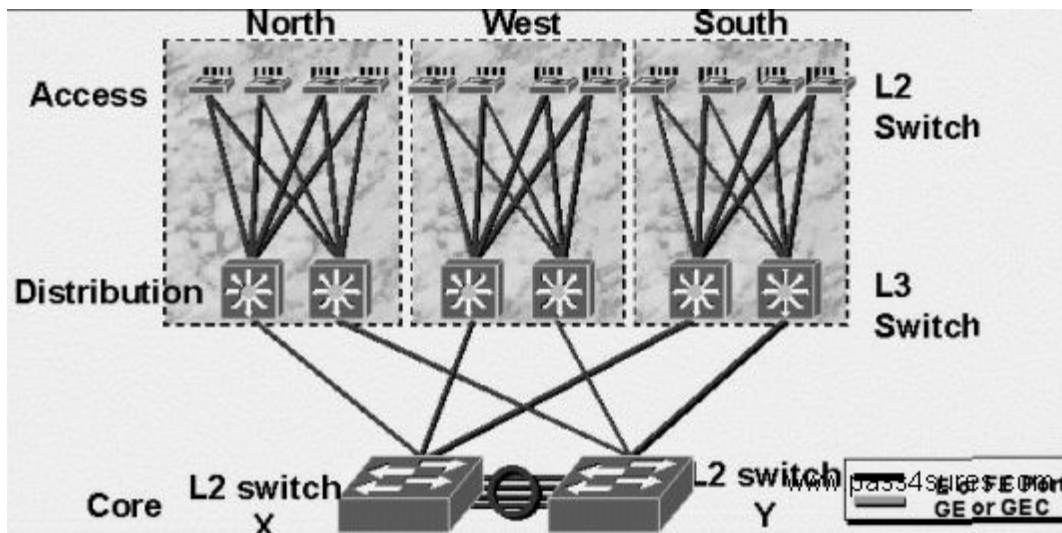


- A. A -> E SYN
- F -> A SYN-ACK
- A -> F RST
- B. A -> E FIN
- E -> A ACK
- E -> A FIN
- C. D -> G SYN
- G -> D SYN-ACK
- D -> G ACK
- D. C -> E SYN
- E -> C SYN-ACK
- C -> E ACK
- E. A -> D SYN
- D -> A RST

**Answer: A**

**QUESTION NO: 20**

Click the Exhibit button to view the topology. The diagram shows a campus with a L2 switched backbone. The backbone has a single VLAN (= subnet) with no loops. The links into the backbone are routed interfaces, not VLAN trunks. Switch X is the STP root of the core VLAN and switch Y is the standby root. The connection between X and Y is an EtherChannel. The network architect wants to add more redundancy by connecting the L3 switches in the distribution layer to both X and Y. What best describes that plan?



- A. It is a sound idea because it increases bandwidth and redundancy.
- B. It is a sound idea because packets take a single L2 hop across the backbone.
- C. It is impossible because routers cannot have two interfaces on the same subnet.
- D. It will cause loops that STP cannot resolve.
- E. It is not sound financially because the extra links will be blocking.

**Answer: C**

**QUESTION NO: 21**

What is the primary benefit of the "time-to-live" field in the IP header?

- A. To improve buffer utilization
- B. To remind us that all earthly joys are fleeting
- C. To allow calculation of round-trip delays
- D. To avoid delivery of packets that are no longer useful
- E. To reduce the impact of routing loops

**Answer: E**