

# Cisco

## Exam 350-080

### CCIE Data Center Written Exam

Version: 34.0

[ Total Questions: 473 ]

**Question No : 1**

Refer to the exhibit.

```
switch# show cfs application
```

Application	Enabled	Scope
ntp	Yes	Physical
fscm	Yes	Physical
role	No	Physical
radius	No	Physical
tacacs	Yes	Physical
fctimer	No	Physical
syslogd	No	Physical
callhome	No	Physical
device-alias	Yes	Physical
port-security	No	Logical

Which two statements are true? (Choose two.)

- A. TACACS shared-secret configuration entries are not propagated by Cisco Fabric Services.
- B. The role commit command is required to when making role configuration changes.
- C. RADIUS and TACACS cannot be enabled for Cisco Fabric services at the same time.
- D. The ntp commit command is required when making NTP configuration changes.
- E. The copy running-configuration startup-configuration fabric command saves the configuration only on MDS where it is entered.

**Answer: A,D**

**Question No : 2**

VLAN configuration using DCCM can be completed by which two supported methods? (Choose two.)

- A. Copy and paste the VLAN, along with its VLAN ID, name, type, admin state, and admin status, from one device to another.
- B. Create a single VLAN or a range of VLANs.
- C. A VLAN is created only after choosing File > Deploy to apply changes.
- D. After a VLAN is created, it requires the state to be enabled.
- E. Modify the existing VLAN by choosing Interface > VLAN > VLAN Settings.

**Answer: A,B**

**Question No : 3**

A Cisco switch has this configuration for a port channel connecting to an ESXi using dual NICs and is intended for use with an N1Kv.

```
Interface fastethernet 1/10
```

```
Switchport mode trunk
```

```
Switchport trunk allowed vlan all
```

```
Channel-group 10 mode on
```

```
No shut
```

```
Interface fastethernet 1/11
```

```
Switchport mode trunk
```

```
Switchport trunk allowed vlan all
```

```
Channel-group 10 mode on
```

```
No shut
```

```
Interface port-channel10
```

```
Switchport mode trunk
```

```
Switchport allowed vlan all
```

```
No shut
```

Which Port Channel configuration must be used on the Nexus 1000v port-profile?

- A. MAC pinning
- B. Cisco Discovery Protocol pinning
- C. Mode On
- D. Mode Active
- E. No port channel configuration

**Answer: C**

**Question No : 4**

What is the default Time to Live (TTL) value in Cisco FabricPath?

- A. 128
- B. 32
- C. 64
- D. Dependent on the number of switch IDs in the topology

**Answer: B**

**Question No : 5**

The network administrator is adding a new N1Kv to the vCenter, however, the administrator does not see the new switch under the networking tab of vCenter.

The administrator issues the following command on the VSM to troubleshoot:

```
VSM# show svcs connections
```

```
connection VC:
```

```
ip address: 10.10.10.30
```

```
remote port: 80
```

```
protocol: vmware-vim https
```

```
certificatE. default
```

```
datacenter namE. DC1
```

```
DVS uuid. 67 32 30 50 a6 d2 49 64-9e 1c 5f 49 e3 af 55 99
```

```
config status: Disabled
```

```
operational status: Disconnected
```

```
sync status: -
```

```
version: -
```

When attempting to fix the issue, the following error is seen:

```
VSM-PRI-188# conf
```

```
VSM-PRI-188(config)# svcs connection VC
```

```
VSM-PRI-188(config-svs-conn)# connect
```

```
ERROR: [VMWARE-VIM] Extension key was not registered before its use
```

What is the cause of the error?

- A. Missing control VLAN in VSM configuration
- B. Missing packet VLAN in VSM configuration
- C. VSM has no network connection to vCenter
- D. VSM extension key is not installed on vCenter
- E. vCenter extension key is not installed on VSM

**Answer: D**

### Question No : 6

Refer to the exhibit.

```
<snip>
Total version mismatch           : 0
Total Layer4 decisions           : 0
Total Layer4 rejections         : 0
Total Layer7 decisions          : 0
Total Layer7 rejections         : 0
Total Layer4 LB policy misses   : 0
Total Layer7 LB policy misses   : 0
Total times rserver was unavailable : 0
Total ACL denied                 : 0
Total IDMap Lookup Failures     : 0
<snip>
```

Which command would produce this output?

- A. show stats HTTP

- B. show stats load balance
- C. show stats probe type
- D. show parameter map

**Answer: B**

**Question No : 7**

Fault suppression allows you to suppress SNMP trap and Call Home notifications during a planned maintenance period. Which three commands are necessary to activate this suppression policies in Cisco UCS Manager? (Choose three.)

- A. default-chassis-all-maint
- B. default-chassis-phys-maint
- C. default-fex-all-maint
- D. default-FI-phys-maint
- E. default-blade-phys-maint
- F. default-vic-phys-maint

**Answer: A,B,C**

**Question No : 8**

Which two statements about Fibre Channel over IP are true? (Choose two.)

- A. FCIP links consist of a maximum of one TCP connection between two FCIP link endpoints.
- B. Each FCIP link carries encapsulated FCoE frames.
- C. The FCIP link is established between two peers, and the VE Port initialization behavior is identical to a normal E Port.
- D. The FCIP profile contains information about the local IP address and TCP parameters.
- E. The local IP address of the FCIP profile is the IP address of the management interface of the Cisco MDS switch.

**Answer: C,D**

**Question No : 9**

Which statement best describes the Cisco Nexus 1000V Series?

- A. The Cisco Nexus 1000V Series provides Layer 2 switching, advanced networking functions, and a common network management model in a virtualized server environment.
- B. The Cisco Nexus 1000V Series provides Layer 3 switching, advanced networking functions, and a common network management model in a virtualized server environment.
- C. The Cisco Nexus 1000V Series provides Layer 2 and Layer 3 switching, advanced networking functions, and a common network management model in a virtualized server environment.
- D. The Cisco Nexus 1000V Series provides Layer 2 and Layer 3 switching but does not provide advanced networking functions or a common network management model in a virtualized server environment.

**Answer: A**

**Question No : 10**

Refer to the exhibit.

```
nexus5000-sanA# configure terminal
nexus5000-sanA(config) # fex 101
nexus5000-sanA(config-fex) # fcoe
nexus5000-sanA(config-fex) # interface vfc 1
nexus5000-sanA(config-if) # bind interface ethernet 101/1/1
nexus5000-sanA(config-if) #no shutdown
```

Which option describes the capability that the FCoE setting allows?

- A. configures the FEX to send FCoE traffic only to this switch
- B. allows mapped VLAN-VSAN traffic to reach the FEX
- C. configures FEX for A-B SAN capabilities
- D. allows interface Ethernet 101/1/1 to exchange DCBX information

**Answer: A**

**Question No : 11**

Which statement about SAN port channels configured on Cisco Nexus 5000 Series Switches is true?

- A. A single SAN port channel can have both Fibre Channel and virtual Fibre Channel interfaces.
- B. SAN port channels can include up to 16 interfaces.
- C. SAN port channels distribute traffic across all links in the port channel when source ID and destination ID load balancing are used.
- D. The links in SAN port channels can be connected to different sets of switches.
- E. The On mode of operation means ports only operate as part of a SAN port channel or remain inactive.

**Answer: E**

**Question No : 12**

In a Cisco Unified Computing System, What is the "designated receiver" port in end-host mode used for?

- A. Sending all broadcasts
- B. Receiving all traffic from upstream switches
- C. Receiving broadcast traffic
- D. Negotiating spanning tree with upstream switches
- E. Learning MAC addresses from upstream switches

**Answer: C**

**Question No : 13**

DHCP snooping on Cisco Nexus 1000V Series Switches acts like a firewall between untrusted hosts and trusted DHCP servers by doing which of these? (Choose three.)

- A. validates DHCP messages received from untrusted sources and filters out invalid response messages from DHCP servers
- B. intercepts all ARP requests and responses on untrusted ports
- C. builds and maintains the DHCP snooping binding database, which contains information about untrusted hosts with leased IP addresses
- D. uses the DHCP snooping binding database to validate subsequent requests from untrusted hosts
- E. limits IP traffic on an interface to only those sources that have an IP-MAC address binding table entry or static IP source entry

**Answer: A,C,D**



**Question No : 14**

Which statement about NPIV is true?

- A. NPIV provides a means to assign multiple Fibre Channel IDs to a single N-port.
- B. NPIV can be enabled on a per-VSAN basis.
- C. NPIV requires a "write erase" and then reload the switch in order to come up into NPIV mode.
- D. NPIV is a Cisco proprietary feature and as such works only between two Cisco switches.
- E. NPIV must not be enabled on a switch that is also running N-port virtualization.

**Answer: A**

**Question No : 15 DRAG DROP**

Given a Cisco UCS deployment and RBAC hierarchy, match the terms on the left with the descriptions on the right.

organization	logical object created to manage organizations
role	logical domain that contains managed objects
user	a job function within the context of a locale
locale	can be assigned to one or more roles
privileges	granted or denied to perform certain actions

**Answer:**

Given a Cisco UCS deployment and RBAC hierarchy, match the terms on the left with the descriptions on the right.

organization	role
role	user
user	organization
locale	privileges
privileges	locale

**Question No : 16**

Which option is the advantage of Cisco ACE SSL Offload?

- A. Export cipher suite
- B. Decentralized certificate management
- C. SSL encryption only
- D. Front-end SSL

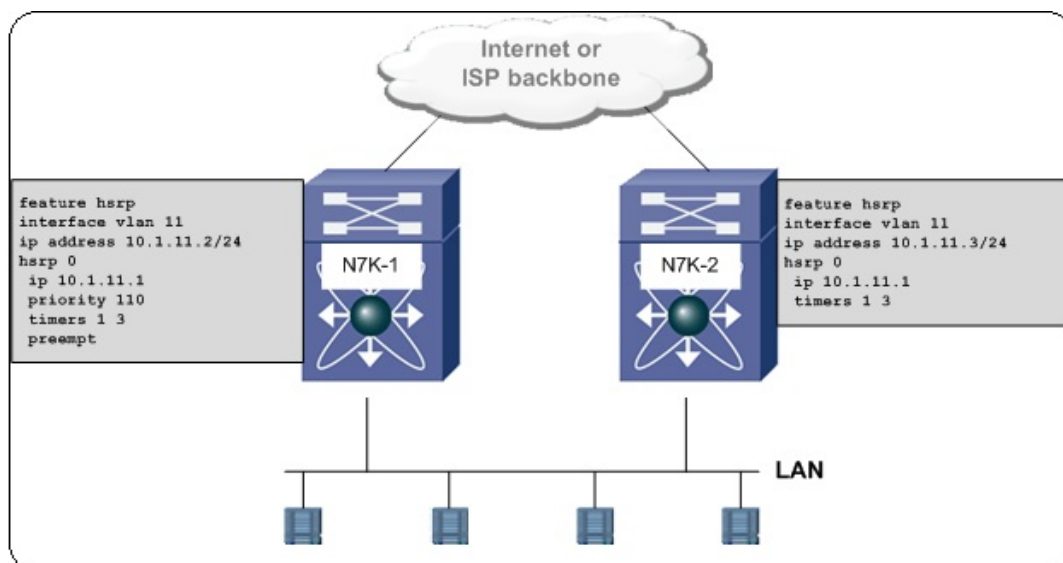
**Answer: D**

**Explanation:**

Ref: SSL Guide vA5(1.0)

**Question No : 17**

Refer to the exhibit.



The network administrator is seeing N7K-1 having issues with VLAN 11, and interface VLAN 11 is resetting, causing frequent HSRP state changes. Which two actions would reduce HSRP state changes? (Choose two.)

- A. On N7K-1, configure the HSRP extended hold timer to 180, extending the HSRP hello message hold time.
- B. On N7K-2, configure the HSRP extended hold timer to 180, extending the HSRP hello message hold time.
- C. On N7K-1, configure the pre-empt delay minimum to 180 in order to delay N7K-1 from