

# Cisco

## Exam 600-601

### Managing Industrial Networks with Cisco Networking Technologies

Version: 6.0

[ Total Questions: 64 ]

**Question No : 1**

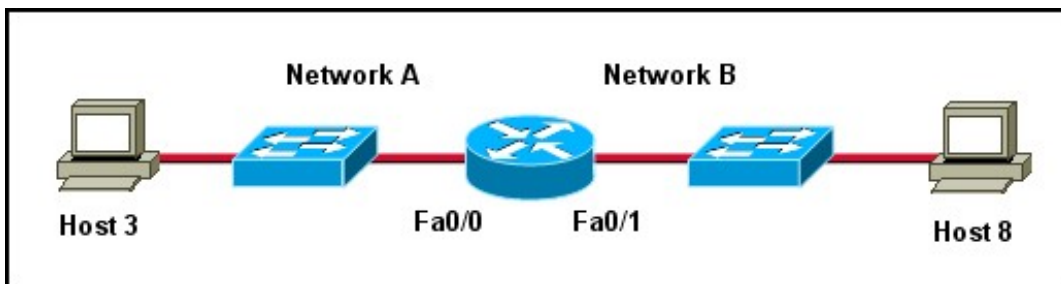
A small manufacturing company has a Class C network address on the plant floor and needs to create five subnets, each accommodating 25 endpoints. Which subnet mask needs to be configured?

- A. 255.255.240.0
- B. 255.255.255.128
- C. 255.255.255.192
- D. 255.255.255.224
- E. 255.255.255.240
- F. 255.255.255.248

**Answer: D**

**Question No : 2**

Refer to the exhibit.



Host 3 on Network A is sending data to Host 8 on Network B. Which address is the default gateway of Host 3?

- A. the address of the switch interface that is connected to router interface Fa0/0
- B. the address of the switch interface that is connected to router interface Fa0/1
- C. the address of the host that is connected to Network A
- D. the address of the host that is connected to Network B
- E. the address of the router interface Fa0/0
- F. the address of the router interface Fa0/1

**Answer: E**

**Question No : 3**

Which of the following correctly pairs the dotted decimal subnet mask with the correct number of binary bits that represent the subnet mask?

- A. 255.255.255.192 and /25
- B. 255.255.255.248 and /28
- C. 255.255.255.224 and /26
- D. 255.255.255.248 and /27
- E. 255.255.255.240 and /28
- F. 255.255.255.240 and /16

**Answer: E**

**Question No : 4**

Refer to the exhibit.

```
interface FastEthernet1/1          !
switchport access vlan 102        interface Vlan101
!                                   ip address 192.168.1.1 255.255.255.0
interface FastEthernet1/2          cdp enable
switchport access vlan 104        !
!                                   interface Vlan102
interface FastEthernet1/3          ip address 192.168.2.1 255.255.255.0
switchport access vlan 103        cdp enable
!                                   !
interface FastEthernet1/4          interface Vlan103
switchport access vlan 101        ip address 192.168.3.1 255.255.255.128
!                                   cdp enable
interface FastEthernet1/5          !
switchport trunk native vlan 103  interface Vlan104
switchport mode trunk            ip address 192.168.3.129 255.255.255.128
!                                   cdp enable
interface Vlan1                   !
no ip address                     ip classless
```

Which port should a PLC with IP address 192.168.3.65 be plugged into in order to communicate to the rest of the network?

- A. FastEthernet1/1
- B. FastEthernet1/2
- C. FastEthernet1/3
- D. FastEthernet1/4
- E. FastEthernet1/5

**Answer: C**

#### Question No : 5

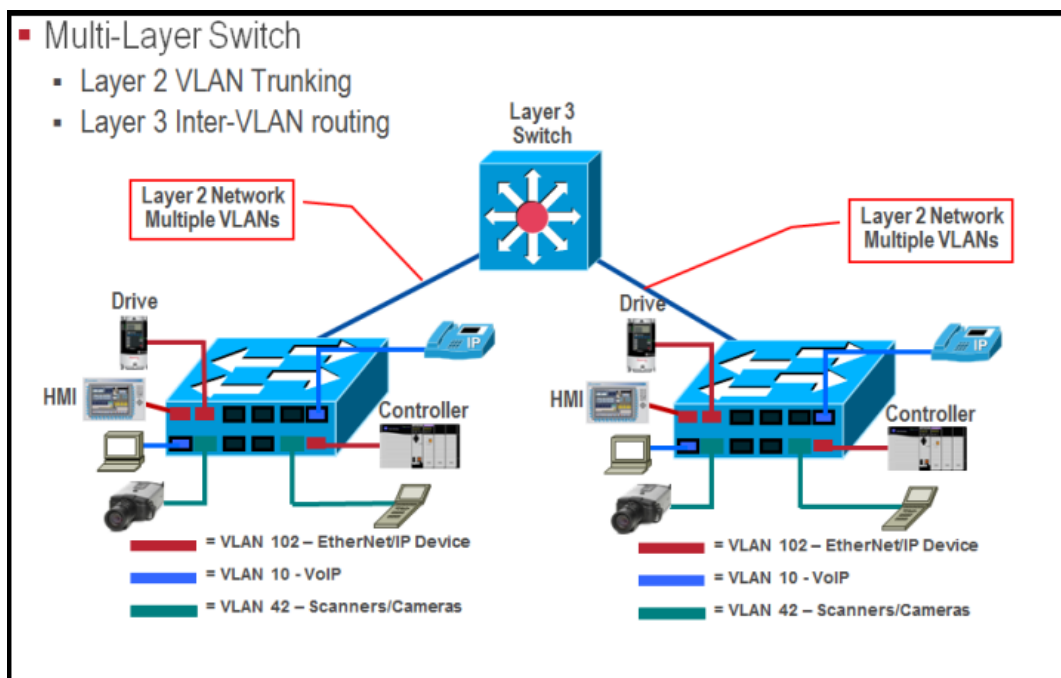
Which option allows an EtherNet/IP I/O device to be safely installed where it is subject to water immersion?

- A. The device is rated IP20 and the power wiring is installed securely to the terminal block.
- B. The device is rated IP67 and a power cordset is used.
- C. The device is rated IP67 and immersed to 10 m.
- D. The device is rated IP20 and immersed to 10 m.

Answer: B

**Question No : 6**

Refer to the exhibit.



What are three traffic and interconnection requirements for the devices in the exhibit? (Choose three.)

- A. The EtherNet/IP drive connections are in a high-voltage area and need protection from electromagnetic noise, so shielded cable that is rated for 600 V is advised.
- B. EtherNet/IP devices such as the controller, drive, VoIP phone, and IP camera should be in the same VLAN.
- C. CIP traffic has the highest bandwidth requirement so it needs the highest QoS setting.
- D. EtherNet/IP drive traffic has high sensitivity to random drops, latency, and jitter.
- E. Real-time motion control and VoIP traffic can share the same VLAN with the proper QoS setting.
- F. IEEE1588 and PTP are important for ensuring real-time synchronization.