

**Cisco 640-863**

**640-863 Designing for Cisco Internetwork Solutions**

**Practice Test**

Version 3.2

**QUESTION NO: 1**

A Cisco Self-Defending Network has been installed, but DoS attacks are still being directed at e-commerce hosts. The connection rate at the Internet firewall was limited, but the problem persists. What more can be done?

- A. Move the servers to the DMZ.
- B. Install all relevant operating system patches.
- C. Block the servers' TCP traffic at the Internet firewall.
- D. Block the servers' UDP traffic at the Internet firewall.

**Answer: B**

**QUESTION NO: 2**

RST Corporation is planning to upgrade its current network. The chief technology officer has supplied a topology diagram and an IP addressing scheme of the current network during an interview.

RST has been growing at about twenty percent per year. It has been difficult to maintain customer support at a satisfactory level. Therefore, the RST board has met with and directed the chief technology officer to look into network improvements.

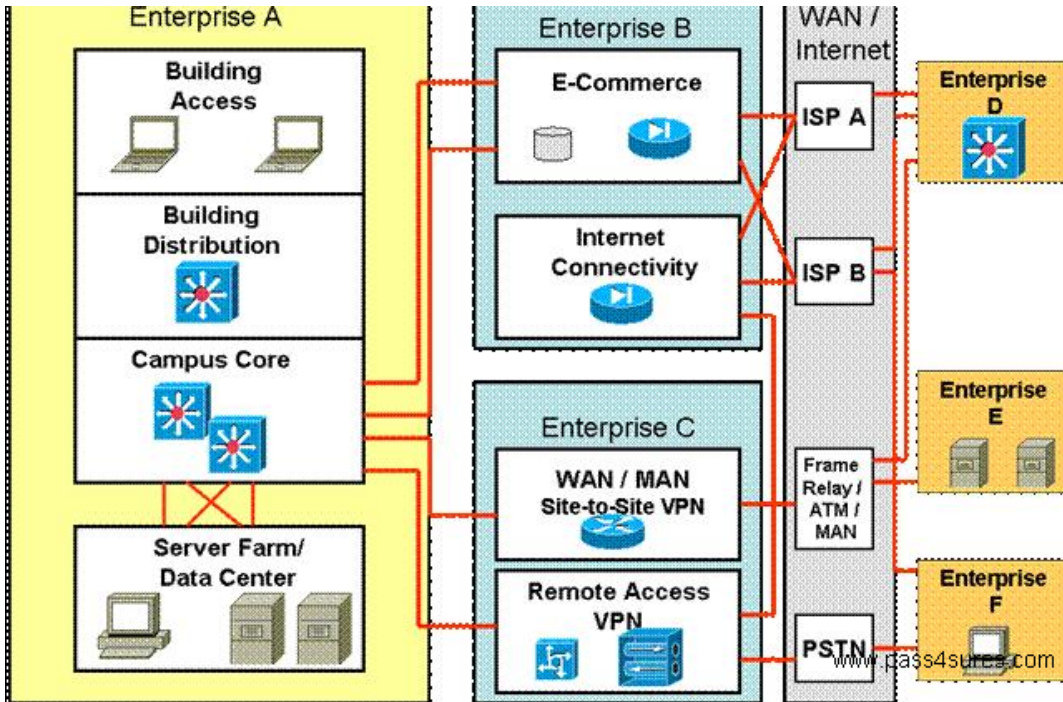
Which two items are most relevant in documenting RST's business requirements? (Choose two.)

- A. existing network topologies
- B. network performance requirements
- C. the IP addresses assigned by the ISP
- D. improved customer support requirements
- E. projected growth estimates

**Answer: D,E**

**QUESTION NO: 3**

Refer to the exhibit. Which module is the Enterprise WAN module?



- A. Enterprise A
- B. Enterprise B
- C. Enterprise F
- D. Enterprise C
- E. Enterprise D
- F. Enterprise E

**Answer: D**

#### QUESTION NO: 4

Which two of these best describe the implementation of a WAN Backup design over the Internet? (Choose two.)

- A. a best-effort method
- B. bandwidth guaranteed based on interface configuration
- C. designed as an alternative to a failed WAN connection
- D. implemented with a point-to-point logical link using a Layer 2 tunnel
- E. requires no ISP coordination or involvement

**Answer: A,C**

#### QUESTION NO: 5

Which two design criteria require VLANs in a proposed solution? (Choose two.)

- A. the segmenting of collision domains
- B. a limited corporate budget
- C. the use of multivendor equipment
- D. security between departments
- E. video streaming on the LAN
- F. the segmenting of broadcast domains

**Answer: D,F**

#### QUESTION NO: 6

Which two methods are used to enhance VPN performance on Cisco ISRs? (Choose two.)

- A. SSL Acceleration Network Module
- B. VPN Shared Port Adapter
- C. VPN Acceleration Module
- D. high-performance VPN encryption AIM
- E. VPN Service Adapter
- F. built-in hardware-based encryption acceleration

**Answer: D,F**

#### QUESTION NO: 7

Which three factors best justify WAN link redundancy between geographically dispersed sites? (Choose three.)

- A. high expense of transmitting data
- B. important traffic flows
- C. excessive packet transmission rate
- D. uncertain reliability
- E. high link utilization
- F. lack of speed

**Answer: B,D,F**

#### QUESTION NO: 8

Which three pieces of information should be documented for each step of each phase in a design implementation plan? (Choose three.)

- A. easy guidelines in case of failure
- B. estimated rollback time in case of failure
- C. simple implementation guidelines
- D. estimated implementation time
- E. design document references
- F. step description

**Answer: D,E,F**

#### QUESTION NO: 9

The topology map in the draft design document should cover which two layers of the OSI model? (Choose two.)

- A. session
- B. data link
- C. transport
- D. application
- E. physical
- F. network

**Answer: E,F**

#### QUESTION NO: 10

In a Cisco CatOS switch, what is the recommended practice when configuring switch-to-switch intercommunications to carry multiple VLANs for Dynamic Trunk Protocol?

- A. auto toauto\_negotiate
- B. disable Dynamic Trunk Protocol when operating in the distribution layer
- C. auto toauto\_no\_negotiate
- D. desirable todesirable\_no\_negotiate
- E. on toon\_negotiate
- F. desirable todesirable\_negotiate

**Answer: F**

#### QUESTION NO: 11

What are the two most likely driving forces motivating businesses to integrate voice and data into converged networks? (Choose two.)

- A. Voice networks cannot carry data unless the PRI circuits aggregate the BRI circuits.
- B. Their PSTNs cannot deploy features quickly enough.
- C. Data, voice, and video cannot converge on their current PSTN structures.
- D. Voice has become the primary traffic on networks.
- E. WAN costs can be reduced by migrating to converged networks.

**Answer: A,C**

#### QUESTION NO: 12

Your company's Cisco routers are operating with EIGRP. You need to join networks with an acquisition's heterogeneous routers at 3 sites, operating with EIGRP and OSPF. Which describes the best practice for routing protocol deployment?

- A. apply two-way redistribution exclusively at each location
- B. apply one-way redistribution exclusively at each location
- C. apply two-way redistribution at each location with a route filter at each location
- D. apply OSPF throughout both networks
- E. apply two-way redistribution at each location with a route filter at only one location
- F. apply EIGRP with the same autonomous system throughout both networks

**Answer: C**

#### QUESTION NO: 13

A lightweight access point is added to a working network. Which sequence will it use to associate itself with a wireless LAN controller?

- A. primary, secondary, tertiary, greatest AP capacity, master
- B. primary, secondary, tertiary, master, greatest AP capacity
- C. master, primary, secondary, tertiary, greatest AP capacity
- D. greatest AP capacity, primary, secondary, tertiary, master

**Answer: B**

#### QUESTION NO: 14

Which three mechanisms are required to deploy QoS on an IP WAN? (Choose three.)

- A. queuing and scheduling
- B. Call Admission Control

- C. traffic shaping
- D. link efficiency techniques
- E. traffic classification
- F. bandwidth provisioning

**Answer: B,C,D**

### QUESTION NO: 15

Which two statements best describe the implementation of Overlay VPN connectivity for remote access in the Enterprise Edge WAN module? (Choose two.)

- A. Bandwidth is provisioned on a site-to-site basis.
- B. It uses dedicated point-to-point links.
- C. Optimum routing between customer sites requires a full mesh of virtual circuits.
- D. It must use Layer 2 labels to forward packets
- E. The ISP actively participates in customer routing.

**Answer: A,C**

### QUESTION NO: 16 DRAG DROP

Drop

Click and drag the QoS feature type on the left to the category of QoS mechanism on the right.

WRED	classification and marking
CAR	congestion avoidance
ACLs	traffic conditioners
LFI	congestion management
LLQ	link efficiency

www.pass4sures.com

**Answer:**

Click and drag the QoS feature type on the left to the category of QoS mechanism on the right.

WRED	ACLs
CAR	WRED
ACLs	CAR
LFI	LLQ
LLQ	LFI

www.pass4sures.com

**QUESTION NO: 17**

A manufacturing company has decided to add a website to enhance sales. The web servers in the E-Commerce module must be accessible without compromising network security. Which two design recommendations can be made to meet these requirements? (Choose two.)

- A. Move the E-Commerce servers to the WAN module.
- B. Use intrusion detection on the E-Commerce server farm.
- C. Limit the number of incoming connections to the E-Commerce module.
- D. Use private and public key encryption.
- E. Place E-Commerce servers and application servers on isolated LANs (DMZs).

**Answer: B,E**

**QUESTION NO: 18**

After a period of rapid growth, FloCzar Boats is seeking better network management tools. Managers have developed this needs list:

- Move from static to dynamic device information.
- Gain information to assist in long-term trend analysis.
- Concentrate on Layer 4 monitoring.

Which management protocol will most help FloCzar achieve its goals?

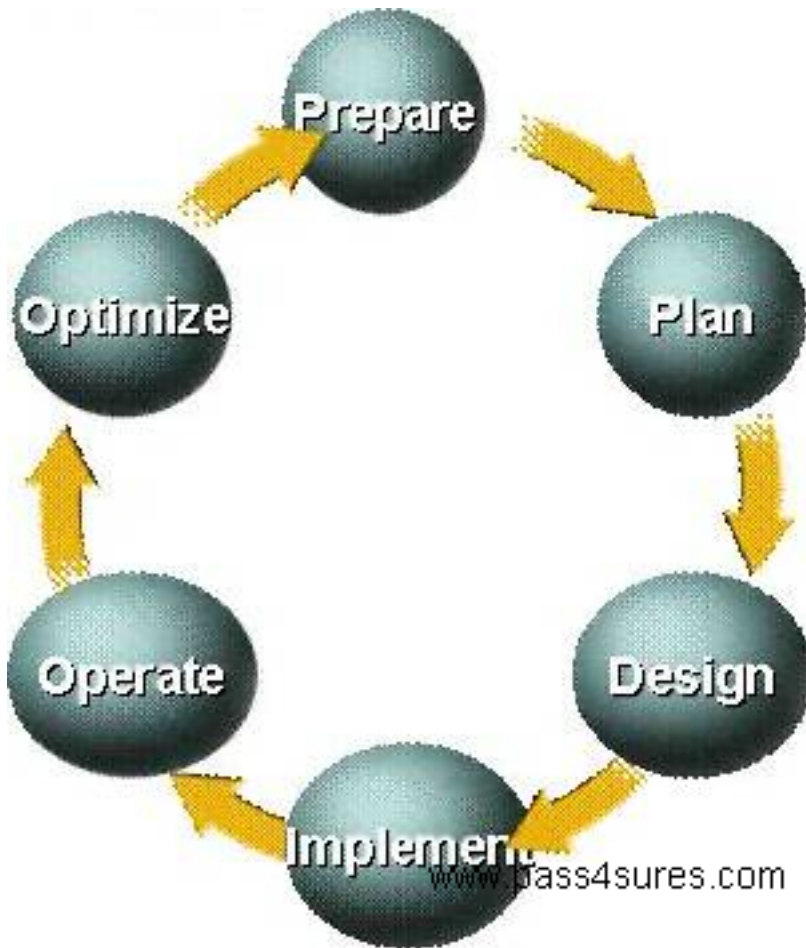
- A. RMON2
- B. SNMP
- C. NetFlow
- D. RMON
- E. Cisco Discovery Protocol

**Answer: A**

**QUESTION NO: 19**

At which stage in the PPDIOO process would you analyze a customer's network in order to discover opportunities for network improvement?





- A. Operate
- B. Implement
- C. Plan
- D. Design
- E. Prepare
- F. Design Assessment

**Answer: D**

#### QUESTION NO: 20

A very large organization has received its IPv6 address range from its Internet Service Provider and intends to use only IPv6 addresses internally. Employees will access the Internet using port address translation. What is a requirement for their DNS servers?

- A. There are no changes required to their DNS servers.
- B. Their DNS servers need to support only IPv6 addresses.
- C. Their DNS servers need to support only IPv4 addresses.
- D. They need additional DNS servers in their network just for IPv6 addresses.
- E. They no longer need DNS servers.
- F. Their DNS servers need to support both IPv4 and IPv6 addresses.

**Answer: F**

**QUESTION NO: 21**

Which two statements represent advantages that the top-down network design process has over the bottom-up network design process? (Choose two.)

- A. utilizes previous experience
- B. identifies appropriate technologies first
- C. is able to provide the big picture
- D. takes less time to design a network
- E. provides a design for current and future development

**Answer: C,E**

**QUESTION NO: 22**

Which two statements about IPv6 addresses are true? (Choose two.)

- A. Two colons (::) are used to represent successive hexadecimal fields of zeros.
- B. Leading zeros are required.
- C. Two colons (::) are used to separate fields.
- D. A single interface will have multiple IPv6 addresses of different types.

**Answer: A,D**

**QUESTION NO: 23**

Which three security measures can be used to mitigate DoS attacks that are directed at exposed hosts within the E-Commerce module? (Choose three.)

- A. Use NIDSs and HIPSs to detect signs of attack and to identify potentially successful breaches.
- B. Partition the exposed hosts into a separate LAN or VLAN.
- C. Use LAN switch VTP pruning to separate hosts on the same segment.
- D. Use a VPN concentrator (IPSec) to protect and verify each connection to the exposed host or hosts.
- E. Use firewalls to block all unnecessary connections to the exposed hosts.

**Answer: A,B,E**