

Cisco

Exam 642-035

Troubleshooting Cisco Unified Computing

Version: 8.0

[Total Questions: 167]

Question No : 1

You must check the path that vNICs uses to communicate. How can you verify whether a vNIC on a Cisco UCS server is in an active state or a failover state?

- A. Run the show interface brief command.
- B. Connect to the adapter and execute the Master Control Program.
- C. Compare the state on both fabric interconnects.
- D. Run the show interface status command.

Answer: C

Question No : 2

Which CLI command will indicate whether a Cisco UCS C-Series rack-mount server has any failed DIMMs?

- A. ucs-c250 / # scope chassis
ucs-c250 /chassis # show dimm-summary
- B. ucs-c250 / # scope chassis
ucs-c250 /chassis # show dimm-fault
- C. ucs-c250 / # scope chassis
ucs-c250 /chassis # show dimm-ecc
- D. ucs-c250 / # scope chassis
ucs-c250 /chassis # show dimm-recovery

Answer: A

Question No : 3

How many FSM tasks can run concurrently on a server?

- A. 1
- B. 2
- C. 4
- D. 16

Answer: A

Question No : 4

You are troubleshooting a remote Cisco UCS environment that has Cisco UCS 2208 I/O Modules. Some of the links from the IOMs to the UCS Fabric Interconnect fail to work as expected. You check whether the SFP is in place and the state of the IOM ports. Which command do you use to view the MAC and PHY status to determine whether the SFP is detected in the IOM?

- A. show platform software redwood oper
- B. show platform software woodsideoper
- C. show platform software woodsidests
- D. show platform software redwood post

Answer: B

Question No : 5

Looking at the Equipment > Chassis > Servers > Server X view from the Cisco UCS Manager GUI, which tab would you select to identify the fabric interconnect uplink associated with a given virtual circuit?

- A. Paths
- B. vNIC Paths
- C. Virtual Circuit Paths
- D. VIF Paths

Answer: D

Question No : 6

You successfully install VMware ESXi 5.0 U1 on a Cisco UCS B200 M3 server to a Fibre Channel LUN. When you reboot the server, you see the message "Reboot and Select Proper Boot device or insert Boot Media in selected Boot device and press a key." What are the first two pieces of information you should gather to troubleshoot the boot failure? (Choose two.)

- A. Connect to the NX-OS shell via the CLI and run the show npv flogi-table command.
- B. SSH to the MDS 9124 and run the show flogi database command.

- C. Validate the boot target WWPN and LUN ID in the service profile.
- D. Validate the correct source WWPN in the service profile vHBA definition.
- E. Validate zoning for your WWPN on the Cisco MDS 9124.
- F. Validate that the boot order indicates the vHBA as the first device.
- G. Ensure LUN masking is correctly configured on the storage controller.

Answer: C,F

Question No : 7

A Cisco UCS chassis has two ports on I/O Module 1 connected to Fabric Interconnect A, and two ports on I/O Module 2 connected to Fabric Interconnect B. The I/O modules are connected to ports 1 and 2 on their respective fabric interconnects, and end host mode is configured. After a link failure occurs on port 1 of I/O Module 1, what happens to the traffic that was pinned to that link?

- A. The traffic fails until the link issue is resolved.
- B. The traffic is repinned to I/O Module 2 link 1, which is connected to Fabric Interconnect B.
- C. The traffic is repinned to the remaining link between I/O Module 1 and Fabric Interconnect A.
- D. The traffic is repinned automatically to Fabric Interconnect B.

Answer: C

Question No : 8

Which three statements explain why a Cisco UCS server cannot boot via SAN? (Choose three.)

- A. The correct VLAN must be configured.
- B. The correct WWPN must be specified in the service profile.
- C. The server must be able to ping the target.
- D. The correct boot order must be specified in the service profile.
- E. The boot LUN number must specify the appropriate operating system.

Answer: B,D,E

Question No : 9

When a service profile is disassociated from a server, what happens to the identity and connectivity information for the server?

- A. It is cleared and set to the default that was setup initially by the first configuration.
- B. It is maintained and can be reused.
- C. It is reset to factory defaults.
- D. It uses master service profile parameters.
- E. It takes parameters of other servers in the service profile.

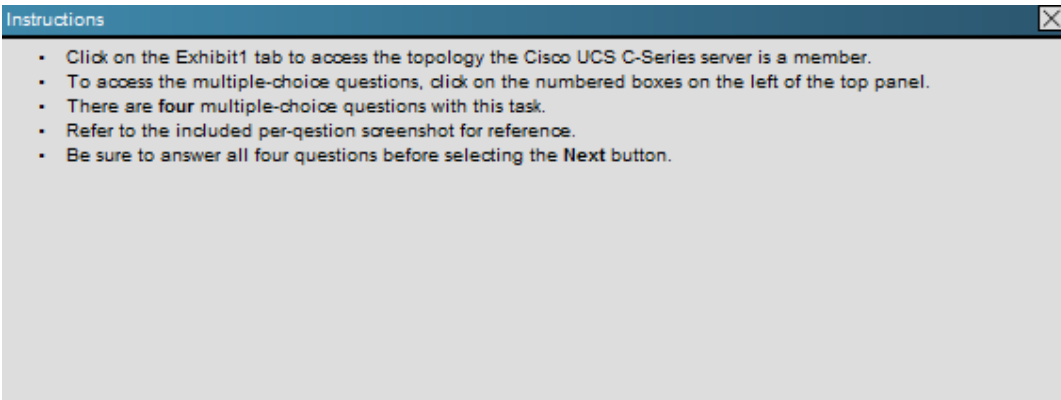
Answer: C

Question No : 10

Which option is a valid file extension for a CIMC configuration file?

- A. .xml
- B. .json
- C. .txt
- D. .exe
- E. .zip

Answer: A

Question No : 11

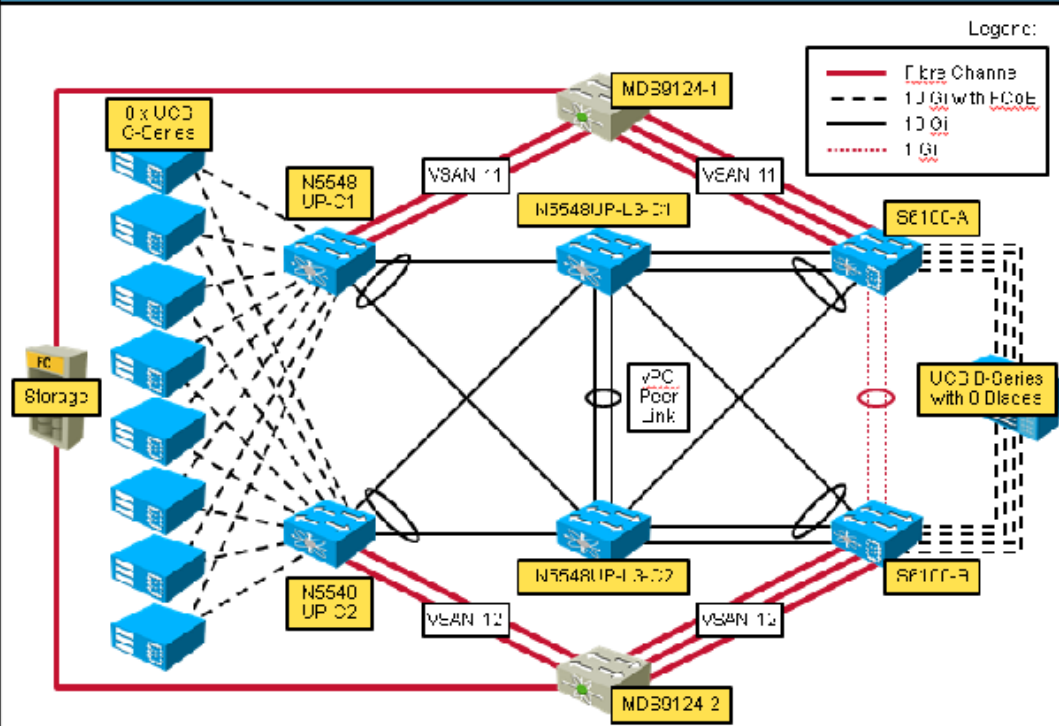
Instructions

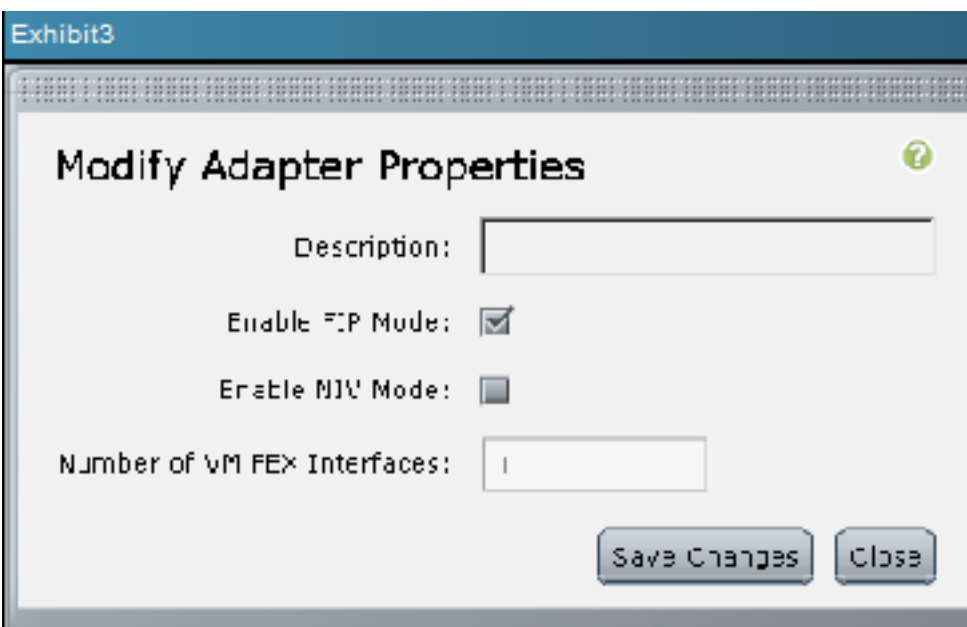
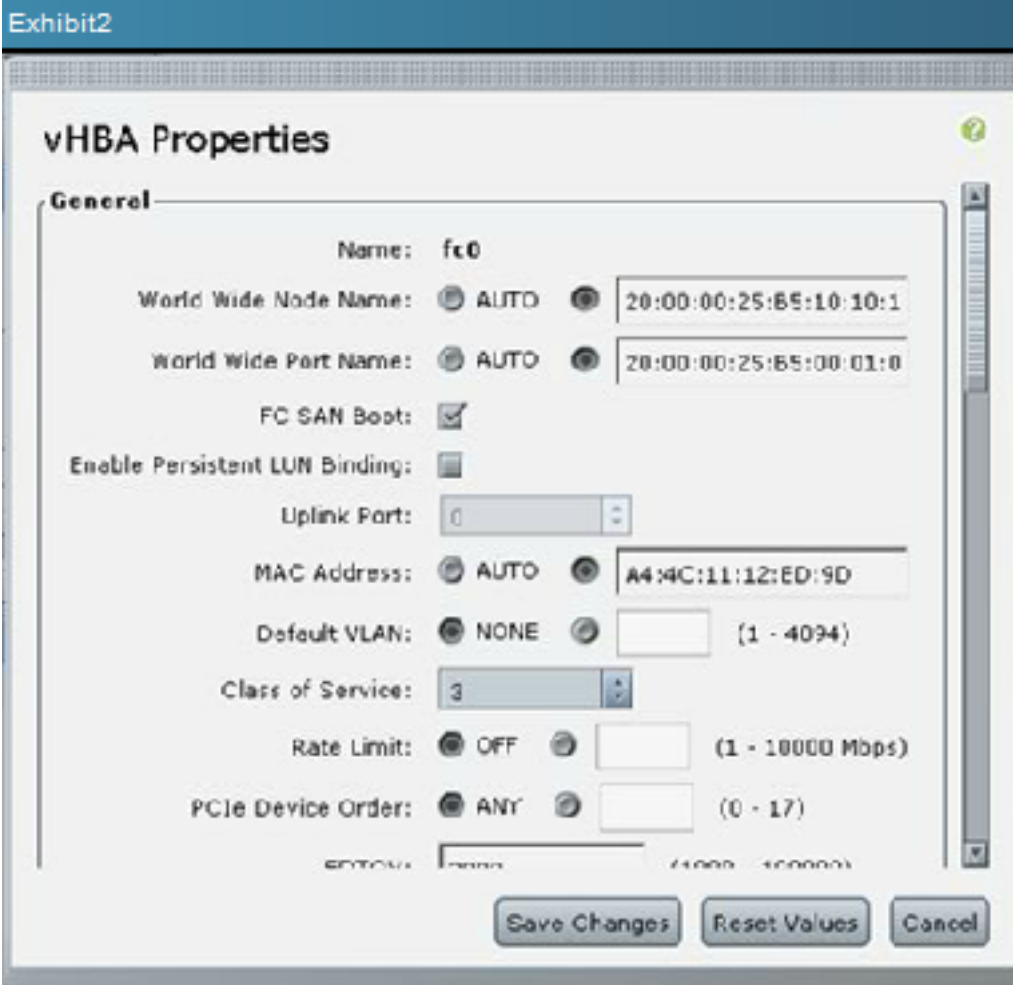
- Click on the Exhibit1 tab to access the topology the Cisco UCS C-Series server is a member.
- To access the multiple-choice questions, click on the numbered boxes on the left of the top panel.
- There are four multiple-choice questions with this task.
- Refer to the included per-question screenshot for reference.
- Be sure to answer all four questions before selecting the Next button.

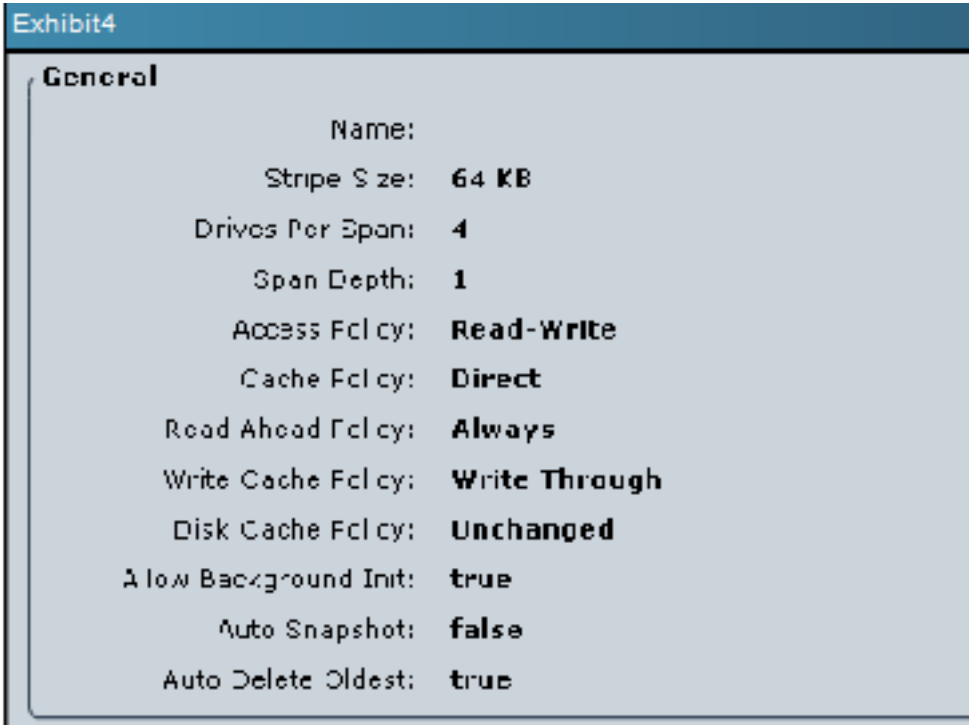
Scenario

In this scenario, you will answer questions about Cisco UCS C-Series server configuration based on screenshots from the Cisco IMC GUI.

Exhibit1







Refer to Exhibit 5. Which of the following is true regarding password recovery for the Cisco IMC GUI interface?

- A. From the KVM Console, press F12 during POST to reset the credentials to admin/password
- B. Type RECOVER into the Username field, and then type SYSTEM in the Password field to enter recovery mode
- C. Refer to the model-specific Cisco UCS C-Series Hardware guide to learn the location of the recovery jumper on the server motherboard
- D. Enter the Cisco IMC BIOS to reset the GUI password

Answer: D

Question No : 12

In a Cisco UCS environment, what are the three power types in a power policy? (Choose three.)

- A. backup
- B. grid
- C. redund
- D. n-plus-1
- E. non-redund
- F. plus-1

Answer: B,D,E

Question No : 13

Refer to the exhibit. A server has a service profile that is configured to boot over iSCSI. During boot, this message is displayed. What is the cause of this message?

```
EFI Shell version 2.31 [4.654]
Current running mode 1.1.2
Device mapping table
  blk0 :Removable BlockDevice - Alias (null)
        PciRoot(0x0)/Pci(0x1,0x0)/Pci(0x0,0x0)/Ctrl(0x0)/Scsi(0x0,0x0)

Press ESC in 1 seconds to skip startup.nsh, any other key to continue.
Shell> _
```

- A. The local disk is not present.
- B. RAID 0 is not configured on the local disk.
- C. The remote disk is powered off.
- D. The server has not configured the pWWN properly in the boot policy.

Answer: C

Question No : 14

What task is required before adding traffic sources to a monitoring session?

- A. create a traffic monitoring session
- B. choose a source component
- C. activate the session
- D. delete any earlier data collection

Answer: A

Question No : 15

Which description of a core file is true?

- A. It is generated by a system failure.
- B. It is generated by a process failure.
- C. It is generated by a component failure.
- D. It is generated by a hardware failure.

Answer: B

Question No : 16

How can you set a Cisco UCS C-Series Server to export tech-support data for TAC to an external file server?

- A. CIMC to a TFTP server
- B. CIMC to an RCP server
- C. FSM to a TFTP server
- D. FSM to an RCP server

Answer: A

Question No : 17

Which feature on the Cisco IMC GUI allows you to view the last boot post operation?