

642-785

642-785

**Maintaining Cisco Service Provider
Quality of Service**

Version 13.20

642-785

QUESTION NO: 1

Which of these correctly describes traffic classification using qos group?

- A. qos-group marking is automatically mapped to MPLS EXP marking.
- B. qos-group is only applicable to an MPLS-enabled router.
- C. qos-group marking value ranges from 0 to 7.
- D. qos-group is local to the router.

Answer: D

QUESTION NO: 2

Which Cisco IOS command will show a summary of probes?

- A. show ip sla statistics
- B. show ip sla reponder
- C. show ip sla monitors
- D. show ip sla configuration

Answer: D

QUESTION NO: 3

Which three match statements are valid in Cisco IOS XR Software? (Choose three.)

- A. match field
- B. match mpls experimental topmast
- C. match vpls
- D. match flow
- E. match qos-group
- F. match port-type

Answer: A, B, E

QUESTION NO: 4

642-785

Which are the two locations where the SP network device always trusts the QoS markings neighbor? (Choose two)

- A. at the ingress PE
- B. at the egress PE
- C. at the SP core
- D. at the ingress CE
- E. at the egress CE

Answer: A, C

QUESTION NO: 5

Which three benefits of IntServ and RSVP? (Choose three)

- A. RSVP helps network devices identify dynamic port numbers.
- B. IntServ networks will reject or downgrade new RSVP sessions if all reservable bandwidth is booked somewhere in a path.
- C. RSVP signaling is a scalable way to ensure all devices maintain an accurate picture of the network state.
- D. They enable the network to guarantee necessary QoS to individual data flows.
- E. The ItServ class-based approach is easy to design and implement.

Answer: B, C, D

QUESTION NO: 6

Which of these describes Short Pipe made in QoS for MPLS VPN service providers?

- A. Service provider can remark customer DSCP values.
- B. Service provider does not remark customer DSCP values. (Service provider uses independent MPLS EXP markings.) Final PE to CE policies are based on service provider markings.
- C. The customer and service provider share the same DiffServ domain.
- D. Service provider does not remark customer DSCP values. (Service provider uses independent MPLS EXP markings.) Final PE to CE policies are based on customer markings.

Answer: D

642-785

QUESTION NO: 7

A customer reports that during peak hours, FTP performance is unacceptable. Currently, the service provider maps the customer FTP traffic into the class-default traffic class and FTP traffic is marked with MPLS XP1. The class-default class traffic is configured with MPLS EXP based WRED and also with the bandwidth command. What could be causing the FTP performance issues with the customer?

- A. The FTP-type bulk traffic should be mapped to MPLS EXP 5 instead of MPLS EXP 1. The improper marking of FTP packets is causing CBWFQ to assign lower priority for FTP packets within the class-default traffic class.
- B. The service provider is using LLQ on all the core links, but the FTP traffic is not assigned to the priority queue.
- C. The bandwidth command is causing the FTP issues. It is generally not recommended to use CBWFQ for the class-default traffic class.
- D. FTP packets are being more randomly dropped than the other TCP traffic within the class-default traffic class, because the WRED thresholds for MPLS EXP 3 marked packets were configured to improper values.

Answer: D**QUESTION NO: 8**

Which is the preferred queuing method provided by Cisco IOS Software for a converged VoIP network?

- A. WFQ
- B. CBWFQ
- C. LLQ
- D. FIFO

Answer: C**QUESTION NO: 9**

What would be the first step when defining an MQC?

- A. Add one or more Match commands to classify packets
- B. Attach the traffic policy (policy map) to the interface by using the service-policy command.
- C. Define a traffic class by using the class-map command.

642-785

- D. Apply the commands such as bandwidth, police, and set dscp to enable the QoS feature.
- E. Create a traffic policy by using the policy-map command.

Answer: C

QUESTION NO: 10

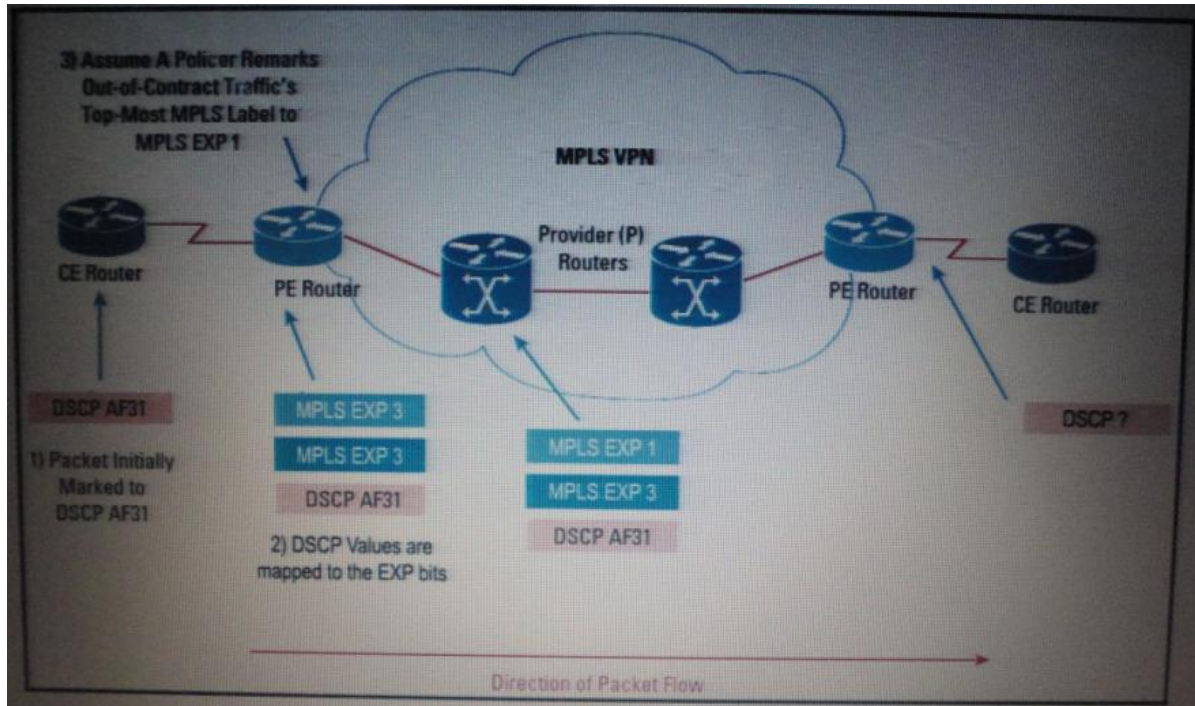
When is best-effort QoS policy most appropriate?

- A. when the customer has high bandwidth access to the network
- B. when the customer will only transport delay-tolerant data
- C. when the CE is self-managed and the customer provides adequate QoS marking
- D. when the customer plans to transport data from no more than one multimedia application

Answer: B

QUESTION NO: 11

Refer to the exhibit.



You have implemented RFC 3270 Uniform mode in your MPLS network. A customer packet with the DSCP value of AF31 has been sent to the ingress PE router. The PE router has mapped the DSCP value into the MLPS experience bits, but the policer has remarked the experience bits

642-785

of the top label. What will the DSCP value of the packet be when it leaves the egress PE router?

- A. BE
- B. CS1
- C. CS3
- D. AF31

Answer: D

QUESTION NO: 12

Where do service providers apply policy when traffic is leaving the customer network?
(Choose two)

- A. Apply input policy on the CE interface toward PE, if CE is unmanaged.
- B. Apply input policy on the PE interface toward CE, if CE is unmanaged.
- C. Apply input policy on the PE interface toward CE, if CE is managed.
- D. Apply output policy on the PE interface toward CE, if CE is managed
- E. Apply output policy on the CE interface toward PE, if CE is managed

Answer: B, E

QUESTION NO: 13

Refer to the exhibit.

642-785

```
!
class-map match-all SP-REALTIME
  match dscp ipv4 46
  match dscp ipv4 36
  match mpls experimental topmost 5
!
class-map match-any SP-CRITICAL-DATA
  match dscp ipv4 48
  match dscp ipv4 34
  match dscp ipv4 26
  match mpls experimental topmost 3 6
!
policy-map PE-THREE-CLASS-SP-MODEL
  class SP-REALTIME
    police rate percent 35
      conform-action transmit
      exceed-action drop
    priority
  class SP-CRITICAL-DATA
    bandwidth percent 40
  random-detect exp 3 15000 packets 45000 packets
  class class-default
    random-detect exp 1 2500 packets 7500 packets
    random-detect exp 0 1500 packets 10500 packets
!
interface TenGigE0/0/1/1
service-policy output PE-THREE-CLASS-SP-MODEL
```

The service provider uses a three-class service providers QoS model (real-time, critical, best effort). The provider receives reports form a customer about poor quality on their multimedia conferences. The provider recently updated their profiles to include multimedia conferencing (af41) to their real-time class, which includes voice (ef). What are the two likely causes if the problem? (Choose two)

A. The class map for SP-REALTIME does not include the DSCP value for multimedia conference and voice traffic.