

**Cisco 650-296**

**TelePresence Video Sales Engineer for Advanced  
Exam  
Version: 5.0**

**QUESTION NO: 1**

Why would you include include a gateway in your design?

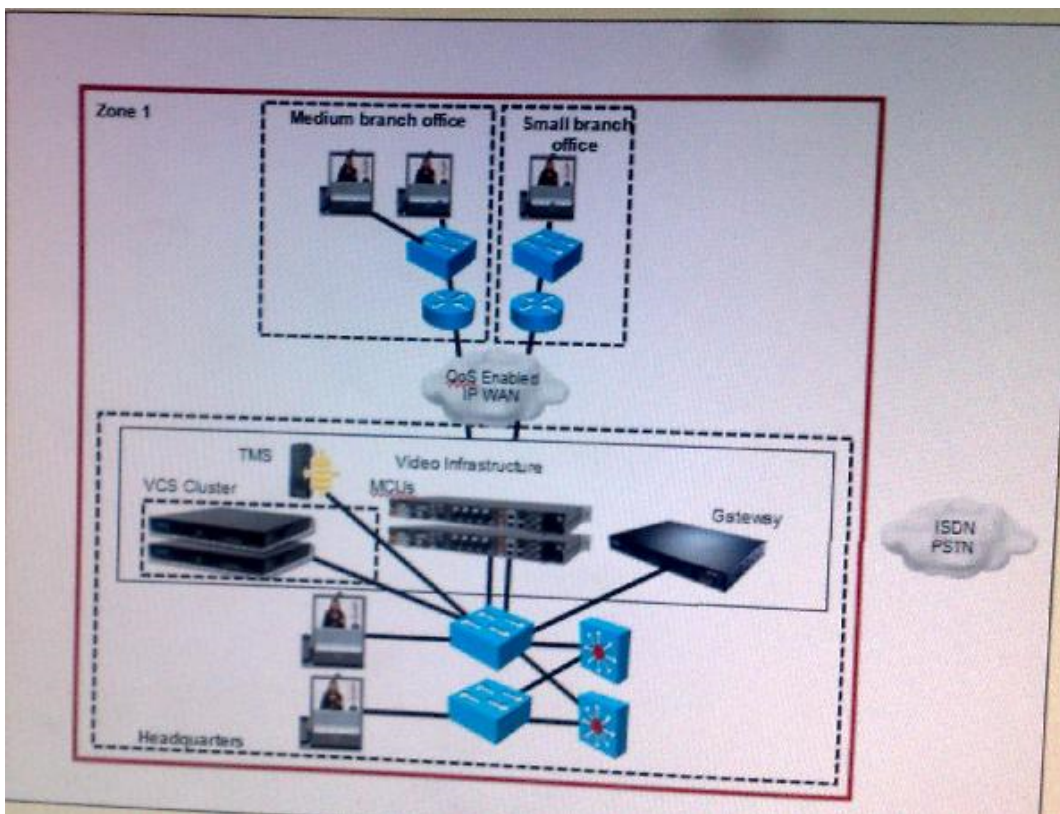
- A. Gateways assist in video and conferencing integration
- B. Gateways allow for simplification of the address plan by elimination the need for dialing a full PSTN number
- C. Gateways provide network translation if varying protocols are used
- D. Gateways are required to integrate multiple endpoints

**Answer: C**

**Explanation:**

**QUESTION NO: 2**

Refer to the exhibit, Which deployment model is represented?



- A. campus multizone
- B. WAN multizone
- C. campus single zone
- D. WAN single zone

**Answer: D**

**Explanation:**

**QUESTION NO: 3**

Which three methods can be used to start a conference with the Cisco TelePresence Video Communication Server? (Choose three)

- A. Use the web interface of the Cisco TelePresence Video Communication Server
- B. Use the Cisco TelePresence System user interface
- C. Call directly into a conference from an endpoint
- D. Use a FindMe connection
- E. Connect to a VCS Expressway from an IP endpoint
- F. Receive a request-for-conference call from a connected user
- G. Use the Cisco TelePresence remote control

**Answer: B,C,G**

**Explanation:**

**QUESTION NO: 4**

Which of these is an advantage of the multizone model VCS with Prefix Dialing?

- A. Location requests are only sent to the relevant zone
- B. Location VCS servers only need to know about the directory VCS and do not need to know about any other local VCS
- C. When adding a new zone, only the directory gatekeeper needs to be configured
- D. All gatekeepers know about all calls at times

**Answer: A**

**Explanation:**

**QUESTION NO: 5**

Your network uses a combination of SIP and H.323 endpoints. When planning to implement firewalls for security, what device permits traversal of the firewall for these devices?

- A. Gateway
- B. VCS Expressway
- C. Tandberg Management Suite
- D. multipoint control unit
- E. Cisco TelePresence