

**Microsoft 70-237**

**Microsoft 70-237 Pro: Designing Messaging Solutions  
with Microsoft Exchange Server 2007**

**Practice Test**

Version 2.1

**QUESTION NO: 1**

You are the messaging engineer for your company. You plan to deploy Exchange Server 2007.

Your Exchange Server 2007 design includes the use of local continuous replication. All mailbox databases are backed up daily.

You need to recommend a recovery plan to restore individual mailbox content. Your plan should meet the following requirements:

During the restore process, users must have access to their mailboxes.

Information must be restored to a folder other than the original folder.

Deleted mailbox content can be restored after that content has been purged from the mailbox database.

What should you recommend?

- A. Mount the local continuous replication database that contains the user mailboxes. Use the Exchange Management Shell to export user mailboxes to an alternate location.
- B. Use the Exchange Management Shell to retrieve a list of mailboxes, and then assign those mailboxes to a managed folder policy.
- C. Restore the mailbox database that contains the user mailboxes to a recovery storage group. Use the Exchange Management Shell to restore the users mailbox to an alternate folder in the users existing mailbox.
- D. Restore the mailbox database that contains the user mailboxes to a recovery storage group. Use the Exchange Management Shell to move the user mailboxes to another mailbox database.

**Answer: C**

**QUESTION NO: 2**

You are the messaging engineer for your company. Your company has an Exchange Server 2007 messaging system. Your company's network has five Edge Transport servers. The Edge Transport servers handle all e-mail messages sent to and received from the Internet. Your company wants to implement a stricter e-mail security policy. You need to recommend a solution to encrypt all e-mail messages sent to the Internet. Which solution should you recommend?

- A. Deploy e-mail certificates to all users. Instruct all users to encrypt e-mail messages with S/MIME.
- B. Configure Domain Security on one Edge Transport server. Clone the configuration to all Edge Transport servers.
- C. Enable the Externally Secured authentication mechanism for all Edge Transport servers.

D. Create and configure anIPsec policy. Deploy the IPsec policy on all Edge Transport servers.

**Answer: A**

### QUESTION NO: 3

You are the messaging engineer for your company. Your company has a main office and 30 branch offices. Your company has a Microsoft Exchange Server 2003 messaging system. A routing group is configured for each office. As part of your transition to Exchange Server 2007, you recently deployed Client Access servers. You plan to deploy Hub Transport servers. You need to prepare the Exchange organization for the deployment of the Hub Transport servers. What should you do?

- A. Create new Active Directory sites. Place the Exchange Server 2003 servers and the Exchange Server 2007 servers into separate sites.
- B. Configure multiple IP addresses on all Exchange Server 2007 servers. Disable Windows Firewall for all network connections.
- C. Create new routing groups. Place the Exchange Server 2007 server objects into the new routing groups.
- D. Suppress propagation of link state information on all Exchange Server 2003 servers.

**Answer: D**

### QUESTION NO: 4

You are the messaging engineer for your company.

You plan to deploy Exchange Server 2007.

You need to recommend a plan to back up the mailbox databases. Your backup plan should meet the following requirements:

- A full backup of the Mailbox database must be performed twice a day.
- Backups must not interfere with online maintenance.
- Backups must have minimal impact on server performance.

Which two elements should your backup plan include? (Each correct answer presents part of the solution. Choose two.)

- A. Add additional physical disks to the mailbox servers. Move transaction logs to the new disks.
- B. Perform volume shadow copy backups of the active copy of the mailbox databases at 1:00 p.m. and 11:00 p.m.

- C. Add additional physical disks to the Mailbox servers. Configure each storage group to use local continuous replication to replicate the databases on the new disks.
- D. Create additional storage groups and mailboxes databases. Distribute mailboxes across multiple mailbox databases.
- E. Perform volume shadow copy backups of the passive copy of the mailbox database at 1:00 p.m. and 11:00 p.m.
- F. Perform streaming backups of the mailbox databases at 1:00 p.m. and 11:00 p.m.

**Answer: C,E**

#### QUESTION NO: 5

You are the messaging engineer for your company. Your messaging system is running Exchange Server 2007.

You need to create a disaster recovery plan for mailboxes and mailbox content. Your plan should meet the following requirements:

Deleted mailboxes and mailbox content must be available on backup media after they have been removed from the Exchange server.

Users must be able to recover mailbox content that has been deleted within the last seven days. Administrators must be able to recover a mailbox that has been deleted within the last seven days.

Which three elements should your disaster recovery plan include? (Each correct answer presents part of the solution. Choose 3.)

- A. For each mailbox database, set the deleted mailbox retention time to seven days.
- B. For each mailbox database, allow the database to be overwritten by a restore.
- C. For each mailbox database, configure the information store to permanently delete items only after the database has been backed up.
- D. For each mailbox database, set the deleted item retention time to seven days.
- E. For each mailbox database, configure the maintenance schedule to run every seven days.

**Answer: A,C,D**

#### QUESTION NO: 6

You are the messaging engineer for your company. Your company has a main office in London and branch offices in Montreal, New York, Tokyo, and Toronto.

Your network consists of an Edge Transport server and five Hub Transport servers. The Edge Transport server routes all e-mail received from the Internet. The Edge Transport server has anti-

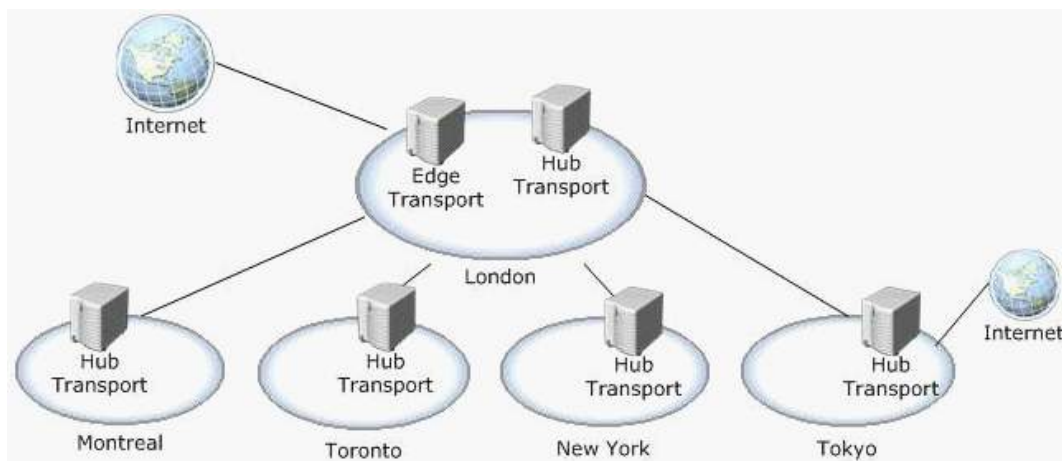
spam agents enabled and configured. The network is configured as shown in the exhibit. (Click the Exhibit button.)

You need to design an Internet e-mail solution that meets the following requirements:

Filters spam in the event that an Edge Transport server fails.

Sends and receives e-mail from the Internet in the event that an Edge Transport server fails.

Which two elements should your design include? (Each correct answer presents part of the solution. Choose two.)



- A. EnableEdgeSync between the Edge Transport server and the New York Hub Transport server.
- B. EnableEdgeSync between the Edge Transport server and the London Hub Transport server.
- C. Add an A record and an MX record in the company's Internet DNS zone for the Tokyo Hub Transport server. Run the ImportEdgeConfig.ps1 script on the Tokyo Hub Transport server.
- D. Enable Anonymous authentication on the Receive connector for the Tokyo Hub Transport server.
- E. Add an A record and an MX record in the company's Internet DNS zone for the Tokyo Hub Transport server. Run the install-AntispamAgents.ps1 script on the Tokyo Hub Transport server.
- F. Enable Partner authentication on the Receive connector for the Tokyo Hub Transport server.

**Answer: D,E**

#### QUESTION NO: 7

You are the messaging engineer for your company. Your company has an Exchange Server 2007 messaging system.

Your company uses third-party archive software to remove mailbox content that is older than 90 days. The archive software removes content from each mailbox's Inbox, Sent Items folder and all subfolders. The archive software manages message content older than three years in a folder named Long Term.

You need to recommend a solution that allows users to manage items for long term storage. Your solution should meet the following requirements:

For each mailbox, automatically create a mailbox folder named Long Term.

Allow users to keep e-mail content longer than 90 days by manually moving messages into the Long Term mailbox folder.

Which two elements should your solution include? (Each correct answer presents part of the solution. Choose two.)

- A. Create a managed custom folder named Long Term. Create a managed folder mailbox policy that includes the Long Term folder. Assign this policy to all users.
- B. Create a managed content setting for the Inbox folder. Configure this managed content setting to move all content older than 90 days to the managed custom folder named Long Term.
- C. On each mailbox server, configure the managed folder assistant to run daily.
- D. Create a managed content setting for the Entire Mailbox. Configure the managed content setting to move all content older than 90 days to the managed custom folder named Long Term.
- E. On each mailbox server, schedule the Update-StorageGroupCopy cmdlet to run daily.

**Answer: A,C**

#### QUESTION NO: 8

You are the messaging engineer for your company. Your company hosts five different SMTP domains. Your company plans to deploy Exchange Server 2007 on a server named Server1. Server1 will receive all inbound SMTP e-mail for your company. You need to recommend a configuration that allows users to receive e-mail for all five SMTP domains. Which two configurations should you recommend? (Each correct answer presents part of the solution. Choose two.)

- A. Add the Anonymous Users permission to the default Receive connector.
- B. For each SMTP domain, create a Send connector.
- C. For each SMTP domain, create an Email Address Policy and configure an Accepted Domain.
- D. For each SMTP domain, create an Email Address Policy and remove the default Receive connector.
- E. Add the Legacy Exchange Servers permission to the default Receive connector.

**Answer: A,C**

#### QUESTION NO: 9

You are the messaging engineer for your company. You deploy a new Exchange Server 2007 server named Server1 in your existing Microsoft Exchange Server 2003 organization. You need to plan for the creation of recipients on Server1. What should you recommend?

- A. Use the Connect-Mailboxcmdlet from the Exchange Management Shell.
- B. Use Active Directory Users and Computers.
- C. Use the Exchange Management Console.
- D. Use the Set-CASMailbox cmdlet from the Exchange Management Shell.

**Answer: C**

#### **QUESTION NO: 10**

You are the messaging engineer for your company. You have deployed Exchange Server 2007.

Your company uses a centralized backup system that is nearing its peak capacity.

You need to recommend a backup plan for your Exchange Server 2007 Mailbox server that meets the following requirements:

Back up all mailbox data every Tuesday night.

Back up changes to mailbox data every night except Tuesday night.

Minimize the amount of time required to complete backups.

Minimize the risk of transaction log disks exceeding available disk space.

What should you recommend?

- A. Perform a normal backup on Tuesday night and a differential backup the other nights of the week.
- B. Perform a differential backup on Tuesday night and a normal backup the other nights of the week.
- C. Perform a normal backup on Tuesday night and an incremental backup the other nights of the week.
- D. Perform a copy backup on Tuesday night and a normal backup the other nights of the week.

**Answer: C**

#### **QUESTION NO: 11**

You are the messaging engineer for your company. Your messaging system is Exchange Server 2007. Your company is running a message archival system that removes messages that are older than 180 days. Due to compliance requirements, you need to allow users to retain e-mail in a

folder in their mailboxes for up to 5 years. The folder must be automatically created by your Exchange Server 2007 servers. What should you recommend?

- A. Create a managed custom folder and create a managed folder mailbox policy. Schedule messaging records management to run daily on each mailbox server.
- B. Create a managed content setting for the Inbox and create a managed folder mailbox policy. Schedule messaging records management to run on each mailbox server.
- C. Create archive mailboxes for each department and configure an organization-wide transport rule to forward copies of messages from executives to the archive mailbox.
- D. Create public folders for each department and configure an organization-wide transport rule to forward copies of messages from executives to the appropriate public folders.

**Answer: A**

#### QUESTION NO: 12

You are the messaging engineer for your company. Your network includes an Active Directory domain, Microsoft Windows Rights Management Services, and an Enterprise Certificate Authority server. All mailboxes are located on a single Exchange Server 2007 server. All clients use Microsoft Office Outlook 2007. You need to recommend security changes so that e-mail messages that are sent to recipients outside of the company can be signed using S/MIME digital signatures. What should you recommend?

- A. Install the Windows Rights Management client on all client computers.
- B. Create a transport rule that appends a disclaimer to all outbound messages and creates a message header called X-Smime for all outbound messages.
- C. Issue x.509 certificates to all client computers.
- D. Issue x.509 certificates to all users.

**Answer: D**

#### QUESTION NO: 13

You are the messaging engineer for your company. You have deployed four Exchange Server 2007 servers: a Mailbox server, a Hub Transport server, a Client Access server, and an Edge Transport server. The Edge Transport server is located in the perimeter network and receives all e-mail from the Internet. You need to recommend a solution to prevent internal users from sending e-mail messages with MP3 and WAV file attachments to each other. What should you recommend?

- A. On the Edge Transport server, create a transport rule that drops messages with MP3 or WAV attachments.



- B. On the Hub Transport server, install the anti-spam agents, and add the MP3 and WAV file extensions to the attachment filter entry list.
- C. On the Edge Transport server, add the MP3 and WAV file extensions to the attachment filter entry list.
- D. On the Hub Transport server, create a transport rule that drops messages with MP3 or WAV attachments.

**Answer: D**

#### QUESTION NO: 14

You are the messaging engineer for Blue Yonder Airlines. Blue Yonder Airlines has a Microsoft Exchange Server 2003 messaging system. Blue Yonder Airlines recently acquired Contoso, Ltd. An Exchange Server 2003 server named Server1 receives all e-mail sent from Contoso to Blue Yonder Airlines. The SMTP virtual server on Server1 is configured to accept connections only from the IP addresses of the Contoso servers. You install the Exchange Server 2007 Edge Transport server role on a server named Server2. You need to ensure that Server2 only allows connections from the Contoso servers. What should you do?

- A. Create a new Transport rule on Server2.
- B. On Server2s default Receive connector, create a remote IP address range with the IP subnet of the Contoso servers.
- C. Create a new Receive connector on Server2 named Server1 Connector. Disable Anonymous authentication.
- D. Restore the Internet Information Services (IIS)metabase from Server1 to Server2.

**Answer: B**

#### QUESTION NO: 15

You are the messaging engineer for your company. You deploy Exchange Server 2007 Edge Transport servers on your network. The Edge Transport servers receive all inbound e-mail from the Internet. You need to ensure that the latest anti-spam definition updates are always used to filter incoming e-mail from the Internet. What should you do?

- A. Enable the Hub Transport servers to download anti-spam updates from Microsoft Update.
- B. Enable and configure cloned configuration for the Edge Transport server.
- C. Enable and configure theEdgeSync service.
- D. Enable the Edge Transport server to download anti-spam updates from Microsoft Update.

**Answer: D**

**QUESTION NO: 16**

You are the messaging engineer for your company. The company has a main office and four branch offices. You are currently running Exchange Server 2007. Each office contains two clustered Mailbox servers, one Hub Transport server and one Client Access server. You need to recommend a solution for e-mail delivery redundancy on your network in case a Hub Transport server fails. Which solution should you recommend?

- A. In each office, install the Client Access server role on a new server.
- B. Run the Setup.exe /roles:HT command on each active clustered Mailbox server.
- C. Run the Setup.exe /roles:HT command on each passive clustered Mailbox server.
- D. In each office, install the Hub Transport server role on a new server.

**Answer: D**

**QUESTION NO: 17**

You are the messaging engineer for your company. Your messaging system has both Microsoft Exchange Server 2003 servers and Exchange Server 2007 servers. You plan to enable message tracking on all Exchange servers. You need to instruct the administrators which tools to use to review the message tracking information. Which tools should you instruct the administrators to use? (Each correct answer presents part of the solution. Choose two)

- A. The Exchange Server 2003 management tools.
- B. The Winroute and MSGanalyzer tools.
- C. The Log Parser Resource Kit tool.
- D. The Exchange Server 2007 management tools.

**Answer: A,D**

**QUESTION NO: 18**

You are the messaging engineer for your company. The network includes three Exchange Server 2007 servers. One server hosts the Mailbox server role, another server hosts the Hub Transport server role, and another server hosts the Client Access server role. Users access their mailboxes by using Microsoft Office Outlook 2003. Outlook clients are on the same network as the Exchange servers. You need to recommend a solution that ensures all communication between the Outlook clients and the Mailbox server are encrypted. What should you recommend?

- A. Configure the Mailbox server to require MAPI encryption.