

Microsoft 70-293

**Planning and Maintaining a Microsoft Windows Server
2003 Network Infrastructure**

Version: 52.8

Topic 1, Exam Set 1**QUESTION NO: 1**

You are a network administrator for your company. The network consists of a single Active Directory domain. The network contains 80 Web servers that run Windows 2000 Server. The IIS Lockdown Wizard is run on all Web servers as they are deployed. Your company is planning to upgrade its Web servers to Windows Server 2003. You move all Web servers into an organizational unit (OU) named Web Servers. You are planning a baseline security configuration for the Web servers. The company's written security policy states that all unnecessary services must be disabled on servers. Testing shows that the server upgrade process leaves the following unnecessary services enable* SMTP Telnet

Your plan for the baseline security configuration for Web servers must comply with the written security policy. You need to ensure that unnecessary services are always disabled on the Web servers. What should you do?

- A.** Create a Group Policy object (GPO) and import the Hisecws.inf security template. Link the GPO to the Web Servers OU.
- B.** Create a Group Policy object (GPO) to apply a startup script to stop the unnecessary services. Link the GPO to the Web Servers OU.
- C.** Create a Group Policy object (GPO) to apply a logon script that disables the unnecessary services. Link the GPO to the Web Servers OU.
- D.** Create a Group Policy object (GPO) to set the startup type of the unnecessary services to Disabled. Link the GPO to the Web Servers OU.

Answer: D

Explanation:

Windows Server 2003 installs a great many services with the operating system, and configures quite a few with the Automatic startup type, so that these services load automatically when the system starts. Many of these services are not needed in a typical member server configuration, and it is a good idea to disable the ones that the computer does not need. Services are programs that run continuously in the background, waiting for another application to call on them. Instead of controlling the services manually, using the Services console, you can configure service parameters as part of a GPO. Applying the GPO to a container object causes the services on all the computers in that container to be reconfigured. To configure service parameters in the Group Policy Object Editor console, you browse to the Computer Configuration\Windows Settings\Security Settings\System Services container and select the policies corresponding to the services you want to control.

Reference:

Jill Spealman, Kurt Hudson & Melissa Craft, MCSE Self-Paced Training Kit (Exam 70-294); Planning, Implementing, and Maintaining a Microsoft Windows Server 2003 Active Directory Infrastructure, Microsoft Press, Redmond, Washington, 2004, p. 13:1-6

QUESTION NO: 2 CORRECT TEXT

You are the network administrator for your company. You are configuring security on the Windows Server 2003 computers in the human resources (HR) department. All servers for the HR department are located in the HR Servers organizational unit (OU). You need to configure security for these servers by using existing Group Policy objects (GPOs). Company policy dictates that you should not create additional GPOs.

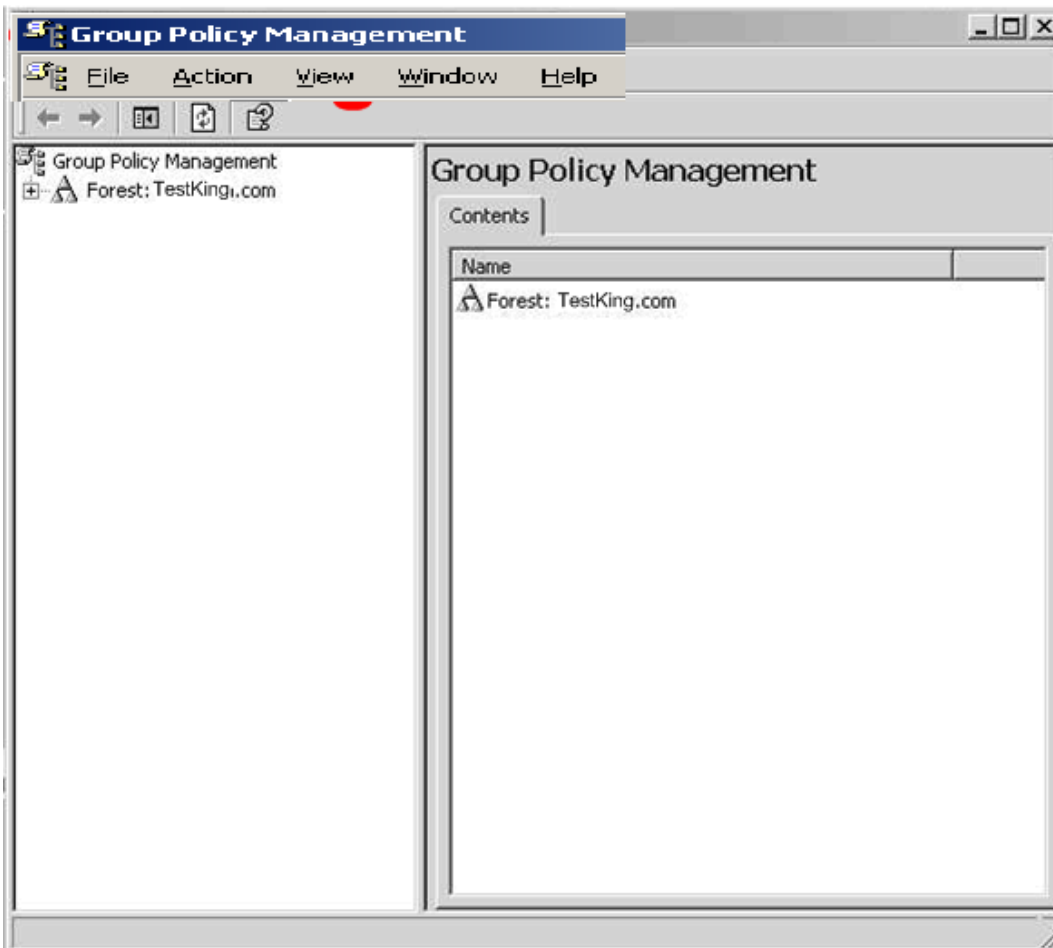
You have been instructed to use GPO1 to configure these settings. In addition, you must ensure the following requirements are met.

Web hosting services should not be installed on these servers.

Web hosting components should not be installed on these servers in the future.

Other services on these servers should not be affected.

You need to configure settings by using the minimal amount of configurations on the GPO. What should you do? To answer, click the Simulation button and then perform the appropriate actions.

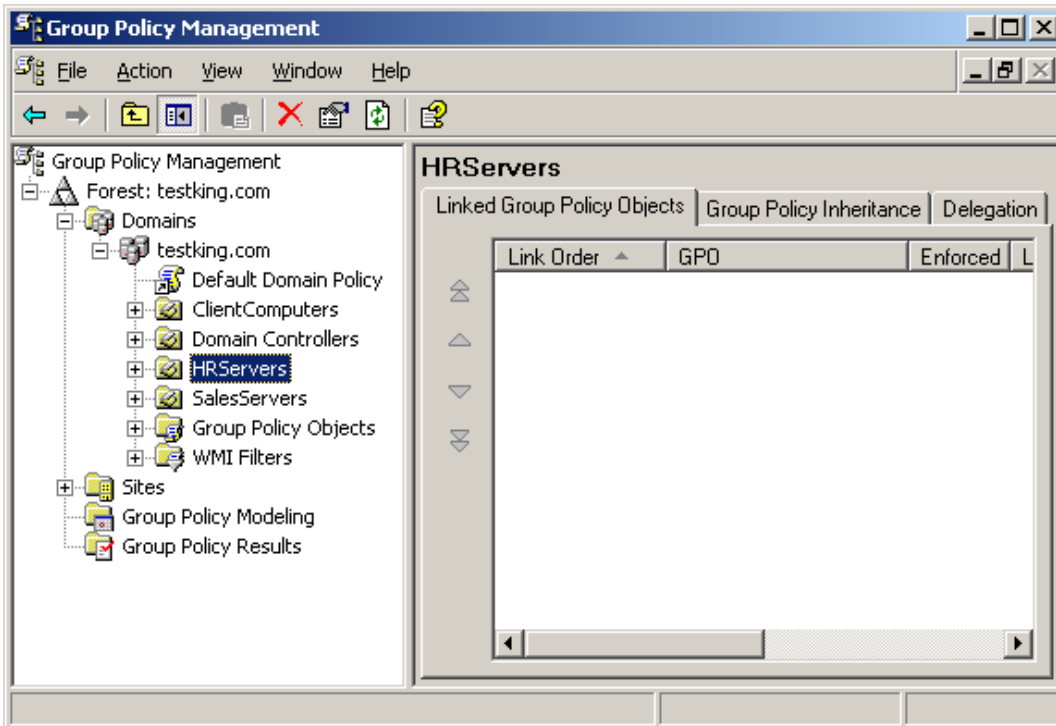


Answer: Here is step by step solution for this.

Explanation:

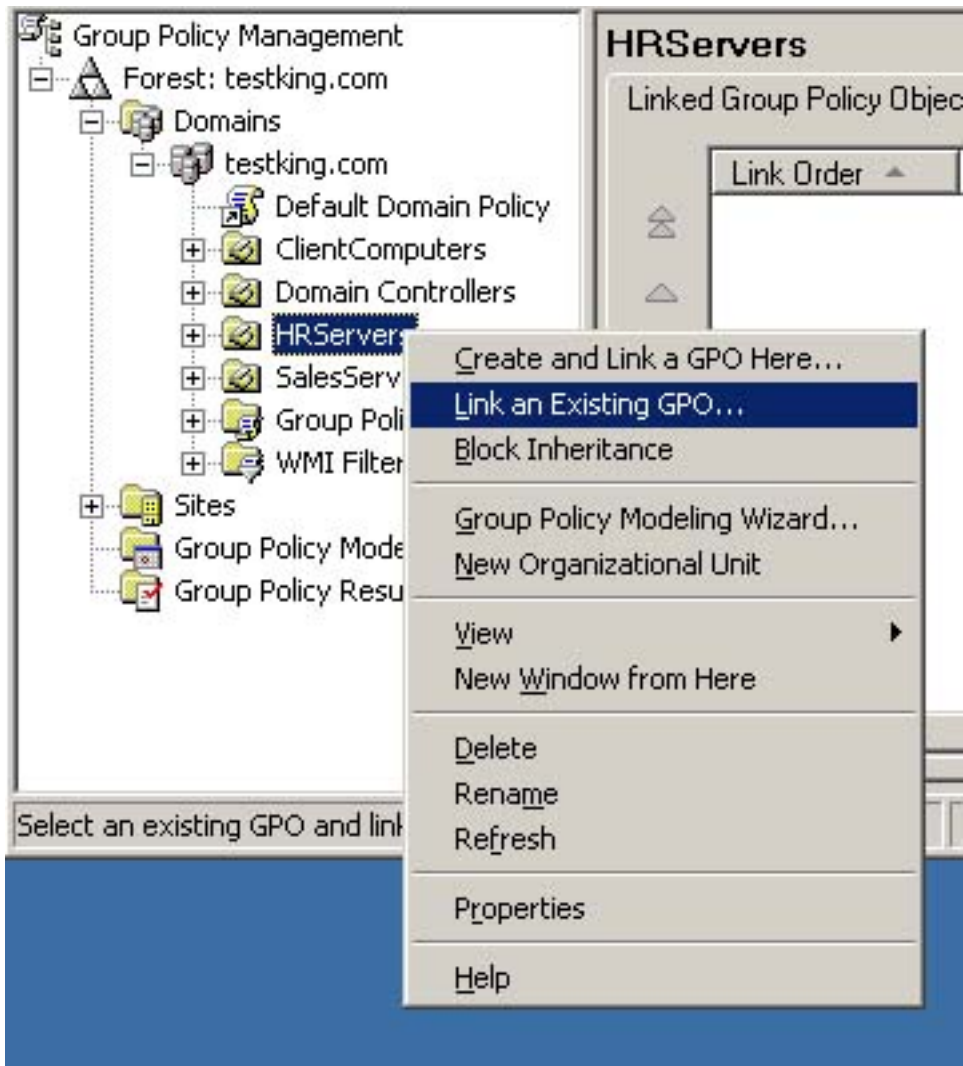
Step #1.

In Group Policy Management, expand the tree until you can see the Organizational Units.

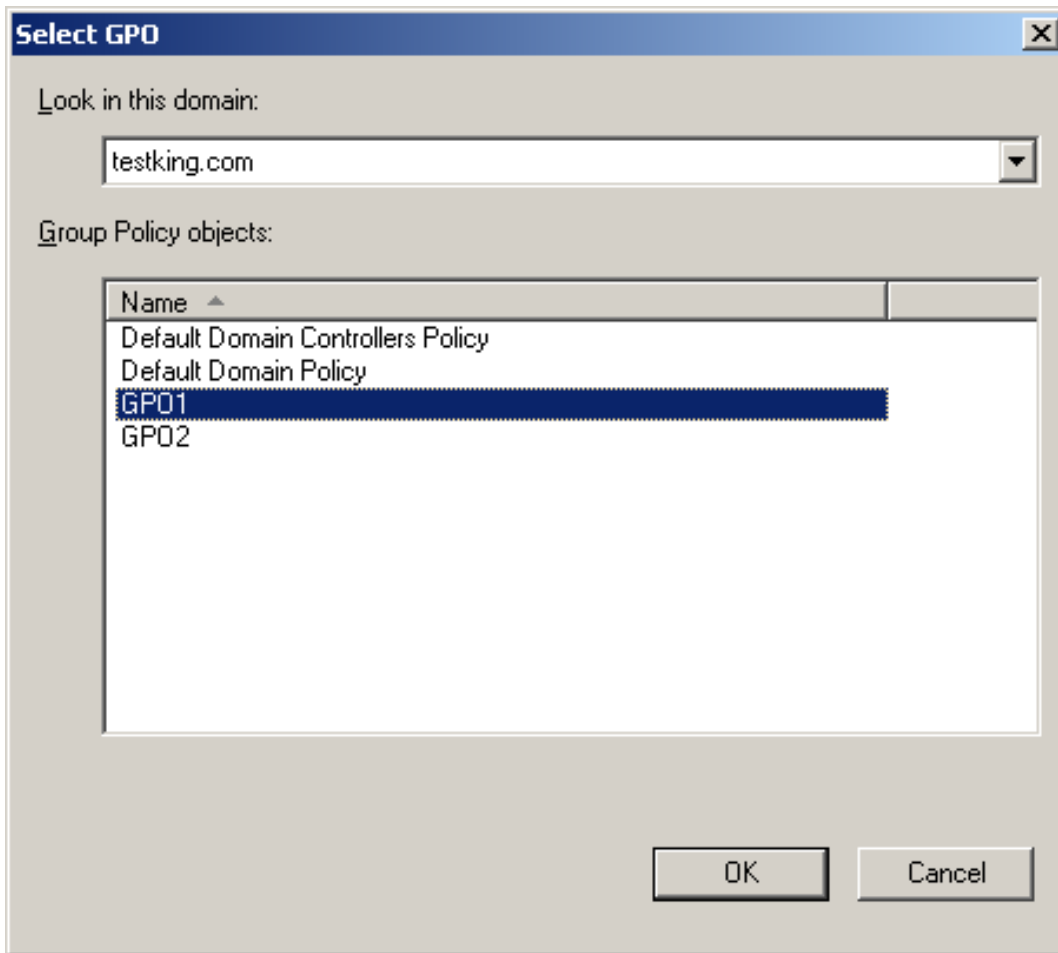


Step #2.

Right click on the HRServers OU and select “Link an Existing GPO...”

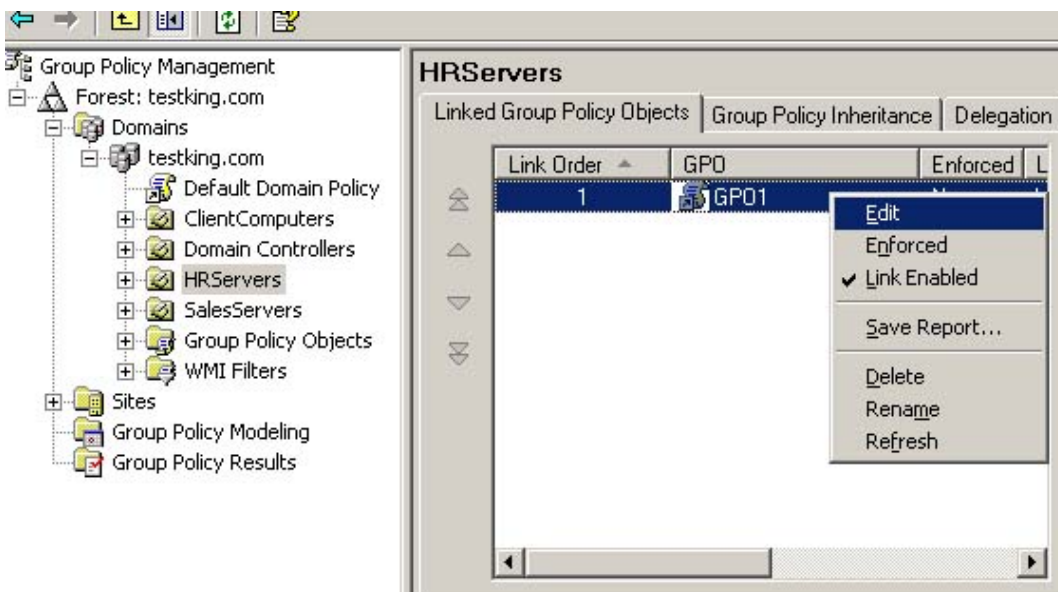
**Step #3.**

Select GPO1 and click OK.



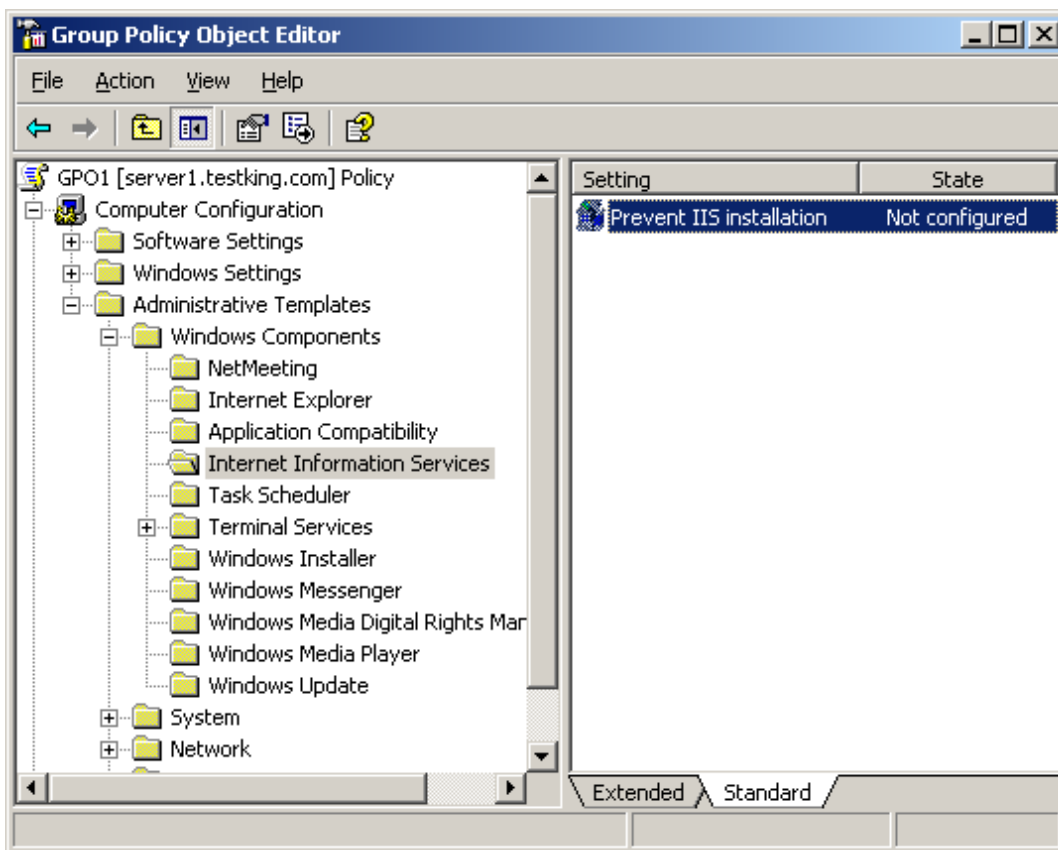
Step #4.

Right click on GPO1 and select Edit.



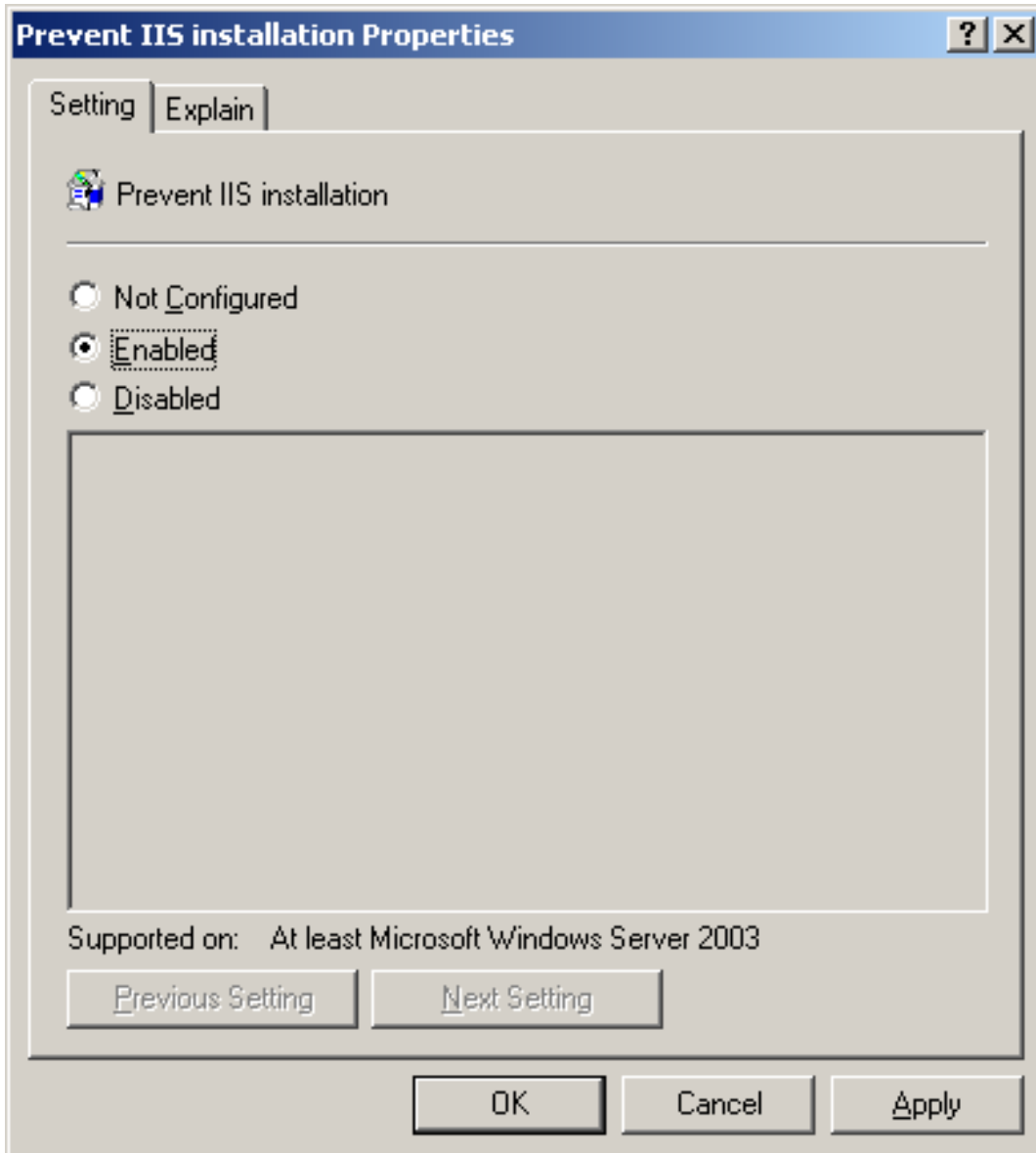
Step #5.

Expand Computer Configuration > Administrative Templates and select Internet Information Services. In the right pane, double click “Prevent IIS installation”.



Step #6.

Select “Enabled” and click OK.

**QUESTION NO: 3**

You are the network administrator for your company. All servers run Windows Server 2003. You configure a baseline security template named Baseline.inf. Several operations groups are responsible for creating templates containing settings that satisfy operational requirements. You receive the templates shown in the following table.

Operations group	Template name	Applies to
File and Print	File.inf	File servers
Database	Db.inf	Database servers
Security	Sec.inf	All resource servers

The operations groups agree that in the case of conflicting settings, the priority order listed in the following table establishes the resultant setting.

Template	Priority
Sec.inf	1
Baseline.inf	2
Specific server role template	3

You need to create one or more Group Policy objects (GPOs) to implement the security settings. You want to minimize the amount of administrative effort required when changes are requested by the various operations groups. What should you do?

- A.** Create a GPO and import the following templates in the following order: Sec.inf, Db.inf, File.inf, Baseline.inf.
- B.** Create a GPO and import the following templates in the following order: Baseline.inf, Sec.inf. Create a GPO for each server role and import only the specific template for that role into each respective GPO.
- C.** Create a GPO and import the following templates in the following order: Sec.inf, Baseline.inf. Create a GPO for each server role and import only the specific template for that role into each respective GPO.
- D.** Create a GPO for each server role and import the following templates in the following order: Baseline.inf, specific server role template, Sec.inf.

Answer: B

Explanation:

Windows Server 2003 processes GPOs from the bottom of the list to the top of the list, with the topmost GPO having the final authority. Because policies contained in GPOs will, by default, overwrite policies of previously applied, we would need to import the Baseline.inf before the ServerSec.inf template.

Reference:

Dan Holme, and Orin Thomas, MCSA/MCSE Self-Paced Training Kit: Upgrading Your Certification to Microsoft Windows Server 2003: Managing, Maintaining, Planning, and Implementing a Microsoft Windows Server 2003 environment: Exams 70-292 and 70-296, Microsoft Press, Redmond, Washington, 2004, Chapter 5

QUESTION NO: 4

You are the network administrator for your company. The network consists of a single Active Directory domain. The company has a main office in San Francisco and branch offices in Paris and Bogota. Each branch office contains a Windows Server 2003 domain controller. All client

computers run Windows XP Professional. Users in the Bogota office report intermittent problems authenticating to the domain. You suspect that a specific client computer is causing the problem. You need to capture the authentication event details on the domain controller in the Bogota office so that you can find out the IP address of the client computer that is the source of the problem. What should you do?

- A. Configure Network Monitor to record the authentication events.
- B. Configure System Monitor to monitor the authentication events.
- C. Configure Performance Logs and Alerts with a counter log to record the authentication events.
- D. Configure Performance Logs and Alerts with an alert to trigger on authentication events.

Answer: A

Explanation:

The question states that you find out the IP address of the client computer that is the source of the problem. Using Network Monitor to capture traffic is the only way to do this.

Reference:

<http://support.microsoft.com/default.aspx?scid=kb;en-us;175062>

Martin Grasdal, Laura E. Hunter, Michael Cross, Laura Hunter, Debra Littlejohn Shinder, and Dr. Thomas W. Shinder, *Planning and Maintaining a Windows Server 2003 Network Infrastructure** Exam 70-293 Study Guide & DVD Training System, Syngress Publishing, Inc., Rockland, MA, Chapter 11, p. 826

QUESTION NO: 5

You are a network administrator for your company. You need to test a new application. The application requires two processors and 2 GB of RAM. The application also requires shared folders on the application server and requires the installation of software on the client computers. You create the test plan. You assemble a server in the test lab. You install Windows Server 2003, Web Edition on the server. You install the application on the server. You install the client software components for the application on 20 client computers in the test lab. You test the application. You discover that only some of the client computers can run the application. You turn off the client computers that ran the application successfully, and you test again. The client computers that failed in the first test now run the application successfully. You need to identify the cause of the failure and update your test plan. What should you do?

- A. Change the Application pool identity to Local Service for the default application pool.
- B. Use Add or Remove Programs to add the Application Server Windows component.
- C. Increase the Maximum number of worker processes to 20 for the default application pool.
- D. Change the test server operating system to Windows Server 2003, Standard Edition or Windows Server 2003, Enterprise Edition.