

# Microsoft

## Exam 70-337

### Enterprise Voice & Online Services with Microsoft Lync Server 2013

Version: 9.1

[ Total Questions: 108 ]

## Topic 1, Litware, Inc Case A

### Overview

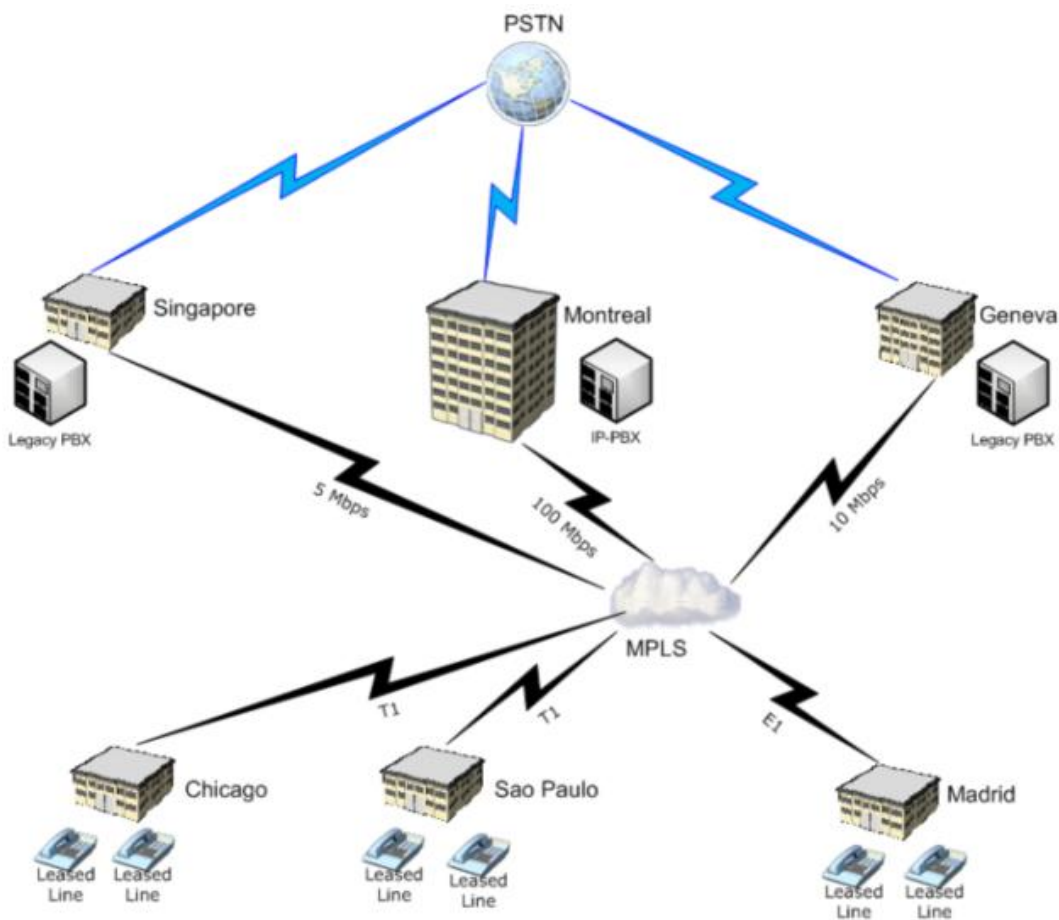
Litware, Inc., is an international air transportation company that has 700 employees. Litware has several offices worldwide. The main office is located in Montreal.

The Montreal office has 125 users.

### Existing Environment

#### Network Infrastructure

The network is configured as shown in the exhibit. (Click the Exhibit button.)



The company has an Active Directory forest named litwareinc.com that contains a single domain.

#### Lync Server and Exchange Server Infrastructure

The company has a Microsoft Exchange Server 2010 Service Pack 2 (SP2) organization that contains four servers. The servers are configured as shown in the following table.

| Server name | Location  | Role   |
|-------------|-----------|--|
| EXCH1       | Montreal  | Mailbox server<br>Client Access server<br>Hub Transport server |
| EXCH-EDGE1  | Montreal  | Edge Transport server  |
| EXCH2       | Geneva    | Mailbox server<br>Client Access server<br>Hub Transport server |
| EXCH3       | Singapore | Mailbox server<br>Client Access server<br>Hub Transport        |

The company has a Lync Server 2013 infrastructure that contains four servers. The servers are configured as shown in the following table.

| Server name | Location  | Role                              |
|-------------|-----------|-----------------------------------|
| LYNC1       | Montreal  | Standard Edition Front End Server |
| LYNC-EDGE1  | Montreal  | Standard Edition Edge Server      |
| LYNC2       | Geneva    | Standard Edition Front End Server |
| LYNC3       | Singapore | Standard Edition Front End Server |

The Lync Server infrastructure contains the components shown in the following table.

| Component name | Location  | Component    |
|----------------|-----------|--------------|
| LYNCSBA1       | Madrid    | SBA          |
| LYNCSBA2       | Sao Paulo | SBA          |
| LYNCSBA3       | Chicago   | SBA          |
| LYNCGATE1      | Montreal  | IP-PBX       |
| LYNCGATE2      | Geneva    | PSTN gateway |
| LYNCGATE3      | Singapore | PSTN gateway |

All audio conferences dial in to LYNCGATE1.

LYNC\_EDGE1 is configured for External Access.

LYNC2 and LYNC3 are configured to place and receive calls through their local PBX and PSTN gateway.

The Montreal office has a phone number range of +1-514-555-0100 to +1-514-555-0250. Phone number ranges from +1-514-555-0226 to +1-514-555-0250 are unused.

### **Problem Statements**

The company identifies the following issues:

- ✍ Users in the Madrid office report that their customers fail to reach the audio bridge.
- ✍ Remote users outside of North America report poor audio quality during conferences.
- ✍ Users report that they cannot invite people into their audio conferences by using the Invite by name or phone number feature.
- ✍ The finance department reports that fees for phone number ranges in the Montreal office have increased by 200 percent during the last five years.

### **Requirements**

#### **Business Goals**

The company plans to replace all of its legacy phone systems and devices within a year.

#### **Planned Changes**

The company plans to implement the following changes:

- ✍ Replace all of the voice mail systems with Exchange Server 2010 Unified Messaging (UM).
- ✍ Provide E911 services to users from the United States offices.
- ✍ Replace the phone number ranges in the Montreal office with extensions to a single phone number range.
- ✍ Provide a Microsoft Lync Online account to several contractors that uses the @contractors.litwareinc.com suffix.
- ✍ The contractors will use their mobile phone to place and receive calls.

#### **Business Requirements**

The company identifies the following business requirements for the planned deployment:

- ✍ Minimize hardware and software acquisition costs.
- ✍ Minimize the cost of placing long distance calls to Europe.
- ✍ Minimize the cost of placing long distance calls to North America.

#### **Technical Requirements**

The company identifies the following technical requirements for the planned deployment:

- ✍ Ensure that all users can place and receive calls if a single server fails.
- ✍ Ensure that all users can place and receive calls if a WAN link fails.
- ✍ Automatically provide E911 information to a national emergency call center in the United States.
- ✍ Limit the use of E911 services to users in United States offices only.
- ✍ Ensure that all users can find all of the company employees in the Lync Address

Book.

- ✍ Ensure that users in a partner company can add a Litware employee to their contact list without any intervention by an administrator at Litware.

### Security Requirements

The corporate security policy states that only the main phone number of the company must be displayed when users call external customers.

### Phone Number Requirements

The company identifies the following requirements for the phone numbers:

- ✍ If a caller dials a phone number range that is unassigned, the call must be transferred to an operator.
- ✍ If a caller dials a phone number in a range that was replaced by an extension, the caller must hear the extension format, and then the call must be transferred to the generic phone number range of +15145550100.
- ✍ The costs associated with phone number ranges must be reduced.
- ✍ Callers to the company must always be able to reach an employee, an operator, or a UM auto attendant.

### UM Requirements

The company plans to deploy UM with Exchange Server 2010 to meet the following requirements:

- ✍ All users must be able to use the Play on Phone feature in Microsoft Outlook.
- ✍ UM administrators must be able to configure calls to be redirected to external phone numbers.
- ✍ Users must be prevented from navigating the voice mail system menu by using their voice.

### Question No : 1 - (Topic 1)

You need to configure the Lync Server 2013 infrastructure to meet the technical requirements for E911.

You create the network and subnets for each office.

Which three tasks should you perform next? (Each correct answer presents part of the solution. Choose three.)

- A. Create a client policy.
- B. Configure the location database
- C. Create location policies.
- D. Create a response group.
- E. Create a voice route.
- F. Create a normalization rule.

**Answer: B,C,E**

**Question No : 2 - (Topic 1)**

You are evaluating the planned changes for the contractors.

You need ensure that the contractors can access Outlook Voice Access and receive voice mails from callers.

Which cmdlet should you run?

- A. New-CsExUmContact
- B. New-CsSipDomain
- C. New-CsVoicemailReroutingConfiguration
- D. New-CsSipProxyCustom

**Answer: A**

**Explanation:**

<http://technet.microsoft.com/en-us/library/gg398139.aspx>

**Question No : 3 - (Topic 1)**

You need to recommend a solution to meet the security requirement.

What should you include in the recommendation?

- A. An outbound translation rule
- B. A response group
- C. A voice policy
- D. A private phone line

**Answer: A**

**Explanation:**

<http://tsoorad.blogspot.com/2012/10/lync-2013-calling-party-number.html>

**Question No : 4 DRAG DROP - (Topic 1)**

You decommission the legacy PBX in the Singapore office. You configure all users in the Singapore office to route calls through their local Lync Server 2013 servers.

You need to identify the tasks that must be performed in each office to ensure that calls from Singapore meet the business requirements and the technical requirements.

Which task should you identify for each requirement?

To answer, drag the appropriate actions to the correct requirements in the answer area. Each action may be used once, more than once, or not at all. Additionally, you may need to drag the split bar between panes or scroll to view content.

| Actions                                     | Answer Area   |
|---|---|
| Configure pool pairing.                     | Minimize the cost of placing long distance calls to Europe. <span>Action</span>                 |
| Create a trunk between LYNC3 and LYNCGATE1. | Minimize the cost of placing long distance calls to North America. <span>Action</span>          |
| Create a trunk between LYNC3 and LYNCGATE2. | Ensure that all users can place and receive calls if a single server fails. <span>Action</span> |
| Create a trunk between LYNC3 and LYNCGATE3. |   |

**Answer:**

| Actions                                     | Answer Area   |
|---|---|
| Configure pool pairing.                     | Minimize the cost of placing long distance calls to Europe. <span>Create a trunk between LYNC3 and LYNCGATE2.</span>        |
| Create a trunk between LYNC3 and LYNCGATE1. | Minimize the cost of placing long distance calls to North America. <span>Create a trunk between LYNC3 and LYNCGATE1.</span> |
| Create a trunk between LYNC3 and LYNCGATE2. |   |
| Create a trunk between LYNC3 and LYNCGATE3. | Ensure that all users can place and receive calls if a single server fails. <span>Configure pool pairing.</span>            |

**Question No : 5 - (Topic 1)**

You need to prepare the Enterprise Voice infrastructure for E911.

Which two cmdlets should you run? (Each correct answer presents part of the solution. Choose two.)

- A. Set-CsPstnUsage
- B. Enable-CSPublicProvider
- C. Set-CsVoiceConfiguration
- D. New-CsVoiceRoute
- E. New-CsVoiceRoutingPolicy

**Answer: A,D**

**Explanation:**

<http://technet.microsoft.com/en-us/library/gg398496.aspx>

**Question No : 6 - (Topic 1)**

You need to prepare the environment for the planned Lync Online solution of the contractors. The solution must meet the business requirements and technical requirements.

What two technologies should you deploy? (Each correct answer presents part of the solution. Choose two.)

- A. Active Directory Rights Management Services (AD RMS)
- B. Active Directory Lightweight Directory Services (AD LDS)
- C. The Inter-Organization Replication tool
- D. Active Directory Federation Services (AD FS) 2.0
- E. Microsoft Online Services Directory Synchronization
- F. Microsoft Online Services Sign-in Assistant

**Answer: D,E**



**Question No : 7 - (Topic 1)**

You are evaluating the planned changes for the contractors.

You need to identify which client application the contractors will be able to use to schedule online meetings.

Which client application should you identify?

- A. Lync Web App
- B. Windows Phone devices
- C. Outlook 2010
- D. Outlook Web App

**Answer: C**

**Question No : 8 DRAG DROP - (Topic 1)**

You need to implement a solution to meet the phone number requirements.

Which four actions should you perform?

To answer, move the four appropriate actions from the list of actions to the answer area and arrange them in the correct order.

The screenshot shows a drag-and-drop interface with two main sections: 'Actions' on the left and 'Answer Area' on the right. The 'Actions' section contains four yellow boxes with the following text:

- Create two announcement number ranges.
- Import two announcement files.
- Create two announcements.
- Modify the TEL URI of the users.

The 'Answer Area' is currently empty. A vertical blue line separates the two sections, and a dotted line is visible at the top of the 'Answer Area' header.

**Answer:**

| Actions                                | Answer Area                            |
|--|--|
| Create two announcement number ranges. | Import two announcement files.         |
| Import two announcement files.         | Create two announcements.              |
| Create two announcements.              | Create two announcement number ranges. |
| Modify the TEL URI of the users.       | Modify the TEL URI of the users.       |

**Question No : 9 - (Topic 1)**

You need to ensure that the users in all of the offices can dial in to conferences by using a local phone number.

What should you create?

- A. An additional dial plan
- B. Five conferencing policies
- C. Five dial-in numbers
- D. Five additional call routes

**Answer: C**

**Question No : 10 DRAG DROP - (Topic 1)**

You need to configure UM to meet the UM requirements.

Which UM component should you use to meet each requirement?

To answer, drag the appropriate components to the correct requirements in the answer area. Each setting may be used once, more than once, or not at all. Additionally, you can split bar between panes or scroll to view content.