

Microsoft

Exam 70-341

Core Solutions of Microsoft Exchange Server 2013

Version: 18.0

[Total Questions: 209]

Topic break down

Topic	No. of Questions
Topic 1: Fabrikam, Inc	11
Topic 2: Contoso Ltd	7
Topic 3: Litware, Inc	7
Topic 4: A.Datum Corporation	9
Topic 5: Proseware, Inc	10
Topic 6: Trey Research	11
Topic 7: Mix Questions	154

Topic 1, Fabrikam, Inc**Overview**

Fabrikam, Inc., is a pharmaceutical company located in Europe. The company has 5,000 users. The company is finalizing plans to deploy an Exchange Server 2013 organization.

The company has offices in Paris and Amsterdam.

Existing Environment**Active Directory Environment**

The network contains an Active Directory domain named fabrikam.com. An Active Directory site exists for each office.

Network Infrastructure

The roles and location of each server are configured as shown in the following table.

Server name	Role	Location
DC1	Domain controller Global catalog server	Paris office
DC2	Domain controller	Paris office
DC3	Schema master Domain controller Global catalog server	Amsterdam office
FS1	File server	Paris office
FS2	File server	Paris office
FS3	File server	Amsterdam office
FS4	File server	Amsterdam office
TMG1	Microsoft Forefront Threat Management Gateway (TMG) 2010	Perimeter network in the Paris office

Client computers run either Windows 7 or Windows 8 and have Microsoft Office 2010 installed.

The Paris office uses the 192.168.1.0/24 IP range. The Amsterdam office uses the 192.168.2.0/24 IP range.

The offices connect to each other by using a high-speed, low-latency WAN link. Each office has a 10-Mbps connection to the Internet.

Planned Exchange Infrastructure

The company plans to deploy five servers that run Exchange Server. The servers will be configured as shown in the following table.

Server name	Server role	Location
EX1	<ul style="list-style-type: none">Exchange Server 2013 Mailbox serverExchange Server 2013 Client Access server	Paris office
EX2	<ul style="list-style-type: none">Exchange Server 2013 Mailbox serverExchange Server 2013 Client Access server	Paris office
EX3	<ul style="list-style-type: none">Exchange Server 2013 Mailbox serverExchange Server 2013 Client Access server	Amsterdam office
EX4	<ul style="list-style-type: none">Exchange Server 2013 Mailbox serverExchange Server 2013 Client Access server	Amsterdam office
EDGE1	Exchange Server 2010 Edge Transport server	Perimeter network in the Paris office

The company plans to have mailbox databases replicated in database availability groups (DAGs). The mailbox databases and DAGs will be configured as shown in the following table.

DAG name	Database name	DAG member
DAG1	OperationsDB FinanceDB SalesDB	EX1, EX3
DAG2	MarketingDB ResearchDB LabDB	EX2, EX4

DAG1 will use FS1 as a file share witness. DAG2 will use FS3 as a file share witness.

You plan to create the following networks on each DAG:

- ✍ A dedicated replication network named DAGNET1
- ✍ A MAPI network named DAGNET2

All replication traffic will run on DAGNET1. All client connections will run on DAGNET2. Client connections must never occur on DAGNET1. Replication traffic must only occur on DAGNET2 if DAGNET1 is unavailable.

Each Exchange Server 2013 Mailbox server will be configured to have two network adapters.

The following two mailbox databases will not be replicated as part of the DAGs:

- ✍ A mailbox database named AccountingDB that is hosted on EX1
- ✍ A mailbox database named TempStaffDB that is hosted on EX4

EDGE1 will have an Edge Subscription configured, with both EX1 and EX2 as targets.

Requirements

Planned Changes

An external consultant reviews the Exchange Server 2013 deployment plan and identifies the following areas of concern:

- ✍ The DAGs will not be monitored.
- ✍ Multiple Edge Transport servers are required to prevent the potential for a single point of failure.

Technical Requirements

Fabrikam must meet the following technical requirements:

- ✍ Email must be evaluated for SPAM before the email enters the internal network.
- ✍ Production system patching must minimize downtime to achieve the highest possible service to users.
- ✍ Users must be able to use the Exchange Control Panel to autonomously join and disjoin their department's distribution lists.
- ✍ Users must be able to access all Internet-facing Exchange Server services by using the names of mail.fabrikam.com and autodiscover.fabrikam.com.

The company establishes a partnership with another company named A. Datum

Corporation. A. Datum uses the SMTP suffix adatum.com for all email addresses. Fabrikam plans to exchange sensitive information with A. Datum and requires that the email messages sent between the two companies be encrypted. The solution must use Domain Security.

Users in the research and development (R&D) department must be able to view only the mailboxes of the users in their department from Microsoft Outlook. The users in all of the other departments must be prevented from viewing the mailboxes of the R&D users from Outlook.

Administrators plan to produce HTML reports that contain information about recent status changes to the mailbox databases.

Fabrikam is evaluating whether to abort its plan to implement an Exchange Server 2010 Edge Transport server and to implement a Client Access server in the Paris office instead. The Client Access server will have anti-spam agents installed.

Question No : 1 - (Topic 1)

You need to recommend which type of group must be used to create the planned department lists.

Which type of group should you recommend?

- A. Universal Distribution
- B. Dynamic Distribution
- C. Global Security
- D. Universal Security

Answer: A

Question No : 2 DRAG DROP - (Topic 1)

You are evaluating the implementation of a second Edge Transport server named EDGE2 in the Amsterdam office.

You need to recommend which tasks must be performed to ensure that email messages can be sent by the organization if a single Edge Transport server fails.

Which three actions should you include in the recommendation?

To answer, move the three appropriate actions from the list of actions to the answer area and arrange them in the correct order.

Actions	Answer Area
From EDGE2, run the exportedgeconfig.ps1 script.	
Update the Send connectors on both Edge Transport servers.	
From EDGE1, run the exportedgeconfig.ps1 script.	
Create a new Edge Subscription to EDGE2.	
From EDGE2, run the importedgeconfig.ps1 script.	
Create a new Edge Subscription to EDGE1.	
From EDGE1, run the importedgeconfig.ps1 script.	

Answer:

Actions	Answer Area
From EDGE2, run the exportedgeconfig.ps1 script.	From EDGE1, run the exportedgeconfig.ps1 script.
Update the Send connectors on both Edge Transport servers.	From EDGE2, run the importedgeconfig.ps1 script.
From EDGE1, run the exportedgeconfig.ps1 script.	Create a new Edge Subscription to EDGE2.
Create a new Edge Subscription to EDGE2.	
From EDGE2, run the importedgeconfig.ps1 script.	
Create a new Edge Subscription to EDGE1.	
From EDGE1, run the importedgeconfig.ps1 script.	

Explanation:

From EDGE1, run the exportedgeconfig.ps1 script.
 From EDGE2, run the importedgeconfig.ps1 script.
 Create a new Edge Subscription to EDGE2.

Question No : 3 HOTSPOT - (Topic 1)

You need to recommend which configurations must be set for each network.

Which configurations should you recommend?

To answer, select the appropriate configurations for each network in the answer area.

Network Name	ReplicationEnabled	MapiAccessEnabled
DAGNET1	<input type="checkbox"/>	<input type="checkbox"/>
DAGNET2	<input type="checkbox"/>	<input type="checkbox"/>

Answer:

Network Name	ReplicationEnabled	MapiAccessEnabled
DAGNET1	<input checked="" type="checkbox"/>	<input type="checkbox"/>
DAGNET2	<input type="checkbox"/>	<input checked="" type="checkbox"/>

Question No : 4 - (Topic 1)

You need to recommend which task is required to prepare Active Directory for the planned Exchange Server 2013 implementation.

What should you recommend?

- A. On any domain controller in the Paris office, run setup.exe /preparead.
- B. On any domain controller in the Amsterdam office, run setup.exe /preparead.
- C. On any domain controller in the Paris office, run setup.exe /preparealldomains.
- D. On any domain controller in the Amsterdam office, run setup.exe /preparedomain.

Answer: B

Question No : 5 - (Topic 1)

You need to recommend which recovery solution will restore access to all of the mailboxes in AccountingDB if EX1 fails. The solution must restore access to email messages as quickly as possible.

Which recovery solution should you recommend?

- A. On EX2, create a new mailbox database. Restore the database files, and then mount the database. Run the New-MailboxRestoreRequest cmdlet for all of the mailboxes in the database.
- B. On EX2, create a new mailbox database. Restore the database files, and then mount the database. Run the Set-Mailbox cmdlet for all of the mailboxes in the database.
- C. On replacement hardware, run setup /mode:recoverserver. Restore the database files, and then mount the database. Run the Set-Mailbox cmdlet.
- D. On replacement hardware, run setup /mode:recoverserver. Restore the database files,

and then mount the database. Run the New-MailboxRestoreRequest cmdlet for all of the mailboxes in the database.

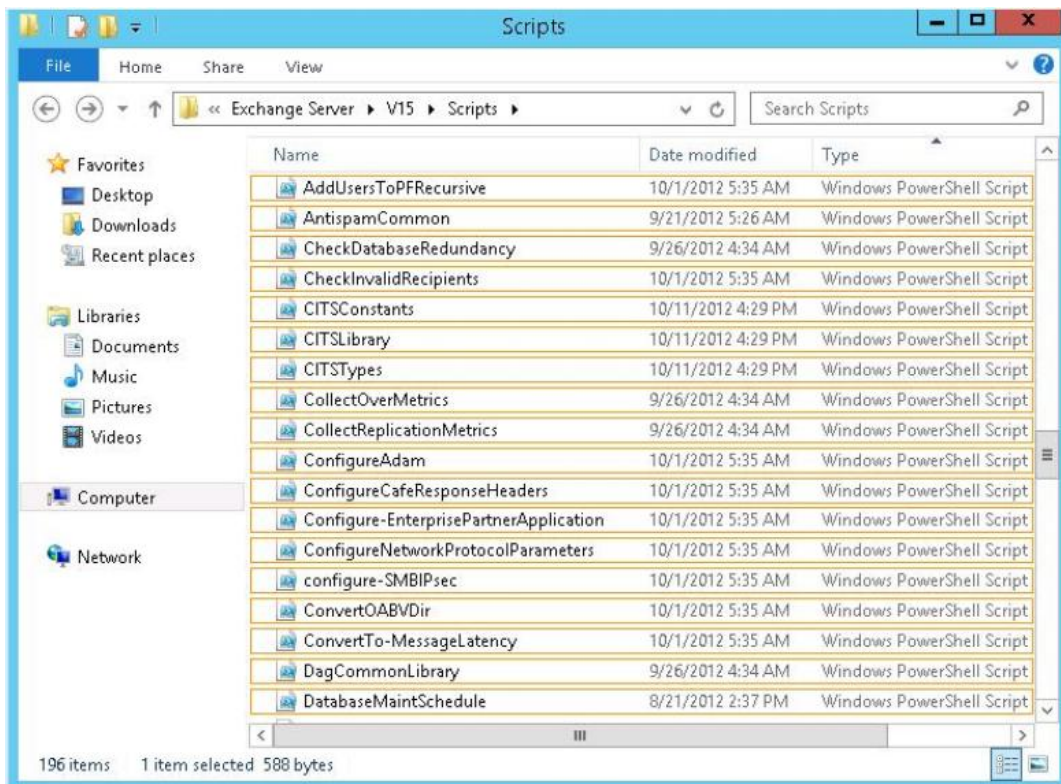
Answer: A

Question No : 6 HOTSPOT - (Topic 1)

You need to recommend which script the administrators must run to create the reports required to meet the technical requirements.

Which script should you recommend?

To answer, select the appropriate script in the answer area.



Answer: