

# Microsoft

## Exam 70-411

### Administering Windows Server 2012

Version: 29.0

[ Total Questions: 249 ]

**Topic break down**

<b>Topic</b>	<b>No. of Questions</b>
<b>Topic 1: Volume A</b>	<b>100</b>
<b>Topic 2: Volume B</b>	<b>149</b>

**Topic 1, Volume A****Question No : 1 - (Topic 1)**

Your network contains an Active Directory domain named contoso.com. The domain contains a member server named Server1. All servers run Windows Server 2012 R2.

You need to collect the error events from all of the servers on Server1. The solution must ensure that when new servers are added to the domain, their error events are collected automatically on Server1.

Which two actions should you perform? (Each correct answer presents part of the solution. Choose two.)

- A. On Server1, create a collector initiated subscription.
- B. On Server1, create a source computer initiated subscription.
- C. From a Group Policy object (GPO), configure the Configure target Subscription Manager setting.
- D. From a Group Policy object (GPO), configure the Configure forwarder resource usage setting.

**Answer: B,C**

**Explanation:**

To set up a Source-Initiated Subscription with Windows Server 2003/2008 so that events of interest from the Security event log of several domain controllers can be forwarded to an administrative workstation.

**\* Group Policy**

The forwarding computer needs to be configured with the address of the server to which the events are forwarded. This can be done with the following group policy setting:

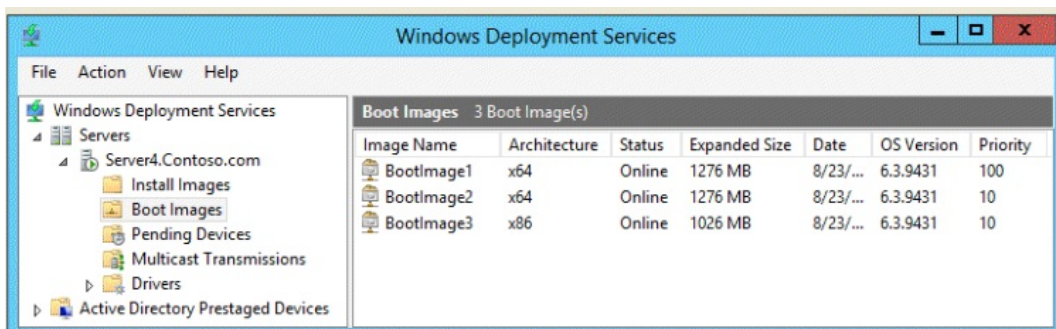
Computer configuration-Administrative templates-Windows components-Event forwarding-Configure the server address, refresh interval, and issue certificate authority of a target subscription manager.

\* Edit the GPO and browse to Computer Configuration | Policies | Administrative Templates | Windows Components | Event Forwarding - Configure the server address, refresh interval, and issuer certificate authority of a target Subscription Manager.

**Question No : 2 HOTSPOT - (Topic 1)**

You have a server named Server4 that runs Windows Server 2012 R2. Server4 has the Windows Deployment Services server role installed.

Server4 is configured as shown in the exhibit. (Click the Exhibit button.)



To answer, complete each statement according to the information presented in the exhibit. Each correct selection is worth one point.

**Answer Area**

When you connect to Windows Deployment Services (WDS) from an x64 client computer, you can select ...

When you connect to Windows Deployment Services (WDS) from an x64 client computer, the default image will be ...

## Answer Area

When you connect to Windows Deployment Services (WDS) from an x64 client computer, you can select ...

When you connect to Windows Deployment Services (WDS) from an x64 client computer, the default image will be ...

## Answer:

## Answer Area

When you connect to Windows Deployment Services (WDS) from an x64 client computer, you can select ...

When you connect to Windows Deployment Services (WDS) from an x64 client computer, the default image will be ...

**Question No : 3 - (Topic 1)**

Your network contains an Active Directory domain named contoso.com. The domain contains client computers that run either Windows XP or Windows 8.

Network Policy Server (NPS) is deployed to the domain.

You plan to create a system health validator (SHV).

You need to identify which policy settings can be applied to all of the computers.

Which three policy settings should you identify? (Each correct answer presents part of the solution. Choose three.)

- A. Antispyware is up to date.
- B. Automatic updating is enabled.
- C. Antivirus is up to date.
- D. A firewall is enabled for all network connections.
- E. An antispyware application is on.

**Answer: B,C,D**

**Explanation:**

The WSHA on NAP client computers running Windows XP SP3 does not monitor the status of antispyware applications.



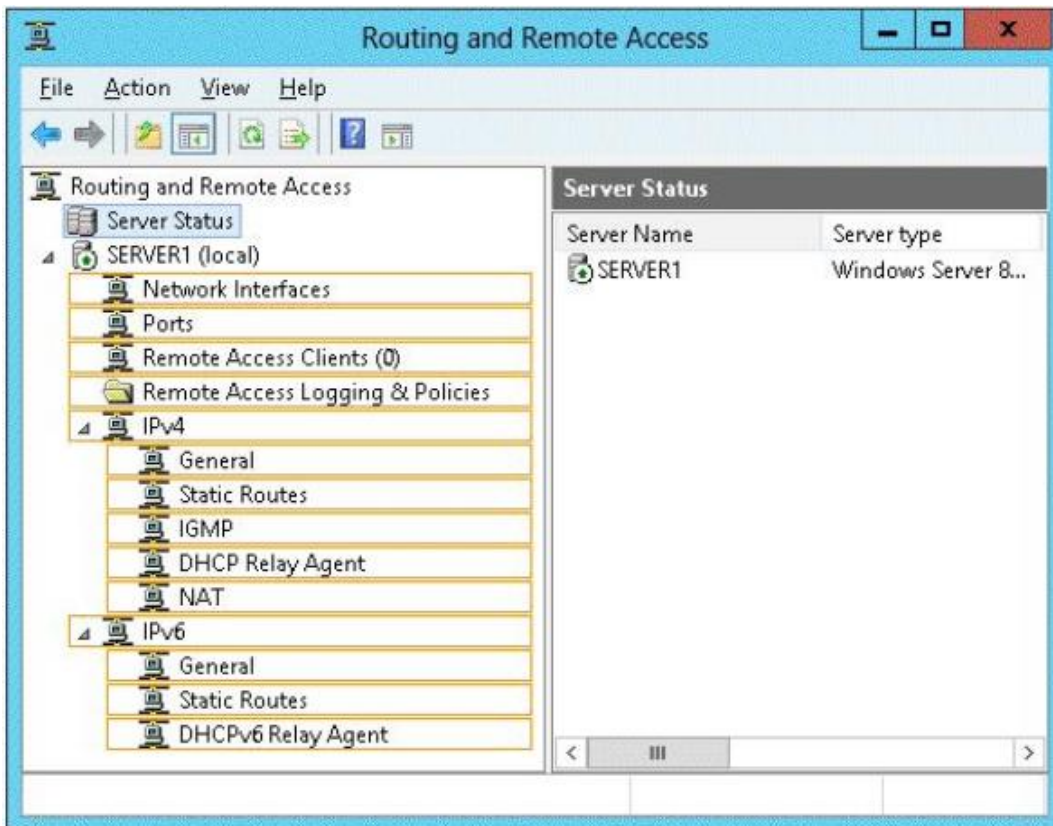
#### Question No : 4 HOTSPOT - (Topic 1)

You have a server named Server1 that runs Windows Server 2012 R2. Server1 has two network adapters and is located in a perimeter network.

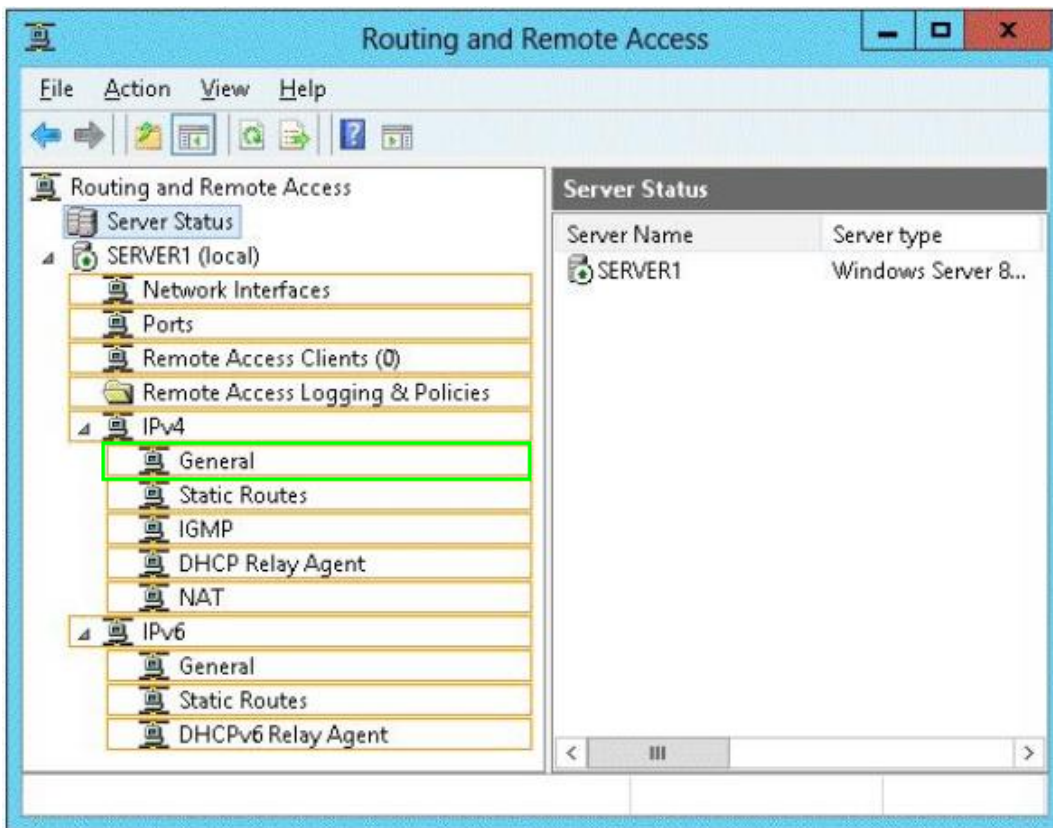
You need to install the RIP version 2 routing protocol on Server1.

Which node should you use to add the RIP version 2 routing protocol?

To answer, select the appropriate node in the answer area.



**Answer:**

**Question No : 5 - (Topic 1)**

You have a server named Server1 that runs Windows Server 2012 R2.

On Server1, you configure a custom Data Collector Set (DCS) named DCS1. DCS1 is configured to store performance log data in C:\Logs.

You need to ensure that the contents of C:\Logs are deleted automatically when the folder reaches 100 MB in size.

What should you configure?

- A. A File Server Resource Manager (FSRM) file screen on the C:\Logs folder
- B. The Data Manager settings of DCS1
- C. A schedule for DCS1
- D. A File Server Resource Manager (FSRM) quota on the C:\Logs folder

**Answer: B**

**Explanation:**



To configure data management for a Data Collector Set

1. In Windows Performance Monitor, expand Data Collector Sets and click User Defined.
2. In the console pane, right-click the name of the Data Collector Set that you want to configure and click Data Manager.
3. On the Data Manager tab, you can accept the default values or make changes according to your data retention policy. See the table below for details on each option.

When Minimum free disk or Maximum folders is selected, previous data will be deleted according to the Resource policy you choose (Delete largest or Delete oldest) when the limit is reached. When Apply policy before the data collector set starts is selected, previous data will be deleted according to your selections before the data collector set creates its next log file.

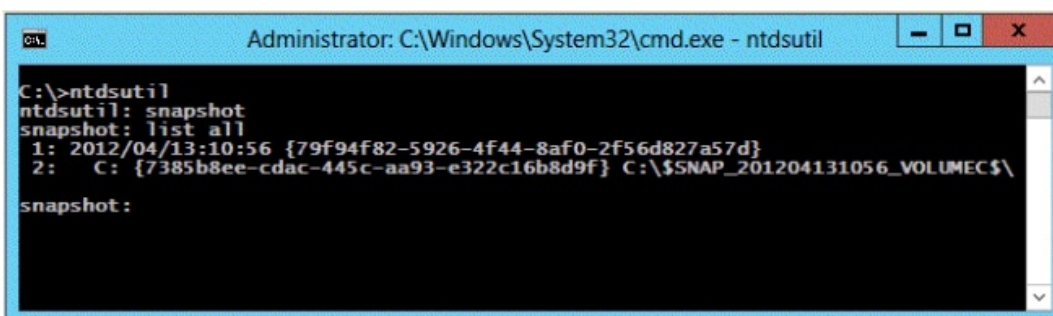
When Maximum root path size is selected, previous data will be deleted according to your selections when the root log folder size limit is reached.

4. Click the Actions tab. You can accept the default values or make changes. See the table below for details on each option.
5. When you have finished making your changes, click OK.

### Question No : 6 - (Topic 1)

Your network contains an Active Directory domain named contoso.com. The domain contains a domain controller named DC1.

You run ntdsutil as shown in the exhibit. (Click the Exhibit button.)



```
Administrator: C:\Windows\System32\cmd.exe - ntdsutil
C:\>ntdsutil
ntdsutil: snapshot
snapshot: list all
1: 2012/04/13:10:56 {79f94f82-5926-4f44-8af0-2f56d827a57d}
2: C: {7385b8ee-cdac-445c-aa93-e322c16b8d9f} C:\$SNAP_201204131056_VOLUMECS\
snapshot:
```

You need to ensure that you can access the contents of the mounted snapshot.

What should you do?

- A. From the snapshot context of ntdsutil, run activate instance "NTDS".
- B. From a command prompt, run dsamain.exe -dbpath c:\\$snap\_201204131056\_volumeec\$\windows\ntds\ntds.dit -ldapport 389.
- C. From the snapshot context of ntdsutil, run mount {79f94f82-5926-4f44-8af0-2f56d827a57d}.
- D. From a command prompt, run dsamain.exe -dbpath c:\\$snap\_201204131056\_volumeec\$\windows\ntds\ntds.dit -ldapport 33389.

**Answer: D**

**Explanation:**

By default, only members of the Domain Admins group and the Enterprise Admins group are allowed to view the snapshots because they contain sensitive AD DS data. If you want to access snapshot data from an old domain or forest that has been deleted, you can allow nonadministrators to access the data when you run Dsamain.exe.

If you plan to view the snapshot data on a domain controller, specify ports that are different from the ports that the domain controller will use.

A client starts an LDAP session by connecting to an LDAP server, called a Directory System Agent (DSA), by default on TCP port and UDP [7] port 389. The client then sends an operation request to the server, and the server sends responses in return. With some exceptions, the client does not need to wait for a response before sending the next request, and the server may send the responses in any order. All information is transmitted using Basic Encoding Rules (BER).