

Microsoft

Exam 70-457

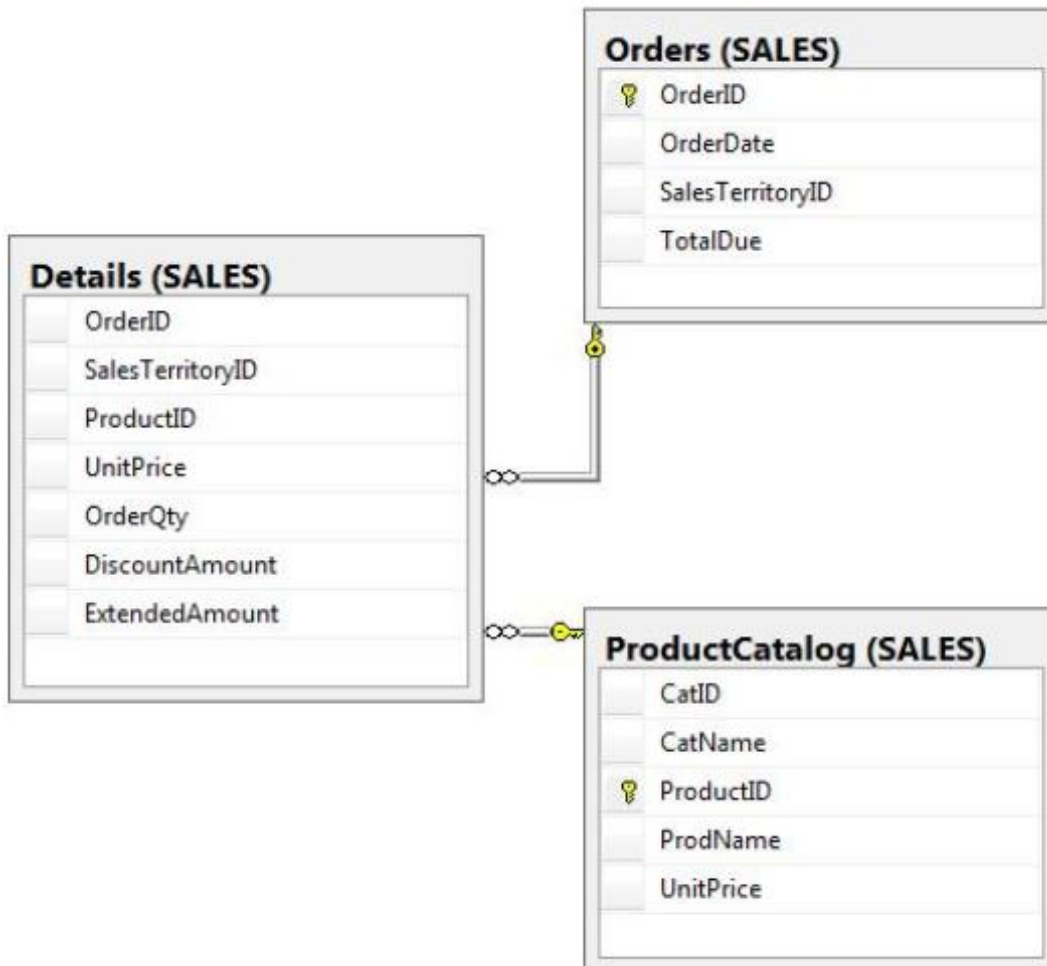
**Transition Your MCTS on SQL Server 2008 to MCSA: SQL Server
2012, Part 1**

Version: 7.8

[Total Questions: 183]

Question No : 1

You have a database that contains the tables shown in the exhibit. (Click the Exhibit button.)



You need to create a query that calculates the total sales of each OrderId from the Sales.Details table.

The solution must meet the following requirements:

- *Use one-part names to reference columns.
- *Start the order of the results from OrderId.
- *NOT depend on the default schema of a user.
- *Use an alias of TotalSales for the calculated ExtendedAmount.
- *Display only the OrderId column and the calculated TotalSales column.

Which code segment should you use?

To answer, type the correct code in the answer area.

- A.** SELECT OrderID, SUM(ExtendedAmount) AS TotalSales
FROM Sales.Details
GROUP BY OrderID
ORDER BY OrderID
- B.** SELECT OrderID, SUM(ExtendedAmount) AS TotalSales
FROM Sales.Details
ORDER BY OrderID

Answer: A

Question No : 2

You develop a Microsoft SQL Server 2012 database that contains a heap named OrdersHistorical. You write the following Transact-SQL query:

```
INSERT INTO OrdersHistorical  
SELECT * FROM CompletedOrders
```

You need to optimize transaction logging and locking for the statement.

Which table hint should you use?

- A.** HOLDLOCK
- B.** ROWLOCK
- C.** XLOCK
- D.** UPDLOCK
- E.** TABLOCK

Answer: E

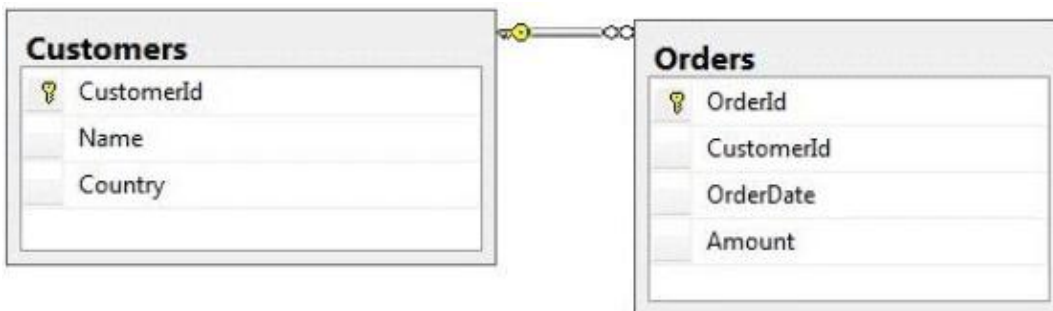
Reference:

<http://technet.microsoft.com/en-us/library/ms189857.aspx>

<http://msdn.microsoft.com/en-us/library/ms187373.aspx>

Question No : 3

You administer a Microsoft SQL Server 2012 database named ContosoDb. Tables are defined as shown in the exhibit. (Click the Exhibit button.)



You need to display rows from the Orders table for the Customers row having the CustomerId value set to 1 in the following XML format.

```
<Customers Name="Customer A" Country="Australia">
  <OrderId>1</OrderId>
  <OrderDate>2000-01-01T00:00:00</OrderDate>
  <Amount>3400.00</Amount>
</Customers>
<Customers Name="Customer A" Country="Australia">
  <OrderId>2</OrderId>
  <OrderDate>2001-01-01T00:00:00</OrderDate>
  <Amount>4300.00</Amount>
</Customers>
```

Which Transact-SQL query should you use?

- A. SELECT OrderId, OrderDate, Amount, Name, Country FROM Orders INNER JOIN Customers ON Orders.CustomerId = Customers.CustomerId WHERE Customers.CustomerId = 1 FOR XML RAW
- B. SELECT OrderId, OrderDate, Amount, Name, Country FROM Orders INNER JOIN Customers ON Orders.CustomerId = Customers.CustomerId WHERE Customers.CustomerId = 1 FOR XML RAW, ELEMENTS
- C. SELECT OrderId, OrderDate, Amount, Name, Country FROM Orders

INNER JOIN Customers ON Orders.CustomerId = Customers.CustomerId
WHERE Customers.CustomerId = 1
FOR XML AUTO

D. SELECT OrderId, OrderDate, Amount, Name, Country FROM Orders
INNER JOIN Customers ON Orders.CustomerId = Customers.CustomerId
WHERE Customers.CustomerId= 1
FOR XML AUTO, ELEMENTS

E. SELECT Name, Country, OrderId, OrderDate, Amount FROM Orders
INNER JOIN Customers ON Orders.CustomerId= Customers.CustomerId
WHERE Customers.CustomerId= 1
FOR XML AUTO

F. SELECT Name, Country, OrderId, OrderDate, Amount FROM Orders
INNER JOIN Customers ON Orders.CustomerId= Customers.CustomerId
WHERE Customers.CustomerId= 1
FOR XML AUTO, ELEMENTS

G. SELECT Name AS '@Name', Country AS '@Country', OrderId, OrderDate, Amount
FROM Orders
INNER JOIN Customers ON Orders.CustomerId= Customers.CustomerId
WHERE Customers.CustomerId= 1
FOR XML PATH ('Customers')

H. SELECT Name AS 'Customers/Name', Country AS 'Customers/Country', OrderId,
OrderDate, Amount FROM Orders
INNER JOIN Customers ON Orders.CustomerId= Customers.CustomerId
WHERE Customers.CustomerId= 1
FOR XML PATH ('Customers')

Answer: G

Question No : 4

You administer all the deployments of Microsoft SQL Server 2012 in your company.

A database contains a large product catalog that is updated periodically.

You need to be able to send the entire product catalog to all branch offices on a monthly basis.

Which configuration should you use?

- A.** • Two servers configured in the same data center
- A primary server configured to perform log-shipping every 10 minutes
- A backup server configured as a warm standby

B • SQL Server that includes an application database configured to perform transactional replication

B. • Two servers configured in the same data center

- SQL Server Availability Group configured in Asynchronous-Commit Availability Mode

- One server configured as an Active Secondary

D • Two servers configured in a Windows Failover Cluster in the same data center

- SQL Server configured as a clustered instance

C. • SQL Server that includes an application database configured to perform snapshot replication

D. • Two servers configured in different data centers

- SQL Server Availability Group configured in Synchronous-Commit Availability Mode

- One server configured as an Active Secondary

E. • Two servers configured on the same subnet

- SQL Server Availability Group configured in Synchronous-Commit Availability Mode

F. • Two servers configured in different data centers

- SQL Server Availability Group configured in Asynchronous-Commit Availability Mode

Answer: E

Reference:

<http://msdn.microsoft.com/en-us/library/ms151832.aspx>

Question No : 5

You use a Microsoft SQL Server 2012 database. You want to create a table to store Microsoft Word documents. You need to ensure that the documents must only be accessible via Transact-SQL queries.

Which Transact-SQL statement should you use?

- A.

```
CREATE TABLE DocumentStore
(
    [Id] [INT] NOT NULL PRIMARY KEY,
    [Document] VARBINARY(MAX) NULL
)
GO
```
- B.

```
CREATE TABLE DocumentStore
(
    [Id] hierarchyid,
    [Document] NVARCHAR NOT NULL
);
GO
```
- C.

```
CREATE TABLE DocumentStore AS FileTable
```
- D.

```
CREATE TABLE DocumentStore
(
    [Id] [uniqueidentifier] ROWGUIDCOL NOT NULL UNIQUE,
    [Document] VARBINARY(MAX) FILESTREAM NULL
)
GO
```

- A. Option A
B. Option B
C. Option C
D. Option D

Answer: A

Reference:

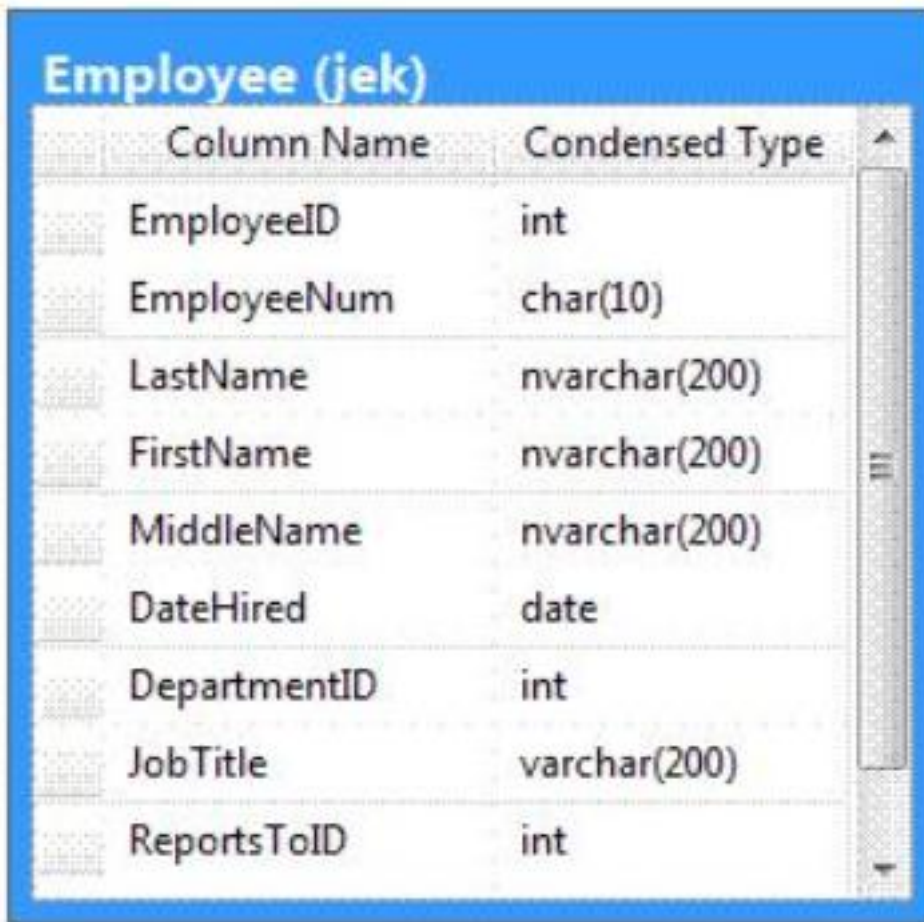
<http://msdn.microsoft.com/en-us/library/gg471497.aspx>

<http://msdn.microsoft.com/en-us/library/ff929144.aspx>

Question No : 6

You administer a Microsoft SQL Server 2012 database.

The database contains a table named Employee. Part of the Employee table is shown in the exhibit. (Click the Exhibit button.)



Column Name	Condensed Type
EmployeeID	int
EmployeeNum	char(10)
LastName	nvarchar(200)
FirstName	nvarchar(200)
MiddleName	nvarchar(200)
DateHired	date
DepartmentID	int
JobTitle	varchar(200)
ReportsToID	int

Column name	Description
EmployeeID	Uniquely identifies the employee record in the table Used throughout the database by all the other tables that reference the Employee table
EmployeeNum	An alphanumeric value calculated according to company requirements Has to be unique within the Employee table Exists only within the Employee table
DepartmentID	References another table named Department that contains data for each department in the company
ReportsToID	Contains the EmployeeID of the manager to whom an employee reports

Confidential information about the employees is stored in a separate table named EmployeeData. One record exists within EmployeeData for each record in the Employee table.

You need to assign the appropriate constraints and table properties to ensure data integrity and visibility.

On which column in the Employee table should you use an identity specification to include a seed of 1,000 and an increment of 1?

- A. DateHired
- B. DepartmentID
- C. EmployeeID
- D. EmployeeNum
- E. FirstName
- F. JobTitle
- G. LastName
- H. MiddleName
- I. ReportsToID

Answer: C

Question No : 7

You develop a Microsoft SQL Server 2012 database. You create a view from the Orders and OrderDetails tables by using the following definition.

```
CREATE VIEW vOrders
WITH SCHEMABINDING
AS
SELECT o.ProductID,
       o.OrderDate,
       SUM(od.UnitPrice * od.OrderQty) AS Amount
FROM OrderDetails AS od INNER JOIN
     Orders AS o ON od.OrderID = o.OrderID
WHERE od.SalesOrderID = o.SalesOrderID
GROUP BY o.OrderDate, o.ProductID
GO
```

You need to ensure that users are able to modify data by using the view.

What should you do?

- A. Create an AFTER trigger on the view.
- B. Modify the view to use the WITH VIEW_METADATA clause.
- C. Create an INSTEAD OF trigger on the view.
- D. Modify the view to an indexed view.

Answer: C

Reference: <http://msdn.microsoft.com/en-us/library/ms187956.aspx>

Question No : 8

You administer a Microsoft SQL Server 2012 database named Contoso on a server named Server01.

You need to prevent users from disabling server audits in Server01.

What should you create?

- A. an Alert
- B. a Resource Pool
- C. an Extended Event session
- D. a Database Audit Specification
- E. a SQL Profiler Trace
- F. a Server Audit Specification
- G. a Policy

Answer: G

Question No : 9

You develop a Microsoft SQL Server 2012 database. You create a view from the Orders and OrderDetails tables by using the following definition.