

# Microsoft

## Exam 70-646

**Pro: Windows Server 2008, Server Administrator**

Version: 70.0

**[ Total Questions: 260 ]**

**Topic break down**

<b>Topic</b>	<b>No. of Questions</b>
<b>Topic 1: Mixed Questions</b>	<b>106</b>
<b>Topic 10: Litware, Inc</b>	<b>7</b>
<b>Topic 11: Fabrikam Inc</b>	<b>7</b>
<b>Topic 12: Nothwind Traders</b>	<b>5</b>
<b>Topic 13: Wingtip Toys</b>	<b>6</b>
<b>Topic 14: Blue Yonder Airlines</b>	<b>7</b>
<b>Topic 15: School of Fine Art</b>	<b>7</b>
<b>Topic 16: Proseware, Inc</b>	<b>7</b>
<b>Topic 17: Trey Research</b>	<b>7</b>
<b>Topic 18: Graphic Design Institute, Case B</b>	<b>10</b>
<b>Topic 19: Tailspin Toys</b>	<b>13</b>
<b>Topic 2: Humongous Insurance</b>	<b>10</b>
<b>Topic 3: Contoso, Ltd.</b>	<b>8</b>
<b>Topic 4: Baldwin Museum of Science</b>	<b>10</b>
<b>Topic 5: Woodgrove Bank</b>	<b>11</b>
<b>Topic 6: City Power &amp; Light</b>	<b>12</b>
<b>Topic 7: Lucerne Publishing</b>	<b>12</b>
<b>Topic 8: A. Datum</b>	<b>8</b>
<b>Topic 9: Graphic Design Institute, Case A</b>	<b>7</b>

**Topic 1, Mixed Questions****Question No : 1 - (Topic 1)**

Your network consists of a single Active Directory domain. Users access and share documents by using a DFS namespace.

You need to recommend a solution to manage user access to documents. The solution must meet the following requirements:

- ✍ Allow for document versioning
- ✍ Allow for online collaboration

What should you recommend?

- A. File Server Resource Manager (FSRM)
- B. Volume Shadow Copy Service (VSS)
- C. Microsoft SharePoint Foundation 2010
- D. Windows System Resource Manager (WSRM)

**Answer: C**

**Explanation:**

sharepoint allows collaboration and versioning

<http://www.plusconsulting.com/WhitePapers/SharePoint%202010%20Business%20Value%20WhitePaper.pdf>

**Question No : 2 DRAG DROP - (Topic 1)**

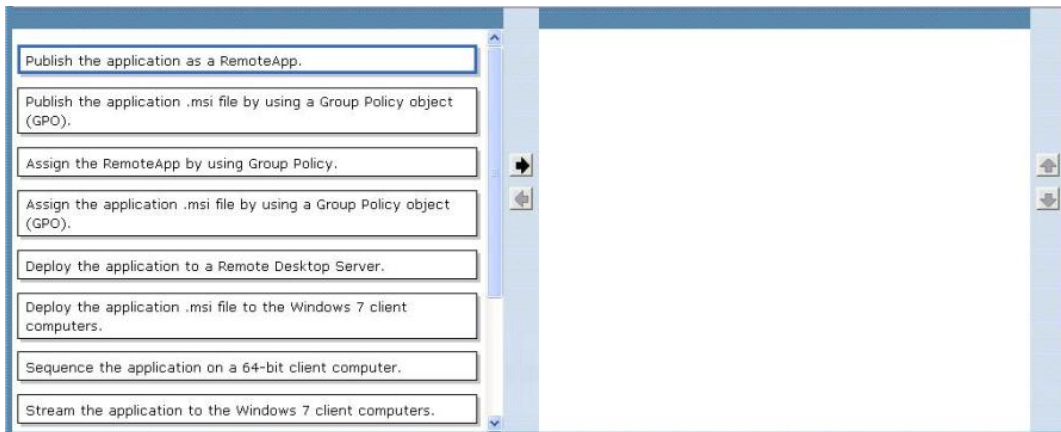
A company has servers that run Windows Server 2008 R2 and client computers that run 32-bit Windows 7 Enterprise. The environment includes Microsoft Application Visualization (App-V).

You plan to deploy a 64-bit only Application.

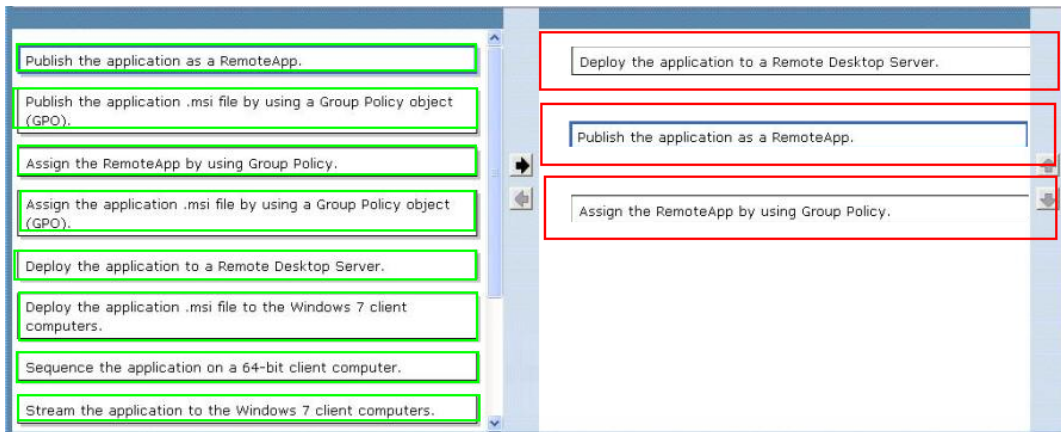
You need to ensure that users can run the Application. The Application must be automatically available on the client computers.

Which actions should you perform in sequence?

To answer, move the appropriate actions from the list of actions to the answer area and arrange them in the correct order. (Use only actions that Apply.)



Answer:



**Question No : 3 DRAG DROP - (Topic 1)**

A company has its main office in New York and branch offices in Miami and Quebec. All sites are connected by reliable WAN links.

You are designing a Windows Server Update Services (WSUS) deployment strategy. The deployment strategy must meet the following requirements:

- ✎* Download updates from Windows Update only in the New York office.
- ✎* Ensure that the update language can be specified for the Quebec office.

You need to design a deployment strategy that meets the requirements.

How should you configure the servers and hierarchy types?

To answer, drag the appropriate server types and hierarchy types from the list to the correct location or locations in the answer area.

Modes	Answer Area				
<table border="1"> <tr> <td>Asynchronous Mode</td> <td>Autonomous Mode</td> </tr> <tr> <td>Replica Mode</td> <td>Synchronous Mode</td> </tr> </table>	Asynchronous Mode	Autonomous Mode	Replica Mode	Synchronous Mode	
Asynchronous Mode	Autonomous Mode				
Replica Mode	Synchronous Mode				
<table border="1"> <tr> <th>Servers</th> </tr> <tr> <td> <table border="1"> <tr> <td>Downstream WSUS Server</td> <td>Upstream WSUS Server</td> </tr> </table> </td> </tr> </table>	Servers	<table border="1"> <tr> <td>Downstream WSUS Server</td> <td>Upstream WSUS Server</td> </tr> </table>	Downstream WSUS Server	Upstream WSUS Server	
Servers					
<table border="1"> <tr> <td>Downstream WSUS Server</td> <td>Upstream WSUS Server</td> </tr> </table>	Downstream WSUS Server	Upstream WSUS Server			
Downstream WSUS Server	Upstream WSUS Server				

Answer:

Modes	Answer Area				
<table border="1"> <tr> <td>Asynchronous Mode</td> <td>Autonomous Mode</td> </tr> <tr> <td>Replica Mode</td> <td>Synchronous Mode</td> </tr> </table>	Asynchronous Mode	Autonomous Mode	Replica Mode	Synchronous Mode	
Asynchronous Mode	Autonomous Mode				
Replica Mode	Synchronous Mode				
<table border="1"> <tr> <th>Servers</th> </tr> <tr> <td> <table border="1"> <tr> <td>Downstream WSUS Server</td> <td>Upstream WSUS Server</td> </tr> </table> </td> </tr> </table>	Servers	<table border="1"> <tr> <td>Downstream WSUS Server</td> <td>Upstream WSUS Server</td> </tr> </table>	Downstream WSUS Server	Upstream WSUS Server	
Servers					
<table border="1"> <tr> <td>Downstream WSUS Server</td> <td>Upstream WSUS Server</td> </tr> </table>	Downstream WSUS Server	Upstream WSUS Server			
Downstream WSUS Server	Upstream WSUS Server				

**Question No : 4 - (Topic 1)**

Your network consists of a single Active Directory domain. All servers run Windows Server 2008 R2. You need to recommend a Group Policy deployment strategy.

Your strategy must support the following requirements:

- ✍ Domainlevel Group Policy objects (GPOs) must not be overwritten by organizational unit (OU) level GPOs.
- ✍ OUlevel GPOs must not Apply to members of the Server Operators group.

What should you recommend?

**A.** Enable Block Inheritance for the domain, and then modify the permissions of all GPOs linked to OUs.

- B. Enable Block Inheritance for the domain, and then enable Loopback Processing policy mode. Add the Server Operators group to the Restricted Groups list.
- C. Set all domain level GPOs to Enforced, and then modify the permissions of the GPOs that are linked to OUs.
- D. Set all domain level GPOs to Enforced, and then enable Loopback Processing policy mode. Add the Server Operators group to the Restricted Groups list.

**Answer: C**

**Explanation:**

[http://www.petri.co.il/working\\_with\\_group\\_policy.htm](http://www.petri.co.il/working_with_group_policy.htm)

<http://technet.microsoft.com/en-us/library/bb742376.aspx>

**GPO behavior**

Group Policy is processed in the following order:

**Local Policy > Site GPO > Domain GPO > OU GPO > Child OU GPO**

and so on.

GPOs inherited from the Active Directory are always stronger than local policy. When you configure a Site policy it is being overridden by Domain policy, and Domain policy is being overridden by OU policy. If there is an OU under the previous OU, its GPO is stronger the previous one.

The rule is simple, as more you get closer to the object that is being configured, the GPO is stronger.

What does it mean "stronger"? If you configure a GPO and linke it to "Organization" OU, and in it you configure Printer installation – allowed and then at the "Dallas" OU you configured other GPO but do not allow printer installation, then the Dallas GPO is more powerful and the computers in it will not allow installation of printers.



The example above is true when you have different GPOs that have similar configuration, configured with opposite settings. When you apply couple of GPOs at different levels and every GPO has its own settings, all settings from all GPOs are merged and inherited by the computers or users.

## Linking a GPO to Multiple Sites, Domains, and OUs

This section demonstrates how you can link a GPO to more than one container (site, domain, or OU) in the Active Directory. Depending on the exact OU configuration, you can use other methods to achieve similar Group Policy effects; for example, you can use security group filtering or you can block inheritance. In some cases, however, those methods do not have the desired affects. Whenever you need to explicitly state which sites, domains, or OUs need the same set of policies, use the method outlined below:

### To link a GPO to multiple sites, domains, and OUs

1. Open the saved MMC console GPWalkthrough, and then double-click the Active Directory User and Computers node.

2. Double-click the reskit.com domain, and double-click the Accounts OU.
3. Right-click the Headquarters OU, select Properties from the context menu, and then click the Group Policy tab.
4. In the Headquarters Properties dialog box, on the Group Policy tab, click New to create a new GPO named Linked Policies.
5. Select the Linked Policies GPO, and click the Edit button.
6. In the Group Policy snap-in, in the User Configuration node, under Administrative Templates node, click Control Panel, and then click Display.
7. On the details pane, click the Disable Changing Wallpaper policy, and then click Enabled in the Disable Changing Wallpaper dialog box and click OK.
8. Click Close to exit the Group Policy snap-in.
9. In the Headquarters Properties page, click Close.

**Next you will link the Linked Policies GPO to another OU.**

1. In the GPWalkthrough console, double-click the Active Directory User and Computers node, double-click the reskit.com domain, and then double-click the Accounts OU.
2. Right-click the Production OU, click Properties on the context menu, and then click the Group Policy tab on the Production Properties dialog box.
3. Click the Add button, or right-click the blank area of the Group Policy objects links list, and select Add on the context menu.
4. In the Add a Group Policy Object Link dialog box, click the down arrow on the Look in box, and select the Accounts.reskit.com OU.
5. Double-click the Headquarters.Accounts.reskit.com OU from the Domains, OUs, and linked Group Policy objects list.
6. Click the Linked Policies GPO, and then click OK.

You have now linked a single GPO to two OUs. Changes made to the GPO in either location result in a change for both OUs. You can test this by changing some policies in the Linked Policies GPO, and then logging onto a client in each of the affected OUs, Headquarters and Production.

**QUESTIONNO: 31**

Your network consists of three Active Directory forests. Forest trust relationships exist between all forests. Each forest contains one domain. All domain controllers run Windows Server 2008 R2.

Your company has three network administrators. Each network administrator manages a forest and the Group Policy objects (GPOs) within that forest.

You need to create standard GPOs that the network administrators in each forest will use.

The GPOs must meet the following requirements:

- ✍ The GPOs must only contain settings for either user configurations or computer configurations.
- ✍ The number of GPOs must be minimized.

Which two actions should you perform? (Each correct answer presents part of the solution. Choose two.)

- A. Export the new GPOs to .cab files. Ensure that the .cab files are available to the network administrator in each forest.
- B. Create two new GPOs. Configure both GPOs to use the required user configurations and the required computer configurations.
- C. Create two new GPOs. Configure one GPO to use the required user configuration. Configure the other GPO to use the required computer configuration.
- D. Back up the Sysvol folder that is located on the domain controller where the new GPOs were created. Provide the backup to the network administrator in each forest.

Answer: A, C

<http://technet.microsoft.com/en-us/library/ee390958.aspx>

[http://www.petri.co.il/working\\_with\\_group\\_policy.htm](http://www.petri.co.il/working_with_group_policy.htm)

### Export a GPO to a File

Applies To: Windows 7, Windows Server 2008, Windows Server 2008 R2

You can export a controlled Group Policy object (GPO) to a CAB file so that you can copy it to a domain in another forest and import the GPO into Advanced Group Policy Management (AGPM) in that domain. For information about how to import GPO settings into a new or existing GPO, see Import a GPO from a File.

A user account with the Editor or AGPM Administrator (Full Control) role or necessary permissions in Advanced Group Policy Management (AGPM) is required to complete this procedure. Review the details in "Additional considerations" in this topic.

### To export a GPO to a file

1. In the Group Policy Management Console tree, click Change Control in the forest and domain in which you want to manage GPOs.
2. On the Contents tab, click the Controlled tab to display the controlled GPOs.
3. Right-click the GPO, and then click Export to.
4. Enter a file name for the file to which you want to export the GPO, and then click Export. If the file does not exist, it is created. If it already exists, it is replaced.

Additional considerations

- By default, you must be an Editor or an AGPM Administrator (Full Control) to perform this procedure. Specifically, you must have List Contents, Read Settings, and Export GPO permissions for the GPO.

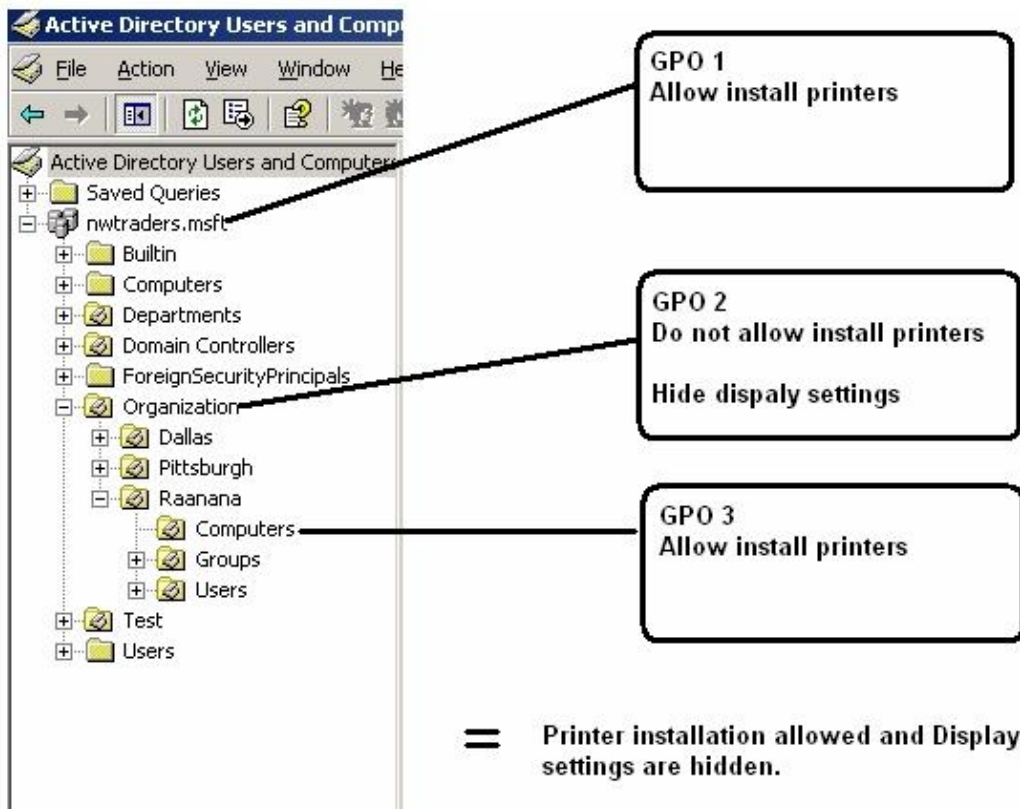
### Group Policy sections

Each GPO is built from 2 sections:

- Computer configuration contains the settings that configure the computer prior to the user logon combo-box.



- User configuration contains the settings that configure the user after the logon. You cannot choose to apply the setting on a single user, all users, including administrator, are affected by the settings.



**Question No : 5 - (Topic 1)**

A network includes servers that run Windows Server 2008 R2 with the Network Policy Server (NPS) server role installed. You are planning to deploy a remote network administration solution.

The remote administration solution must meet the following requirements:

- ✍ Include fault tolerance.
- ✍ Define the users who have remote access and the resources they can remotely access.

You need to design a remote administration solution that meets the requirements.

What should you recommend? (More than one answer choice may achieve the goal. Select the BEST answer.)

- A. Deploy and configure multiple servers with the Remote Desktop Gateway server role. Create a central Remote Desktop Connection Authorization Policy (RD CAP) and a ResourceAuthorization Policy (RD RAP).
- B. Deploy and configure multiple servers with the Remote Desktop Gateway server role. Create a local Remote Desktop Connection Authorization Policy (RD CAP) and a Resource Authorization Policy (RD RAP).
- C. Deploy and configure one server with the Remote Desktop Web Access server role. Create a central Remote Desktop Connection Authorization Policy (RD CAP) and a Resource Authorization Policy (RD RAP).
- D. Deploy and configure one server with the Remote Desktop Web Access server role. Create a local Remote Desktop Connection Authorization Policy (RD CAP) and a Resource Authorization Policy (RD RAP).

**Answer: A**

**Explanation:**

You can also configure RD Gateway to use Remote Desktop connection authorization policies (RD CAPs) that are stored on another server that runs the Network Policy Server (NPS) service. By doing this, you are using the server running NPS, formerly known as a Remote Authentication Dial-In User Service (RADIUS) server, to centralize the storage, management, and validation of RD CAPs. If you have already deployed a server running NPS for remote access scenarios such as VPN and dial-up networking, using the existing server running NPS for RD Gateway scenarios as well can enhance your deployment.

**RAP**

Remote Desktop resource authorization policies (RD RAPs) allow you to specify the internal network resources (computers) that remote users can connect to through an RD Gateway server.

Remote users connecting to the network through an RD Gateway server are granted access to computers on the internal network if they meet the conditions specified in at least one RD CAP and one RD RAP.

**CAP**

Remote Desktop connection authorization policies (RD CAPs) allow you to specify who can connect to an RD Gateway server

**Question No : 6 - (Topic 1)**

Your network contains a single Active Directory domain. You have 100 servers that run Windows Server 2008 R2 and 5,000 client computers that run Windows 7. You plan to deploy Applications to the client computers.