

Microsoft

Exam 70-663

**Pro: Designing and Deploying Messaging Solutions with Microsoft
Exchange Server 2010**

Version: 37.0

[Total Questions: 316]

Topic break down

Topic	No. of Questions
Topic 1: Volume A	60
Topic 2: Volume B	211
Topic 3: Contoso Ltd	14
Topic 4: Fabrikam Inc	11
Topic 5: Litware, Inc	9
Topic 6: A. Datum Corporation	11

Topic 1, Volume A**Question No : 1 - (Topic 1)**

You have an Exchange Server 2010 organization.

Company policy states that a copy of user's mailbox must be kept for one year after the user leaves the company.

All user accounts are in an organizational unit (OU) named OU1.

A compliance administrator plans to export the mailboxes to personal folders.

You need to recommend a solution that allows the compliance administrator to meet the requirements of the company policy.

What should you include in the solution?

- A. a new management role assignment
- B. delegated permissions to OU1
- C. managed folder mailbox policies
- D. new personal Archives

Answer: A

Explanation:

By default, the Mailbox Import Export management role isn't included in any of the built-in role groups, such as the Organization Management role group. To import or export mailbox data, you need to add the Mailbox Import Export management role to a user or a role group

`New-ManagementRoleAssignment -Role "Mailbox Import Export" -User "<username>"`

Another way of doing this is creating an Active Directory group and adding permissions to this group using the following command:

`New-ManagementRoleAssignment -Role "Mailbox Import Export" -Group "<usergroup>"`

When you are done, you will only have to add users to this group to allow them to export and import mailboxes.

Mailbox export request is processed by the Client Access server role. Because multiple Client Access servers can exist in a site the request could be processed by any one of them. To ensure that the path to the export PST file is valid for any Client Access server it has to be a UNC path to network share, not a local path To export a mailbox to PST you

use New-MailboxExportRequest cmd:

```

Machine: EX02.contoso.com
[PS] C:\>New-MailboxExportRequest -Mailbox "ImportHolidays" -FilePath \\EX02\PSI...s\ImportHolidays.pst -IncludeFolders "#Calendar#"
Name                               Mailbox                               Status
----                               -
MailboxExport                       contoso.com/Users/Impor... Queued

[PS] C:\>

```

A management role assignment policy is a collection of one or more end-user management roles that enables end users to manage their own Microsoft Exchange Server 2010 mailbox and distribution group configuration. Role assignment policies, which are part of the Role Based Access Control (RBAC) permissions model in Exchange 2010, enable you to control what specific mailbox and distribution group configuration settings your end users can modify. Different groups of users can have role assignment policies specialized to them. <http://technet.microsoft.com/en-us/library/dd638100.aspx>

Question No : 2 - (Topic 1)

You plan to deploy Exchange Server 2010 on your network.

You plan to deploy the servers configured as shown in the following table.

Hardware	Value
Processor	4-socket x64
RAM	32 GB
Hard disk	16 x 1-terabyte 7200 RPM SATA
Network interface	2 x 10-GB Ethernet

You need to recommend a solution to deploy Mailbox servers.

The solution must meet the following requirements:

- ✎ Maintain redundancy if a single disk fails

- ✍ Maintain redundancy if a single server fails
- ✍ Minimize hardware costs

What should you recommend?

- A. Deploy two Mailbox servers. Configure each server to have a RAID 5 array.
- B. Deploy a two-node Network Load Balancing cluster. Configure each server to have a RAID 5 array.
- C. Deploy a database availability group (DAG) that contains three members. Configure each member to use JDCO
- D. Deploy a three-node Network Load Balancing cluster. Configure each server to connect to a Fiber Channel (FC) Storage Area Network.

Answer: C

Question No : 3 - (Topic 1)

Your company contains an internal network and a perimeter network. The internal network contains an Active Directory forest. The company has a single domain.

You plan to deploy 10 Edge Transport servers on the perimeter network.

You need to recommend a solution for the Edge Transport server deployment. The solution must meet the following requirements:

- ✍ Allow administrators to apply a single security policy to all Edge Transport servers
- ✍ Reduce the Administrative overhead that is required to manage servers
- ✍ Minimize the attack surface of the internal network

What should you recommend?

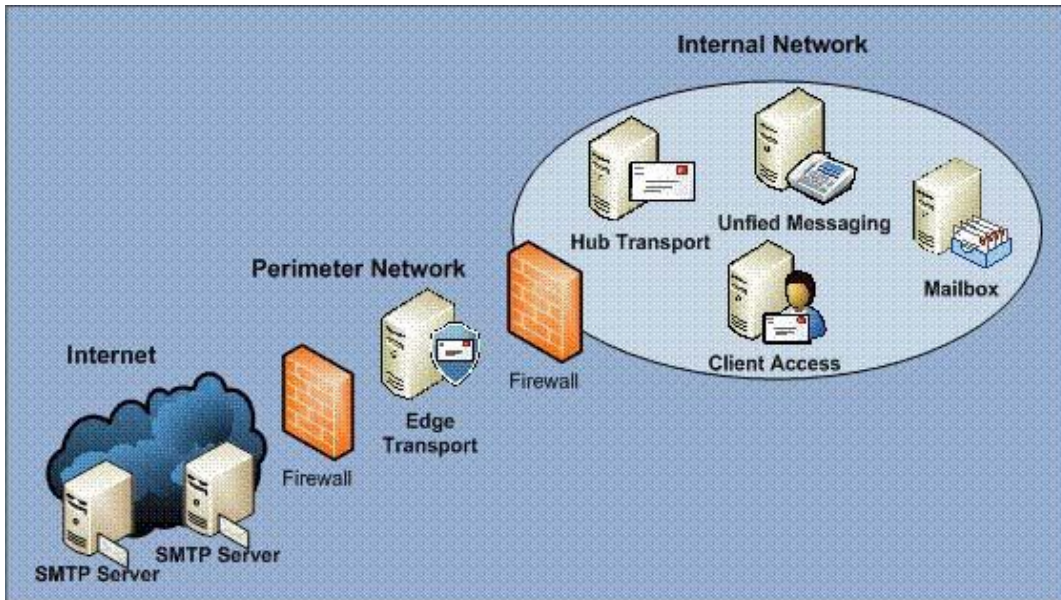
- A. Implement Network Policy and Access Services (NPAS).
- B. Implement Active Directory Federation Services (AD FS).
- C. Create a new Active Directory domain in the internal forest and then join all Edge Transport servers to the new domain.
- D. Create an Active Directory forest in the perimeter network and then join all Edge Transport servers to the new domain.

Answer: D

Explanation:

The Edge Transport Server role in Exchange Server 2007 is designed to be installed in your organization's perimeter network (aka DMZ or screened subnet). The Edge Transport

Server is the only Exchange 2007 server role that should not be part of your corporate Active Directory on your internal network; it should instead be installed on a stand-alone server in a workgroup or as a domain member in an Active Directory dedicated to servers located in the perimeter network as shown in Figure 1.



Although the Edge Transport Server role is isolated from Active Directory on the internal corporate production network, it is still able to communicate with the Active Directory by making use of a collection of processes known as EdgeSync that run on the Hub Transport Server and which, since it is part of the Active Directory, have access to the necessary Active Directory data. The Edge Transport server uses Active Directory Application Mode (ADAM) to store the required Active Directory data, which is data such as Accepted Domains, Recipients, Safe Senders, Send Connectors and a Hub Transport server list (used to generate dynamic connectors so that you do not need to create them manually).

It is important to understand that the EdgeSync replication is encrypted by default, and that the replication is a one-way process from Active Directory to Active Directory Application Mode (ADAM), this means that no data is replicated from ADAM to AD.

The first time EdgeSync replication occurs, the ADAM store is populated, and after that data from Active Directory is replicated at fixed intervals. You can specify the intervals or use the default settings, which when speaking configuration data is every hour and every 4th hour for recipient data.

http://www.msexchange.org/articles_tutorials/exchange-server-2007/planning-architecture/uncoveringexchange-2007-edge-transport-server-part1.html

Question No : 4 - (Topic 1)

You have an Exchange Server 2010 organization.

You plan to deploy a monitoring solution for Exchange Server 2010.

You need to recommend a solution to track the usage of ActiveSync clients and to analyze usage trends.

What should you include in the solution?

- A. Internet Information Server log files
- B. Exchange Server Mail Flow Troubleshooter
- C. Exchange Server Performance Troubleshooter
- D. Microsoft System Control Configuration Manager

Answer: A

Question No : 5 - (Topic 1)

Your company has a main office and two branch offices. Your network consists of a single domain Active Directory forest. An Active Directory exists for each office.

The main office contains five domain controllers that run windows Server 2004 (x64). Each branch office contains one read only domain control (RODC) that runs Windows Server 2008. All domain controllers are configured as global catalog servers.

You plan to deploy one Exchange Server 2010 server in each site.

You need to recommend changes to Active Directory to support the planned deployment. The solution must ensure that Exchange servers branch office site connect to their local domain controllers.

What should you recommend?

- A. Implement a DNS zone for each office.
- B. Change all RODCs to Windows Server 2008 (x64) RODCs.
- C. Implement a writable domain controller in each branch office.
- D. Disable site link bridging for the forest and configure Exchange specific casts.

Answer: C



Explanation:

RODC domain controllers are not considered to be suitable for Exchange Servers. Microsoft documentation states you must have a writable domain controller to support exchange server

Question No : 6 - (Topic 1)

You are the enterprise administrator for an Exchange Server 2010 organization. All users run Microsoft Office Outlook 2010.

You are designing a sharing solution for your organization and a partner organization. The partner organization use Exchange server 2010. You need to recommend a strategy for sharing information with the partner organization to meet the following requirements:

-  Provide cross-organizational access to user contacts
-  Provide cross-organizational access to free/busy information

What should you recommend?

- A. Creating cross forest trusts
- B. Implementing Federated Sharing
- C. Implementing Microsoft Modify LifeCycle Manager (ILM) 2007
- D. Running the Microsoft Exchange Inter-Organization Replication tool

Answer: B

Question No : 7 - (Topic 1)

You have an Exchange Server 2003 organization.

Users access public folders by using Microsoft Office Outlook 2003 and Outlook Web

Access.

You plan to transition the organization to Exchange Server 2010.

You need to ensure that users can access public folders after their mailboxes have been **moved** to Exchange Server 2010.

What should you do?

- A. Enable public folder referrals.
- B. Run the New Organization Relationship wizard.
- C. Create public folder replicas on an Exchange Server 2010 server.
- D. Run the Microsoft Exchange Inter-Organization Application tool from an Exchange Server 2003 server.

Answer: C

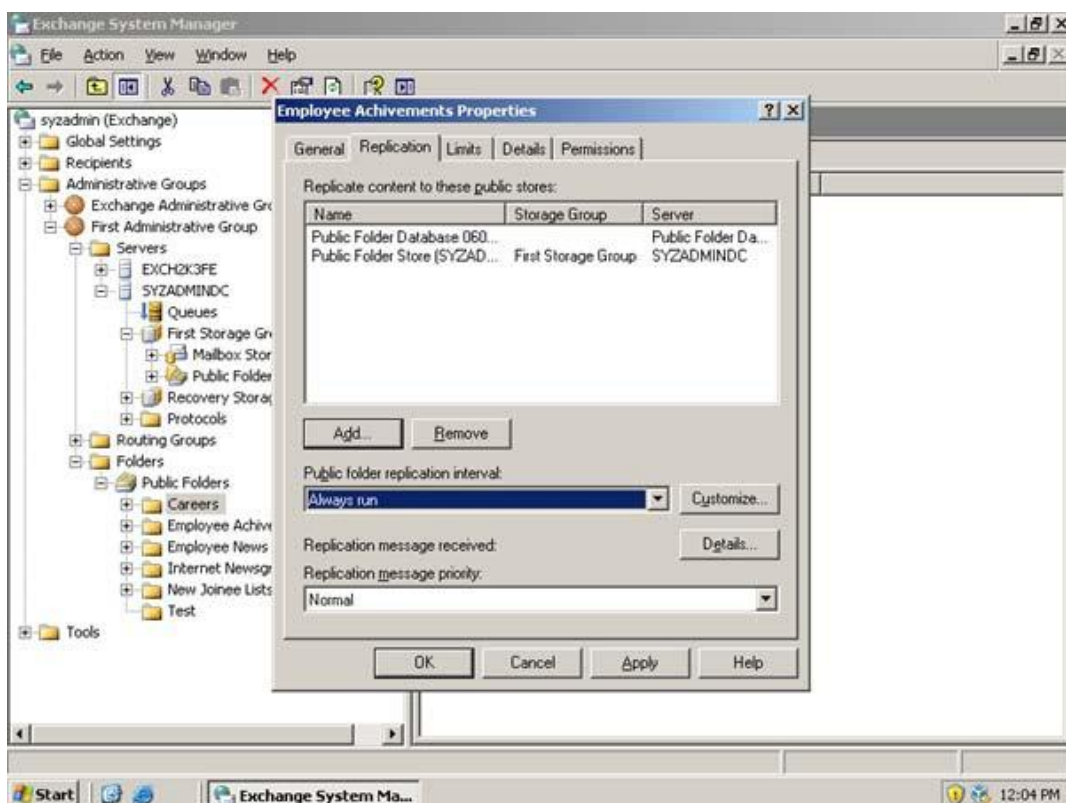
Explanation:

Step 1: Replicating Exchange 2003 PF's to Exchange 2010

To add the Exchange 2010 Public Folder database to the replica list on the Exchange 2003 Server, open the Exchange 2003 System Manager, then expand:

Administrative Groups > First Administrative Group > Folders > Public Folders.

Now open the property page of each public folder, then click the Replication tab and add the Exchange 2010 to the replica list as shown in the inner figure on the above diagram;



Step 2: Moving Exchange 2003 PF's to Exchange 2010

After you confirmed that all the PF have been replicated to the Exchange 2010, you can move all replicas from Exchange 2003 to Exchange 2010.

To move all Exchange 2003 replicas to Exchange 2010, which will actually remove the Exchange 2003 replicas

from the Exchange 2010 server:

```
\MoveAllReplicas.ps1 -Server "Exchange 2003 Server" -NewServer "Exchange 2010 Server"
```

Question No : 8 - (Topic 1)

You have Exchange Server 2003 organization. The organization contains a front end server named FE1 and a back end server accessible from the Internet by using mail.contoso.com.

You plan to transition the organization to Exchange Server 2010. You will deploy a Mailbox server named MIX1 and a Client Access server named CAS1. Users will access Outlook Web Access and Outlook Web App (OWA) by using the URL. <https://mail.contoso.com>.

You need to recommend a DNS configuration for the external name of mail.contoso.com.

Which server should be associated with the name mail.contoso.com?

- A. BE1
- B. CAS1
- C. FE1
- D. MIX1

Answer: B

Explanation:

One of the first steps in transition is to install CAS2010 and point DNS records to it.