

# Microsoft

## Exam 70-692

### Upgrading Your Windows XP Skills to MCSA Windows 8.1

Version: 6.1

[ Total Questions: 76 ]

**Question No : 1**

A company has an Active Directory Domain Services (AD DS) domain. All client computers run Windows 7. You plan to upgrade the client computers to Windows 8.1 Pro.

You need to choose the methods that do not require the manual entry of a product key during the upgrade.

Which two methods should you choose? (Each correct answer presents a complete solution. Choose two.)

- A. Extract the contents of the Windows 8.1 .iso image file to a new shared folder and run the setup program from that folder.
- B. Use the Microsoft Deployment Toolkit.
- C. Use the Windows 8.1 online upgrade tool.
- D. Use Group Policy to assign the Windows 8 installation file to the client computers.

**Answer: A,B**

**Question No : 2 DRAG DROP**

A company has 10 Windows 8.1 client computers. You purchase a Windows Store app and install the app on several computers.

The hard drive of a computer on which the application is installed fails. You reinstall Windows 8.1.

You need to reinstall the Windows Store app on the computer.

Which three actions should you perform in sequence? (To answer, move the appropriate actions from the list of actions to the answer area and arrange them in the correct order.)

Actions	Answer Area
Reinstall the app from the <b>Currently installed programs</b> list.	
Display the <b>Accounts and Preferences</b> page of the Windows Store.	
Open the <b>Programs and Features</b> Control Panel item.	
Log on to the computer with your Microsoft account.	
Display your purchased apps, select the app you need to reinstall, and then click <b>Install</b> .	
Log on to the computer with a local account that has administrative privileges.	

**Answer:**

Actions	Answer Area
Reinstall the app from the <b>Currently installed programs</b> list.	Log on to the computer with your Microsoft account.
Display the <b>Accounts and Preferences</b> page of the Windows Store.	Display the <b>Accounts and Preferences</b> page of the Windows Store.
Open the <b>Programs and Features</b> Control Panel item.	
Log on to the computer with your Microsoft account.	
Display your purchased apps, select the app you need to reinstall, and then click <b>Install</b> .	Display your purchased apps, select the app you need to reinstall, and then click <b>Install</b> .
Log on to the computer with a local account that has administrative privileges.	

**Question No : 3**

You manage computers that run Windows 8.1.

You plan to install a desktop app named MarketingApp on one of the client computers.

You need to display a progress bar to the user while installing the app.

Which command should you run?

- A. `msiexec /i marketingapp.msi /qn`
- B. `msiexec /x marketingapp.msi /qb`
- C. `msiexec /x marketingapp.msi /qn`

D. msixexec /i marketingapp.msi /qb

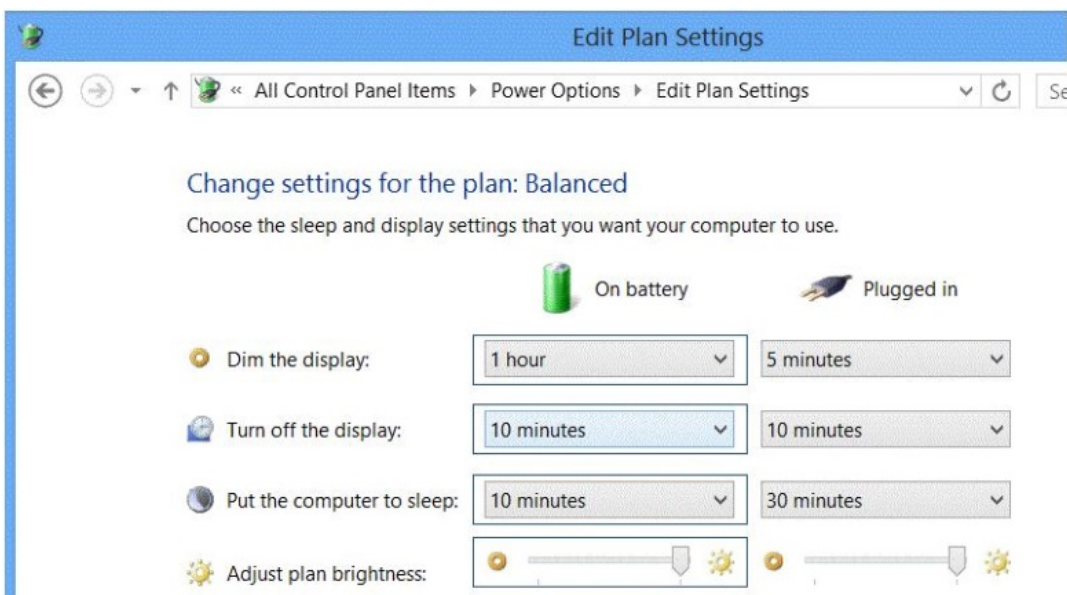
Answer: B

### Question No : 4 HOTSPOT

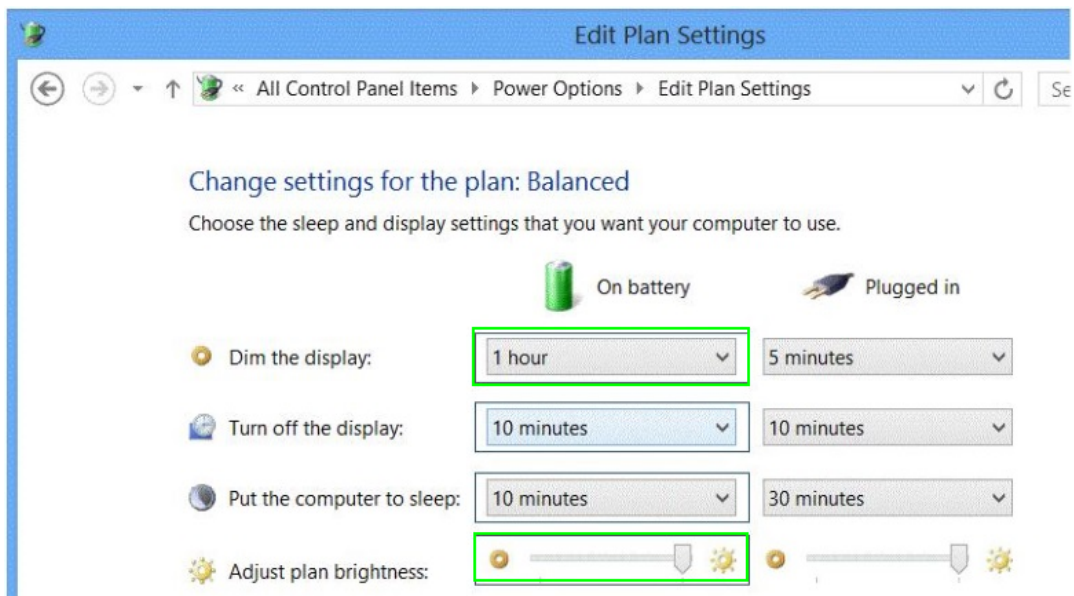
You are a consultant traveling out of town. You are carrying a Windows 8.1 Pro laptop that you use for giving presentations while connected to a projector.

You are concerned about battery life while presenting and need to modify your power settings to maximize battery life without risking interrupting your presentation.

Which two settings do you need to configure to increase battery life without risking interruption to your presentation? (To answer, select the appropriate two settings from the Power Options window in the answer area.)



Answer:

**Question No : 5**

You plan to purchase new Windows 8.1 tablets for your company network.

You need to ensure that tablet users are able to use the Windows 8.1 Snap feature.

Which hardware specifications should you meet in choosing tablets?

- A. Monitor that supports at least five simultaneous touches
- B. Monitor and video adapter that support a minimum screen resolution of 1024 x 768
- C. Monitor and video adapter that support a minimum screen resolution of 1366 x 768
- D. Monitor that supports at least three simultaneous touches

**Answer: D**

**Question No : 6**

You administer Windows 8.1 Enterprise computers in your company's Active Directory Domain Services (AD DS) domain.

Your company uses several peripheral devices. The drivers for these devices are not available on Windows Update.

You need to ensure that the drivers install when users connect these devices to their computers.

What should you do?

- A.** For the Group Policy setting Prioritize all digitally signed drivers equally during the driver ranking and selection process, select Disabled
- B.** For the Group Policy setting Configure driver search locations, select Enabled. Make the drivers available on the UNC path to the driver's share.
- C.** Add the following registry key to the computers:  
HKEY\_LOCAL\_MACHINE/Software/Microsoft/Windows/Current Version/ DevicePath. Add %systemroot%\inf and the UNC path to the drivers share.
- D.** From Device Manager, find the detected scanner device and select Update Driver.

**Answer: C**

**Explanation:** <http://technet.microsoft.com/en-us/library/cc753716.aspx>

Configure Windows to Search Additional Folders for Device Drivers

To configure Windows to Search Additional Folders for Device Drivers

1. Start Registry Editor. Click Start, and in the Start Search box type regedit.
2. If the User Account Control dialog box appears, confirm that the action it displays is what you want, and then click Yes.
3. Navigate to the following registry key:  
HKEY\_LOCAL\_MACHINE/Software/Microsoft/Windows/Current Version
4. In the details pane, double-click DevicePath.
5. Add additional folder paths to the setting, separating each folder path with a semi-colon.

Ensure that

%systemroot%\inf is one of the folders included in the value.

Caution:

Do not remove %systemroot%\inf from the DevicePath registry entry. Removal of that folder can break device driver installation.

Further Information:

<http://msdn.microsoft.com/en-us/library/windows/hardware/ff553973%28v=vs.85%29.aspx>

Where Windows Searches for Drivers

After a device is attached, Windows attempts to locate a matching driver package from which it can install a driver for the device. Windows searches for driver packages from various locations and performs this search in two phases, as described in the following table.

Search phase	Windows Server 2003, Windows XP and Windows 2000	Windows Vista and Windows Server 2008	Windows 7 and later versions of Windows
Without user interaction	DevicePath	Driver store	Windows Update Driver store DevicePath
With user interaction	Prompt for distribution media Windows Update	DevicePath Windows Update Prompt for distribution media	Not applicable

C:\Users\Chaudhry\Desktop\1.jpg

Starting with Windows 7, Windows automatically downloads matching driver packages from Windows Update without prompting the user for permission. If a matching driver package is found, Windows downloads the package and stages it to the driver store.

If a matching driver package cannot be downloaded, Windows searches for matching driver packages in the driver store. This includes in-box drivers, installed drivers other than in-box drivers, and preinstalled drivers.

Windows also searches for driver packages that were preloaded in the locations that are specified by the DevicePath registry value. This value is under the following subkey of the registry.

HKEY\_LOCAL\_MACHINE

Software

Microsoft

Windows

CurrentVersion

By default, the DevicePath value specifies the %SystemRoot%\INF directory.

If a matching driver package is found either on Windows Update or in a location that is specified by the DevicePath value, Windows first stages the driver package to the driver store before the driver is installed. In this way, Windows always installs drivers from the driver store.

### Question No : 7

You support Windows 8.1 Enterprise computers that are members of a workgroup.

Users are able to download and install any app from Windows Store.

You need to ensure that only approved apps can be installed from Windows Store.

What should you do?

- A. Configure a Software Restriction Policy Certificate rule.
- B. Configure an AppLocker Publisher rule.
- C. Enable Windows SmartScreen and select the Get administrator approval before running an unrecognized app from the Internet option.
- D. Configure an AppLocker Packaged app rule.

**Answer: D**

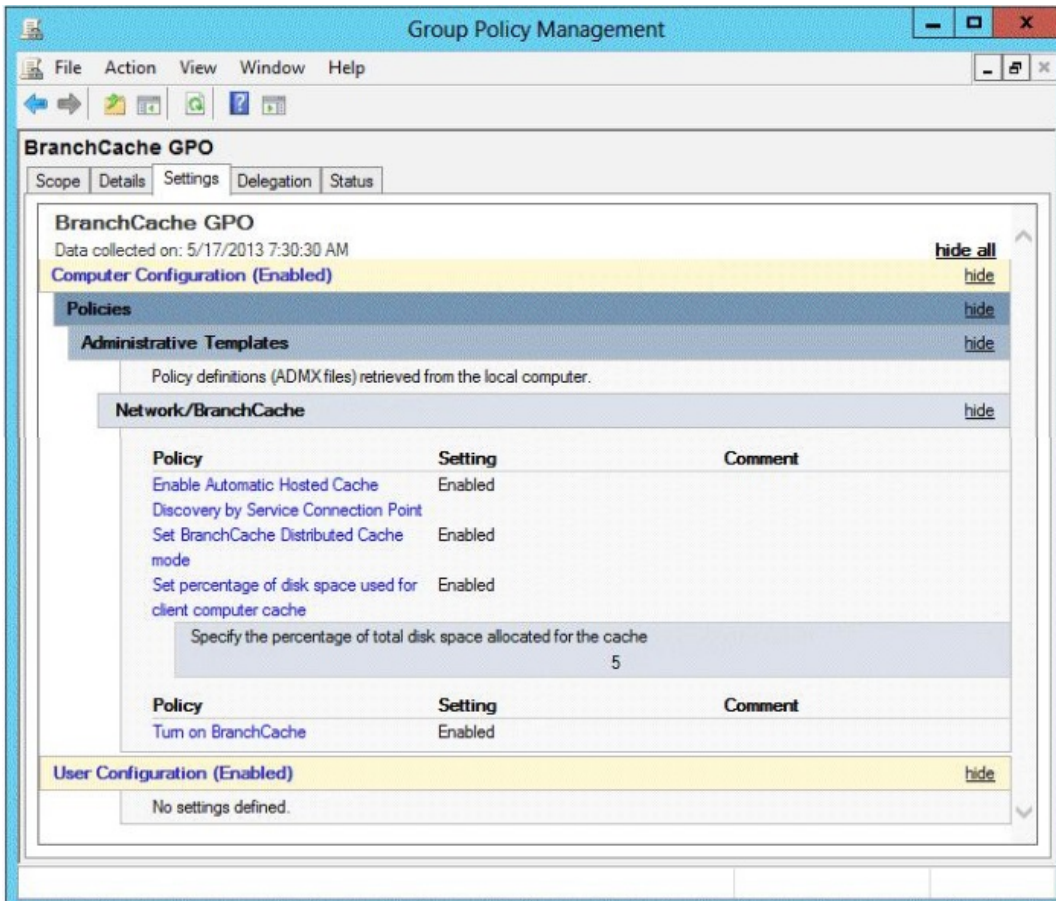
**Question No : 8 HOTSPOT**

Your company has a main office and two branch offices named Branch1 and Branch2. The main office contains a file server named Server1 that has BranchCache enabled. Branch1 contains a server named Server2 that is configured as a hosted cache server.

All client computers run Windows 8.1 Enterprise. All of the computers are joined to an Active Directory domain.

The BranchCache settings of all the computers are configured as shown in the following exhibit. (Click the Exhibit button.)





In the table below, identify the effective setting for the client computers in each branch office. Make one selection in each column. Each correct selection is worth one point.

Effective setting	Branch1 Computers	Branch2 Computers
Will not use BranchCache.	<input type="radio"/>	<input type="radio"/>
Will retrieve cached content from peers.	<input type="radio"/>	<input type="radio"/>
Will retrieve cached content from Server1.	<input type="radio"/>	<input type="radio"/>
Will retrieve cached content from Server2.	<input type="radio"/>	<input type="radio"/>

Answer:

Effective setting	Branch1 Computers	Branch2 Computers
Will not use BranchCache.	<input type="radio"/>	<input checked="" type="radio"/>
Will retrieve cached content from peers.	<input type="radio"/>	<input checked="" type="radio"/>
Will retrieve cached content from Server1.	<input type="radio"/>	<input checked="" type="radio"/>
Will retrieve cached content from Server2.	<input checked="" type="radio"/>	<input type="radio"/>

**Question No : 9**

You administer Windows 8.1 Enterprise computers in an Active Directory domain. Your company has purchased a subscription to Windows Intune.

Users access a Microsoft Exchange environment by using the Mail tile. The Microsoft Exchange environment is connected to Windows Intune. Company security policy defines the minimum length of passwords and required encryption settings.

You need to create a Windows Intune policy that meets the security policy requirements.

What should you do?

- A. Create a new Windows Intune Agent Settings policy.
- B. Create a new Windows Intune Mobile Security policy.
- C. Create a new Windows Firewall Settings policy.
- D. Create a new Windows Intune Center Settings policy.

**Answer: B**

**Question No : 10**

You are a desktop administrator for your organization.

You have a small group of Windows 8.1 computers you want to upgrade to Windows 8.1 Pro.