

Microsoft 74-404

**Microsoft Office Communications Server 2007 R2 –
U.C. Voice Specialization**

Practice Test

Version: 14.21

QUESTION NO: 1

You deploy an Office Communications Server (OCS) 2007 R2 Standard Edition server on the network. All employees in the company use Microsoft office communicator 2007 R2 and Microsoft Office Live Meeting 2007.

Live Meeting users report that slide animations in Microsoft Office PowerPoint 2007 presentations do not display when they upload the presentation files. You need to ensure that slide animations display correctly.

What should you do?

- A.** Request that the users install the Conferencing Add-in for Microsoft Office Outlook.
- B.** Request the users to save the presentation files in the Microsoft Office PowerPoint 97-2003 format.
- C.** From the Meeting policy for the Live Meeting users, select the Enable program and desktop sharing check box.
- D.** From the Meeting policy for the Live Meeting users, select the Use native format for PowerPoint files check box.

Answer: C

Explanation:

QUESTION NO: 2

You have an office communication server 2007 R2 infrastructure that contains an Edge Server named Edge 1. Contoso. local.

The subject name in the Access Edge server role certificate is Sip. Contoso.com.

All users run Microsoft office Communication 2007 R2 to connect to the OCS servers. Some users are configured as remote users. You plan to deploy 10 additional remote users by using office communication manual configurations.

You need to identify the external server name that must be set in office Communicator on the client computers of the remote users.

Which name should you identify?

- A.** Edge 1. Contoso.com:5061

- B. Edge 1. Contoso.local:443
- C. Sip. Contoso.com:443
- D. Sip. Contoso.com:5062

Answer: C

Explanation:

QUESTION NO: 3

Your company has an office communication server (OCS) 2007 R2 infrastructure.

You need to create a response Group work-flow for the help-desk users. Your solution must ensure that each user can sign in and sign out.

Which two actions should you perform?

- A. Create and configure a route.
- B. Create and configure a custom tab for the office communication client.
- C. From the properties of the Response Group group, set the agent participation policy to formal.
- D. From the properties of the response Group group, set the agent participation policy to in formal.

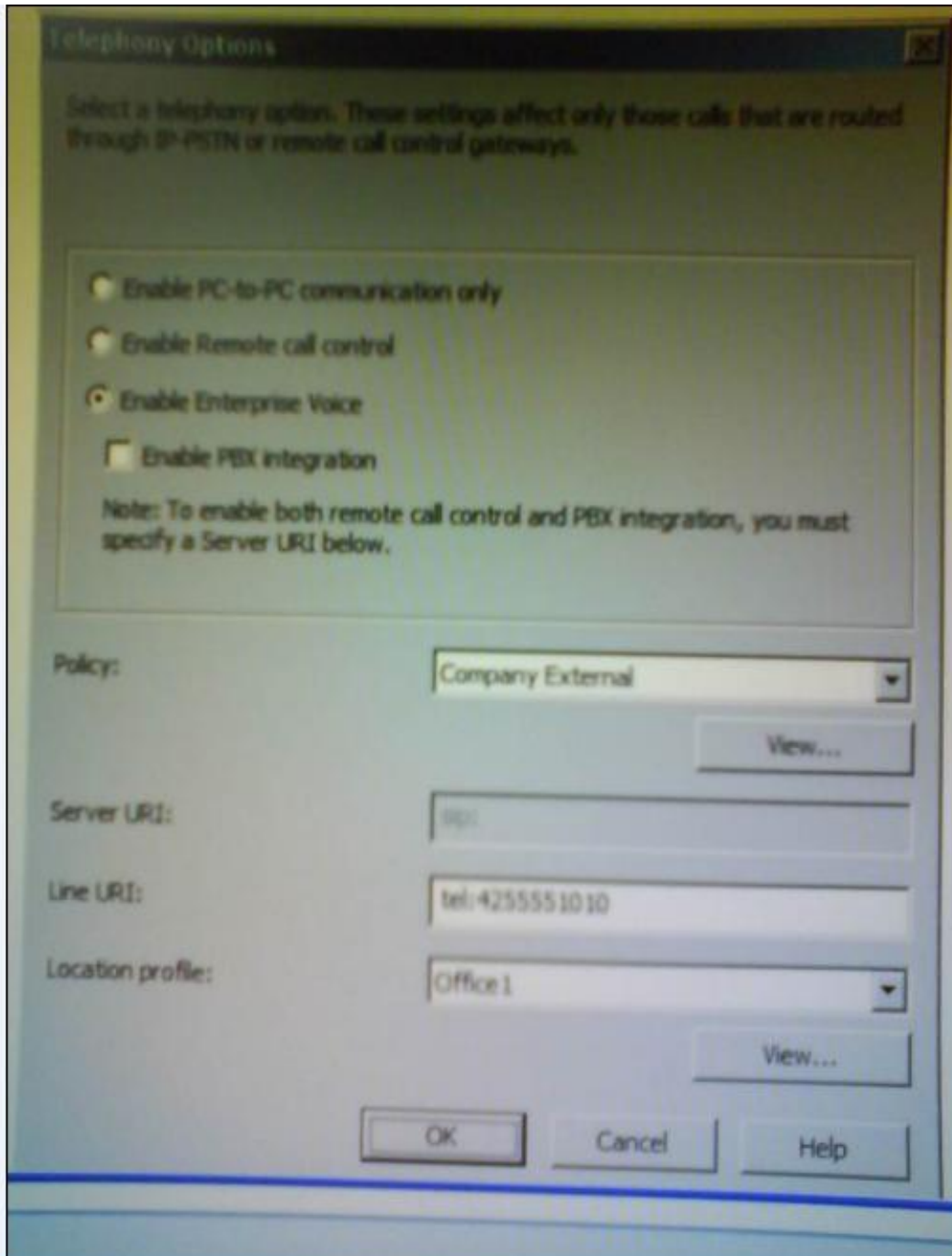
Answer: A,C

Explanation:

QUESTION NO: 4

Your company has office communication Server 2007 R2 deployed and configured to accept voice calls from a PEX.

You need to provide a user with the ability to receive calls from the PSTN by using Microsoft office communication 2007 R2.



What should you do?

- A.** From the user's other options, Select the Enable remote user access, and then select the enable federation check boxes.
- B.** From the user's telephony options, select the Enable Remote call control check box, and then enter SIP address in the server URI box.
- C.** From the users Telephony Options, select the enable remote call control check box, and enter the user's telephone number in the Line URI box.
- D.** From the user's telephony options, select the Enable Enterprise voice check box, and then enter the user's telephone number in the URI.

Answer: D

Explanation:

QUESTION NO: 5

You have an office Communication server (OCS) 2007 R2 infrastructure, all users run Microsoft office communicator 2007 R2. A user named user2 is configured as a delegate for a user name user 1.

You need to ensure that user2 can initiate and receive calls on behalf of user1.

What should you do?

- A. Configure User1 as a delegate of user 2.
- B. Modify the access level for user1 on the computer of user 2.
- C. Install the Microsoft Office Live Meeting client on the computer of user2
- D. Install the OCS 2007 R2 Attendant console on the computer of user2.

Answer: D

Explanation:

QUESTION NO: 6

You have an office communication Server (OCS) 2007 R2 infrastructure that connects to the PSTN.

You plan to deploy dial-in conferencing.

You need to ensure that users can dial in the audio conferences hosted on your OCS servers.

What should you do?

- A. Modify the default meeting policy, and then add an access phone number.
- B. Modify the default meeting policy, and then deploy the Microsoft Outlook Conferencing Add-in.
- C. Create a location profile, and then deploy the Microsoft Outlook Conferencing Add-in.
- D. Create an enterprise voice policy, and then add an access phone number.

Answer: D

Explanation:

QUESTION NO: 7

Your company office communication server (OCS) 2007 R2 infrastructure

A user named user1 reports that she is unable to receive calls from coworkers that are hosted on the PBS. The telephony options settings for User1 are configured as shown in the exhibit.

You need to ensure that user1 can receive calls from, other users that run office communication 2007 R2 or from the PSTN.

What should you do?

- A. Modify the value in the line URI text box.
- B. Select the Enable Remote call control option.
- C. Change the policy option to company internal.
- D. Select the Enable PBX integration check box, and then specify a server URI.

Answer: A

Explanation:

QUESTION NO: 8

You deploy an Office Communications Server (OCS) 2007 R2 Standard Edition server on the network. You need to identify the default audio codec used for audio/video conferencing by using Microsoft Office Communicator 2007 R2.

Which audio codec should you identify?

- A. G.711
- B. G.729
- C. Real-time Audio (RTA)
- D. Siren

Answer: A

Explanation:

QUESTION NO: 9

Your company has office communication server (OCS) 2007 R2 deployed.

You create a new user account named Admin1. You add Admin1 to the built in domain Admins group. You log on to the OCS server as Admin1. You run the Response Group Configuration Tool and see the screen shown in the Exhibit. (Click the Exhibit button.)



You need to ensure that Admin1 can create a new workflow for the Response Group Service.

What should you do?

- A. Add Admin1 to the RTCUniversalUserAdmins security group.
- B. Add Admin1 to the RTCUniversalServerAdmins security group.
- C. Restart the OCS Application Host Service on a Front End Server.
- D. Restart the OCS Response Group Service on a Front End Server.

Answer: B

Explanation:

QUESTION NO: 10

You have an office Communication server (OCS) 2007 R2 infrastructure. All Edge servers use

certificates from an internal route certification authority (CA). You deploy devices that run Microsoft Office Communicator 2007 R2 Phone Edition on the Network. Users report that they are unable to use their devices from home. You verify that all user accounts are enabled for remote for remote access. You need to ensure that the users can use the device from home.

What should you do?

- A. Configure the Edge Servers to be a member of an active Directory domain.
- B. Configure the Edge Servers to use certificates from a public trusted CA.
- C. From the Edge Servers, export the certificate to a PKCS #7 file. Instruct the user to install the certificate.
- D. From the internal root CA, export the certification chain to a PKCS #7 file. Instruct the users to install the certificate chain.

Answer: B

Explanation:

QUESTION NO: 11

You plan to deploy an office communication Servers (OCS) 2007 R2 infrastructure that contains a standard Edition Server and a mediation server. You need to recommend a solution for the planned deployment that meets the following requirements.

Which solution should you recommend?

- A. Create a normalization rule that matches the number pattern $^9(1\d(10))s$ with a transaction of +S1
Assign the location profile containing the rule to all users.
- B. Create a normalization rule that matches the number pattern $^(91\d(10))s$ with a transaction of +S1
Assign the location profile containing the rule to all users.
- C. Create a normalization rule that matches the number pattern $^9(1\d(10))s$ with a transaction of +S1
Assign the location profile containing this rule to the mediation server
- D. Create a normalization rule that matches the number pattern $^(91\d(10))s$ with a transaction of +S1
Assign the location profile containing this rule to the mediation server

Answer: A

Explanation:

QUESTION NO: 12

Your company has single office. You plan to deploy an office communication server (OCS) 2007 R2 infrastructure. You need to recommend an infrastructure to meet the following requirements:

What should you include in your recommendations?

- A. Two Enterprise Edition Front End Servers and single pool
- B. Two Enterprise Edition Front End Servers and two pool
- C. Two standard Edition Front End Servers and two pool
- D. Two standard Edition Front End Servers and single pool

Answer: A

Explanation:

QUESTION NO: 13

You plan to deploy an office Communication Servers (OCS) 2007 R2 web conferencing solution that contains the following components.

You need to recommend change to the existing solution to meet the following requirements:

What should you include in your recommendations?

- A. An additional mediation server and an additional media gateway
- B. Two communicator web Access servers and two hardware load balancers
- C. Two Edge Servers and two hardware load balancers
- D. Two front end Servers in a new pool

Answer: C

Explanation:

QUESTION NO: 14

You have deployed an office communication Server (OCS) 2007 R2 Front End Servers. You plan to deploy a conferencing solution that meets the following requirements:

- Supports audio/video conferencing for internal users and remote users.
- Allows internal users to share their slide content with remote users.

Which additional server or servers roles should you include in the plan?

A. Communicator Web access

Mediation server

B. Edge Servers

Mediation server

C. Communication web access

Microsoft internet security and acceleration (ISA) Servers configured as a reverse proxy.

D. Edge Server

Microsoft internet security and acceleration (ISA) Servers configured as a reverse proxy.

Answer: D

Explanation:

QUESTION NO: 15

Your company has an office Communications Server (OCS) 2007 R2 infrastructure. Your company purchased another company named Litware, Inc. Litware has an OCS 2007 infrastructure. All users in both companies run Microsoft office communicator 2007. You plan to configure a federation between the two companies.

You need to recommend change to the firewall in both companies to ensure in your company can initiate federated office communicator calls to users in Litware.

Which TCP/IP ports should you allow on the firewalls from both companies?

A. UDP 289

TCP 88

TCP 443

B. UDP 3268

UDP 60000-64000

TCP 60000-64000

C. UDP 3478

UDP 50000-59999

TCP 50000-59999

D. UDP 49152-65535

TCP 53

TCP 49152-65535

Answer: C