

Apple

Exam 9L0-402

Support Essentials 10.5

Version: 5.0

[Total Questions: 100]

Topic break down

Topic	No. of Questions
Topic 0: A	100

Topic 0, A

A

Question No : 1 - (Topic 0)

You work as an apple engineer at Pass4sure.com. When a Mac OS X v10.5 computer starts up, which folder contains items that are started by the launchd process?

- A. /var/launchd/
- B. /other/launchd/
- C. /Library/Extensions/
- D. /System/Library/LaunchDaemons/

Answer: D**Question No : 2 - (Topic 0)**

In Mac OS X v10.5, which of the following points out a potential privacy issue regarding the default configuration of Spotlight ?

- A. The Spotlight index folder is readable by all users, and can be accessed from the command line.
- B. The Spotlight search results window allows users to view other local users Safari bookmarks.
- C. By default, the Spotlight search results window shows found documents that reside on external drives, even if the drive was NOT connected by the user performing the search.
- D. By default, the Spotlight search results window shows found documents that reside inside other users home folders, even if the user performing the search does NOT have permissions to view the documents.

Answer: C**Question No : 3 - (Topic 0)**

You work as an apple network administrator at Pass4sure Company. You manage a Mac OS X v10.5 computer which is connected to both an Ethernet and an AirPort network. Then how do you define which interface the computer will use to access the Internet?

- A. You have to connect one interface with Internet Connect to activate that interface for Internet access.
- B. You have to assign a public IP address to one interface to activate that interface for

Internet access.

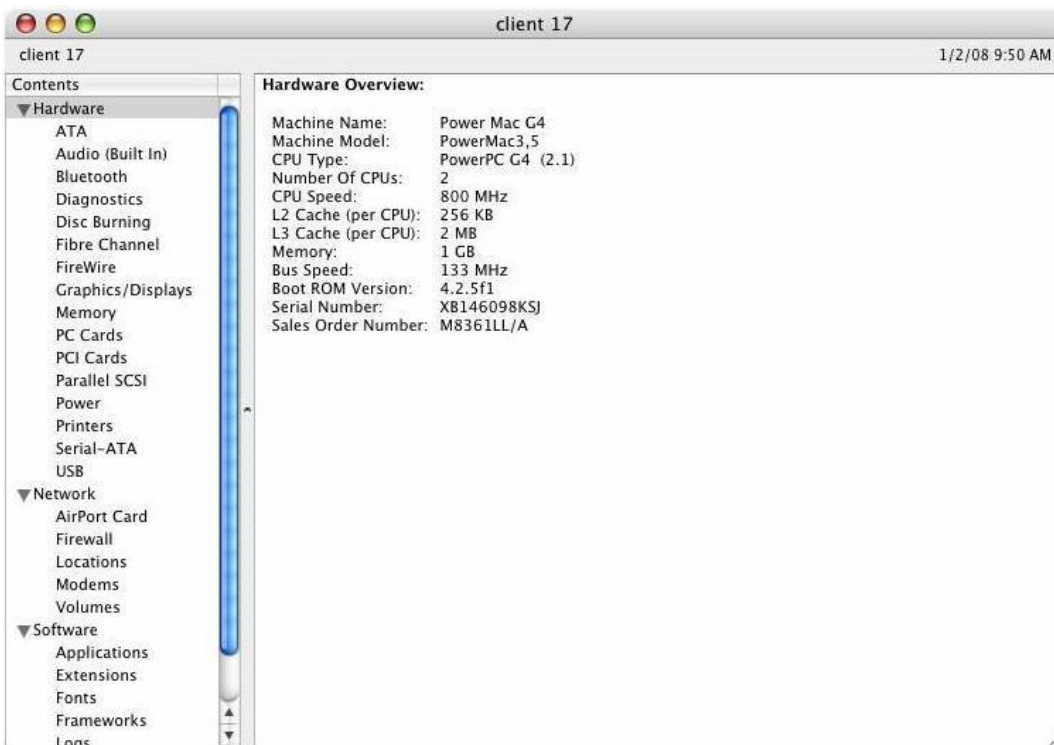
C. You have to enter a DNS configuration for one interface to activate that interface for Internet access.

D. You have to move an interface to the top of the service priority list to activate that interface for Internet access.

Answer: D

Question No : 4 - (Topic 0)

Base on the following exhibit of the Apple System Profiler report for a computer that has Mac OS X v10.4 installed, what aspect of the computers current configuration prohibits installation of Mac OS X v10.5?



A. Its CPU speed is too slow.

B. Its bus speed is too slow.

C. Its CPU type is not supported.

D. It has insufficient random access memory installed.

Answer: A

Question No : 5 - (Topic 0)

You work as an apple engineer at Pass4sure.com. You are using a Mac OS X v10.5 computer, then which two of the following statements are true of file and folder permissions in the Finder in Mac OS X v10.5?

- A. A user with Read only permissions to a folder cannot view any files in that folder.
- B. A user with Write only permissions to a folder can rename any file in that folder.
- C. A user with Write only permissions to a folder cannot view any files in that folder.
- D. A user with Read only permissions to a folder cannot rename any files in that folder.

Answer: C,D

Question No : 6 - (Topic 0)

You work as an apple engineer at Pass4sure.com. You are managing a Mac OS X v10.5 computer, but now web pages will not load on your computer. Then which three troubleshooting steps will help you find out the cause?

- A. Verify network settings in Network preferences.
- B. Confirm network connectivity using Network Diagnostics.
- C. Confirm network connectivity using Internet Connect.
- D. Test direct IP connectivity using Network Utility's Ping command.
- E. Verify the presence of DNS servers on the network using Network Utility's DNS Scan command.

Answer: A,B,D

Question No : 7 - (Topic 0)

You work as an apple engineer at Pass4sure.com. Base on your experience, which of the following description is correct about Kerberos?

- A. Kerberos requires service discovery.
- B. Kerberos supports single sign-on.
- C. Kerberos requires Lightweight Directory Access Protocol.
- D. Kerberos sends your user name and password to each server you access.

Answer: B

Question No : 8 - (Topic 0)

You work as an apple network administrator at Pass4sure Company. A new user cannot access his login keychain when he logs into his computer. What is the problem?

- A.** The user changed his account password using Accounts preferences in a previous login session.
- B.** The user removed Keychain Access from his login items in a previous login session.
- C.** The user enabled FileVault on his account, and then changed his account password using Accounts preferences in a previous login session.
- D.** Prior to the current login session, the user changed his account password using the Reset Password utility on the Mac OS X v10.5 Install DVD.

Answer: D

Question No : 9 - (Topic 0)

You work as an apple network administrator at Pass4sure Company. Which two reasons you might choose to store user accounts on a directory server?

- A.** So that the admin user can implement Windows-style hashes for SMB/CIFS file sharing; hashes are supported for directory accounts, but not for local accounts.
- B.** So that the admin user can manage user accounts centrally on the directory server, rather than individually on each client workstation.
- C.** So that users can access a variety of services using the same account credentials.
- D.** So that the admin user can use parental controls to manage users; parental controls restrictions can only be implemented on accounts stored on a directory server.

Answer: B,C

Question No : 10 - (Topic 0)

You work as an apple engineer at Pass4sure.com. You are using a Mac OS X v10.5 computer, how does Boot Camp allow you to run Windows applications on it?

- A.** Boot Camp installs Windows libraries on the Mac OS X disk partition, then uses the installed Windows libraries to allow Mac OS X v10.5 to run Windows applications without booting from Windows.
- B.** Boot Camp lets you restart your Mac OS X v10.5 computer into Windows from a hard disk partition that has Windows installed.
- C.** Boot Camp installs Windows on a disk image, then starts up Windows in a virtual environment running inside Mac OS X v10.5.
- D.** Boot Camp installs Windows on the startup disk, then uses the installed Windows libraries to run Windows applications while the computer is booted from Mac OS X v10.5.

Answer: B

Question No : 11 - (Topic 0)

You work as an apple engineer at Pass4sure.com. What is a benefit of protected memory?

- A. Data in memory used by running applications is encrypted.
- B. Applications that crash have the data in memory saved to a new file.
- C. Applications that crash automatically save open files.
- D. Applications that crash do not adversely affect other running applications.

Answer: D

Question No : 12 - (Topic 0)

You work as an apple network administrator at Pass4sure Company. And you are using a forecasting application, Crystal Ball, on your Mac OS X v10.5 computer, when you see the alert dialog shown as the following exhibit. If you click Reset and relaunch, what will happen?



- A. The applications preferences file is deleted and the application is relaunched with reduced privileges, and a new preferences file is created.
- B. The applications preferences file is renamed, the application is relaunched, and a new preferences file is created.
- C. The applications preferences file is deleted and the application is relaunched, and a new preferences file is created.
- D. The applications preferences file is unchanged and the application is relaunched, and a new preferences file is saved in a new location.

Answer: B

Question No : 13 - (Topic 0)

You work as an apple network administrator at Pass4sure Company. Time Machine backed up a new, 5 MB spreadsheet file once, and the file has been edited to 6 MB since then. When you check the file, you find it is about to be backed up by Time Machine again. DO you know how will Time Machine carry on this backup?

- A.** Time Machine will designate the 1 MB of file changes, copy those changes to a new file on the backup drive, and keep both the new backup file and the original backup file.
- B.** Time Machine will copy the 6 MB file to the backup drive, and keep both the new backup file and the original backup file on the backup drive.
- C.** Time Machine will copy the 6 MB file to the backup drive, and delete the original backup copy of the file from the backup drive.
- D.** Time Machine will identify the 1 MB of file changes, copy those changes to a new file on the backup drive, then create a 500 KB parity file, and keep all three files: the two new files representing the 1 MB of file changes, and the original backup file.

Answer: B

Question No : 14 - (Topic 0)

You work as an apple engineer at Pass4sure.com. When you choose Shut Down from the Apple menu of your computer, what process quits all of open applications you started and tells the kernel to power down the computer?

- A.** init
- B.** launchd
- C.** kernel_task
- D.** loginwindow

Answer: D

Question No : 15 - (Topic 0)

You work as an apple network administrator at Pass4sure Company. You have enabled the Ignore Volume Ownership option for an external FireWire hard disk. Then if a standard user attempts to mount the disk, what will happen?

- A.** The disk will mount, and the user will be able to read, modify, and delete any file on the disk.
- B.** The user will be required to enter an administrator password to mount the disk; once the