

# Apple

## Exam 9L0-410

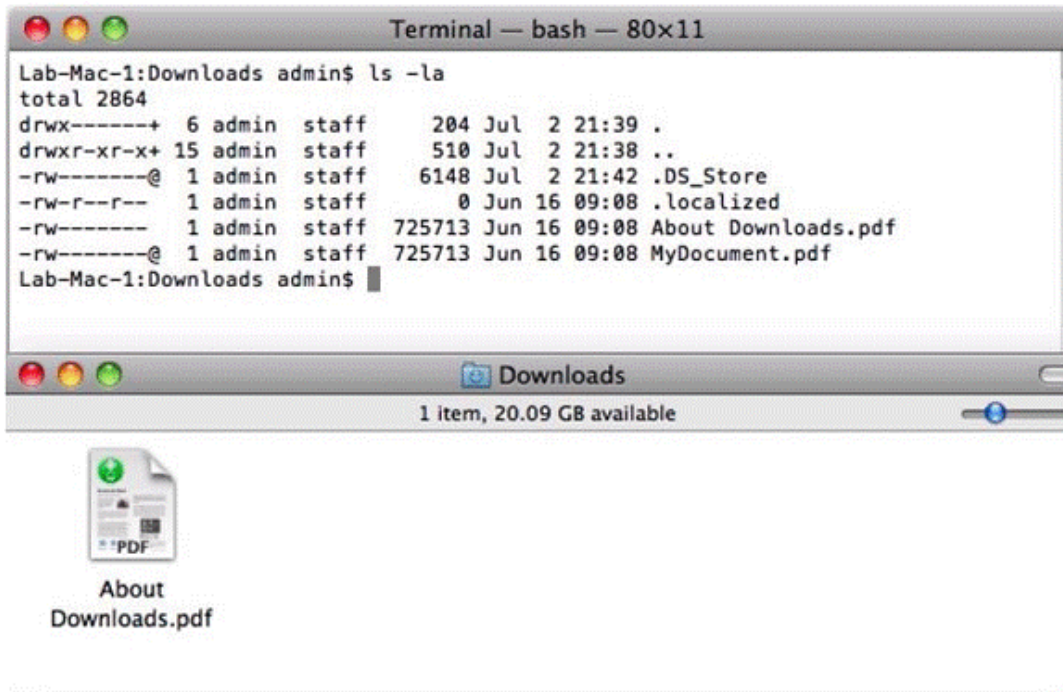
### Mac OS X Support Essentials 10.7

Version: 5.0

[ Total Questions: 122 ]

**Question No : 1**

Review the two screenshots of the contents of the /Users/admin/Downloads/ folder, and then answer the question below.



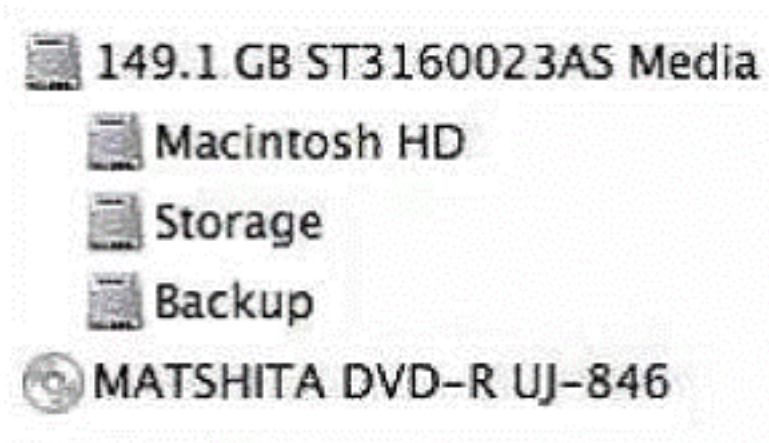
Which statement describes why the file "MyDocument.pdf" is displayed in Terminal but not in the Finder?

- A. The file's sticky bit is enabled.
- B. The file's hidden flag is enabled.
- C. The file is stored in an aliased location.
- D. The file has an active access control list.

**Answer: B**

**Question No : 2**

Review the screenshot of a portion of the Disk Utility application window, and then answer the question below.



Which statement best describes the "149.1 GB ST3160023AS Media" item that appears in the screenshot above?

- A. It is a volume with three partitions.
- B. It is a hard disk with three partitions.
- C. It is a partition with three file systems.
- D. It is a RAID set made from three hard disks.

**Answer: B**

### Question No : 3

Which three issues can occur when multiple users are logged via fast user switching?

Choose three.

- A. Peripherals in use by one user's application may be inaccessible to other users.
- B. Some applications may run out of memory due to the number of processes running.
- C. iTunes libraries cannot be shared between users who are logged at the same time.
- D. Some applications may fail to open for one user if they are already open in another user's account.
- E. Access to some services may be granted inappropriately to users who log in after certificates have been validated.
- F. Changes to documents that are open in multiple users account may not be able to be saved by some of the users.
- G. Display resolution preferences may conflict, and cause resolution not to change appropriately when new users log in.

**Answer: A,D,F**

**Question No : 4**

Which items in a Mac OS X v10.7 file system are accessible to any guest user who connects to the computer via SMB?

- A. The contents of /System/
- B. The contents of /Users/Shared/
- C. The home folder of all standard users on the system
- D. The Public folder of all standard and admin users on the system
- E. The Drop Box folder of all standard and admin users on the system

**Answer: D**

**Question No : 5**

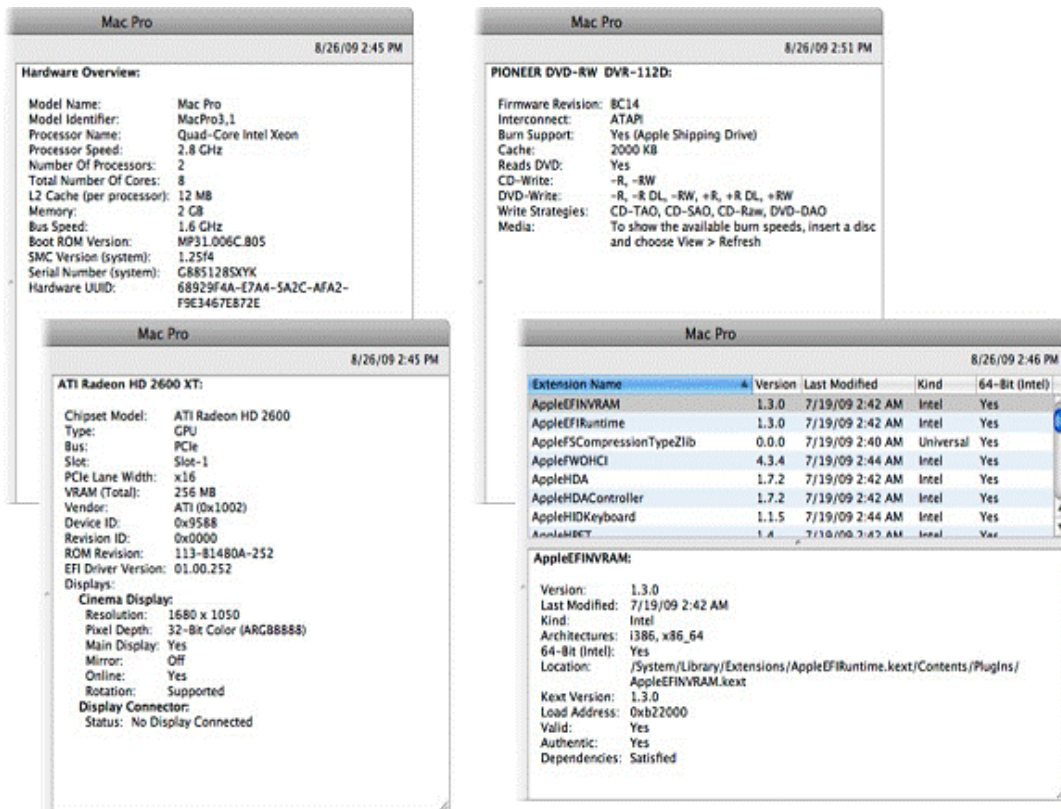
Tom wants to share a document with Gill. Both have standard user accounts on the same Mac OS X v10.7 computer. Which of these is NOT a location where Tom can store the document so that Gill can read it?

- A. /Users/Shared/
- B. /Users/tom/Public/
- C. /Users/gill/Public/
- D. /Users/gill/Public/Drop Box/

**Answer: C**

**Question No : 6**

Review the four Apple System Profiler screenshots from a single Mac OS X v10.7 computer, and then answer the question below.



What version of EFI firmware is installed on the computer whose profile is shown above?

- A. MP31.006C.B05
- B. 1.25f4
- C. 68929F4A-E7A4-5A2C-AFA2-F9E3467E872E
- D. 01.00.252
- E. BC14
- F. 1.3.0

**Answer: A**

### Question No : 7

Which statement presents a benefit of protected memory?

- A. Applications that crash automatically save open files.
- B. Data in memory used by running applications is encrypted.
- C. Applications that crash have the data in memory saved to a new file.
- D. Applications that crash do not adversely affect other running applications.

**Answer: D**

**Question No : 8**

Which process will let you start up a computer in target disk mode?

- A.** Start up the computer from the Mac OS X Install DVD, then choose Target Disk Mode from the Utilities menu.
- B.** Hold down the S key on the keyboard while the computer starts up, then type the command `reboot -target`.
- C.** Hold down the T key on the keyboard while the computer starts up, until a FireWire icon appears on the screen.
- D.** Hold down the Option key on the keyboard while the computer starts up, until a dialog appears, then select Target Disk Mode from the dialog.

**Answer: C**

**Question No : 9**

You are about to install Mac OS X v10.7 on a computer whose hard disk is formatted as a single volume. Which statement presents a rational motivation for repartitioning the disk into multiple volumes before performing the installation?

- A.** You want to manually specify volume block size.
- B.** You want to avoid using a dedicated swap file system.
- C.** You want to create a RAID 5 volume that includes the internal hard disk.
- D.** You want to run both Mac OS X v10.7 and Mac OS X v10.6 on the computer.

**Answer: D**

**Question No : 10**

How do you reset the Mac OS X v10.7 printing system?

- A.** Navigate to `/Library/Printers/` in the Finder, select all items, and move them to the Trash.
- B.** Open Printer Setup Utility and choose Reset Printing System from the Printer Setup Utility menu.
- C.** Control-click in the Printers list of the Print & Fax preferences, then choose Reset

printing system.

**D.** Open System Preferences, Option-click the Print & Fax preferences icon, and click Reset in the dialog that appears.

**Answer: C**

**Question No : 11**

You have restarted a computer from the Mac OS X v10.7 Install DVD in order to repair its hard disk. Which procedure below will let you perform the repair?

**A.** Advance to the volume selection pane in the Installer, select the hard disk, and click Verify & Repair.

**B.** Quit the Installer, then open Disk Utility from the /Applications/Utilities/ folder on the DVD, select the hard disk, and click Repair Disk.

**C.** Without quitting the Installer, open Disk Utility from the Utilities menu in the Installer application, select the hard disk, and click Repair Disk.

**D.** Quit the Installer, then open Disk Utility from the /Applications/Utilities/ folder on the computer's hard disk, select the hard disk, and click Repair Disk.

**Answer: C**

**Question No : 12**

How does Time Machine store the data from a Mac OS X v10.7 computer, when backing up to a directly connected FireWire hard disk?

**A.** Each file is copied to a folder.

**B.** Each file is copied to a disk image.

**C.** Each file is stored as a record in a database.

**D.** Data from each backup is appended to a CPIO archive.

**Answer: A**

**Question No : 13**

Review the screenshot, and then answer the question below.



You are starting up an Intel-based Mac OS X computer, and see the screen shown above. What does it mean?

- A. The system's firmware cannot locate a valid booter file.
- B. The system has detected an unmountable Boot Camp partition.
- C. Invalid startup modifier keys are being pressed on the keyboard.
- D. The folder that holds all the user home folders cannot be located or accessed.

**Answer: A**

---

**Question No : 14**

Review the screenshots of the My Account pane of Accounts preferences, and a Finder window, and then answer the question below.





A Mac OS X v10.7 computer has three local users configured as shown above. Bill Sykes has lost the password to his account. Which procedure will let you reset the password?

- A. Log in as Bill Sykes using the root password, then reset Bill Sykes' password from Accounts preferences.
- B. Log in as Samuel Pickwick, then open Reset Password from the Utilities folder, and reset Bill Sykes' password.
- C. Restart the computer from the Mac OS X Install DVD, then open Reset Password from the Utilities menu, and reset Bill Sykes' password.
- D. Log in as Samuel Pickwick, open Directory preferences and enable the root user, then authenticate as the root user in Accounts preferences, and reset Bill Sykes' password.

**Answer: C**

#### Question No : 15

You type the host name, [www.apple.com](http://www.apple.com) in Safari's address bar. If TCP/IP is configured manually, which name server does your Mac OS X v10.7 computer query to identify the IP address that maps to that host?

- A. The name server assigned to the [apple.com](http://apple.com) domain by ICANN.
- B. Any name server that resides on the MacOS X v10.7 computer's local subnet.
- C. Any name server on the same network router as the MacOS X v10.7 computer.

D. A name server specified in the MacOS X v10.7 computers System Preferences.

**Answer: D**

**Question No : 16**

Which type of server is NOT accessible using the Finders Connect to Server command?

- A. AFP
- B. FTP
- C. SMB
- D. NFS
- E. RTSP
- F. WebDAV

**Answer: E**

**Question No : 17**

Which folder contains items that are started by the launchd process when a Mac OS X v10.7 computer starts up?

- A. /etc/launchd/
- B. /var/run/launchd/
- C. /Library/Extensions/
- D. /System/Library/LaunchDaemons/

**Answer: D**

**Question No : 18**

Which statement is TRUE of both USB and FireWire bus technologies?

- A. Both buses can host up to 127 peripherals.
- B. Both buses can operate at speeds up to 800 Mbit/s.
- C. Both bus technologies support only one type of connector each.
- D. Both buses can supply power to low-power consumption devices on the bus.