

# Apple

## Exam 9L0-517

### ACTC 10.7 Recertification Exam

Version: 6.0

[ Total Questions: 93 ]

**Question No : 1**

What protocol does the Mail application in OS X Lion use to send email from a client computer to a mail server for delivery?

- A. SMTP
- B. LDAP
- C. IMAP
- D. POP
- E. XMPP

**Answer: A**

**Question No : 2**

What are TWO ways an administrator can deliver a profile to iOS devices? (Choose 2.)

- A. Email the profile as an attachment to the user with instructions to install it on the iOS device.
- B. Distribute the profile to users' computers over the network, then tell users to sync their devices to their computers using iTunes.
- C. Connect each iOS device to an admin computer, and copy the .pfm file to the device.
- D. Post the profile on the App Store, and tell users to download it.
- E. Using Profile Manager, push the profile to an enrolled iOS device.

**Answer: A,E**

**Question No : 3**

What protocol does OS X Lion Server use to send email between mail servers?

- A. POP
- B. XMPP
- C. SMTP
- D. IMAP
- E. MAPI

**Answer: C**

**Question No : 4**

Which procedure will prevent guest users from seeing a specific shared folder that is hosted on an OS X Lion Server?

- A. Enable the Hidden flag on the folder.
- B. Set the folder's permissions for Everyone Else to No Access.
- C. Add a period to the beginning of the folder's name.
- D. Click the folder, then select Get Info from the File menu, and click the option "Hide from Guest Users."

**Answer: B**

**Question No : 5**

You want to manage iOS devices using Profile Manager. To do so, which THREE of these must be available to Profile Manager? (Choose 3.)

- A. A valid SSL certificate
- B. A configured WebDAV share
- C. A computer with iPhone Configuration Utility running
- D. A running AFP server
- E. A valid APNS certificate
- F. An Open Directory master

**Answer: A,E,F**

**Question No : 6**

Which statement best describes the wiki in OS X Lion Server?

- A. A series of date-stamped and chronologically ordered entries on a website
- B. A collaborative website that can be edited within a web browser
- C. A website that is configured to provide access to mail accounts
- D. A folder on a website, with permissions that restrict access to the files it contains

**Answer: B**

**Question No : 7**

Which of these is an example of authorization in OS X Lion and OS X Lion Server?

- A. The list of available volumes displayed when connecting to a file service
- B. A ticket-granting ticket in Ticket Viewer
- C. The "Connect to Server" dialog in Server Admin
- D. The User ID in a user account

**Answer: A**

**Question No : 8 HOTSPOT**

Your network administrator has assigned you these network settings:

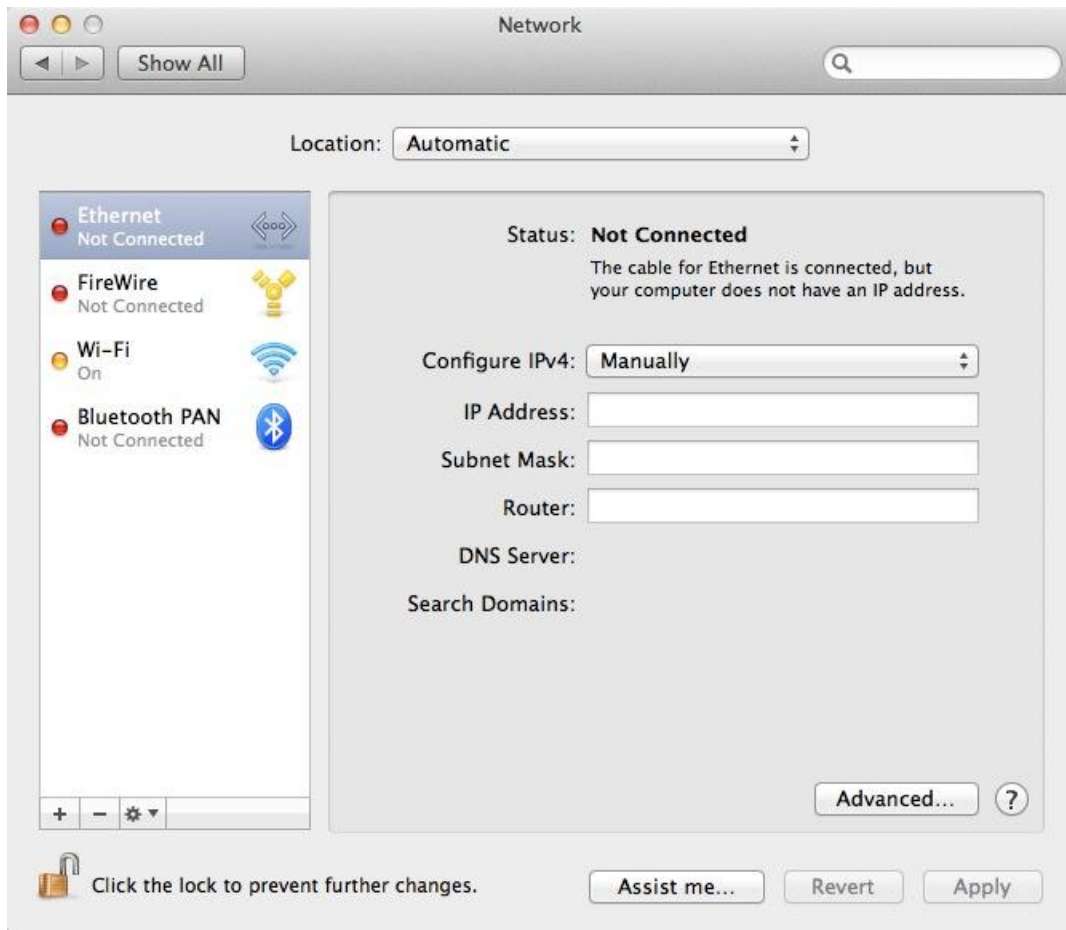
IP address 10.1.5.7

subnet mask 255.255.255.0

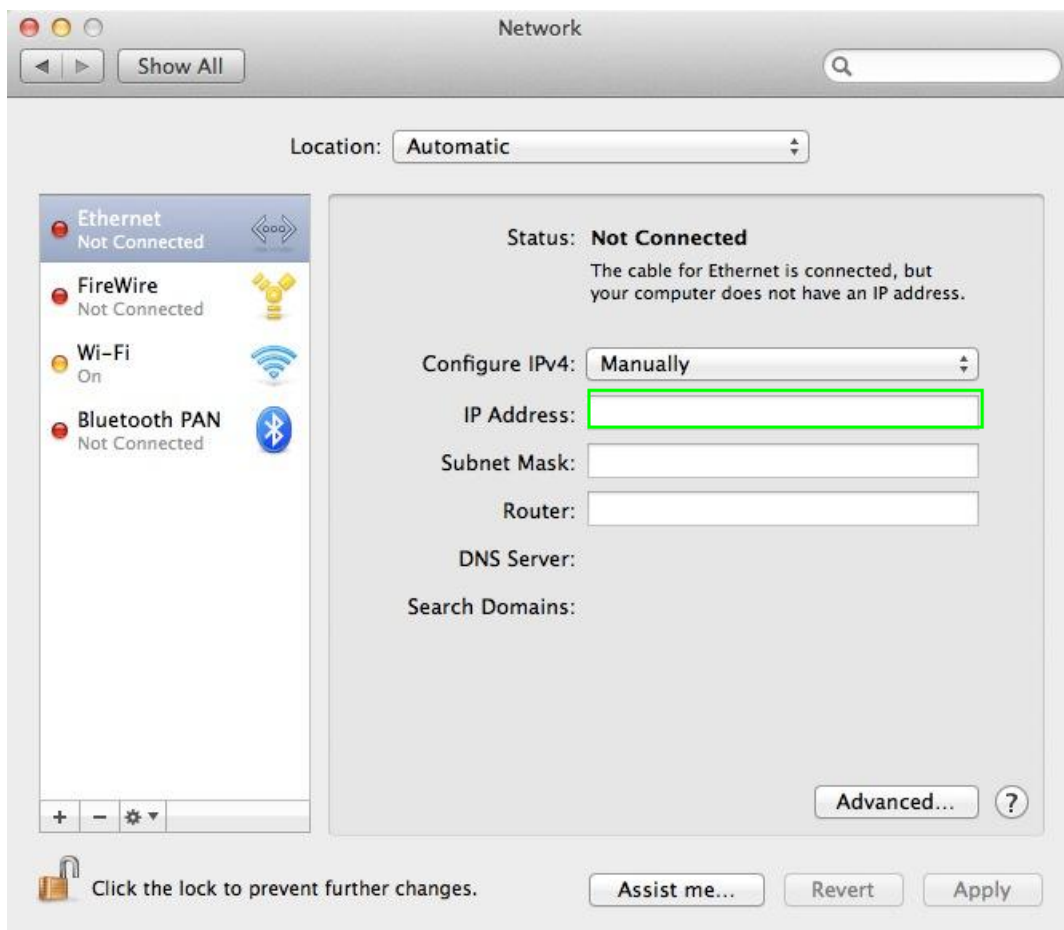
router address 10.1.5.1

In the screenshot below, click the field (or its name) where you can type 10.1.5.7/24 to auto-populate the remaining fields with the network settings you have been given.

(You will see a green crosshair where you click. You can change your selection.)



Answer:

**Question No : 9**

Using Server Admin, you are configuring email alerts to be sent to the system administrator of an OS X Lion Server. Which THREE of these server events can you select to trigger an alert?

(Choose 3.)

- A. An unsuccessful attempt was made to log in with the root account.
- B. A web page has been updated in the wiki service.
- C. The number of files on the server has exceeded a specified number.
- D. The number of users has exceeded a specified number.
- E. New software updates are available for the server.
- F. A disk has less than a specified percentage of free space available.
- G. A certificate has expired or is about to expire.
- H. A user has exceeded his or her assigned disk quota.

**Answer: E,F,G**

**Question No : 10**

What is an advantage of deploying signed Profile Manager profiles, rather than unsigned Profile Manager profiles?

- A. Signed profiles can be updated on devices via an update process; unsigned profiles must be deleted before a new profile can be installed.
- B. Only signed profiles can be installed on a device.
- C. An unsigned profile's source or contents may be misrepresented; signing validates both.
- D. Signed profiles cannot be removed by users without administrator authorization; unsigned profiles can be.

**Answer: C**

**Question No : 11**

Which key(s) can you press during a Mac computer's startup to cause the Mac to use NetBoot at startup?

- A. Command-N
- B. N
- C. Control-N
- D. Shift-N

**Answer: B**

**Question No : 12**

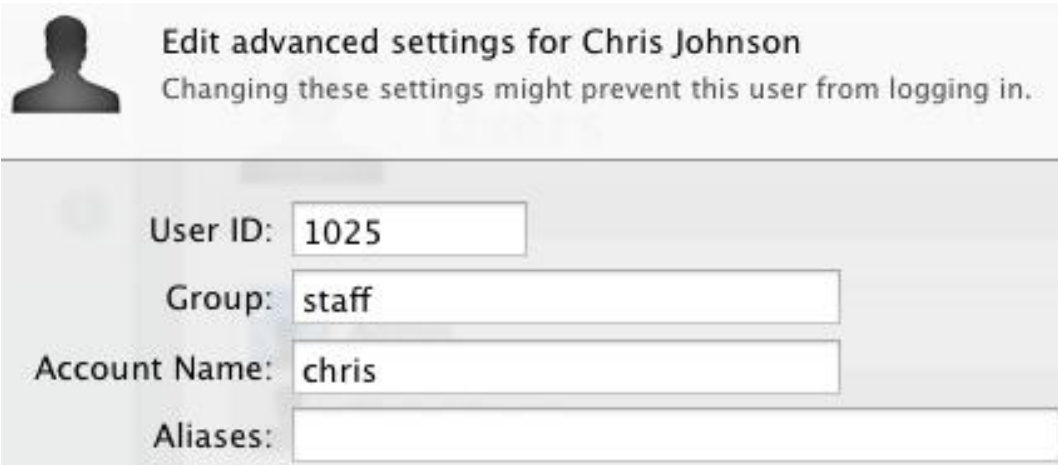
You want to secure the communication between the iCal service on an OS X Lion Server and its iCal clients. Using Server app, which of these can you use to achieve your goal?

- A. A Kerberos Ticket Granting Ticket (TGT)
- B. An SSH tunnel
- C. An SSL certificate and the HTTPS protocol
- D. The Universal Security Convention (USC)

**Answer: C**

**Question No : 13**

Review the screenshot of the user settings for Chris Johnson, and then answer the question below.



**Edit advanced settings for Chris Johnson**  
Changing these settings might prevent this user from logging in.

User ID:

Group:

Account Name:

Aliases:

What iChat service account name will this user have on the chat.pretendco.com server?

- A. user1025@chat.pretendco.com
- B. Chris Johnson
- C. chris@chat.pretendco.com
- D. chris\_johnson@chat.pretendco.com

**Answer: C**

**Question No : 14**

A user enables FileVault 2 and gets a recovery key. Which TWO methods for storing the recovery key does FileVault suggest to the user? (Choose 2.)

- A. Make a copy of the recovery key and store it in a safe place.
- B. Save the recovery key in the System Keychain.
- C. Store the recovery key with Apple.
- D. Store the recovery key on the Lion Recovery system partition, in the Recovery Key pane in FileVault 2.
- E. Store the recovery key in the Recovery Key folder in an iCloud account.

**Answer: A,C**



**Question No : 15**

Review the screenshot of settings for Address Book on an OS X Lion computer, and then answer the question below.



The OS X Lion computer whose Address Book settings are shown above is connected to an active Address Book service on a Lion Server at contacts.pretendco.com. By default, where will new contacts be stored?

- A. In the iCloud service, and synced to all configured devices
- B. Only on the Lion client computer
- C. Only on the Lion Server
- D. On the Lion Server, and synced to the Lion client computer

**Answer: D**

**Question No : 16**

Using the Server Status widget in OS X Lion Server, which of these services can you monitor?

- A. Podcast
- B. Profile Manager
- C. File Sharing
- D. Web

**Answer: C**