

IBM

Exam C9560-510

IBM Tivoli Monitoring V6.3 Administration

Version: 8.0

[Total Questions: 137]

Question No : 1

Which two statements are true regarding the Self-Describing Agent (SDA) feature?

- A. It is not available on a z/OS platform.
- B. It is disabled at the hub monitoring server by default.
- C. It creates its own workspaces in Tivoli Enterprise Portal.
- D. It improves time to value for installing and using IBM Tivoli Monitoring products.
- E. It requires the agent to use the IBM Tivoli Monitoring V6.2.1 agent framework.

Answer: A,E

Reference: [http://www-](http://www-01.ibm.com/support/knowledgecenter/SSTFXA_6.2.3/com.ibm.itm.doc_6.2.3/agentadmin_sda_intro.htm)

[01.ibm.com/support/knowledgecenter/SSTFXA_6.2.3/com.ibm.itm.doc_6.2.3/agentadmin_sda_intro.htm](http://www-01.ibm.com/support/knowledgecenter/SSTFXA_6.2.3/com.ibm.itm.doc_6.2.3/agentadmin_sda_intro.htm)

Question No : 2

Which component can be configured to have a Hot Standby?

- A. Tivoli Enterprise Portal Server
- B. Tivoli Enterprise Monitoring Server (Hub)
- C. Tivoli Enterprise Monitoring Server (Remote)
- D. Tivoli Enterprise Monitoring Automation Server

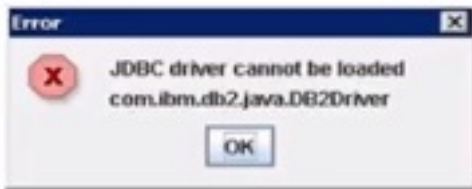
Answer: B

Reference: [http://www-](http://www-01.ibm.com/support/knowledgecenter/SSTFXA_6.2.0/com.ibm.itm.doc/itm_install44.htm%23failover_deploy)

[01.ibm.com/support/knowledgecenter/SSTFXA_6.2.0/com.ibm.itm.doc/itm_install44.htm%23failover_deploy](http://www-01.ibm.com/support/knowledgecenter/SSTFXA_6.2.0/com.ibm.itm.doc/itm_install44.htm%23failover_deploy) (See the table)

Question No : 3

When configuring the Summarization and Pruning agent, the connection is tested and this pop-up window displays:



How can this problem be resolved?

- A. Verify the correct Java version is used.
- B. Correct the JDBC entry name in the HD configuration file.
- C. Correct the JDBC driver name in the corresponding window entry.
- D. Verify that the parameter KSW_WAREHOUSE_JARS in the HD configuration file contains the correct Java path.

Answer: A

Reference: <http://www.ibm.com/developerworks/data/library/techarticle/dm-0512kokkat/>

Question No : 4

When using the Manage Tivoli Enterprise Monitoring Services console on Windows to turn on tracing, how can the trace panel be accessed?

- A. Right-click the component and select Trace Options.
- B. Double-click the component and select Edit Trace Parm.s.
- C. Right-click the component, select Advanced, then select Edit Trace Parm.s.
- D. Click the Tracing icon which looks like a terminal with an arrow pointing to it.

Answer: A

Question No : 5

If a custom workspace is associated with a custom Navigator view, and a Situation Event Console is added to that workspace, which managed systems' situation events are shown in that Situation Event Console?

- A. The situations that are true for all the managed systems that are connected to the IBM Tivoli Monitoring (ITM) infrastructure.
- B. The distributed situations for all the managed systems that are connected to the ITM

infrastructure.

C. The distributed situations for all the managed systems that are assigned to that custom Navigatorview.

D. The situations that are true for all the managed systems that are assigned to that custom Navigator view.

Answer: A

Question No : 6

Which statement is true when using the command interface to configure the Warehouse Proxy agent (WPA)?

A. tacmdaddsystem only installs the WPA

B. tacmdaddsystem installs and configures the WPA

C. tacmdconfigureSystem only configures the WPA on AIX

D. tacmdconfigureSystem installs and configures the WPA

Answer: D

Reference: [http://www-](http://www-01.ibm.com/support/knowledgecenter/SSATHD_7.7.0/com.ibm.itm.doc_6.3/wpa/fac_config_remote.htm)

[01.ibm.com/support/knowledgecenter/SSATHD_7.7.0/com.ibm.itm.doc_6.3/wpa/fac_config_remote.htm](http://www-01.ibm.com/support/knowledgecenter/SSATHD_7.7.0/com.ibm.itm.doc_6.3/wpa/fac_config_remote.htm)

Question No : 7

When configuring historical data collection on a new IBM Tivoli Monitoring V6.3 installation, what must be done to collect data starting from the Open the History Collection Configuration screen?

A. Select the system to collect data on

B. Select the metric to start collecting history on

C. Select a Monitored Application type and click New

D. Define the filter to select the proper systems to collect data on

Answer: D

Question No : 8

What are two valid statements about trace setting for agents?

- A. There is a command for the RAS1 logging level to be viewed.
- B. The RAS1 logging level setting can be disabled through a command.
- C. There is a command that can permanently set the RAS1 debug level.
- D. The RAS1 debug level can be permanently set through the service console.
- E. The RAS1 debug level can only be set by changing the agent configuration file.

Answer: A,B

Question No : 9

Which Tivoli Enterprise Portal Server user ID permission is required to create, modify, or remove custom workspaces?

- A. Workspace User Mode
- B. Workspace Author Mode
- C. User Administration Mode
- D. Workspace Administration Mode

Answer: B

Question No : 10

The Tivoli Enterprise Monitoring Server (TEMS) and Tivoli Enterprise Portal Server (TEPS) are installed in a secured subnet and only port 80 is open. A user needs to access the environment through the Tivoli Enterprise Portal (TEP) browser. Which statement is valid?

- A. No additional firewall ports need to be opened.
- B. Open additional firewall ports between the user's desktop and TEPS.
- C. Open additional firewall ports between the user's desktop and TEMS.
- D. Enable Login permitted through TEP browser permission to this user.

Answer: B

Question No : 11

A large number of custom situations are defined for the NT agent type and are being migrated to a brand new system. What is the correct command to export them?

- A. itmcmdExportSit -t NT
- B. tacmdbulkExportSit -t NT -f
- C. tivcmbulkExportSit -t NT -f
- D. migrate-export.sh ExportSit -t NT

Answer: D

Reference: http://www-01.ibm.com/support/knowledgecenter/SSTFXA_6.2.0.1/com.ibm.itm.doc_6.2.fp1/itm_cmdref10.htm%23bulkexpsit

Question No : 12

Based on this message in the IBM Tivoli Monitoring V6.3 log file, what did the agent fail to connect to with the host name served pa?

Unable to find running CMS on CT_CMSLIST <IP.PIPE:#server1 pa>

- A. The Warehouse Proxy agent
- B. The Tivoli Enterprise Portal Server
- C. The Summarization and Pruning agent
- D. The Remote Tivoli Enterprise Monitoring Server

Answer: C

Question No : 13

What is the name of the portal server environment file used to reconfigure the portal server parameters in Windows systems?

- A. cq.ini
- B. kfwenv
- C. kcqenv
- D. cqdefault.cfg

Answer: B

Reference: http://www-01.ibm.com/support/knowledgecenter/SSTFXA_6.3.0/com.ibm.itm.doc_6.3/install/teps_env.htm (4th row, 3rd column)

Question No : 14

Which statement is true about default Tivoli Enterprise Monitoring Server logs?

- A. The logs are disabled.
- B. Only errors are written in the log.
- C. Debug information is written in the log.
- D. The logs can be viewed from the Tivoli Enterprise Portal Server.

Answer: A

Question No : 15

Which statement is true regarding the Navigator Views tab in Administer Users?

- A. Available views are navigator views in which the user has view access.
- B. Assigned views are navigator views in which the user has view access.
- C. Assigned root are navigator items in which the user has change access.
- D. Assigned views are navigator views in which the user has change access.

Answer: C

Question No : 16

What is the default Tivoli Enterprise Monitoring Server log path in a Linux/UNIX installation?

- A. /opt/IBM/ITM/logs
- B. /opt/IBM/ITM/itmLogs
- C. /opt/IBM/ITM/ITMinstall_dir
- D. /opt/IBM/ITM/<architecture>/ins/bin

Answer: C

Question No : 17

Which statement is true regarding Tivoli Enterprise Portal Server (TEPS) V6.3?

- A. TEPS is responsible for all graphical presentation of monitoring data.
- B. TEPS collects and controls all data and alerts received from monitoring agents.
- C. TEPS is responsible for tracking the online or offline status of monitoring agents.
- D. TEPS is the first component installed when building the Tivoli Management Services foundation.

Answer: A

Explanation: The Tivoli Enterprise Portal Server, referred to as the portal server, is a repository for all graphical presentation of monitoring data.

Reference: [http://www-](http://www-01.ibm.com/support/knowledgecenter/SSTFXA_6.3.0/com.ibm.itm.doc_6.3/install/ch2.2components.htm)

[01.ibm.com/support/knowledgecenter/SSTFXA_6.3.0/com.ibm.itm.doc_6.3/install/ch2.2components.htm](http://www-01.ibm.com/support/knowledgecenter/SSTFXA_6.3.0/com.ibm.itm.doc_6.3/install/ch2.2components.htm)

Question No : 18

What does the cinfo -i command do in an IBM Tivoli Monitoring V6.3 UNIX/Linux environment?

- A. It lists configured instances.
- B. It shows running processes.
- C. It displays an inventory of installed products.
- D. It displays configuration prompts and configuration values.

Answer: C

Reference: [http://www-](http://www-01.ibm.com/support/knowledgecenter/SSTFXA_6.3.0/com.ibm.itm.doc_6.3/cmdref/cinfo.htm%23cinfo)

[01.ibm.com/support/knowledgecenter/SSTFXA_6.3.0/com.ibm.itm.doc_6.3/cmdref/cinfo.htm%23cinfo](http://www-01.ibm.com/support/knowledgecenter/SSTFXA_6.3.0/com.ibm.itm.doc_6.3/cmdref/cinfo.htm%23cinfo)

Question No : 19

Where must the software be installed when using clustering as a High Availability option?

- A. On a shared disk and configured with a virtual IP address
- B. Locally to both servers and configured with a virtual IP address
- C. On a shared disk and configured with both servers' IP addresses
- D. Locally to both servers and configured with both servers' IP addresses

Answer: C

Question No : 20

Where should the IBM Tivoli Monitoring Event Synchronization component be installed when installing the components for event forwarding?

- A. on its own host
- B. on the same host as the Tivoli Enterprise Portal Server
- C. on the host of the hub Tivoli Enterprise Monitoring Server
- D. on the same host as the IBM Tivoli Netcool/OMNIBusObjectServer

Answer: C

Reference: [http://www-](http://www-01.ibm.com/support/knowledgecenter/SSTFXA_6.3.0/com.ibm.itm.doc_6.3/install/event_sn_c_comp.htm)

[01.ibm.com/support/knowledgecenter/SSTFXA_6.3.0/com.ibm.itm.doc_6.3/install/event_sn_c_comp.htm](http://www-01.ibm.com/support/knowledgecenter/SSTFXA_6.3.0/com.ibm.itm.doc_6.3/install/event_sn_c_comp.htm)

Question No : 21

When creating a workflow policy, how can a delay be inserted before taking action?

- A. Put in a delay at the beginning of the workflow.
- B. Put in a Suspend Action widget before the action.
- C. Any action can have a delay inserted, so put the delay on Take Action.
- D. In the last step before taking action, insert a Make a Choice widget with the proper delay.

Answer: A

Question No : 22

Which two statements are true about the Take Action option from the Tivoli Enterprise Portal (TEP) client?

- A. It is executed in the context of the Navigator item.
- B. It is executed only for UNIX/Linux systems.
- C. It is executed only from the TEP desktop client.
- D. It is executed from a chart view or a table view.
- E. It is executed from a Manage Tivoli Enterprise Monitoring Services window.

Answer: A,E

Question No : 23

What happens when deleting a user group?

- A. All user IDs associated with only that group are deleted.
- B. All user IDs associated with the group are deleted even if they are in another group.
- C. All user IDs associated with the group have all group permissions removed immediately.
- D. All user IDs associated with the group have all group permissions removed during their next sign in.

Answer: B

Question No : 24

How is this error fixed in a Windows OS agent? Unable to allocate 2147483642 bytes of memory.

- A. Increase the page file size.
- B. Stop and restart the monitoring agent.
- C. Disable the PerfProc performance object.
- D. Delete the TMAITM6\Jogs\khdexpcfg file and then restart the agent.