

COG-321

**COG-321**

**IBM Cognos Express Reporter v9.0**

Version 24.6

## COG-321

**QUESTION NO: 1**

When a default model is created, how many tables are brought into the model from the database?

- A. first 25
- B. half
- C. all
- D. none

**Answer: C**

**QUESTION NO: 2**

When importing metadata into Framework Manager from a relational database, what can be controlled by the modeler performing the import?

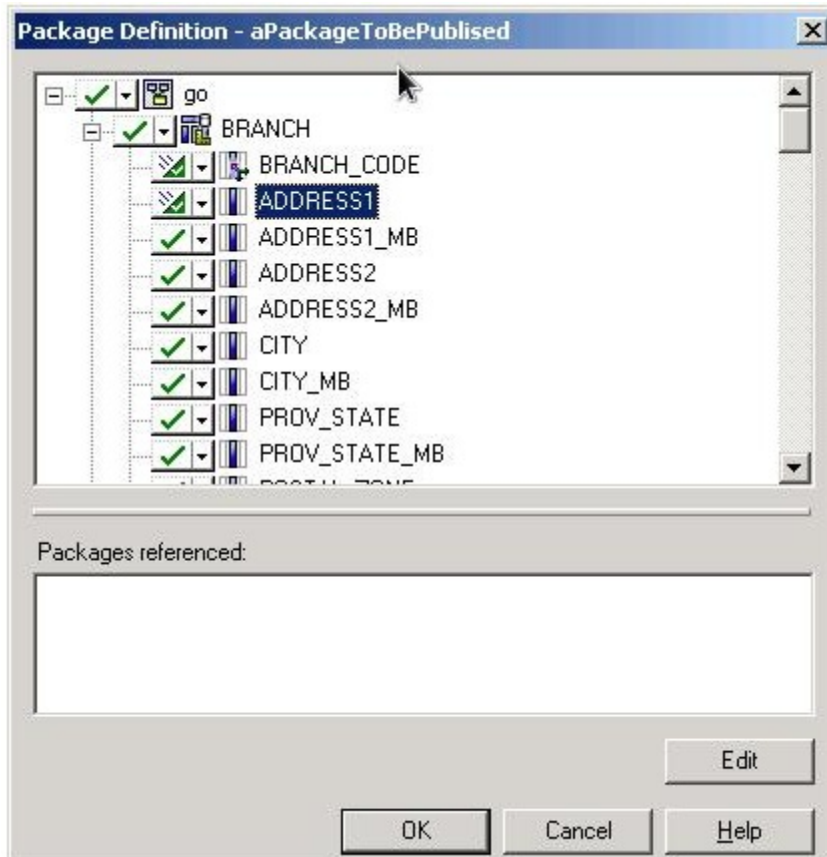
- A. converting inner joins in the database to outer joins in the model
- B. defining multiple connections to the data source
- C. generating relationships based on existing primary and foreign key relationships in the database
- D. specifying the usage property for generated query items

**Answer: C**

**QUESTION NO: 3**

Click the Exhibit button.

## COG-321



During package creation in Framework Manager, you can select objects that are to be included in the package. Referring to the exhibit, which inclusion method is selected for the ADDRESS1 object?

- A. Selected
- B. Hidden
- C. Unselected
- D. Removed

**Answer: B**

**QUESTION NO: 4**

When using Framework Manager, which type of models can be managed?

- A. OLAP and DMR
- B. Power Cube and TM1 Cube
- C. DMR and Relational
- D. MSAS and SAP BW

**Answer: C**

## COG-321

**QUESTION NO: 5**

What does Express Manager use to create a default model when a data source is created?

- A. a previous model definition
- B. the user's choices in the Framework Manager wizard
- C. a data source connection
- D. a template for each data source type

**Answer: D**

**QUESTION NO: 6**

In Framework Manager, how can a user help to automatically control queries at run-time?

- A. Use a macro that can be inserted into a Calculation, SQL Expression, or filter.
- B. Modify the data source during execution.
- C. Use a parameter to control the query.
- D. Apply security to the query enabling only administrators to execute them.

**Answer: A**

**QUESTION NO: 7**

What are two reasons for including determinants in your model? (Choose two.)

- A. to provide control over granularity when performing aggregation
- B. to control the usage property during import
- C. to assist with setting security at the data level
- D. to improve performance on dimensionally modeled relational data (DMR)

**Answer: A, D**

**QUESTION NO: 8**

How can creating a package containing multiple cubes in Framework Manager impact performance?

- A. Each time the package is used data from all cubes must be retrieved which slows down loading time.
- B. Each time the package is used a connection to all cubes is established which slows down metadata loading time.

## COG-321

C. Each time a report is run the cubes in the package are traversed in a sequential order until the correct one is found.

D. Each time a report is run the data sources are locked, forcing other reports to pause their execution.

**Answer: B**

**QUESTION NO: 9**

If a business key is changed for a level in a regular dimension, which two changes may occur? (Choose two.)

A. member MUNS change

B. determinants are removed

C. level MUNS change

D. resulting queries will now fail

**Answer: A, D**

**QUESTION NO: 10**

To ensure a query subject is recognized as a fact by the Cognos query engine in all query scenarios, the query subject requires which cardinality rule?

A. One instance of attached cardinality must be 1..1.

B. One instance of attached cardinality must be 0..1.

C. All instances of attached cardinality must be 1..1 and 0..n.

D. All instances of attached cardinality must be either 1..n or 0..n.

**Answer: D**

**QUESTION NO: 11**

To reduce maintenance work in Framework Manager, which type of packages can be used to consolidate other packages?

A. shared packages

B. nested packages

C. descendent packages

D. unique packages

**Answer: B**

## COG-321

**QUESTION NO: 12**

You are using Framework Manager and star schema groupings in the business view. How can conformed dimensions be identified?

- A. Modify the icon for the query subject.
- B. Use a matching name for each dimension in the star schema grouping.
- C. Use view properties in a studio.
- D. Use the diagram view.

**Answer: B**

**QUESTION NO: 13**

In Framework Manager, why should metadata be modeled as a virtual star schema?

- A. Performance is dramatically improved for queries.
- B. It allows report authors to more simply generate complex calculations in reports.
- C. It helps ensure predictable results.
- D. It allows the modeler to maintain a tighter security policy.

**Answer: C**

**QUESTION NO: 14**

When publishing a new package from Framework Manager, model versioning is enabled by default. What are two ways that you can disable this functionality? (Choose two.)

- A. Set the number of models to retain to '1' in the publishing wizard.
- B. Disable model versioning in the "Preferences" dialog box.
- C. Uncheck the "enable model versioning" checkbox in the publishing wizard.
- D. Set the number of models to retain to "-1" in the publishing wizard.

**Answer: A, C**

**QUESTION NO: 15**

To configure IBM Cognos Express to use a company's Active Directory namespace, what should you do?

- A. Assign privileges to the IBM Cognos Express administrators.
- B. Install IBM Cognos Xcelerator from within IBM Cognos Express Manager.