

EMC

Exam E20-385

Data Domain Specialist Exam for Implementation Engineers

Version: 5.0

[Total Questions: 104]

Question No : 1

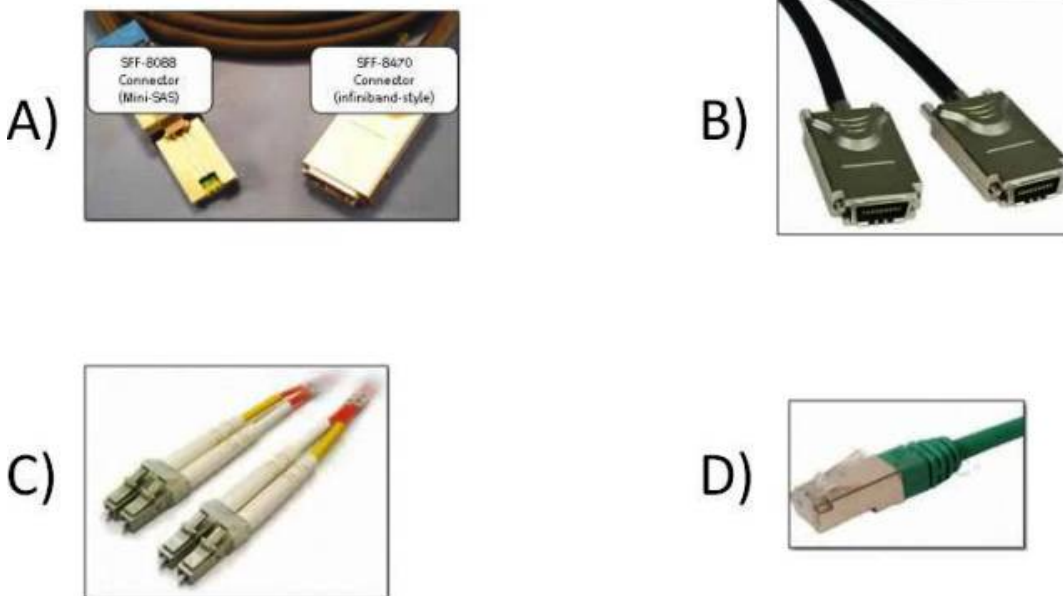
What is a characteristic of an EMC Data Domain Encryption software option?

- A. If the passphrase is lost, a new one can be obtained from technical support
- B. Encryption occurs in the backup server before it is sent to the Data Domain system
- C. After encryption is enabled, the file system cannot be locked
- D. Data written before encryption is enabled is not automatically encrypted.

Answer: D

Question No : 2

As illustrated in the exhibit,



which cable connects one EMC Data Domain ES20 expansion shelf to another ES20 expansion shelf?

- A. A
- B. B
- C. C
- D. D

Answer: B

Question No : 3

What is the maximum number of snapshots on an EMC Data Domain system?

- A. 255
- B. 256
- C. 750
- D. 1024

Answer: C

Question No : 4

What is a characteristic of EMC Data Domain variable segment size deduplication?

- A. Segmentation is based on bytes not files
- B. Entire data stream moves to make room for the new segment
- C. A file is stored and duplicate versions are pointed to the original
- D. Variable segment size is not supported on a Data Domain system

Answer: A

Question No : 5

An EMC Data Domain system has 300 TB of usable storage with 270 TB currently used. Daily backups are consuming an additional 5 TB per day. Based on this trend, what will occur if nothing is changed?

- A. Compression will keep increasing
- B. Disk performance will decrease
- C. File system will run cleaning more often
- D. File system will run out of space

Answer: D

Question No : 6

Which EMC Data Domain system feature requires a license?

- A. Encryption
- B. Snapshots
- C. Fastcopy
- D. Cleaning

Answer: A

Question No : 7

A customer has enabled CIFS and configured the CIFS shares on an EMC Data Domain system to allow access through a Symantec NetBackup Media Server. What is a step that must be done on the Media Server to enable read/write access to the shared directory and configure the devices?

- A. Configure the NetBackup services to start as a user that has access to the share
- B. Configure a NetBackup disk pool to be used by the NetBackup devices
- C. Create a mapped network drive that reconnects when the NetBackup service is started
- D. Enable the DD Boost plugin on the NetBackup Media Server

Answer: A

Question No : 8

An organization has 6000 GB of file system data with a daily change rate of 10%. Assume the first backup reduces by a factor of 3 (3x), daily incremental backups reduce by a factor of 10 (10x), and subsequent full backups reduce by a factor of 30 (30x). Required retention is 10 weeks (1 weekly full/6 daily incrementals) and system utilization cannot exceed 50% of available capacity.

What is the minimum EMC Data Domain storage required?

- A. 5600 GB
- B. 7600 GB
- C. 11200 GB
- D. 15200 GB

Answer: D

Question No : 9

When using the EMC Data Domain Virtual Tape Library software option, which backup software operation allows space to be reclaimed on a Data Domain system?

- A. Relabeling tapes
- B. Exporting tapes
- C. Vaulting tapes
- D. Importing tapes

Answer: A

Question No : 10

An EMC NetWorker customer is implementing a new EMC Data Domain system in their environment. Backup data will be transferred over a private IP network. The customer plans on using three different NetWorker pools with different retention periods.

Which configuration is required?

- A. Set up multiple retention periods
- B. Create one AFTD for each pool
- C. Configure multiplexing across pools
- D. Avoid mixing different types of data in the same pool

Answer: B

Question No : 11

A customer is looking for a solution to backup their 20 TB of image and video data on a Microsoft Windows server. The data has a high change rate and 3-day retention period. The customer can use either Fibre Channel or Ethernet for backups.

Which EMC Data Domain configuration would best fit the customer's requirement?

- A. Data Domain is not a viable solution
- B. Data Domain system using CIFS
- C. Data Domain system using VTL
- D. Data Domain system using DD Boost

Answer: A

Question No : 12

When setting the MTU size for an Ethernet interface on an EMC Data Domain system, what is the maximum supported value?

- A. 1500
- B. 9000
- C. 9014
- D. 9040

Answer: C

Question No : 13

Which variable length segment size range is used for EMC Data Domain deduplication?

- A. 2 - 8 KB
- B. 4 - 12 KB
- C. 6 - 16 KB
- D. 8 - 18 KB

Answer: B

Question No : 14

An EMC Data Domain customer has setup a DD VTL for their backup software. They created slots, drives, and tapes. The backup software shows the tape drives and the robot, but not the tapes.

Which step was missed on the Data Domain system?

- A. Import the virtual tapes in the VTL
- B. Configure Fibre Channel LUN masking
- C. Tape labels are not defined
- D. Incorrect media type is defined

Answer: A

Question No : 15

A customer has a backup environment with EMC NetWorker and an EMC Data Domain system. Which NetWorker component stores tracking information about the backups on the Data Domain system?

- A. NetWorker Server
- B. Storage Node
- C. Media Server
- D. NetWorker Backup Client

Answer: A

Question No : 16

When logging into an EMC Data Domain system for the first time during installation, which connection type can be used?

- A. Serial Console
- B. Telnet
- C. IPMI
- D. FTP

Answer: A

Question No : 17

When creating virtual tapes on an EMC Data Domain system by specifying "L3" in the suffix of the virtual media barcode, which tape size will be created?

- A. 10 GB
- B. 50 GB
- C. 100 GB
- D. 400 GB

Answer: D

Question No : 18

You have been tasked with setting up a VTL on an EMC Data Domain system in an EMC NetWorker environment. To maximize deduplication, which value should be used for the "Target Sessions" and "Max Sessions" parameters?

- A. 1, 1
- B. 1, 2
- C. 1, Unlimited
- D. Unlimited, 1

Answer: A

Question No : 19

Which interface is used for the initial access and configuration of an EMC Data Domain system?

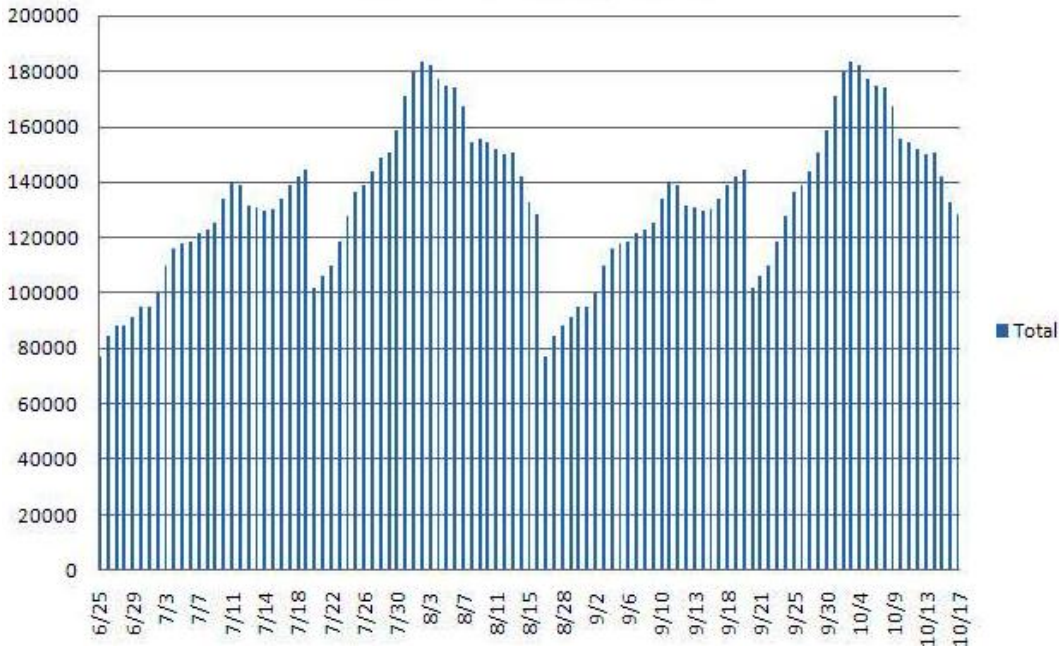
- A. KVM ports or serial console
- B. Onboard eth0a as factory configured IP 192.168.0.1 using Telnet
- C. IPMI management port
- D. Onboard eth0b as factory configured IP 192.168.0.1 using SSH or HTTP

Answer: A

Question No : 20

On 8/15, what causes the drop in disk usage on the EMC Data Domain system as illustrated in the exhibit?

Total Disk Usage (GB)



- A. Data was deleted on the system and file system cleaning completed
- B. Data was deleted on the system and no longer used
- C. Better deduplication ratios and less storage was needed
- D. More storage was added and allowed for higher compression

Answer: A

Question No : 21

Based on the exhibit,

```

09/30 16:53:03
CPU FS FS Net KB/s Disk KiB/s Disk NVRAM Repl
busy ops/s proc in out read write busy KiB/s KB/s
-----
11% 119 7% 17951 436 0 0 0% 17816 0
12% 121 7% 18735 455 0 3078 0% 17657 0
10% 118 7% 18269 445 0 67 0% 16857 0
9% 116 7% 17103 418 0 0 0% 16467 0
10% 119 8% 16556 404 0 0 0% 17510 0
7% 91 5% 18293 444 0 27 0% 12213 0
7% 64 3% 12720 314 0 3078 0% 9405 0
6% 70 3% 8543 211 0 0 0% 9664 0
7% 81 4% 8927 222 16 60 0% 10588 0
7% 60 3% 9163 229 0 3078 0% 9468 0
7% 32 2% 8696 217 0 6156 0% 5675 0
1% 9 0% 4088 103 0 27 0% 164 0
1% 9 0% 177 8 0 60 0% 181 0
    
```