

# Netapp

## Exam NS0-502

**NetApp Certified Implementation Engineer – SAN**

Version: 6.0

**[ Total Questions: 106 ]**

**Question No : 1**

A company wants to use jumbo frames to improve performance with their iSCSI network. When setting up the Ethernet switches for jumbo frames, which three components need to be configured? (Choose three.)

- A. Ethernet port on Management Console
- B. Ethernet port on RLM
- C. Ethernet port on host system
- D. Ethernet port on storage device
- E. Ethernet port on FC switch
- F. Ethernet switch ports being used

**Answer: C,D,F**

**Question No : 2**

Which utility on Solaris 10 can be used to collect information about firmware and driver versions for an Emulex LP1xxxx/LPe1xxxx HBA?

- A. EMutil
- B. SANutil
- C. hbainfo
- D. SANsurfer
- E. HBAnywhere

**Answer: E**

**Question No : 3**

Which command on a NetApp storage controller will display the average service time on a FC target port basis every five seconds?

- A. sysstat -i 5
- B. sysstat -f 5
- C. fcp stats -i 5
- D. lun stats -i 5

**Answer: C**

**Question No : 4**

Which NetApp host utility command determines the number of paths per LUN visible to the host?

- A. sanlun path show
- B. sanlun lun show -p
- C. sanlun fcp show adapter -p
- D. sanlun fcp show adapter -c

**Answer: B**

**Question No : 5**

What are three relevant perfstat counters to check for unaligned I/O that do not fall on the WAFL boundary? (Choose three.)

- A. wp.partial\_write
- B. vvol\_read.io\_valid
- C. read/write\_align\_histo.XX
- D. read/write\_partial\_blocks.XX
- E. xinode content misses

**Answer: A,C,D**

**Question No : 6**

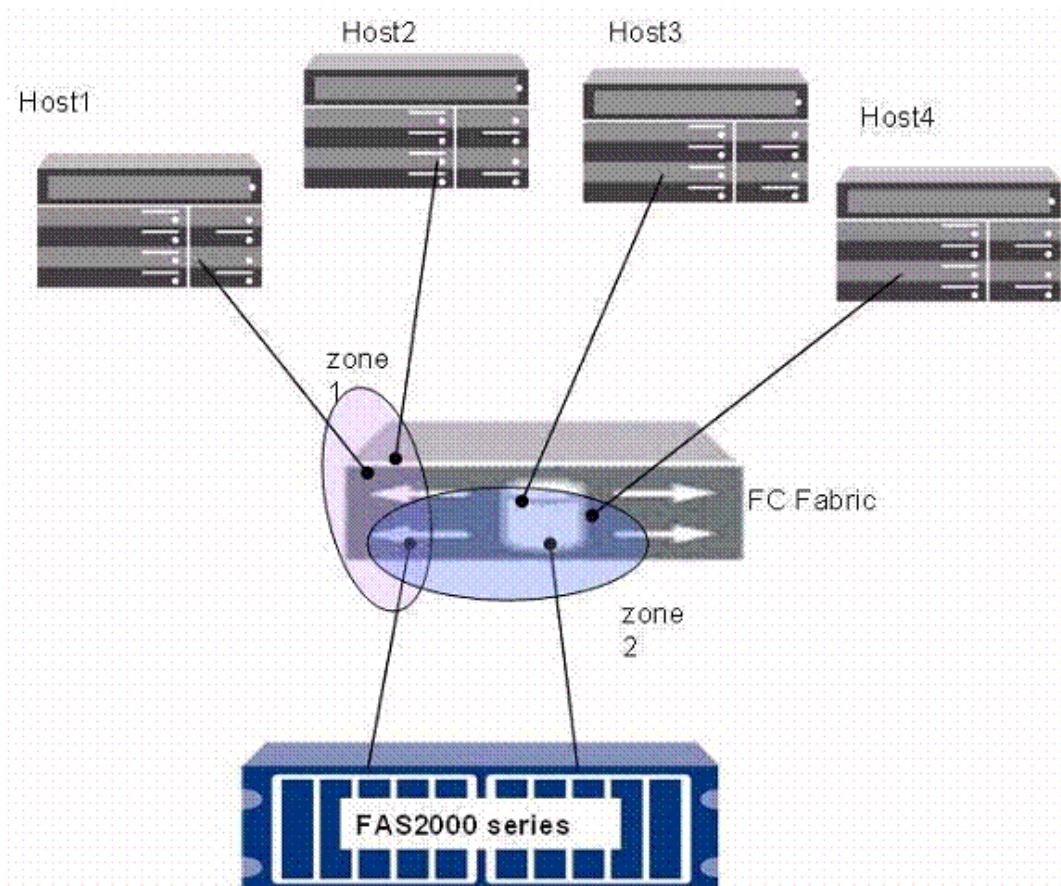
What are two functions provided by the NetApp Host Utilities Kits? (Choose two.)

- A. They provide the ability to take snapshots of local file systems.
- B. They provide properly set disk and HBA timeout values.
- C. They identify and set path priorities for NetApp LUNs.
- D. They provide SnapMirror/SnapVault integration.

Answer: B,C

**Question No : 7**

Click the Exhibit button.



</exhibit>

In the diagram shown, how should the zoning configuration be changed to better comply with NetApp best practices?

- A. four zones, each with one initiator, first two with the first target port and the second two with the second target port
- B. two zones, each with two initiators and one target port
- C. two zones, each with all four initiators and one target port
- D. four zones, each with one initiator and both target ports

Answer: D

**Question No : 8**

When running diagnostic tests after an initial installation of a NetApp FAS3000 storage system, which command is used to run a comprehensive set of diagnostic tests on the entire system?

- A. all
- B. comprehensive
- C. full
- D. stress

**Answer: A**

**Question No : 9**

What is the appropriate method for testing high availability controller failover?

- A. pull a power cord from a power supply on a controller
- B. shut down a controller
- C. issue the takeover command from a controller
- D. issue the giveback command from a controller

**Answer: C**

**Question No : 10**

Click the Exhibit button.

```
port 0:id N2 No_Light
port 1:id N2 Online      f-Port 10:00:00:00:c9:37:85:ab
port 2:id N2 No_Light
port 3:id N2 Online      f-Port 10:00:00:00:c9:00:a0:98
port 4:id N2 Online      f-Port 50:00:a0:98:ff:40:a0:98
port 5:id N2 Online      f-Port 10:0a:09:80:c9:50:52:8c
port 6:id N2 Online      f-Port 20:a0:98:00:c9:42:7b:29
port 7:id N2 Online      f-Port 50:0a:09:81:83:e1:52:d9
```

The NetApp OUI is 00:A0:98

Given the information shown in the diagram, which port has a NetApp device attached to it?

- A. port 3
- B. port 5
- C. port 6
- D. port 7

**Answer: D**

#### Question No : 11

Which software feature must be supported and configured on the NetApp storage controller to configure multipath high availability between the storage controller and disk shelves?

- A. MetroCluster
- B. Software Disk Ownership
- C. Snapshot copies
- D. Single System Image cfmode

**Answer: B**

#### Question No : 12

What would you use to share a data LUN among multiple servers where each server has simultaneous write access?

- A. host-based BootBIOS
- B. host-based multipathing
- C. host-based volume manager
- D. host-based clustered file system

**Answer: D**

---

**Question No : 13**

After completing the configuration of a new Brocade Fibre Channel switch, which command do you use to verify your configuration?

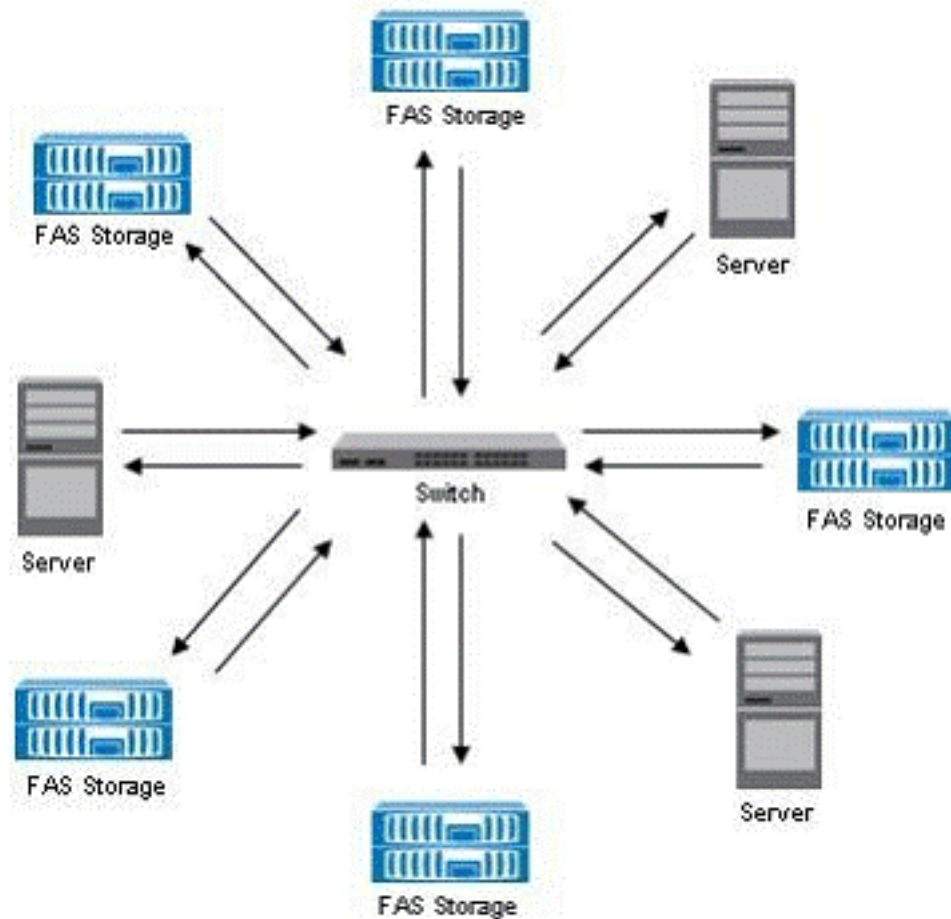
- A. switchshow
- B. show config
- C. configshow
- D. cfgshow

**Answer: C**

---

**Question No : 14**

Click the Exhibit button.



Given the information provided in the diagram, what is the appropriate FC topology?

- A. point-to-point
- B. switched fabric
- C. arbitrated loop
- D. ring

**Answer: B**

**Question No : 15**

Which command will display which Brocade switches are connected into a fabric?

- A. fabricshow
- B. switchshow
- C. show fabric



D. configshow

**Answer: A**

**Question No : 16**

What are two performance tuning parameters available for Fibre Channel HBAs on a host? (Choose two.)

- A. LUN queue depth
- B. HBA BootBIOS enabled
- C. Fibre Channel speed
- D. LUN device ID

**Answer: A,C**

**Question No : 17**

Which three statements are true about Asymmetric Logical Unit Access (ALUA)? (Choose three.)

- A. It is a set of SCSI commands for discovering and managing multiple paths to LUNs on Fibre Channel and iSCSI SANs.
- B. It requires Array Support Library (ASL), a proprietary vendor library.
- C. It allows the initiator to query the target about path attributes, such as primary path and secondary path.
- D. It no longer requires proprietary SCSI commands.
- E. It works in standby and single\_image cfmodes.

**Answer: A,C,D**

**Question No : 18**

For which four operations would you use igroup throttles on a NetApp storage solution? (Choose four.)