

IBM

Exam P2070-053

IBM FileNet P8 Product Fundamentals Technical Mastery Test v1

Version: 4.0

[Total Questions: 105]

Question No : 1

According to IBM recommendations, which database column does NOT need to be indexed in order to improve the performance of the IBM FileNet Content Platform Engine database?

- A. mime_type
- B. security_policy_id
- C. tail_id and head_id
- D. element_value

Answer: D

Question No : 2

IBM FileNet Process Designer is the tool used to create work flow definitions. This tool also provides access to other commonly used tools, provided you have the proper access rights. What are the proper access rights?

- A. Process Administration, Process Analyzer, and Simulation
- B. FileNet Enterprise Manager, Process Administration, Process Configuration
- C. Process Configuration, Process Administration, and Simulation
- D. Process Configuration, Process Administration, Process Analyzer, and Simulation

Answer: C

Question No : 3

The CE Java and .NET APIs include a mechanism called "fetchless instantiation". Which of the following best describes that mechanism?

- A. An in-memory programming language instance of an object can be created without fetching it from the CE server.
- B. Via drag-and-drop in a web application, multiple objects can be created without future user interaction.
- C. New objects can be created with a null value for the Owner property.
- D. Documents and annotations can be fetched from the CE server without fetching their content.

Answer: A

Question No : 4

What is the primary use of FileNet Deployment Manager?

- A. Deployment of custom jar files into the selected J2EE server
- B. Deployment of the base application into the selected J2EE server
- C. Propagating patched files to IBM supplied applications as part of maintenance operations
- D. Propagating incremental sets of changes from a source environment to a subset of the existing objects in a destination environment

Answer: D

Question No : 5

In what significant functional way or ways do the CE Java and .NET APIs differ?

- A. Only the CE .NET API can use Content Management Interoperability Services (CMIS) as a transport.
- B. They have different authentication techniques and distributed transaction handling.
- C. The CE Java API cannot use web services as a transport.
- D. The CE .NET API uses OLEDB for executing CE SQL queries.

Answer: B

Question No : 6

An upgrade to a basic IBM FileNet P8 V5.1 BPM installation from IBM FileNet P8 V4.0 is being planned. To minimize the downtime the customer wants to do staged upgrades. The Application Engine is at V4.0.2 with the latest fix pack already installed. What is the best way to determine the impact of installing fix packs in planning for this scenario?

- A. No extra planning is necessary as you always install the latest fix packs during any upgrade.
- B. Use the IBM FileNet P8 V5.X Fix Pack Compatibility Matrix to determine which fix packs are compatible.
- C. Go to Fix Central, review the fix pack Readme files for the new version applicable fix packs, and only include those that are marked "REQUIRED".

D. Go to Fix Central, review all the latest component fix pack Readme files for dependencies, and exclude them if the fixes do not relate to the system.

Answer: B

Question No : 7

Which one of the following is NOT a function of the FileNet Process Configuration Console?

- A. Configure workflow subscriptions
- B. Configure component queues
- C. Configure work queues
- D. Configure the event logs

Answer: A

Question No : 8

As part of a new IBM FileNet P8 installation an installer is configuring SSL between the Process Engine and the Content Engine. The installer runs the following command to import the CA certificate to the Java keystore: `\PE_installation_directory\java\jre\bin\keytool -import -file <cert_file_name> -alias <alias> -keystore cacerts -storepass <password>` What is the default password?

- A. cacert
- B. changeit
- C. password
- D. change\$_this_obnoxious_passwrd

Answer: B

Question No : 9

Where are the application server logs located in a typical IBM WebSphere CPE installation?

- A. `install_root/profiles/<profile-name>/logs/<server-name>`
- B. `install_root/user_projects/domains/<domain-name>/servers/<server-name>/logs`

- C. install_root/server/<server-name>/log
- D. <Deployed_CPE_home_dir/FileNet/<server-name>

Answer: A

Question No : 10

Which of the following is NOT true about authentication for P8 custom applications?

- A. Kerberos is available with the CE .NET API.
- B. Kerberos is available with the CE Java API when using CEWS transport.
- C. The CE Java API with EJB transport does not know or care what form of authentication was actually used as long as it is trusted by the CE application server
- D. The CE Java API with CEWS transports unencrypted credentials. For protection, an encrypted connection using TLS/SSL should be used.

Answer: B

Question No : 11

As part of an initial setup of Deployment Manager, a base set of XML files can be created to use as a template for configuration. What is the command line used on a Microsoft Windows based server to create these XML files?

- A. DeploymentManagerCmd.bat --samples
- B. DeploymentManagerCmd.bat --operation CreateBaseXML
- C. DeploymentManagerCmd.bat --operation CreateEnvironment
- D. DeploymentManagerCmd.bat --operation CreateDeployPackage

Answer: A

Question No : 12

An instance of IBM Content Search Services server has been successfully installed. To verify the installation, the deployment specialist needs to check the value of the authentication token that was generated by the installation procedure, based upon the supplied seed, and then manually record it for later use. How can this be accomplished?

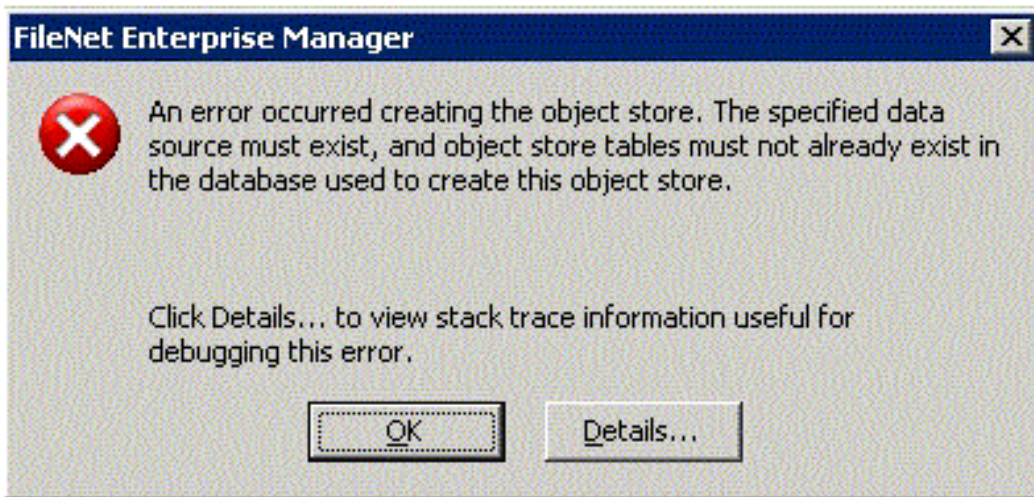
- A. Inspect the installation log file - the token is recorded there.

- B. Use the supplied configTool command line utility to display the value of the token.
- C. Use the supplied adminTool command line utility to display the value of the token.
- D. Use the supplied dumpIndex tool to recover the configuration information (including the token).

Answer: B

Question No : 13

A customer is trying to create an object store using a database storage area. When attempting to create an object store, the following error occurs in IBM FileNet Enterprise Manager.



How would the customer overcome this error to create the object store?

- A. Create a new database. Use the database name as the Object Store Data Source name in the Create Object Store wizard.
- B. Create a new database. Create a new Object Store Data Source using FileNet Configuration Manager. Use this new Object Store Data Source name in the Create Object store wizard
- C. Create a new database. Set an application server variable to map the datasource name. Use this application server variable as the Object Store Data Source name in the Create Object store wizard.

D. Drop the database pointed by the Object Store datasource used in the Create Object store wizard. Create a new Object Store Data Source using FileNet Configuration Manager. Use this new Object Store Data Source name in the Create Object store wizard.

Answer: B

Question No : 14

There is a requirement to deploy Workplace into a highly available environment: an application server cluster. To achieve this, the consultant should:

- A. Install Workplace on one server in the cluster and use the application server tools to deploy to the other cluster members.
- B. Install Workplace on all servers in the cluster and use the application server tools to deploy from one server to all the cluster members.
- C. Install Workplace on all servers in the cluster and use the application server tools to deploy to each local application server member in turn.
- D. Install Workplace on one server and use the application server tools to deploy to the local application server, then manually copy the installation to all servers in the cluster.

Answer: B

Question No : 15

A customer would like to expand their IBM FileNet Content Engine instance, by adding additional object stores as well as add multiple LDAP realms. Which of the following tasks can help the customer expand their system using FileNet Configuration Manager?

- A. Configure LDAP Configure Bootstrap Properties Deploy
- B. Configure GCD JDBC Data Sources Configure LDAP Configure Bootstrap Properties Deploy
- C. Configure Object Store JDBC Data Sources Configure LDAP
- D. Configure GCD JDBC Data Sources Configure Object Store JDBC Data Sources Configure Bootstrap Properties

Answer: C

Question No : 16

A security administrator has been assigned the task of creating a Content Engine bootstrap account. The account must be able perform the following task: establish a connection to the application server, access the JNDI lookup tree and lookup the data source for accessing the GCD. What other function does the Content Engine bootstrap account need to perform?

- A. Create the data sources for the GCD.
- B. Startup the Content Engine application.
- C. Startup the Content Engine background tasks.
- D. Startup the Content Engine application server.

Answer: C

Question No : 17

Before you install IBM FileNet Content Platform Engine(CPE) 5.2, on DB2 or Oracle, how many databases will you recommend as a best practice?

- A. One database
- B. Two separate databases each with a separate tablespace
- C. Three separate databases. One for the GCD, one for Content, and one for the 1st Object Store
- D. Four separate databases. One for the GCD, one for Content, one for the 1st Object Store, and one for a Fixed Content Device

Answer: B

Question No : 18

Which of the following tablespaces should be created in an IBM FileNet Content Engine object store database when using DB2?

- A. Data tablespace, GCD tablespace
- B. User tablespace, Temporary tablespace
- C. Index tablespace (Optional), Large object (Lob) tablespace (Optional)
- D. Data tablespace, Index tablespace (Optional), Large object (Lob) tablespace (Optional)

Answer: D

Question No : 19