

BCS

Exam TTA1

ISTQB-BCS Certified Tester Advanced Level- Technical Test Analyst (2012)

Version: 6.0

[Total Questions: 65]

Topic break down

Topic	No. of Questions
Topic 1: "Test Techniques various"	9
Topic 2: Structure-based Techniques	7
Topic 3: Bonus Program	16
Topic 4: Test tools & Automation	6
Topic 5: Testing of Software Characteristics	8
Topic 6: Specification Based Test Techniques	8
Topic 7: Test Process & Incident Management	11

Topic 1, "Test Techniques various"**Question No : 1 - (Topic 1)**

A component has been analyzed as being highly critical. Which of the following structure-based test design techniques provides the highest level of coverage? 1 credit [K2]

Number of correct answers: 1

- A. Statement testing
- B. Decision testing
- C. Condition determination testing
- D. Multiple condition testing

Answer: C

Question No : 2 - (Topic 1)

Consider the following fault attack: "Force all possible incoming errors from the software/OS interfaces to the application". Which of the following is the kind of failure you are looking for when using this attack? 1 credit [K2]

Number of correct answers: 1

- A. Application crashes when unsupported characters are pasted into an input field using the windows clipboard
- B. Front page of the application has incorrect spelling of the company name
- C. Application fails to display financial numbers in the correct currency format in reports
- D. Application miscalculates total monthly balance due on credit cards

Answer: A

Question No : 3 - (Topic 1)

If you are flying with an economy ticket, there is a possibility that you may get upgraded to business class, especially if you hold a gold card in the airline's frequent flier program. If you don't hold a gold card, there is a possibility that you will get 'bumped' off the flight if it is

full and you check in late. This is shown in the figure hereafter. Note that each box (i.e. statement) has been numbered.

Three tests have been run:

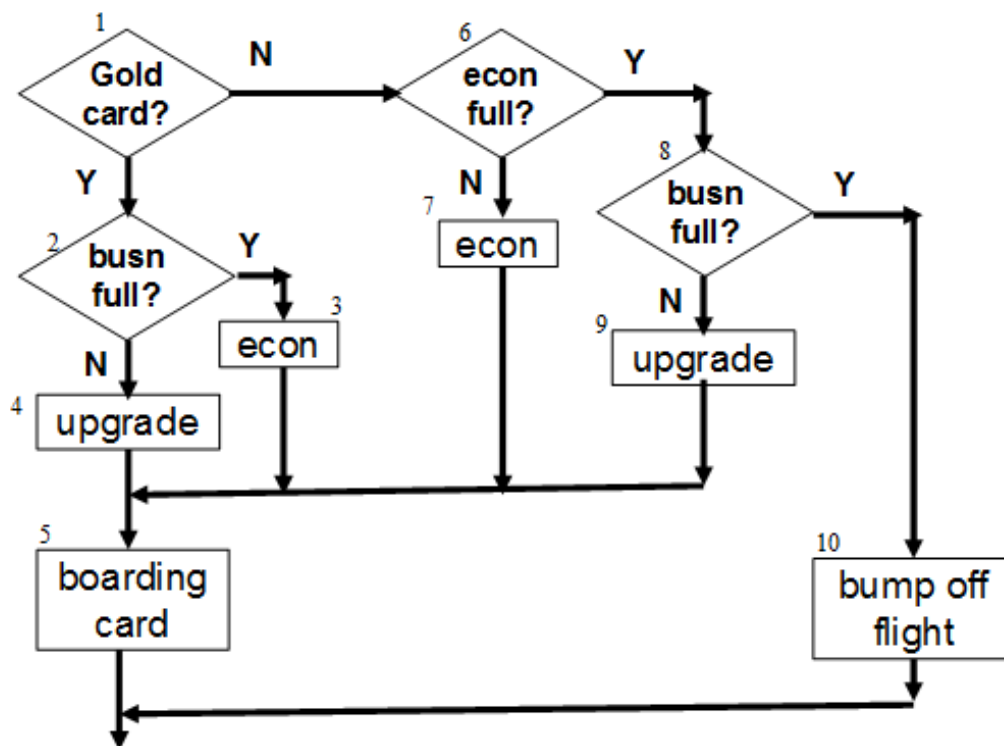
Test 1: Gold card holder who gets upgraded to business class

Test 2: Non-gold card holder who stays in economy

Test 3: A person who is bumped from the flight

What is the statement coverage of these three tests? 2 credits [K4]

Number of correct answers: 1



- A. 60%
- B. 70%
- C. 80%
- D. 90%

Answer: C

Question No : 4 - (Topic 1)

Which of the following is a dynamic analysis technique related to improving application performance? 1 credit [K2]

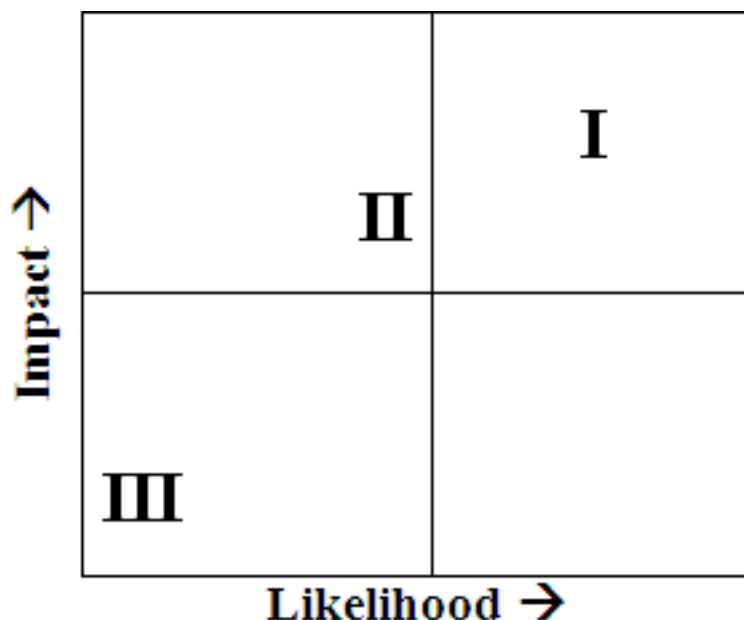
Number of correct answers: 1

- A. Code complexity analysis
- B. Profiling
- C. Networkpackage sniffing
- D. Spelling and grammar checking

Answer: B

Question No : 5 - (Topic 1)

The result of a product risk analysis performed on components I, II and III of the airplane control system shows the following risk matrix:



The project wants to mitigate the risks by defining different types of coverage depending on the risk level of the components. Which of the following would be a meaningful solution for setting the coverage targets? 2 credits [K3]

Number of correct answers: 1

- A. I: Condition determination coverage, II: Decision Coverage, III: Statement coverage
- B. I: Condition determination coverage, II: Statement coverage, III: Decision coverage
- C. I: Decision coverage, II: Condition determination coverage, III: Statement Coverage
- D. I: Multiple condition coverage, II: Decision coverage, III: Condition determination coverage

Answer: A

Question No : 6 - (Topic 1)

Definition-use pairs are identified during which of the following static analysis activities? 1 credit [K2]

Number of correct answers: 1

- A. Control flow analysis
- B. Data flow activities
- C. Coding standards analysis
- D. Cyclomatic complexity analysis

Answer: B

Question No : 7 - (Topic 1)

If we say that a set of tests has achieved 100% structural decision coverage on a particular module in a program, what does that mean?

1 credit [K2]

Number of correct answers: 1

- A. That all bugs present in that module were necessarily revealed by those tests.
- B. That every control flow branch had been executed at least once by those tests.
- C. That every dataflow in that module was exercised at least once by those tests.
- D. That every path through that module was exercised at least once by those tests.

Answer: B