

VMware

Exam VCPC550

**VMware Certified Professional – Cloud(vCloud Automation Center
5.2 and vCloud Director 5.5)**

Version: 6.0

[Total Questions: 284]

Question No : 1

Which workflow should the administrator follow to create a High Availability (HA) cluster?

- A.** Select a datacenter, create a cluster in the datacenter, add resources to the cluster, enable HA, and configure HA-specific settings
- B.** Select a resource pool, create an HA Cluster in the resource pool, add resources to the cluster, configure HA-specific settings, and enable HA
- C.** Select a datacenter, create an HA Cluster, add resources to the cluster, configure HA-specific settings, and enable HA
- D.** Select a resource pool, create a cluster in the pool, add resources to the cluster, enable HA, and configure HA-specific settings

Answer: A

Question No : 2

What should an administrator do to configure multi-pathing using software iSCSI?

- A.** Bind the VMkernel ports to the software iSCSI initiator
- B.** Configure Zoning between the hosts and SAN switches
- C.** Configure NIC teaming on the associated uplinks
- D.** Ensure jumbo frames are enabled end-to-end

Answer: A

Question No : 3

A vSphere administrator needs to upgrade a single extent VMFS3 datastore to VMFS5 and expand it to 4TB in size. The storage administrator has already expanded the underlying LUN to 4TB.

Which steps should the vSphere administrator take?

- A.** Expand the VMFS3 datastore to 4TB and then upgrade to VMFS5
- B.** Upgrade the datastore to VMFS5, manually change the partition scheme to GPT, and then expand the datastore to 4TB
- C.** Upgrade the datastore to VMFS5 and then expand it to 4TB

D. Change the block size of the VMFS3 datastore to 1MB, upgrade the datastore to VMFS5, and expand it to 4TB

Answer: C

Question No : 4

Which VLAN configuration requires the a switch port to be configured as an access port?

- A. Private VLAN
- B. External Switch Tagging
- C. Virtual Guest Tagging
- D. Virtual Switch Tagging

Answer: B

Question No : 5

During a physical network reconfiguration, an ESXi host briefly lost connection to the management network. High Availability (HA) began powering off the virtual machines residing on the affected host to be restarted on an unaffected host in the cluster.

Which setting should the administrator configure to prevent this type of HA failover during planned maintenance?

- A. Host isolation response
- B. Host monitoring
- C. VM monitoring
- D. Admission control

Answer: B

Question No : 6

What are two features provided by VMFS5? (Choose two.)

- A. Support for greater than 2TB storage devices for only VMFS and Physical RDMs

- B. Support for up to 32 extents
- C. Support for greater than 2TB storage devices for VMFS, Physical and Virtual RDMs
- D. Support for up to 64 extents

Answer: B,C

Question No : 7

During the installation of ESXi, a vmkernel interface can be configured with what capabilities?

- A. Management traffic
- B. Management traffic and vMotion
- C. Management traffic, vMotion, and Fault Tolerance logging
- D. Management traffic, vMotion, Fault Tolerance logging, and IP storage

Answer: A

Question No : 8

During an upgrade, the ESXi 5.x installer finds an existing version of ESXi and a VMFS3 volume. No virtual machines exist on the host or VMFS3 volume. The requirement is to upgrade to VMFS5.

Which option should be chosen to meet this requirement?

- A. Upgrade ESXi and preserve the VMFS datastore
- B. Install ESXi and preserve the VMFS datastore
- C. Install ESXi and overwrite the VMFS datastore
- D. Upgrade ESXi and overwrite the VMFS datastore

Answer: C

Question No : 9

An administrator attempts to install vCenter Single Sign-On Server. The installer returns an error message indicating that the installation failed. Prior to the installation, all setup prerequisites were met. The administrator has generated a vCenter Server Single Sign-On

support bundle.

Which two files should the administrator analyze to determine the cause of the failure?
(Choose two.)

- A. <SSO_Server_Directory>\utils\logs\imsTrace.log
- B. <SSO_Server_Directory>\utils\logs\install.txt
- C. %TEMP%\utils\logs\vminst.log
- D. %TEMP%\vminst.log

Answer: A,D

Question No : 10

Which two services can be enabled on VMkernel adapters for an ESXi 5.5 host through the vSphere Web Client? (Choose two.)

- A. Fault Tolerance Traffic
- B. Virtual SAN Traffic
- C. iSCSI Traffic
- D. Virtual Machine Traffic

Answer: A,B

Question No : 11

A virtual machine is receiving a large number of network packets, which is affecting the performance of other virtual machines connected to the same virtual network.

What should the vSphere administrator do to resolve the issue?

- A. Migrate the virtual machine to a standard switch that has been configured for ingress traffic shaping
- B. Configure the distributed switch to which the virtual machine is connected for ingress traffic shaping
- C. Migrate the virtual machine to a different port group on the same distributed switch
- D. Enable Network I/O Control on the standard switch to which the virtual machine is connected

Answer: B

Question No : 12

An administrator is unable to login to vCenter Server when using the vSphere Web Client. The administrator successfully accessed vCenter Server using the client earlier the same day.

What is the most appropriate first step the administrator should take to resolve this issue?

- A. Verify the web browser being used has Adobe Flash plugin version 11.5 or later
- B. Verify the vCenter Single Sign-On service is running on the vCenter Server
- C. Verify the vSphere Web Server service is running on the vCenter Server
- D. Verify the administrator has permissions configured in vCenter Server

Answer: B

Question No : 13

Which two statements are true regarding a new vSphere deployment that is using software FCoE boot from SAN? (Choose two.)

- A. Multi-pathing options must be configured by the vmkernel after boot.
- B. The adapter must support iBFT or UEFI.
- C. The adapter must support FBFT or FBPT.
- D. Multi-pathing options must be configured in the Boot ROM.

Answer: A,C

Question No : 14

A customer needs to create a virtual machine that can be migrated across multiple vSphere clusters. The virtual machine has an application that must detect the physical characteristics of the storage device.

Which type of virtual disk can be added to the virtual machine to meet these requirements?

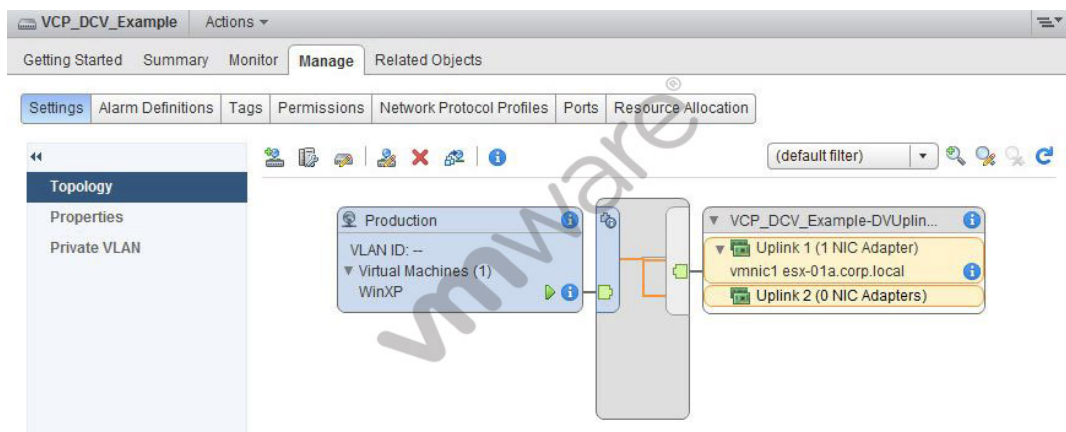
- A. A virtual disk on a VMFS datastore

- B. A raw device mapped disk in virtual compatibility mode
- C. A raw device mapped disk in physical compatibility mode
- D. A virtual disk on an NFS datastore

Answer: C

Question No : 15

-- Exhibit --



-- Exhibit --

The WinXP virtual machine user reports intermittent connectivity to the corporate network. The exhibit shows the current configuration.

The configuration is as follows:

- ✍ This virtual machine runs in a DRS/HA cluster of two hosts.
- ✍ The VCP_DCV_Example vSphere Distributed Switch was recently created.
- ✍ The WinXP virtual machine was recently migrated from another vSphere Distributed Switch.
- ✍ The WinXP virtual machine was able to connect prior to migration to this switch.
- ✍ No changes to the VCP_DCV_Example switch have been made since creation.

Which step should the administrator take to resolve the WinXP virtual machine's intermittent connectivity to the corporate network?

- A. Add the ESXi host to the switch where the virtual machine is currently running
- B. Disable Port Blocking on the VCP_DCV_Example switch
- C. Disable Port Blocking on the Production port group
- D. Enable Network I/O Control on the switch to better balance I/O

Answer: A

Question No : 16

The on-call system administrator has made a change on the ESXi host requiring a restart of the management network. The administrator forgot to restart the management network.

Lockdown mode is configured in the Recommended configuration.

Which action should the administrator take?



- A.** Use the vSphere client to enable local authentication services, then logon directly to the ESXi Shell and run `services mgmt-vmware restart`.
- B.** Use an SSH client to logon to the command line and run the `services mgmt-vmware restart` command.
- C.** Use the vSphere client to enable the DCUI and then logon to the ESXi Shell and use the menu to restart the management network.
- D.** Logon directly to the DCUI and use the menu to restart the management network.

Answer: D

Question No : 17

A vSphere administrator creates a new vSphere Distributed Switch. The administrator receives notice from the service desk that a cluster of vSphere hosts has disconnected from vCenter Server.

This disconnect occurred immediately after the new switch was created:

-  This vSphere Distributed Switch is the only distributed switch managed by vCenter Server.
-  The virtual machines are still functional and the applications are still accessible by end users.

On the ESXi hosts, which step must the vSphere administrator take to allow vCenter Server to reconnect?

- A.** Use the Direct Console User Interface to reattach the management vmnic to the appropriate switch

- B. Use the Direct Console User Interface to disable lockdown mode on each affected host
- C. Use the ESXi Shell to restart the mgmt-vmware service on each affected host
- D. Use the ESXi Shell to restart the vSphere Web Client service on each affected host

Answer: A

Question No : 18

An administrator needs to export system logs for an ESXi 5.5 host to determine the root cause for a host performance issue. This host supports manifest-driven exports of system logs.

Which manifest is selected by default during the export system log wizard?

- A. Userworld
- B. Hostworld
- C. PerformanceSnapshot
- D. HungVM

Answer: A

Question No : 19

Which two precautions should a vSphere administrator take before increasing the size of a VMFS datastore? (Choose two.)

- A. Unmount the datastore
- B. Perform a rescan to ensure that all hosts see the most current storage
- C. Quiesce I/O on all disks involved
- D. Shut down all virtual machines stored in the datastore

Answer: B,C

Question No : 20

A vSphere administrator configures a preferred heartbeat datastore in an HA/DRS cluster configuration. The vCenter Server identifies an alternative preferred datastore.

Why would vCenter Server identify an alternative preferred datastore over the administrator's preference?

- A. The selected datastore contains powered-on virtual machines.
- B. The selected datastore is formatted with a 1 MB block size.
- C. The selected datastore is an NFS datastore.
- D. The selected datastore is not accessible to all of the hosts.

Answer: D

Question No : 21

An administrator determines that when a host residing in a High Availability (HA) cluster fails, the virtual machines fail to restart on a remaining host, or will only restart after a long delay.

Which two conditions would account for this behavior? (Choose two.)

- A. The virtual machines were not protected by vSphere HA at the time the failure occurred.
- B. Distributed Resource Scheduler was not enabled at the time the failure occurred.
- C. There is insufficient spare capacity on hosts with which the virtual machines are compatible.
- D. The virtual machines contain physical Raw Device Mappings.

Answer: A,C

Question No : 22

An administrator of a secure environment needs to add an iSCSI target to a new ESXi host using the vSphere client. The administrator has configured discovery and performed a rescan operation, but the iSCSI target does NOT appear.

Which action should the administrator take for the target to appear in the vSphere client?

- A. Configure appropriate CHAP authentication settings
- B. Bind a VMkernel port to the iSCSI initiator
- C. Configure Jumbo Frames prior to adding iSCSI targets
- D. Enable iSCSI in a vSphere Distributed Switch configuration