

VMware

Exam VCPD510

VMware Certified Professional - Desktop

Version: 7.0

[Total Questions: 439]

Topic 1, Volume A**Question No : 1 - (Topic 1)**

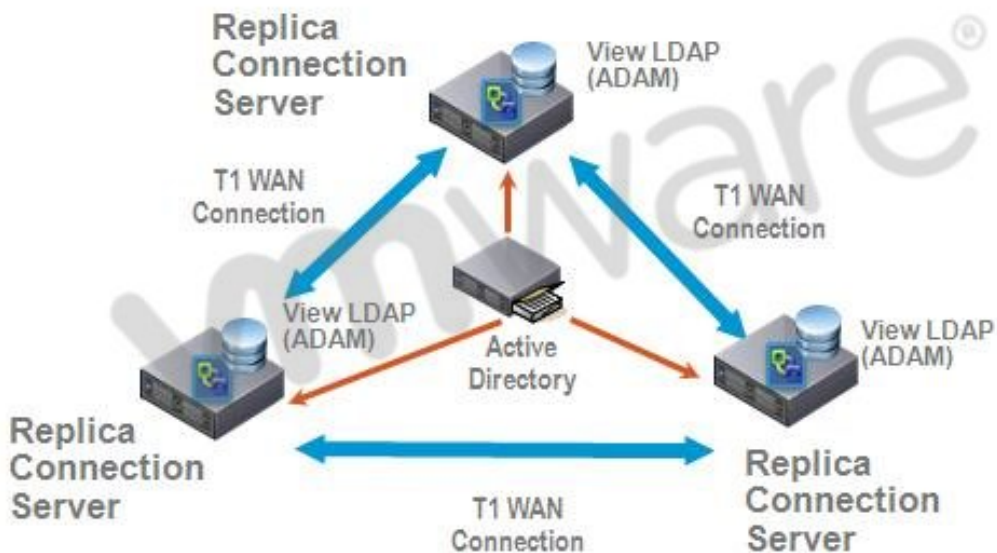
What is the proper syntax to use when adding a domain user to the View Composer configuration?

- A. DOMAIN\USER
- B. DOMAIN.COM\USER
- C. OU=DOMAIN, CN=USER
- D. USER@DOMAIN.COM

Answer: B

Question No : 2 - (Topic 1)

-- Exhibit --



-- Exhibit --

Click the Exhibit button.

A proposed configuration of three replica servers is shown.

What can result from this configuration?

- A. Multiple ADAM instances can cause a performance problem.
- B. Three replica servers can result in client connection problems.
- C. Multiple connections to Active Directory can cause a performance problem.
- D. Replication over WAN connections can cause inconsistencies in the LDAP database.

Answer: D

Question No : 3 - (Topic 1)

An Administrator is upgrading to View Connection Server 5.x from a previous release.

Which component is omitted from installation automatically during an upgrade?

- A. VMware Message Bus Component
- B. VMware Script Host
- C. VMware PCoIP Secure Gateway
- D. VMware VDMDS

Answer: D

Question No : 4 - (Topic 1)

What is the minimum required level of privileges required to install the View Connection Server?

- A. Domain User
- B. Domain Administrator
- C. Local Power User
- D. Local Administrator

Answer: D

Question No : 5 - (Topic 1)

An administrator is adding a replicated instance of View Connection Server to the environment silently.

Which MSI property would be used to identify the instance being replicated?

- A. ADAM_PRIMARY_INSTANCE
- B. ADAM_PRIMARY_NAME
- C. VDM_INSTANCE_NAME
- D. VDM_SERVER_INSTANCE

Answer: B

Question No : 6 - (Topic 1)

How many disks can a View Transfer Server concurrently transfer?

- A. 15
- B. 60
- C. 4
- D. 30

Answer: B

Question No : 7 - (Topic 1)

Which TCP port must be open on the firewall of the View Transfer Server?

- A. 443
- B. 21
- C. 389
- D. 4172

Answer: A

Question No : 8 - (Topic 1)

An administrator is creating a new virtual machine for use as a View Transfer Server.

Which SCSI controller should be selected?

- A. Buslogic Parallel
- B. LSI Logic Parallel
- C. LSI Logic SAS
- D. VMware Paravirtual

Answer: C

Question No : 9 - (Topic 1)

An administrator would like to add a View Security Server to add external access to the environment.

Which View component must be installed and configured prior to installation of the View Security Server?

- A. View Agent Server
- B. View Connection Server
- C. View Replica Server
- D. View Transfer Server

Answer: B

Question No : 10 - (Topic 1)

An administrator is installing a View Security Server and is required to specify a PCoIP external URL.

Which is a valid example of a PCoIP external URL?

- A. https://10.10.10.100:443
- B. https://10.10.10.100:4172
- C. https://view.domain.com:443
- D. https://view.domain.com:4172

Answer: B

Question No : 11 - (Topic 1)

Which attribute is required when configuring a View Security Server Pairing Password?

- A. Password complexity value
- B. Password expiration value
- C. Password length value
- D. Password timeout value

Answer: D

Question No : 12 - (Topic 1)

During an installation of Security Server, a message displays that the pairing password has expired.

Where must a new password be configured?

- A. View Connection Server
- B. Active Directory
- C. View Administrator
- D. View Security Server

Answer: C

Question No : 13 - (Topic 1)

What is the minimum amount of memory required in order to install View Security Server on Windows Server 2003?

- A. 1GB
- B. 4GB
- C. 2GB
- D. 8GB

Answer: C

Question No : 14 - (Topic 1)

An organization has a View Connection Server in DomainA. Users in DomainB need to access desktops on the existing connection server in DomainA.

What must the system administrator do in Active Directory to enable users from DomainB to access desktops in DomainA?

- A. set up a Security Server to proxy the connection to DomainB
- B. check the multidomain authentication box in the View Manager Server Settings
- C. set up a one-way trust relationship from DomainB to DomainA
- D. set up a two-way trust relationship between DomainA and DomainB

Answer: D

Question No : 15 - (Topic 1)

An administrator creates a View Composer linked clone pool of Windows XP Desktops, and the operation fails to finish customizing the desktops. The error log below provides more detail.

```
2010-09-21 12:46:04,281 [836] INFO Guest - [Guest.cpp, 248] Attempting to join Test1 to the domain vmw-dc.local f3 2010-09-21 12:46:04,562 [836] FATAL Guest - [Guest.cpp, 261] Domain join failedD. 1265 f3 2010-09-21 12:46:04,718 [836] FATAL CSvmGaService - [svmGaService.cpp, 116] Domain join failedError 1265 (0x4f1): The system detected a possible attempt to compromise security. Please ensure that you can contact the server that authenticated you.
```

What is the cause of the error?

- A. Active Directory encryption levels
- B. Active Directory group policy
- C. Active Directory permissions
- D. Active Directory root certificate

Answer: A

Question No : 16 - (Topic 1)

The security team has determined that the default setting for the connection ticket is too long and wants to shorten the period that the ticket is valid for authentication.

Which GPO needs to be configured and applied to the View environment?

- A. vdm_common.adm
- B. vdm_client.adm
- C. vdm_server.adm
- D. vdm_agent.adm

Answer: D

Question No : 17 - (Topic 1)

What is the default port number that View Composer uses to communicate with other View components?

- A. 4001
- B. 4100
- C. 443
- D. 18443

Answer: D

Question No : 18 - (Topic 1)

What is the maximum supported number of linked clone virtual machines View Composer can provision per pool?

- A. 512
- B. 1024
- C. 128
- D. 256

Answer: A

Question No : 19 - (Topic 1)

What is the default number of linked clone virtual machines that View Composer will recompose at one time?

- A. 2
- B. 8
- C. 64
- D. 128

Answer: A

Question No : 20 - (Topic 1)

What is the maximum number of ESXi hosts in a vSphere cluster used by View Composer if using VMFS datastores?

- A. 4
- B. 8
- C. 32
- D. 16

Answer: B

Question No : 21 - (Topic 1)

Which setting in View Composer can be used to reduce the storage footprint of a pool of virtual desktops?

- A. redirect disposable files to a non-persistent disk
- B. redirect temporary files to a non-persistent disk
- C. redirect user profile data to a non-persistent disk
- D. store Windows profile on a disposable disk

Answer: A

Question No : 22 - (Topic 1)

An administrator is creating a new account for use with View Composer.

What is the minimum security group to which the account must belong?

- A. Domain Administrators
- B. Domain Computers
- C. Domain Users
- D. Forest Administrators

Answer: C

Question No : 23 - (Topic 1)

An administrator is receiving an error when trying to connect to View Composer from the View Administrator. The environment has been upgraded from 4.0.x.

Why can the connection not be made?

- A. The network port is no longer valid.
- B. The View Composer service must be restarted.
- C. An incorrect certificate was chosen during installation.
- D. Security certificates cannot be migrated between versions.

Answer: A

Question No : 24 - (Topic 1)

What is a prerequisite for configuring an events database?

- A. The events database certificate must be created
- B. An ODBC data source for the events database must exist
- C. A prefix for the tables in the events database has been defined
- D. The username and password of an administrator on View Administrator

Answer: C

Question No : 25 - (Topic 1)

What is the default port number used by the View Composer when setting up the vCenter