

**VMware VCPVCD510**

**VMware Certified Professional 5 - IaaS Exam**

**Version: 4.0**

**QUESTION NO: 1**

An administrator is auditing IP address use in a specific Organizational Network.

Where will the administrator find this information?

- A. The administrator can run a Global IP Allocation report
- B. The information can be located in the IP Allocation properties for the specific Organizational Network
- C. The information can be located in the System Properties of the Organizational Network
- D. The administrator can run an IP Allocation report for the specific Organizational Network

**Answer: B**

**Explanation:**

**QUESTION NO: 2**

An administrator needs a list of all hosts and statuses across all Provider vDCs in a vCloud Director environment. Where will the administrator find this information?

- A. In the Hosts section of the vSphere Resources pane of the System tab
- B. In the Host Status report of vCenter Chargeback
- C. In the Hosts section of the vSphere Resources pane of the Administration tab
- D. In the Host settings section of each organization

**Answer: A**

**Explanation:**

**QUESTION NO: 3**

An administrator is updating the system SMTP server settings.

Where will the administrator change this setting?

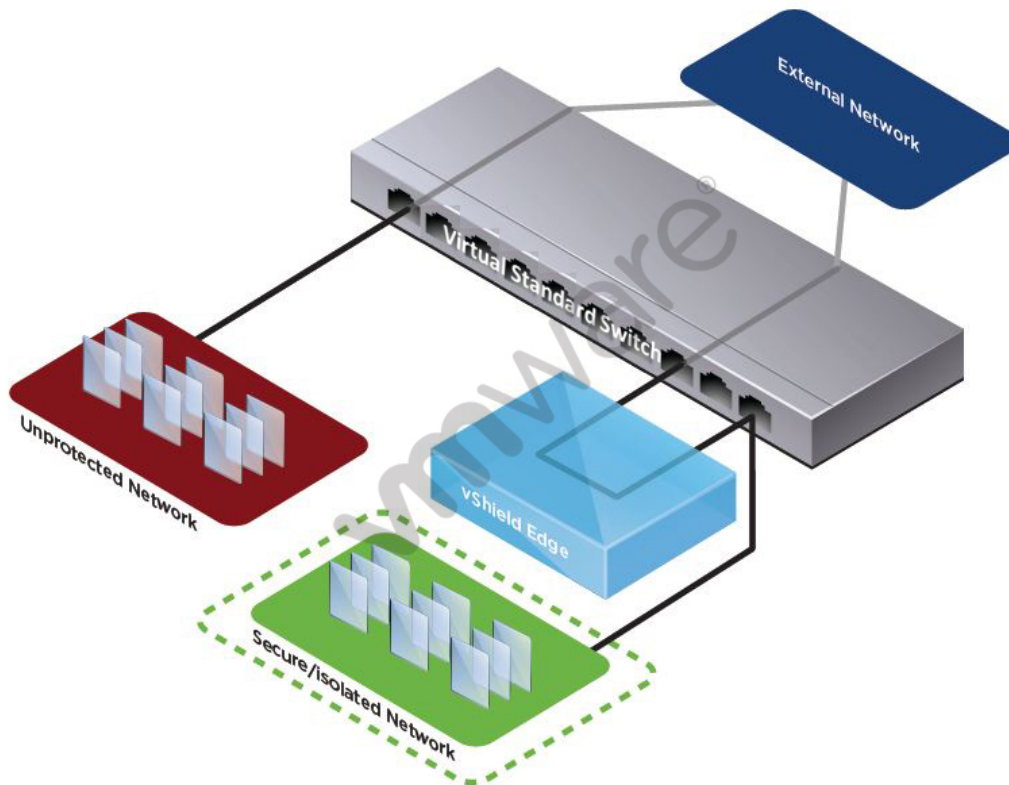
- A. The Email Server settings in the Alerts section of the Administration page.
- B. The Email section in the System settings section of the Administration page.
- C. The Email Server settings in the Servers section of the Administration page.
- D. The Email Services configuration file on each vCD Cell.

**Answer: B**

**Explanation:**

**QUESTION NO: 4**

Click the Exhibit button.



An administrator needs to configure a vSphere environment to support a vCloud network architecture providing for automatic provisioning of network pools.

Which step must be taken in order to successfully configure Port Group Isolation?

- A. vShield Edge component must be added between the External Network and the virtual switch.
- B. VLAN/PVLAN configuration information must be added to the configuration.
- C. A vShield Edge component must be added between the Unprotected Network and the virtual switch.
- D. The Virtual Standard Switch must be replaced with a vSphere Distributed Switch.

**Answer: D**

**Explanation:**

**QUESTION NO: 5**

Where must an administrator place sysprep files in order for Guest OS Customizations to work on all supported versions of Windows?

- A. On the VM during vApp creation.
- B. On the vCD management cluster.
- C. In a specific location on all vCD Cells.
- D. In a specific location on the vCenter Servers.

**Answer: C**

**Explanation:**

**QUESTION NO: 6**

An administrator attempts to delete the network named Internet but receives an error.

What is a possible reason for the error?

- A. The network named Internet is backed by a port group on a vSphere Standard Switch.
- B. The vShield Edge appliance on the external network is powered off.
- C. The administrator needs to be an Organization Administrator.
- D. The network is still in use by an Organization.

**Answer: D**

**Explanation:**

**QUESTION NO: 7**

A vCloud Service Provider is attempting to monitor a vCloud implementation. The service is unavailable from the Organization network. Firewall rules on the vShield Edge device are set correctly. Why would the service be unavailable?

- A. IP Masquerading rules are not set.
- B. NAT is not automatically assigned.
- C. Static routing is not enabled.
- D. DHCP is not scoped properly.

**Answer: A**

**Explanation:**

**QUESTION NO: 8**

Which core vSphere feature can be used to improve the availability of vShield components?

- A. VM Monitoring
- B. vCenter Server Heartbeat
- C. Fault Tolerance
- D. HA Monitoring

**Answer: A**

**Explanation:**

**QUESTION NO: 9**

Due to diminishing capacity, an ESXi host is added to a cluster that supports a cloud environment. A vCloud Administrator notices that newly created VMs created through vCD are not utilizing the host resource. What is the reason for this?

- A. An inventory synchronization was not performed after the new host was added to the cluster.
- B. The host was not manually added to an organizational vDC before it was utilized.
- C. The host was not prepared to be part of the vCD environment.
- D. DRS was not enabled on the cluster providing resources to the vCD environment.

**Answer: C**

**Explanation:**

**QUESTION NO: 10**

A virtual machine in the Finance Organization must communicate with a virtual machine in the Sales Organization. The virtual machine in the Finance Organization has been defined with an external IP address. A static route has been created on the Finance Organization Network.

For communication to successfully occur between these two virtual machines, how many vShield Edge devices and how many firewall rules would need to be deployed (Choose Two)?

- A. 3 vShield Edge devices
- B. 2 vShield Edge devices
- C. 3 Firewall rules

**D. 2 Firewall rules****Answer: A,B****Explanation:****QUESTION NO: 11**

An administrator needs to store a multi-VM vApp in a vCloud so that others can easily deploy.

Where should the administrator store this item?

- A. In the Content Management System.
- B. In an organization catalog.
- C. On the vCD cell's local storage.
- D. On the primary data store.

**Answer: B****Explanation:****QUESTION NO: 12**

An administrator needs to configure a vShield Edge device that allows for incoming pings.

Which two steps would allow incoming pings? (Choose two.)

- A. The rule must have the Log network traffic for firewall rule setting checked.
- B. A rule must be created that allows for outgoing traffic and the UDP protocol.
- C. The default rule must be set to Disable.
- D. A rule must be created that allows for incoming traffic and the ICMP protocol.

**Answer: C,D****Explanation:****QUESTION NO: 13**

A virtual machine in the QA Organization must communicate with a virtual machine in the Research Organization. When creating a Static Route, which two pieces of information are required (Choose Two)?

- A. The Classless Interdomain Routing (CIDR) address
- B. The address of the next hop
- C. The subnet address of the target network
- D. The address of the target vShield device

**Answer: A,B**

**Explanation:**

#### QUESTION NO: 14

A vApp is deployed within an internal vApp Network. One VM in the vApp is configured to use NAT. The vApp is converted to a vApp template and deployed to the Organization. After deploying the vApp, network connectivity does not function as expected.

What explains this behavior?

- A. vApps using NAT require the use of Network Pools.
- B. The vApp should be connected to an External Direct network.
- C. All virtual machines in a vApp must use the same NAT settings.
- D. The vApp NAT configuration settings are lost when a vApp is deployed.

**Answer: D**

**Explanation:**

#### QUESTION NO: 15

A user has been assigned a single external IP address that connects to the Internet. The user has a vApp containing 4 VMs deployed in the Organization VDC. Which technology will allow a user's VMs to accept incoming traffic the Internet?

- A. Firewall Rules
- B. Port Forwarding
- C. IP Translation
- D. 1:1 NAT

**Answer: B**

**Explanation:**

**QUESTION NO: 16**

An administrator receives the error:

Unable to create vShield Edge VM

while using the Reset Network function on vApp or Organizational Networks. What is the cause of this error?

- A. The vApp or Organizational Network name is too long.
- B. The vShield Edge VM resource pool is out of resources.
- C. The vShield Manager appliance is not registered to vCD.
- D. The vShield Manager appliance is not registered to vCenter.

**Answer: A**

**Explanation:**

**QUESTION NO: 17**

An administrator needs to allow traffic between two different networks within the same Organization. Traffic on the internal network cannot be compromised.

Where must static routes be configured to enable this functionality?

- A. On the source Internal network to the target External Routed network
- B. On the source External Direct network to the target network
- C. On the source Internal network to the target External Direct network
- D. On the source External Routed network to the target network

**Answer: D**

**Explanation:**

**QUESTION NO: 18**

An administrator is unable to connect to the Internet from within the cloud. The administrator suspects the firewall setting is causing the issue.

Which troubleshooting step should the user take first?

- A. Open Configure Services for the External Network
- B. Open Configure Services for the External Routed Organizational network



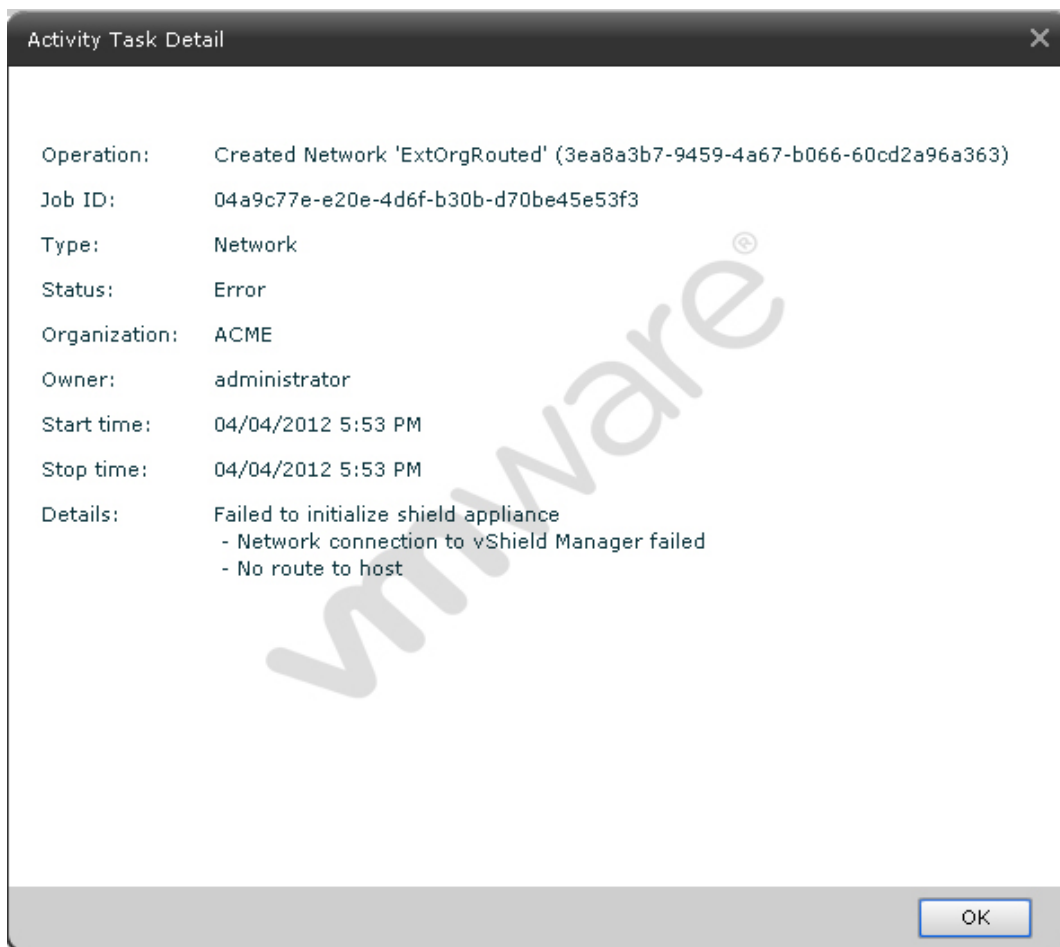
- C. Open Configure Services for the vShield Edge device
- D. Open Configure Services for the External Direct Organizational network

**Answer: B**

**Explanation:**

### QUESTION NO: 19

Click the Exhibit button.



ACME has a Web Server virtual machine with an IP Address of 192.168.0.27. It is not responding to incoming customer requests on either internal or external networks. The network is an External Routed network with the firewall rules displayed in the exhibit.

Which configuration change would correct this behavior?

- A. Enable the Outgoing Web Services rule.
- B. Enable the ACME External Internet rule
- C. Change the IP Address of the Outgoing Web Services rule to 192.168.0.17

D. Delete the Outgoing Web Services rule

**Answer: A**

**Explanation:**

#### QUESTION NO: 20

An administrator has scheduled a report to run at 8 PM nightly and has configured a number of recipients to receive the report. After the report runs, the administrator discovers that a link to the report was sent to the recipients, not the report itself. Why did this occur?

- A. vCenter Chargeback cannot support attachments via email.
- B. The report size was larger than the size limit configured for the SMTP server.
- C. vCenter Chargeback was configured to send links instead of attachments.
- D. The SMTP server was configured not to accept attachments.

**Answer: B**

**Explanation:**

#### QUESTION NO: 21

The VM Instance feature in vCenter Chargeback allows the hard bundling of which two resource types? (Choose two.)

- A. CPU
- B. Memory
- C. Storage
- D. vCPU

**Answer: B,D**

**Explanation:**

#### QUESTION NO: 22

Which two actions should an Organization Administrator take to deploy three vApps that communicate with each other? (Choose two.)

- A. Connect all vApps to an existing Organization network.