

Veritas

Exam VCS-352

Administration of Storage Foundation and HA 6.0 for Windows

Version: 7.0

[Total Questions: 286]

Question No : 1

Which three are minimum hardware requirements for installing and using Symantec Backup Exec System Recovery Manager 8.5 Server? (Select three.)

- A. Pentium 3 Processor 1 GHz or higher
- B. 512 MB of system memory (RAM)
- C. 750 MB of disk space
- D. SVGA video card
- E. 1 GB of system memory (RAM)

Answer: A,C,E

Question No : 2

An administrator changes the default value for Process agent attributes RestartLimit to 2 and ConflInterval to 180. The Process resource faulted and Veritas Cluster Server (VCS) restarted the resource. The Process resource faults again after surviving a stable online period of 4 minutes. VCS restarts the resource.

How will VCS behave if the Process resource fails again after surviving a stable online period of 2 minutes?


- A. VCS restarts the resource.
- B. VCS faults the resource.
- C. VCS waits for user intervention.
- D. VCS offlines the resource.

Answer: A

Question No : 3

Refer to the exhibit.

Volumes

| Name | Group name | Status | Size | Free Space |
|-----------------------------------------------------------------------------------------------|------------|---------|-----------|------------|
|  Vol1 (V:) | test1 | Stopped | 50.000 MB | 47.600 MB |

Which action needs to be taken to return the volume to a Healthy status?

- A. import the disk group
- B. merge the foreign disk group
- C. perform a refresh operation
- D. reactivate and perform a rescan

Answer: A

Question No : 4

Which two options are correct for expanding a 1GB striped volume with two columns to a 2GB volume? (Select two.)

- A. Add 4 256MB disks to the disk group and expand the volume using the max-size option
- B. Add 4 512MB disks to the disk group and expand the volume using the max-size option
- C. Add 2 512MB disks to the disk group and expand the volume using the max-size option
- D. Add 2 1GB disks to the disk group and expand the volume using the max-size option
- E. Add 1 1GB disk to the disk group and expand the volume using the max-size option

Answer: A,C

Question No : 5

Which feature allows for the downloading of software updates that are associated with a user's version of the product over the Internet?

- A. Symantec ThreatCon
- B. Backup Exec Retrieve
- C. LiveUpdate
- D. Symantec Backup Exec System Recovery Manager 8.5

Answer: C

Question No : 6

Symantec Backup Exec System Recovery 8.5 (BESR 8.5) provides the ability to recover a

system to hardware that is dissimilar from the original hardware on which the backup image was initially created.

Which BESR 8.5 feature is used when recovering a system backup to dissimilar hardware?

- A. Offsite Copy
- B. Granular Restore Option (GRO)
- C. Restore Anyware
- D. LightsOut Restore

Answer: C

Question No : 7

Which utility is used to run risk analysis?

- A. Configuration Checker
- B. VxExplorer
- C. hagetcf
- D. Windows Data Collector

Answer: D

Question No : 8

An administrator needs to configure a database server in cluster. It may take multiple monitor intervals before the database server is reported ONLINE.

Which two attributes need to be considered for the database server resource type? (Select two.)

- A. OnlineRestartLimit
- B. ToleranceLimit
- C. OnlineWaitLimit
- D. OnlinePriority
- E. OnlineRetryLimit

Answer: C,E

Question No : 9

Which statement describes a valid notifier configuration?

- A. SMTP or SNMP can be configured for each event type, regardless of the severity.
- B. Events can trigger either SNMP or SMTP notices, but NOT both.
- C. SNMP notices can be configured only for events of type Error and SevereError.
- D. SMTP can only be used for Information and Warning events.

Answer: A

Question No : 10

What is the valid cluster ID range?

- A. 0 to 255
- B. 0 to 16535
- C. 0 to 32535
- D. 0 to 65535

Answer: D

Question No : 11

Which two are valid options for mirroring a 500GB striped volume created with two 500GB disks? (Select two.)

- A. add 2 200GB disks to the disk group where the volume resides, select mirror, then select auto select disks
- B. add 1 500GB disk to the disk group where the volume resides, select mirror, then select auto select disks
- C. add 3 150GB disks to the disk group where the volume resides, select mirror, then select auto select disks
- D. add 2 250GB disks to the disk group where the volume resides, select mirror, then select auto select disks
- E. add the unallocated space left from each disk in the disk group where the volume

resides and mirror the volume

Answer: B,D

Question No : 12

An administrator wants to set the fault behavior of a cluster to allow a faulting application three tries to online the faulted resource on the same node.

Which attribute is used to set the controlling fault behavior?

- A. MonitorInterval
- B. ToleranceLimit
- C. ConfInterval
- D. RestartLimit

Answer: D

Question No : 13

Which type of service group is appropriate for applications that manage multiple application instances that run simultaneously without data corruption?

- A. application
- B. hybrid
- C. failover
- D. parallel

Answer: D

Question No : 14

A system administrator needs to restore an incremental backup. However, one of the incrementals is missing.

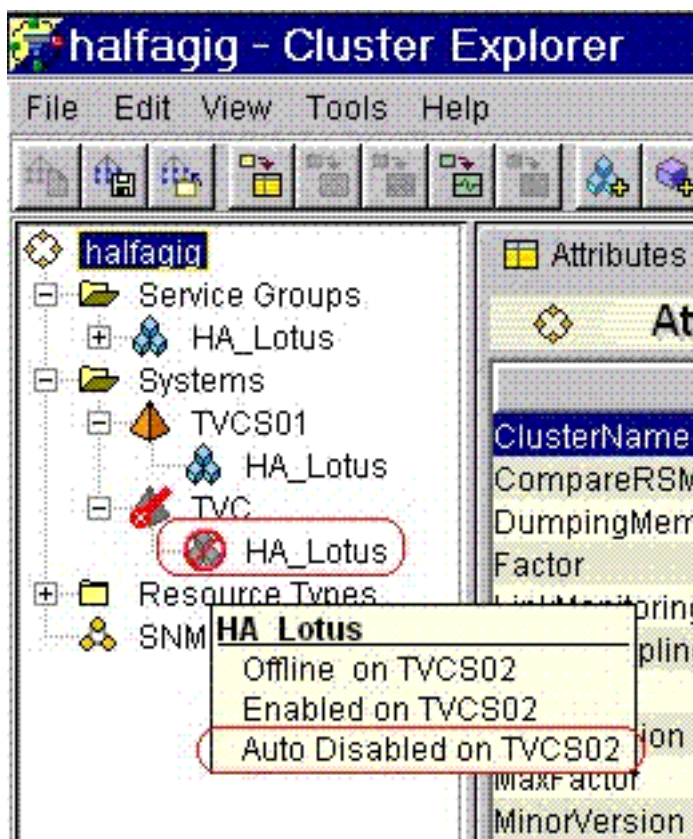
What can the system administrator do to restore the most current stable system possible?

- A. restore from the incremental prior to the missing one
- B. restore from a different backup set
- C. restore from the base recovery point
- D. restore using Recovery Point Browser from the last incremental in the set

Answer: A

Question No : 15

Refer to the exhibit.



Which two states does this indicate to an administrator? (Select two.)

- A. System TVCS02 exited the cluster.
- B. The cluster is unable to determine the status of service group HA_Lotus.
- C. Service group HA_Lotus is partially active in system TVCS02.
- D. Group HA_Lotus contains disabled resources.
- E. System TVCS02 is powered off.

Answer: A,B

Question No : 16

An administrator notices that the Veritas Cluster Server (VCS) sends SNMP notification about monitor timeouts only for the first monitor timeout. To tune SNMP notification, the administrator changes the AlertOnMonitorTimeout from its default value of 0 to 5.

What will be the effect of this change?

- A. VCS sends SNMP notification at fifth monitor timeout.
- B. VCS sends SNMP notification at each fifth consecutive monitor timeouts.
- C. VCS sends SNMP notification at the first five consecutive monitor timeouts.
- D. VCS sends SNMP notification at the first and each fifth consecutive monitor timeouts.

Answer: D

Question No : 17

How much RAM does the multilingual Symantec Recovery Disk require?

- A. 256 MB
- B. 512 MB
- C. 768 MB
- D. 1 GB

Answer: C

Question No : 18

An administrator wants Veritas Cluster Server (VCS) to send a notification when an event occurs related to the agent's resource type.

Which attribute does the recipient need to add?

- A. AgentOwner
- B. TypeOwner

- C. ResourceOwner
- D. ClusterOwner

Answer: B

Question No : 19

An administrator noticed a FAULTED state on a critical resource.

Which step must the administrator take before clearing the FAULTED state?

- A. manually probe the resource
- B. ensure the resource is offline
- C. wait for the OfflineMonitorInterval
- D. ensure the resource is online

Answer: B

Question No : 20

To perform a rolling upgrade, Veritas Cluster Server (VCS) must be configured to use which type of authentication?

- A. single sign-on authentication
- B. VCS authentication
- C. Windows authentication
- D. LDAP authentication

Answer: B

Question No : 21

Which file extension is used for file and folder backup files?

- A. .FFB
- B. .FBF
- C. .V2i

D. .iV2i

Answer: B

Question No : 22

Where should Symantec Backup Exec System Recovery 8.5 recovery point destination threshold be configured to generate a warning when the specified capacity has been exceeded?

- A. Advanced -> Manage Backup Destination -> Options
- B. Tools -> Manage Backup Destination -> Clean Up
- C. Advanced -> Manage Backup Destination -> Move
- D. Tools -> Manage Backup Destination -> Settings

Answer: D

Question No : 23

Which three license editions are available for Symantec Backup Exec System Recovery 8.5? (Select three.)

- A. Desktop Edition
- B. Essential Business Server Edition
- C. Small Business Server Edition
- D. Server Edition
- E. Advanced Server Edition

Answer: A,C,D

Question No : 24

A logged-in user with insufficient rights for using Symantec Backup Exec System Recovery 8.5 (BESR 8.5) needs to back up the computer.

How can the user access BESR 8.5 and create a backup while logged in with insufficient rights?